

# THE HORSEBRIDGE ARTS CENTRE

WHAT'S ON  
OCTOBER **DECEMBER** 2019





*Copperfields*  
OF WHITSTABLE

Cookshop & Gifts Since 1956

*Inspiration for your kitchen and home*



Cookware • Homeware • Gifts • Bakeware • Furniture • Electrical • Cards

shop@copperfieldsofwhitstable.co.uk • www.copperfieldsofwhitstable.co.uk

Open 7 days a week • 93-95 High St • Whitstable • Kent • CT5 1AY • Tel: 01227 273519



**FLOW & CO**

BEAUTIFUL HAIR.  
NATURALLY.

Present this advertisement & receive  
a 10% discount on your first service

01227 271 225

3 Horsebridge Road, Whitstable, CT5 1AF  
www.flowandco.co.uk    flowandcohair

Gracias by @diana\_somerville\_for\_dorcas

**betty loves bryan**

Contemporary art, homeware and clothes

And THE place to buy Breton stripes!

108 High Street, Whitstable, Kent CT5 1AZ

01227 271001 / 07788 910115

bettylovesbryan@btconnect.com • www.bettylovesbryan.com



Follow us on Twitter  
@lizziedesign



Like us on  
Facebook



Follow us on Instagram  
@betty\_loves\_bryan

## OPENING HOURS

Mondays to Saturdays 9am - 5pm  
*open later for booked classes and events*

Sundays 10am - 4pm

The Cafe closes 30 minutes before  
the centre.

## BOOK TICKETS

book online at  
[thehorsebridge.org.uk/tickets](http://thehorsebridge.org.uk/tickets)

or by phone on  
**01227 281174**

11 Horsebridge Road,  
Whitstable, Kent. CT5 1AF  
[info@thehorsebridge.org.uk](mailto:info@thehorsebridge.org.uk)



@thehorsebridge



@horsebridge

front cover still image from  
**'Five Seasons - The Gardens of Piet  
Oudolf' (2017)** directed by Thomas Piper  
Showing at the Horsebridge on Sunday 3  
November, see page 9 for details

Charity number : 1099570

# 25

support our fundraiser



# 35

final exhibition



# 25

festive celebrations



# 48

food & drink at  
Cafe Revival



## WELCOME AUTUMN

We're catching our breath from a fantastically busy summer filled with exhibitions, workshops and events that **thousands** of people, young and old, have **experienced**. And our autumn programme is no quieter with something for all.

The final exhibition from the **incredible teenagers** behind our Young Digital Makers project is an October must-see. The **multimedia exhibition** is the culmination of their diverse work since January 2018 and celebrates their **new skills**. If funding can be secured we look forward to providing these opportunities to local, young people. *Details on page 19.*

Due to securing **funding** to support our regular matinee film screenings we are thrilled to be **improving** the viewing **experience** of our audiences with new equipment. Take a look at the packed season of matinees and more *on page 7.*

And finally ... don't miss the chance to purchase something unique at our **vital fundraising** events and help us to carry on our work in Whitstable. Our Art Auction **bidding exhibition** this October, features work donated by our generous artistic community, giving you the chance to bid throughout the short exhibition and grab an art bargain. November brings our first Horsebridge **Handmade Christmas**, where you can browse a range of handmade festive goodies. A lovely opportunity to pick up Christmas cards, decorations, presents and perhaps even a little something for yourself. *More on page 25.*

As always, we are incredibly thankful for all your support.

Liz Daone, Centre Director

SUPPORTED BY



## CONTENTS

- 07 **Films**
- 08 **Into Film Festival**
- 11 **Talks**
- 15 **Clubs and Groups**
- 17 **Gallery Exhibitions**
- 18 **Element Kent**
- 24 **Summer Celebration**
- 25 **Art Auction  
Handmade Christmas**
- 26 **Adult Classes**
- 35 **Young Digital Makers**
- 36 **Child & Family Activities**
- 43 **Young History Makers**
- 44 **Repair Cafe**
- 47 **Become a Friend**
- 48 **Cafe**





# Birdies

Restaurant

Local fish from  
**Whitstable Harbour**

Classic **French** Cuisine

Opening Times:

## Lunch

Tues - Sun 12.00/2.30

## Evenings

Tues - Mon 6.00/9.30

41 Harbour Street  
Whitstable, Kent CT5 1AH  
For reservations telephone:  
01227 265337



# HQ

HeadQuarters

Men  
Women &  
Children

the salon also  
provides a  
massage  
therapy room  
and coffee  
corner



133 Tankerton Road, Tankerton, CT5 2AW

**01227 637678**

[www.hqtankerton.com](http://www.hqtankerton.com)

## HORSEBRIDGE FILM

**M** Thursday matinees: £4 Earlybird £3  
Sundays and Fridays: £5 Earlybird £4

We have recently been awarded funding from **National Lottery Awards for All** to support our regular matinee film screenings. This means that we will be replacing our fifteen-year-old projector and purchasing a new screen for our film events – we are really looking forward to being able to improve the viewing experience of our audiences. To celebrate our grant funding we will be lowering the price of our Thursday matinee film tickets to £4 (£3 earlybird) until 2020.

Our autumn season of films include a Sunday morning screening of family film *Never Ending Story* followed by a matinee of *Five Seasons: The Gardens of Piet Oudolf*, a fascinating documentary journeying through all four seasons in stunning gardens and locations around the world. Our Friday film this season is *Rocket Man*.

Our Thursday **M** Matinee film screenings are as much a social occasion for many as they are a chance to watch the film. Every matinee screening includes **free tea or coffee and biscuits**.

We are excited to support the Into Film Festival again this season, with two screenings in November.

tickets: [thehorsebridge.org.uk/tickets](http://thehorsebridge.org.uk/tickets) or 01227 281174

## OCTOBER

**M** **Red Joan (2018)**  
Thursday 17 October 2pm

The story of Joan Stanley, an elderly lady enjoying a quiet retirement in suburban England prior to being exposed as the KGB's longest-serving British spy.

1hr 40mins

Cert 12A

Tickets £4, for earlybird £3 price: book by 3 October.



## NOVEMBER

**The Neverending Story (1984)**  
Sunday 3 November 10.45am

The classic Wolfgang Peterson film about a troubled young boy who opens the pages of a mysterious book and finds himself in a far-away land, filled with fantastical creatures and adventures.

1hr 40mins

Cert U

Tickets £5, for earlybird £4 price: book by 20 October.

OCTOBER DECEMBER 2019



## Fishslab Gallery

11 Oxford Street  
Whitstable  
CT5 1DB

[www.fishslabgallery.co.uk](http://www.fishslabgallery.co.uk)



fishslab art gallery



@fishslab1

## HORSEBRIDGE FILM

# INTO FILM FESTIVAL 6-22 NOV 2019

The Into Film Festival is the world's largest free film festival – a celebration of film & education for 5-19 year olds and their teachers. It aims to put film at the heart of children and young people's learning, contributing to their cultural, creative and personal development.

The Festival provides thousands of free film screenings, activities, workshops and cinema experiences designed to complement the curriculum and provide valuable educational opportunities.

This year's Festival will take place from 6-22 November across the UK.

For more information please visit [intofilm.org/festival](http://intofilm.org/festival)

Primary screening 7 November 1pm  
Secondary screening 14 November 1pm

### NOVEMBER

**Five Seasons - The Gardens Of Piet Oudolf (2017)**  
Sunday 3 November 2pm

After completing a feature documentary on New York's High Line, award-winning filmmaker Thomas Piper met the inspirational designer and plantsman, Piet Oudolf, and the idea for a new project was born.

1hr 15mins Cert U  
Tickets £5, for earlybird £4 price: book by 20 October.



**Rocket Man (2019)**  
Friday 22 November 7pm

'Rocketman' is an epic musical fantasy about the uncensored human story of Sir Elton John's breakthrough years, starring Taron Egerton.

2hrs Cert 15  
Tickets £5, for earlybird £4 price: book by 8 November.

tickets: [thehorsebridge.org.uk/tickets](http://thehorsebridge.org.uk/tickets) or 01227 281174

### NOVEMBER

**M Fisherman's Friends (2019)**  
Thursday 28 November 2pm

Based on the true story of a group of Cornish Fisherman's rise to fame. London music executive (Daniel Mays) heads to a remote Cornish village of Port Isaac on a stag weekend where he's pranked by his boss (Noel Clarke) into trying to sign the shanty singing fishermen (led by James Purefoy).

1hr 50mins Cert 12A  
Tickets £4, for earlybird £3 price: book by 14 November.



### DECEMBER

**M On the Basis of Sex (2018)**  
Thursday 12 December 2pm

This is the powerful and timely true story of US Supreme Court Justice Ruth Bader Ginsburg who led the fight against gender discrimination and blazed an unprecedented trail for equality.

2hrs Cert 12A  
Tickets £4, for earlybird £3 price: book by 28 November.

OCTOBER ~~DECEMBER~~ 2019 9

CHARITY NO. 234288

THE **LINDLEY PLAYERS**

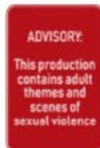
# FRANKENSTEIN

BY NICK DEAR



**23rd - 26th October, 7.45pm**

WEBSITE [www.playhouseworcester.co.uk](http://www.playhouseworcester.co.uk)  
 TELEPHONE 01223 272042  
 BOX OFFICE Monday to Saturday 10am - 12 noon  
 RESTRICTED WHEELCHAIR ACCESS | LICENSED BAR | HEARING LOOP



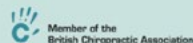
**Liz McGown**

**Louise Whorlow**

## CHIROPRACTORS

- Relieve Pain and Improve Function and Performance
- Back and Neck Pain, Headaches
- Sport Injuries, Joint Pain and Muscle Aches
- All Ages Welcome: Children, Teenagers, Adults and Elderly

**EVOLUTION HEALTH** 01227 273821  
 62 Borstal Hill  
 CT5 4NA



## HORSEBRIDGE TALKS

This season we welcome new talks from Paul Elliott along with a new season of *Art Decades*.

Paul Elliott introduces a series of talks which open a debate on mental health. These talks will include guest speakers and the opportunity to engage in discussion with an emphasis on how creativity can be used for positive change.

This *Art Decades* season strikes a modern theme. October sees an appraisal of the sharpest angles of Mod culture. With cinema perhaps the classic 20th/21st Century art form, its long and glorious association with music is celebrated in November, followed by a Christmas feast of one of its byproduct - the promotional music video.

Booking is recommended.



tickets: [thehorsebridge.org.uk/tickets](http://thehorsebridge.org.uk/tickets) or 01227 281174

### OCTOBER

#### ***Art Decades: The Modernists***

Thursday 17 October 7 - 8pm

Not the global art movement in the early 20th Century but the hyperactive subculture that helped define the sixties. To say that Mods were inspired by design is some understatement: it was all or nothing, as The Small Faces would say. The Modernists explores the artists that have had the biggest impact on the Mod movement throughout the decades.

Tickets: £7

### NOVEMBER

#### ***Art Decades: The Music Lovers***

Thursday 14 November 7 - 8pm

The combination of music with film occasionally reaches Olympian heights, while rock music and rock stars onscreen has swung from the sublime to the ridiculous - with Bowie calling Just A Gigolo 'all my Elvis movies rolled into one'. The Music Lovers lovingly presents rightly-celebrated highlights-and some real howlers.

Tickets: £7

#### **Be a Man**

Tuesday 19 November arrive 7pm for 7.30pm

Paul's first talk is on International Men's Day and begins an ongoing discovery over future talks of what it is to be a man... but hang before I continue I hear you ask 'isn't every day men's day?' Funnily enough this very question frames the talk. Talk held in Cafe Revival.

FREE

OCTOBER DECEMBER 2019 11



## HORSEBRIDGE SHOP

Visit our shop for a range of cards, prints, ceramics, glassware, homeware, bags, t-shirts, accessories and craft kits for kids. We aim to stock work that is designed and made locally and sustainably. We are also stockists for Selfie Clothing a super cool range of colour in t-shirts and caps for children.

Your purchases will directly support the centre and local artists. **HORSEBRIDGE FRIENDS** receive a 10% discount in the shop, find out more on "horsebridge friends" on page 47.



## MEET THE MAKER

We are really excited to start stocking prints, cards and ceramics by painter and print maker **Jo Oakley** in the shop this Autumn.

Her work celebrates her love of the precious objects she has long collected and the seascape where she lives in East Kent.



**Jane Padgham's** popular fused glass pictures featuring a tiny red sail boat are inspired by sailing off the coast of Herne Bay in her youth.

Jane fell in love with working with glass and its ability to transmit, transform and hold light through colour and texture. Each individual piece is handmade in her studio in Ashford and then fused using a kiln.

We also sell Jane's jewel coloured earrings, hairclips, hanging decorations and tealight holders.



Shopping at Horsebridge supports local makers and more art for all.

## HORSEBRIDGE TALKS

### DECEMBER

#### **Art Decades: Screen Icons**

Wednesday 18 December 7 - 8pm

If creating an instant classic in 3 minutes or under is a challenge, what about a striking and truly memorable video to go with it? Musicians of all stripes have occasionally struck gold, often mining from the very best that cinema has to offer. Screen Icons celebrates this still young art form.

Tickets: £7



#### **Bah humbug: I hate Christmas**

Tuesday 10 December arrive 7pm for 7.30pm

If you find Christmas a gruelling holiday that one has to endure then this talk may provide the antidote to all the horrid festivities. With a special guest Paul will seek to alleviate your seasonal anxieties. Talk held in Cafe Revival.

FREE



# FAR Skate Foundation

Supporting young people and the community

## Skateboard Shop

- Gift vouchers available
- Mini ramp on site
- Experienced skaters
- Advice and guidance
- All major brands
- over 250 boards in stock

## Learn to Sk8!

FAR Skate Club  
Saturday 10 - 11am  
First lesson free!

[f](https://www.facebook.com/farskateshop) [i](https://www.instagram.com/farskateshop)

[farskateshop.co.uk](https://www.farskateshop.co.uk)  
Unit 77 John Wilson Business Park,  
Whitstable, Kent, CT5 3QT 01227 779181

CHARITY COMMISSION  
FOR ENGLAND AND WALES

KEIBA  
WINNER

# samson & coles

Modern British Jewellery Gallery



Bespoke Design   Commissions   Repairs

13 Oxford St, Whitstable, CT5 1DB   01227 277985  
Opening hours: Tues - Sat 10.30am - 5.00pm

# Whitstable Artists' Open Houses 2019

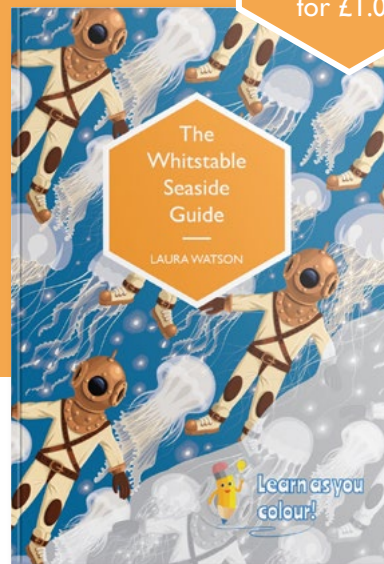
Weekends  
October:  
12th/13th 19th/20th 26th/27th

Open 11am - 5pm

[www.ekoh.org.uk/whitstable](http://www.ekoh.org.uk/whitstable)  
Brochures available at the Horsebridge

Commissioned by  
**THE HORSEBRIDGE  
ARTS CENTRE**

Available  
exclusively in the  
**HORSEBRIDGE SHOP**  
for £1.00



Supported by

 **The Cleary Foundation**



tickets: [thehorsebridge.org.uk/tickets](https://thehorsebridge.org.uk/tickets) or 01227 281174

## CLUBS GROUPS

Get involved in the clubs and groups that meet  
at **THE HORSEBRIDGE**

### BEAD 'N' BANTER BEADING CLUB

**One Wednesday a month**

2 Oct, 6 Nov, 4 Dec 10am - 12.30pm

Bring along your beadwork and enjoy chatting and making new friends and exchange ideas and tips on this absorbing hobby.

We have a monthly raffle, quarterly challenges, discussions on the latest magazines and books, and much much more.

£5







## MARGO SELBY

Bradstowe House | 35 Middle Wall  
Whitstable, Kent CT5 1BJ  
01227282758

Woven Textiles & Original Artworks

—  
Visitors Welcome  
Weaving Studio & Shop  
Monday - Friday (excl. Bank Holidays)  
10am-4pm

—  
For our online store, events and weaving  
workshops visit:

[margoselby.com](http://margoselby.com)

PURE  
indulgence by the sea

Beauty

Aesthetics

Menopause Meet Ups!

Christmas Gift Vouchers

Complementary Therapies

10%  
Discount! Quote HB20  
Expires 5..12.19

110 High Street, Whitstable, Kent CT5 1AZ  
01227 772176 07726494278 [www.purebythesea.co.uk](http://www.purebythesea.co.uk)



## GALLERY EXHIBITIONS

Our galleries offer a diverse and dynamic exhibition programme throughout the year. They serve as a platform to showcase work from a wide range of artists as well as art, heritage and community projects curated by The Horsebridge.

The galleries are free to visit and are open to public every day apart from the first and last day of the exhibition dates which are dedicated installation and de-installation days.

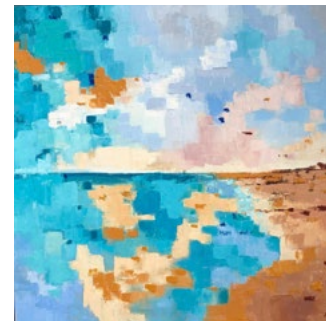
25 September - 8 October



**Anniversaries**  
Locus Arts

Locus Arts members take inspiration from artistic anniversaries that fall in 2019, working in paint, ceramics, glass, and mixed media.

25 September - 8 October



**The Smell of the Sea!**  
Ann Palmer

Ann's oil paintings depict the land, sea and sky at various times of day and year, state of the tide and weathers. Her style is impressionistic, tending towards some abstraction..

We are now accepting exhibition proposals for 2020.  
Email [galleries@thehorsebridge.org.uk](mailto:galleries@thehorsebridge.org.uk) for more information.

74 <b>W</b> Tungsten 183.84	1 <b>H</b> Hydrogen 1.00794	53 <b>I</b> Iodine 126.90447	117 <b>Ts</b> Tennessine [294]	73 <b>Ta</b> Tantalum 180.94788	5 <b>B</b> Boron 10.811	116 <b>L</b> Livermorium [293]	63 <b>E</b> Europium 151.964
67 <b>Ho</b> Holmium 164.93032	86 <b>Rn</b> Radon [222]	34 <b>Se</b> Selenium 78.96	35 <b>Br</b> Bromine 79.904	53 <b>I</b> Iodine 126.90447	105 <b>D</b> Dubnium [268]	32 <b>Ge</b> Germanium 72.63	

## PReseNTs

63 <b>E</b> Europium 151.964	116 <b>Lv</b> Livermorium [293]	63 <b>E</b> Europium 151.964	25 <b>Mn</b> Manganese 54.938045	63 <b>E</b> Europium 151.964	7 <b>N</b> Nitrogen 14.0067	69 <b>T</b> Thulium 168.93421
19 <b>K</b> Potassium 39.0983	63 <b>E</b> Europium 151.964	7 <b>N</b> Nitrogen 14.0067	69 <b>T</b> Thulium 168.93421	© 2019 mykeweb.com		

Element **Kent** (21 - 27 October) is a collaborative **Arts** and **Science** event designed to introduce young people to **The Periodic Table of Chemical Elements** in its 150th year.

**The Horsebridge** galleries will be transformed into a **Creative Laboratory** that will include themed workshops, art sessions, chemistry board games, a community talk and even a chemistry inspired bake-off! The centrepiece will be entries from the **Kent Photographic Periodic Table Competition** along with **Periodic Table** entries from various schools and community groups around the county.

All events will be free of charge but booking is advised.

For more information on all the activities and to book your child's place please visit our website.

more info: [thehorsebridge.org.uk/elementkent](http://thehorsebridge.org.uk/elementkent)

## GALLERY EXHIBITIONS

11 - 19 October



**Digital x Creativity #2**  
YDM participants

Young Digital Makers is a Reaching Communities, Big Lottery 2 year funded project which has provided digital and creative skills to young people aged 7-24 years old, from the Whitstable and Herne Bay district.

Since January 2018, a Core Group of teenagers have attended regular sessions, engaging in a wide range of activities, all stemming from Digital Creativity.

To mark the end of the project, the Young Digital Makers have collaborated with graduates from the Diploma in Art & Design - Foundation Studies based at UCA Canterbury, to curate a multimedia exhibition that showcases the work they have created and celebrates the skills learnt throughout this unique experience.

21 - 27 October



**Celebrating 150 years of the Periodic Table**  
Element Kent

The Periodic Table of Chemical Elements is one of the most significant achievements in science, capturing the essence not only of chemistry, but also of physics, medicine, earth sciences and biology. This year is its 150th anniversary and during half term, the Horsebridge Arts Centre is proud to be hosting a fun packed series of creative events designed for young people, which combine Arts and Science to help celebrate and share in the spectacle.

This project is supported by the Royal Society of Chemistry Kent Local Section.

## Hut 23 Harbour Art Gallery

2 October - 8 October  
**Lindsay Wilkinson**  
Felting and Photographs

9 October - 15 October  
**Lola McDowell and Lorriane Kinnear**  
Textiles, Watercolours and Photographs

16 October - 22 October  
**Irene Southon**  
Studio Art Glass

23 October - 29 October  
**Tim Newland**  
Original Acrylic Paintings

30 October - 5 November  
**Janet Dance and Marion Shepherd**  
Acrylic Paintings and Jewellery

6 November - 12 November  
**Irene Southon**  
Studio Art Glass

13 November - 19 November  
**Lindsay Wilkinson**  
Felting and Photographs



Photo by Sue Carrae

**Open Thursday - Sunday and Bank Holidays**  
**Weekdays 11am - 4pm Weekends 10am - 5pm**  
**Contact [madeinwhitstable@gmail.com](mailto:madeinwhitstable@gmail.com)**  
**for further information**

20 November - 26 November  
**Daphne Candler**  
Acrylic Paintings and Prints

27 November - 3 December  
**Janet Dance and Marion Shepherd**  
Acrylic Paintings and Jewellery

4 December - 10 December  
**Irene Southon**  
Studio Art Glass

11 December - 17 December  
**Lola McDowell and Lorriane Kinnear**  
Textiles, Watercolours and Photographs

18 December - 24 December  
**Tim Newland**  
Original Acrylic Paintings

25 December - 31 December  
**Daphne Candler**  
Acrylic Paintings and Prints

31 December - 7 January 2020  
**Made in Whitstable**  
Group Show



Made In Whitstable



## GALLERY EXHIBITIONS

31 October - 4 November

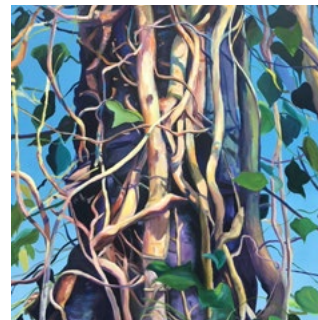


**Horsebridge Art Auction**  
Various artists

To support the work of the Horsebridge Charity, 2019 sees the return of the Horsebridge Art Auction.

This year, you will have the chance to submit a bid during a short viewing exhibition, featuring work donated by our generous artistic community. Please help us continue the good work of the centre through the purchase of your favourite artwork during this charity fundraising event.

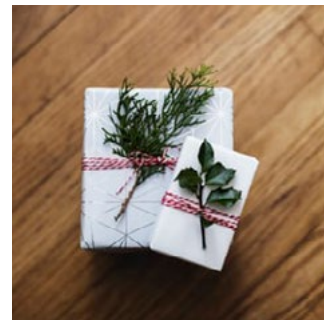
6 - 19 November



**A Journey Through the Landscape**  
Clare Kent and Faye Haskins

Paintings and prints investigate the experience of a journey, a visual and physical exploration of the natural world.

8 November - 2 December



**Horsebridge Handmade Christmas**

Enjoy browsing through a selection of festive gifts, handmade by our staff, volunteers and makers who feature in the Horsebridge shop. A lovely opportunity to pick up a Christmas cards, decorations, presents and perhaps even a little something for yourself.

Please see our website for more details on special seasonal creative workshops inspired by this handcrafted exhibition.



# HARBOUR Market WHITSTABLE

An open-air showcase of locally-created, British made, premium and hand-crafted goods and fine art. Micro eateries serve a mouth watering variety of food. Set in the working harbour of Whitstable.

Open every weekend (weather permitting) and 5 days a week during the summer.  
Pop-up Huts available to rent.

[www.harbourmarketwhitstable.co.uk](http://www.harbourmarketwhitstable.co.uk)



## GALLERY EXHIBITIONS

20 November - 3 December



**Limelight and Lanceolates**  
Angela and Steff Malone

One mother & daughters' modern take on 'Ophelia' by John Everett Millais. Diamond dusted watercolours of all things delicate will be on show alongside oil paintings to die for.

Angela taught Steffany to paint as a young girl and they both now work together from their studios in Kent to create delicate watercolours, pottery, portraiture and textiles.

4 - 17 December



**The Colours of Expression**  
Francesca Howard

Colour - to what extent does it reflect our mood?

How do we respond to positive versus negative emotions?

These themes are explored in a series of colour-charged paintings.

4 - 17 December



**Collective**  
Liz Wellstead and Lucy Stockwell

A Collaborative show between printmaker Lucy Stockwell and print designer Liz Wellstead.

Their work explores concepts which are based around social narratives within people's relationships and nostalgia to the Kent coast.

# SUMMER HIGHLIGHTS

## Workshops and Activities



## Community Celebrations



## Exhibitions



HORSEBRIDGE  
**ART**  
AUCTION

VIEWING EXHIBITION  
31 October -  
4 November

A great opportunity to  
bid for unique  
artworks and support  
the work of the Centre



**HORSEBRIDGE**  
**HANDMADE**  
*Christmas*

**8 NOV - 2 DEC**  
GALLERY 2

Festive cards, wrap, decorations  
and more handcrafted by our  
staff, volunteers and makers who  
feature in the Horsebridge shop.

All proceeds of sales will support  
the work of the Horsebridge Centre.

## ADULT CLASSES

There are many activities regularly taking place in the centre. Unless indicated these are not run by the Horsebridge so please use the contact information to contact the class tutors directly for any queries or to book.

Some classes only run during term time or have specific start dates, so please make sure you check before turning up.

You can find more information about all of the classes at [thehorsebridge.org.uk/classes](http://thehorsebridge.org.uk/classes) or by contacting the tutors.

- art
- craft
- dance & fitness
- languages
- mind & body
- theatre
- well-being
- writing

### MONDAY

#### ■ Spanish Intermediate Conversation

with Kent Adult Education  
10am-12pm  
[www.kentadulteducation.co.uk](http://www.kentadulteducation.co.uk)

#### ■ Yoga Basics

with Bernadette Fisher  
5.45-6.45pm  
[www.bernadettefisheryoga.co.uk](http://www.bernadettefisheryoga.co.uk)

#### ■ Active Birth Pregnancy Yoga

with Liz Foreman  
7-8.30pm  
[lizforeman.activebirth@yahoo.co.uk](mailto:lizforeman.activebirth@yahoo.co.uk)

#### ■ Kent Coast Theatre (KCT)

with Lou Fowkes  
7-9pm  
[info@kentcoasttheatre.co.uk](mailto:info@kentcoasttheatre.co.uk)

### TUESDAY

#### ■ Hatha Yoga

with Linda Thompson  
10-11.30am  
[yogajoyful@gmail.com](mailto:yogajoyful@gmail.com)

#### ■ Italian Intermediate

with Kent Adult Education  
1-3pm  
[www.kentadulteducation.co.uk](http://www.kentadulteducation.co.uk)

#### ■ Vinyasa Yoga

with Monica Marini  
1-2.15pm  
[momoiah@yahoo.com](mailto:momoiah@yahoo.com)

#### ■ Yoga

with Emma Epton  
6.30-7.30pm  
[whitstablecommunityyoga@gmail.com](mailto:whitstablecommunityyoga@gmail.com)

### WEDNESDAY

#### ■ Callanetics Exercise Method

with Jennifer Watson  
10-11am  
[www.callanetics-canterbury.co.uk](http://www.callanetics-canterbury.co.uk)

#### ■ Heart Centred Yoga UK

Beginner yoga  
1-2.15pm  
[heartcentredyogauk@gmail.com](mailto:heartcentredyogauk@gmail.com)

#### ■ Pilates

with Stephanie Fancy  
6.30-7.30pm Intermediate  
7.30-8.30pm Beginners  
[www.facebook.com/fancypilates](http://www.facebook.com/fancypilates)

## ADULT CLASSES

### THURSDAY

#### ■ French for Fun

with Vicki Sullivan  
starting soon Beginners level 1  
[www.languageforfun.org](http://www.languageforfun.org)

#### ■ Hatha Yoga

with Linda Thompson  
10-11.30am  
[yogajoyful@gmail.com](mailto:yogajoyful@gmail.com)

#### ■ French Intermediate Parlons Français

with Kent Adult Education  
11.30am-12.30pm  
[www.kentadulteducation.co.uk](http://www.kentadulteducation.co.uk)

#### ■ Tai-Chi

with Christine Hopper  
12.30-1.30pm  
[christinehopper@talktalk.net](mailto:christinehopper@talktalk.net)

#### ■ French Advanced

with Kent Adult Education  
1-3pm  
[www.kentadulteducation.co.uk](http://www.kentadulteducation.co.uk)

#### ■ Flamenco Dance

with Charlotte Baynes  
5.15pm-6.15pm Mixed level  
[charlottebaynes.com](http://charlottebaynes.com)

#### ■ Body Control Pilates

with Alison Cobley  
5.45-6.45pm Beginners  
7-8pm Mixed ability  
[www.pilateswithalison.net](http://www.pilateswithalison.net)

### FRIDAY

#### ■ French for Fun

with Vicki Sullivan  
9-10.30am Beginners level 3  
10.40-12.10 Improvers level 1  
[www.languageforfun.org](http://www.languageforfun.org)

#### ■ Ballet & Contemporary Dance

with Rosita Yarboy  
10-11am  
[www.reachperformance.co.uk](http://www.reachperformance.co.uk)

#### ■ Adult Tap Dance

with Rosita Yarboy  
11am-12pm  
[www.reachperformance.co.uk](http://www.reachperformance.co.uk)

### SATURDAY

#### ■ Yin Yoga

with Emma Epton  
9.15-10.15am  
[whitstablecommunityyoga@gmail.com](mailto:whitstablecommunityyoga@gmail.com)

#### ■ Diva Bollywood Dance Class

with Jasmin deSylva-Smith  
10.30-11.30am  
[jasmin@my-energise.co.uk](mailto:jasmin@my-energise.co.uk)

#### ■ Yoga Drop in

with Cass Xuxin  
11.45am-12.45pm  
[www.bernadettefisheryoga.co.uk](http://www.bernadettefisheryoga.co.uk)

### SUNDAY

#### ■ Life Drawing

with Ron Freeman  
11-1pm alternate Sundays  
[rgcfreeman@aol.com](mailto:rgcfreeman@aol.com)

#### ■ Slow Stitch

Yvonne Fuchs  
2-4pm second Sunday of the month  
[fuchsy141@hotmail.com](mailto:fuchsy141@hotmail.com)

#### ■ A Writing Course with a Difference

with Linda M James  
contact for dates  
[www.lindamjames.co.uk](http://www.lindamjames.co.uk)



# COME AND EXPLORE THE WIDE RANGE OF EVENTS THE UNIVERSITY OF KENT HAS TO OFFER!



[www.kent.ac.uk/events](http://www.kent.ac.uk/events)

University of  
**Kent**

## ADULT CLASSES

### ■ Art

**Life Drawing** with Ron Freeman

**11am-1pm Sunday**

*Alternate Sundays contact for dates.* If you would like to join these informal sessions, please speak to Ron.

CONTACT: 07749 835036 [rgcfreeman@aol.com](mailto:rgcfreeman@aol.com)

### ■ Craft

**Slow Stitch** with Yvonne Fuchs

**2-4pm Sunday**

New course of 9 sessions monthly will commence in April 2020. Please email to reserve your place or more info as the course sells out very quickly. Beginners and more advanced students welcome.

CONTACT: 07782 210304 [fuchsy141@hotmail.com](mailto:fuchsy141@hotmail.com)

### ■ Dance and Fitness

**Callanetics® Exercise Method** with Jennifer Watson

**10-11am Wednesday**

Lose at least one dress size in 10 hours! Safely strengthen your whole body, especially core and pelvic floor, and dramatically improve your posture.

CONTACT: 07966 731323 [watsonjennifer16@gmail.com](mailto:watsonjennifer16@gmail.com) [www.callanetics-canterbury.co.uk](http://www.callanetics-canterbury.co.uk)

**Flamenco Dance** with Charlotte Baynes

**5.15-6.15pm Thursday**

*Mixed Level.* Enjoy an exciting array of Flamenco styles such as Alegrias, Bulerias, Guajiras + more. Charlotte is a highly experienced and inspired teacher within the arts. Ideally, wear shoes with a firm heel.

CONTACT: 07906 685109 [charlottedciz@yahoo.co.uk](mailto:charlottedciz@yahoo.co.uk) [charlottebaynes.com](http://charlottebaynes.com)

**Ballet & Contemporary Dance** with Rosita Yarboy

**10-11am Friday**

*For adults,* run by Reach Performing Arts.

CONTACT: 01227 369891 [reachacademy@sky.com](mailto:reachacademy@sky.com) [www.reachperformance.co.uk](http://www.reachperformance.co.uk)

**Adult Tap Dance** with Rosita Yarboy

**11am-12pm Friday**

Run by Reach Performing Arts.

CONTACT: 01227 369891 [reachacademy@sky.com](mailto:reachacademy@sky.com) [www.reachperformance.co.uk](http://www.reachperformance.co.uk)

## ADULT CLASSES

**Diva Bollywood Dance Class** with Jasmin deSylva-Smith **10.30-11.30am Saturday**  
An hour to let your inner Diva out! A sneaky work out for your mind and body, it's fun to follow, simple routines. Everyone welcome.  
**CONTACT:** 07761 199179 [jasmin@my-energise.co.uk](mailto:jasmin@my-energise.co.uk)

## Languages

**Spanish Intermediate Conversation** with Kent Adult Education **10am-12pm Monday**  
**CONTACT:** 03000 412222 [www.kentadulteducation.co.uk](http://www.kentadulteducation.co.uk)

**Italian Intermediate** with Kent Adult Education **1-3pm Tuesday**  
**CONTACT:** 03000 412222 [www.kentadulteducation.co.uk](http://www.kentadulteducation.co.uk)

**French Intermediate Parlons Français** with Kent Adult Education **11.30am-12.30pm Thursday**  
**CONTACT:** 03000 412222 [www.kentadulteducation.co.uk](http://www.kentadulteducation.co.uk)

**French Advanced** with Kent Adult Education **1-3pm Thursday**  
**CONTACT:** 03000 412222 [www.kentadulteducation.co.uk](http://www.kentadulteducation.co.uk)

**French for Fun** with Vicki Sullivan **starting soon** Beginners level 1 **Thursday**  
**9-10.30am** Beginners level 3 **Friday**  
**10.40am-12.10pm** Improvers level 1 **Friday**

Fun, sociable French classes, focussed on conversation skills following a structured course.  
**CONTACT:** 07889495577 [vicki@languageforfun.uk](mailto:vicki@languageforfun.uk) [languageforfun.org](http://languageforfun.org)

## Mind & Body

**Yoga Basics** with Bernadette Fisher **5.45-6.45pm Monday**  
Classical Hatha Yoga for those new to yoga, returning, or seeking a slower class.  
**CONTACT:** 07739 302870 [bernadetteanne@aol.com](mailto:bernadetteanne@aol.com) [www.bernadettefisheryoga.co.uk](http://www.bernadettefisheryoga.co.uk)

**Vinyasa Yoga** with Monica Marini **1-2.15pm Tuesday**  
A dynamic and energising practice open to those with a more developed Yoga practice and/or a good level of stamina. These classes are defined by principles of Vinyasa Krama (intelligent sequencing) and include exploration of alignment, arm balances and the practice of inversions.  
**CONTACT:** 01227 273147 07913 887108 [momoiah@yahoo.com](mailto:momoiah@yahoo.com)

## ADULT CLASSES

**Hatha Yoga** with Linda Thomson **10-11.30am Tuesday**  
**10-11.30am Thursday**

A space during the busy and often stressful week for you to stretch in classical yoga postures. For all levels, beginners welcome.  
**CONTACT:** 07516 494300 [yogajoyful@gmail.com](mailto:yogajoyful@gmail.com)

**Yoga** with Emma Epton **6.30-7.30pm Mixed Level Tuesday**  
Yoga Alliance UK registered teacher. Emma is also pregnancy yoga trained.  
**CONTACT:** 07891 454450 [whitstablecommunityyoga@gmail.com](mailto:whitstablecommunityyoga@gmail.com)

**Heart Centred Yoga UK** **1-2.15pm Wednesday**  
Beginner Yoga. Yoga Poses, meditation and breathing practice followed by a blissful relaxation.  
**CONTACT:** 07955 850215 [heartcentredyogauk@gmail.com](mailto:heartcentredyogauk@gmail.com)

**Pilates** with Stephanie Fancy **6.30-7.30pm Intermediate Wednesday**  
**7.30-8.30pm Beginners Wednesday**

Both classes for men and women. Strengthen your body, mind and spirit.  
**CONTACT:** 07890 897851 [stephaniefancy@gmail.com](mailto:stephaniefancy@gmail.com) [www.facebook.com/fancypilates](http://www.facebook.com/fancypilates) Instagram: fancypilates

**Tai-Chi** with Christine Hopper **12.30-1.30pm Thursday**  
T'ai Chi Ch'uan style is the traditional Yang form. When practiced regularly T.C.C brings noticeable improvement at physical, energetic, and emotional levels. The health benefits of a serious practice are rapidly felt in daily life. Booking essential.  
**CONTACT:** [christinehopper@talktalk.net](mailto:christinehopper@talktalk.net)

**Body Control Pilates** with Alison Cobley **5.45-6.45pm Beginners Thursday**  
**7-8pm Mixed Ability Thursday**

Practice pilates regularly and your body will become stronger, toned and more flexible. Suitable for people of all ages and levels of fitness. Small class sizes - maximum 12 participants.  
**CONTACT:** 07903 010816 [alisonpilates@aol.com](mailto:alisonpilates@aol.com) [www.pilateswithalison.net](http://www.pilateswithalison.net)

**Yin Yoga** with Emma Epton **9.15-10.15am Saturday**  
Yin Yoga targets the deep connective tissues of the body. Connecting to the meridian lines in the body and encompasses Daoist principals and traditional yoga.  
**CONTACT:** 07891 454450 [whitstablecommunityyoga@gmail.com](mailto:whitstablecommunityyoga@gmail.com)

# MERIDIAN

## Meridian are inline with all your Mortgage Needs

We recommend from the whole of the market and offer a FREE no obligation initial consultation



- Mortgages
- Remortgages
- Buy to Let Mortgages
- Bridging Loans / Fast Finance
- Secured Loans
- Home Insurance
- Life Assurance
- Critical Illness
- Income Protection

### Meridian Consultants

50 - 52 Oxford Street, Whitstable, Kent CT5 1DG

Call us today on **01227 26 66 88**

[info@meridian-mortgages.co.uk](mailto:info@meridian-mortgages.co.uk)

YOUR HOME MAY BE REPOSSESSED IF YOU DO NOT KEEP UP REPAYMENTS ON YOUR MORTGAGE.

Meridian is a trading style of Rosemount Financial Solutions Ltd who are an appointed representative of Intrinsic Financial Planning Limited (Registered in England 5372217) and Intrinsic Mortgage Planning Limited, which are authorised and regulated by the Financial Conduct Authority. Intrinsic Financial Planning Ltd and Intrinsic Mortgage Planning Limited are entered on the FCA register under reference 440703 and 440718.

## ADULT CLASSES

### Yoga Drop in with Cass Xuxin

**11.45am-12.45pm Saturday**

Explore the benefits of Yoga and the fascinating power of breathing.

CONTACT: 07780 543848 [namaste@yogawithcass.co.uk](mailto:namaste@yogawithcass.co.uk)

### ■ Theatre

### Kent Coast Theatre (KCT) with Lou Fowkes

**7-9pm Monday**

Engaging community & inspiring potential, KCT is a community theatre company based at the Horsebridge. Productions and acting workshops throughout the year for adults 16+.

CONTACT: 01227 280314 [info@kentcoasttheatre.co.uk](mailto:info@kentcoasttheatre.co.uk) [www.kentcoasttheatre.co.uk](http://www.kentcoasttheatre.co.uk)

### ■ Well being

### Active Birth Pregnancy Yoga with Liz Foreman

**7-8.30pm Monday**

A friendly class that aims to help you meet the challenges and transformations of pregnancy and birth with confidence and a smile.

CONTACT: 01227 275597 [lizforeman.activebirth@yahoo.co.uk](mailto:lizforeman.activebirth@yahoo.co.uk) [www.lizforeman-yoga.com](http://www.lizforeman-yoga.com)

### ■ Writing

### A Writing Course with a Difference with Linda M James

**contact for dates Sunday**

If you'd like to join a writing course that not only shows you how to improve your short story or novel writing skills to publication level, but also shows you where and how to market your work, then this is the course for you.

CONTACT: 01227 634107 [lindamjames@gmail.com](mailto:lindamjames@gmail.com) [www.lindamjames.co.uk](http://www.lindamjames.co.uk)



CHARITY NO. 234288

**THE LINDLEY PLAYERS**  
YOUTH GROUP

**THE RAILWAY CHILDREN**

THURSDAY 7TH - SATURDAY 9TH NOVEMBER

EVENING SHOWS AT 7:45 PM  
SATURDAY MATINEE AT 2:30 PM

WEBSITE [www.playhousewhitstable.co.uk](http://www.playhousewhitstable.co.uk)  
TELEPHONE 01227 272042  
BOX OFFICE Monday to Saturday, 10am - 12 noon  
RESTRICTED WHEELCHAIR ACCESS | LICENSED BAR | HEARING LOOP

SUITABLE FOR THE WHOLE FAMILY

PLAYHOUSE THEATRE WHITSTABLE



**ROSE**  
ELECTRICS

reliable  
female  
domestic  
electrician

**07395 492361**  
[rose@roseelectrics.co.uk](mailto:rose@roseelectrics.co.uk)  
[www.roseelectrics.co.uk](http://www.roseelectrics.co.uk)

Whitstable  
Nutrition Centre

A friendly, independent family  
run health shop trading in  
Whitstable since 1970

81 High Street, Whitstable, Kent CT5 3DY

01227 278 550  
[whitnutcentre@gmail.com](mailto:whitnutcentre@gmail.com)  
[@whitstablenuutri](https://www.instagram.com/whitstablenuutri)

DIGITAL X CREATIVITY #2  
GALLERY 1 X 2

Engaging young people  
in digital creativity

Yes

11/10/2019  
20/10/2019

@ THE HORSEBRIDGE CENTRE

**YOUNG  
DIGITAL  
MAKERS**

THE HORSEBRIDGE  
ARTS CENTRE



# THE HORSEBRIDGE ARTS CENTRE

## parent and toddler messy ARTtime

every  
**Thursday**  
9.30 to 10.30am

£3 including a child's cold drink

Our messy play group is perfect for small budding artists! All materials will be provided for an hour of creative play, no minimum age but children must be accompanied by a parent or guardian.

**3 October** Painty Hedgehogs

**10 October** Make your own toy town blocks

**17 October** Spider Hats

**31 October** Puffy Ghosts And Hanging Bats

**7 November** Messy Fireworks

**14 November** Make a Sparkler Wand

**21 November** Messy Painting

**28 November** Paper Winter Scenes

**5 December** Cocoa Cards

**12 December** Make a Reindeer

## CHILDRENS CLASSES AND WORKSHOPS

There are a range of activities regularly taking place in the centre for children. Unless indicated these are not run by The Horsebridge so please use the contact information to contact the class tutors directly for any queries or to book.

Some classes only run during term time or have specific start dates, so please make sure you check before turning up.

You can find more information about all of the classes at [thehorsebridge.org.uk/kids](http://thehorsebridge.org.uk/kids) or by contacting the tutors.

- art
- drama
- languages
- music

### MONDAY

■ **Hey Diddle Music**  
with Anita Memmott  
**9.20-10.05am 18months+ & 10.15-11am 0-18 months**  
[nitamemmott@gmail.com](mailto:nitamemmott@gmail.com)

### TUESDAY

■ **Musical Bumps Mixed Age**  
with Kirsty Ottaway  
**10-10.45am 0 - 4 years**  
[www.musicalbumps.com](http://www.musicalbumps.com)

### WEDNESDAY

■ **Baby Moonbeams, Little Moonbeams & Little Music Stars**  
with Katie Verner  
**10-10.40am walking to 3 years 10.50-11.30am 3 mths to walking**  
[www.littlemusicstars.net](http://www.littlemusicstars.net)

■ **La Jolie Ronde French for Children**  
with Vicki Sullivan  
**3.45-4.30 age 5-7 4.30-5.15pm age 8-10**  
[lajolieronde.co.uk](http://lajolieronde.co.uk)

■ **Playtime Theatre**  
with Sara Kettlewell  
**4-5pm 7-11yrs & 5-6.15pm 11-18 yrs**  
[www.playtimetheatre.co.uk](http://www.playtimetheatre.co.uk)

### THURSDAY

■ **Parent & Toddler Messy Art Time HORSEBRIDGEARTS**  
**9.30-10.30am (term time)**  
[thehorsebridge.org.uk/tickets](http://thehorsebridge.org.uk/tickets)

■ **La Jolie Ronde French for Children**  
with Vicki Sullivan  
**3.45-4.30pm Year R and year 1**  
[lajolieronde.co.uk](http://lajolieronde.co.uk)

■ **Young Makers Club HORSEBRIDGEARTS**  
**4-5pm 6yrs + (term time)**  
[thehorsebridge.org.uk/tickets](http://thehorsebridge.org.uk/tickets)

### SATURDAY

■ **La Jolie Ronde French for Children**  
with Vicki Sullivan  
**9.15-9.45am Pre-school French 9.45-10.30am age 10-12 10.30-11.15 age 7-9 11.15am-12pm age 6-7**  
[lajolieronde.co.uk](http://lajolieronde.co.uk)

■ **Family friendly workshops**  
with KittySugarPowertex  
**5 Oct - Wands and Skull 9 Nov - Christmas Wreaths/Plaque 7 Dec - Journals**  
[kittysugarpowertex@gmail.com](mailto:kittysugarpowertex@gmail.com)



Want to improve your existing space?  
Book a one hour no obligation consultation  
with us for your £40 donation to the  
**Horsebridge Centre.**  
You'll have some new ideas and the  
Horsebridge will be £40 better off.

Tweet us @spacemakerarch or  
call Louisa on 07846 851694.  
[www.spacemakerarchitects.co.uk](http://www.spacemakerarchitects.co.uk)

**Hey Diddle Music**

**We sing, we move, we learn, we smile!**

Music classes for babies through to pre-schoolers at  
The Horsebridge Centre on Monday mornings.

Specialist Dalcroze Eurhythmics teacher at  
Guildhall School of Music and Drama

Contact Anita Memmott  
[nitamemmott@gmail.com](mailto:nitamemmott@gmail.com) 07710 575 390

# Holiday Club

We provide out of school care for children ages 5 to 11 years during the school Holidays at  
Whitstable Junior School.

**Open 8.00 - 18.00 Monday to Friday**

Freshly cooked healthy meals are available each day.

For further information or to book, please visit our website [www.kindergartenkids.co.uk](http://www.kindergartenkids.co.uk)  
Alternatively, call head office on **01227 772200**



## CHILDRENS CLASSES AND WORKSHOPS

### ■ Art

#### Parent & Toddler Messy Art Time

**9.30-10.30am** (term time) **Thursday**

**HORSEBRIDGEARTS** Come and join us for an hour of creative play. All materials and a cold drink provided. Please see page 36 for dates and full listing of activities.

CONTACT: 01227 281174 [thehorsebridge.org.uk/tickets](http://thehorsebridge.org.uk/tickets)

#### Young Makers Club

**4-5pm** ages 6+ (term time) **Thursday**

**HORSEBRIDGEARTS** Come and take part in our weekly after school club and learn how to make and craft a variety of small projects. Please see page 40 for dates and full listing of activities.

CONTACT: 01227 281174 [thehorsebridge.org.uk/tickets](http://thehorsebridge.org.uk/tickets)

#### Family Friendly Workshops with KittySugarPowertex **10am-12pm** adults & children 7+ **Saturday**

Work alongside each other using a variety of materials to create a different craft in each workshop.

**5th October** - Wands and Skulls Workshop. Using Powertex, recycled fabric, wood and embellishments to create wands and skulls.

**9th November** - Christmas Wreaths/Plaque. Using Powertex, recycled fabric, vinyl records and embellishments to create Christmas decorations.

**7th December** - Journals. Using Powertex, recycled fabric, and embellishments to create a unique journal. Make great Christmas gifts.

CONTACT: 07772896854 [kittysugarpowertex@gmail.com](mailto:kittysugarpowertex@gmail.com) (Facebook) KittySugarPowertex

### ■ Drama

#### Playtime Theatre with Sara Kettlewell

**4-5pm** 7-11 years **Wednesday**  
**5-6.15pm** 11-18 years **Wednesday**

Fun drama workshops run by one of the South East's leading children's theatres. Term-time only.

CONTACT: 01227 266272 07758 729129 [playtime@dircon.co.uk](mailto:playtime@dircon.co.uk) [www.playtimetheatre.co.uk](http://www.playtimetheatre.co.uk)



# THE HORSEBRIDGE ARTS CENTRE

## Young MAKERS club

every  
**Thursday**  
during term-time  
4 to 5pm

For ages 6+  
£3 per child or £5 for two.  
Come and take part in our weekly after school club, crafting and making a variety of creative small projects. Booking with reception is advised.

**3 October** Life drawing with variety of styles and materials

**10 October** Flip pad animated volcanoes

**17 October** Animated magazine faces

**31 October** Halloween monoprinting and creature making

**7 November** Ink pad print landscapes

**14 November** Plasticine printing of objects and textures

**21 November** Bold colour block sculptures

**28 November** Tissue paper painting

**5 December** Glow jars and geodes

**12 December** Make paper decorations for Xmas

## CHILDRENS CLASSES AND WORKSHOPS

### ■ Languages

La Jolie Ronde French for Children with Vicki Sullivan

3.45-4.30pm age 5-7 **Wednesday**  
4.30-5.15pm age 8-10 **Wednesday**

3.45-4.30pm Year R and year 1 **Thursday**  
9.15-9.45am Pre-school French **Saturday**  
9.45-10.30am age 10-12 **Saturday**  
10.30-11.15am age 7-9 **Saturday**  
11.15am-12.00pm age 6-7 **Saturday**

The fun way to learn French with action songs, rhymes, role-play and stories. FREE trial session for all new families. Get in touch to find the right class for your child. Term time only.  
Booking required for all classes except Pre-school.

CONTACT: 01227 779126 07889 495577 lajolierondevicki@gmail.com www.lajolieronde.co.uk

### ■ Music

Hey Diddle Music with Anita Memmott

9.20-10.05am 18mths +, booking required **Monday**  
10.15-11am 0-18 mths, drop in class **Monday**

CONTACT: 07710 575390 nitamemmott@gmail.com

Musical Bumps Mixed Age with Kirsty Ottaway

10-10.45am 0 - 4 years **Tuesday**

High quality music classes for babies to pre-school children.

CONTACT: 0845 0943786 07934 921072 canterbury.faversham@musicalbumps.com www.musicalbumps.com

Baby Moonbeams & Little Music Stars with Katie Verner

10-10.40am walking-3yrs **Wednesday**  
10.50-11.30am 3mths-walking **Wednesday**

Pre-school music classes.

CONTACT: 07946 193733 whitstable@littlemusicstars.net www.littlemusicstars.net

Following on from the fantastic Whitstable Seaside Guide exhibition, the Seaside Guide is now available exclusively from the HORSEBRIDGE SHOP. Packed with illustrations and fascinating facts from along the seashore.

## EVOLUTION HEALTH

- Chiropractic
- Audiology
- Bowen Technique
- Chiropody / Podiatry
- Counselling Psychology
- Homeopathy
- Humanistic Counselling
- Hypnotherapy
- Therapeutic & Sport Massage



62 Borstal Hill  
Whitstable  
CT5 4NA  
TEL: 01227 273821

## Integrative Body Psychotherapy



Energy Work  
Breath Work

ruthhoskinsukcp@gmail.com  
www.body-psychotherapy.org.uk  
www.counselling-directory.org.uk

**Ruth Hoskins MA UKCP 07742 295506**

UNCOVER THE 'PUDDING PANS'  
ROMAN SAMIAN WARE POTS  
WHICH HAVE BEEN FOUND OVER  
MANY YEARS BY LOCAL FISHERMEN  
OFF WHITSTABLE'S COAST.



WE ARE CURRENTLY RECRUITING A GROUP OF  
YOUNG PEOPLE AGED 13 TO 25 YEARS OLD TO  
TAKE PART IN THE LARGER PROJECT OVER THE  
NEXT 8 MONTHS. YOU WILL RECEIVE HERITAGE  
TRAINING, A 5-DAY WORK PLACEMENT,  
WORKSHOPS WITH LOCAL ARTISTS, THE CHANCE TO  
ACHIEVE AN ARTS AWARD AND MORE.

FOR MORE INFORMATION PLEASE CONTACT:  
[nicola@thehorsebridge.org.uk](mailto:nicola@thehorsebridge.org.uk) or phone 01227 281174.

**THE LINDLEY PLAYERS**  
**HEROES**

WEDS 4TH - SAT 7TH DECEMBER  
7:45 PM

WEBSITE [www.playhousewhitstable.co.uk](http://www.playhousewhitstable.co.uk)  
TELEPHONE 01227 272042  
BOX OFFICE Monday to Saturday 10am - 12 noon  
RESTRICTED WHEELCHAIR ACCESS | LICENSED BAR | HEARING LOOP

AN AMATEUR  
PRODUCTION BY  
THE LINDLEY  
PLAYERS  
DEC 2019

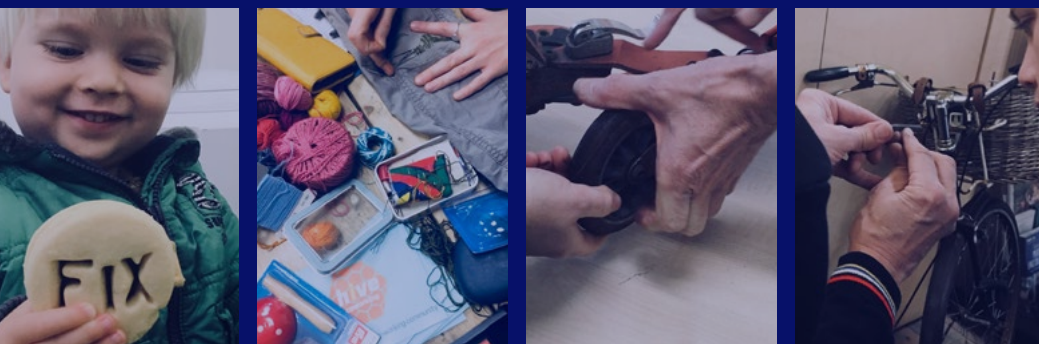
PLAYHOUSE  
THEATRE  
Whitstable



CANTERBURY  
ARCHAEOLOGICAL  
TRUST LTD







FOR INFORMATION AND UPDATES FOLLOW US ON FACEBOOK @repaircafewhitstable

**UPCOMING EVENTS**

SAT 20TH APR 10-12PM. HORSEBRIDGE CENTRE

SAT 18TH MAY 10-12PM. HORSEBRIDGE CENTRE

SAT 15TH JUN 10-12PM. STREAM WALK  
COMMUNITY GARDEN

SAT 20TH JUL 10-12PM. UMBRELLA CENTRE

SAT 21ST SEP 10-12PM. UMBRELLA CENTRE

SAT 19TH OCT 10-12PM. HORSEBRIDGE CENTRE

SAT 16TH NOV 10-12PM. UMBRELLA CENTRE

## ROOM HIRE AT HORSEBRIDGE

Rooms over three floors, serviced by a lift and offering accessible space for disabled people. A staffed reception to welcome and assist visitors along with a cafe providing refreshment throughout the day.

Room name	The Hub	W3	W5	W6	Performance Space	
					Mon-Fri	Sat & Sun
Hourly rate	£16	£12.50	£12.50	£12.50	£18	£26
Day rate	£90	£60	£60	£60	-	-
Room dimensions (m)	6.3 x 7.9	3.5 x 6	3.5 x 6	3.2 x 5 x 4.3	9.5 x 12	
Floor area (m²)	49	21	21	17.5	114	
Theatre seating capacity	40	16	16	15	150	
Boardroom seating capacity	24	8	8	12	50	
Standing capacity	45	20	20	20	240	

W3 and W5 offer sea views. The Hub and Performance Space are equipped with air conditioning.

**Quarter page**  
62mmx62mm

**Full page**  
130mmx130mm

**Half page**  
130mmx62mm

## advertise here

Book for one year and only pay for nine months.

This programme has a print run of 7,000.

It is distributed to local businesses, libraries, schools and the Friends of the Horsebridge.

An advert in our programme represents excellent value for money and helps us continue to serve the local community.

Contact [helen@thehorsebridge.org.uk](mailto:helen@thehorsebridge.org.uk)



# CGS Blinds & Shutters

SHUTTERS



VERTICAL



VENETIAN



ROLLER



PERFECT FIT



PLEATED



ROMAN



OFFICE  
OR HOME

◆ CONSERVATORY ROOFS ◆

*Come and visit our Showroom, and choose from Materials/Fabrics.*

*Expert advice with 1st Class service.*

*All blinds are custom made to your needs.*

**Supply Only Or Surveyed And Installed**

**146 Tankerton Road, Whitstable, Kent, CT5 2AW**

**01227 278643**

**www.cgsblinds.co.uk**



## HORSEBRIDGE FRIENDS

**We really need Friends** and we don't just mean the social media kind.

Pick up a copy of our 2018 Year in Review and you'll see we are doing really well at generating income, but you'll also notice that without the support of donations and Friends we just wouldn't be able to offer the services we do.

We are open seven days a week for 50 weeks of the year and welcome over 100,000 visitors through our doors. We work hard to find funding to support the range of exhibitions, classes, workshops and events that we offer. Without support from Friends and donations we wouldn't be able to support exhibitions like the stunning Think Of Me and thought provoking Waste Line exhibitions last year.

If **just 1% of the visitors** we anticipate for 2019 became Friends they would be helping us to generate nearly **10% of our income** for the year.

**Friend** - £20 a year (one person).

**Joint Friends** - £30 a year (two people)

### JOIN TODAY

To join the Friends please visit [thehorsebridge.org.uk/friends](http://thehorsebridge.org.uk/friends) or speak to us at the front desk in the centre.

## BENEFITS



Being a Friend is more than just a **warm glow in your heart**, it also comes with other useful benefits ...

**10% off** in the HORSEBRIDGE SHOP

**10% off** in Cafe Revival

Invitations to special events

Special Friends updates

Discount tickets on selected films and events

... all that for **just £20 a year** for an individual membership.

By supporting us as a Friend you are helping us show funders how much The Horsebridge is valued and wanted by its community.

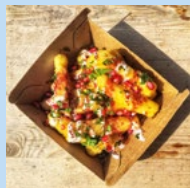
# CAFÉ REVIVAL

## @THEHORSEBRIDGE

NOW OPEN FOR ALL OF YOUR FOODIE  
NEEDS WITH BREAKFAST, LUNCH AND ALL DAY  
CAKES, BAKES AND LIGHT BITES FRESHLY  
COOKED ON SITE.

- \* MONDAY - SUNDAY
- \* EAT IN OR TAKEAWAY
- \* KIDS CORNER
- \* FAMILY, CHILD AND TEEN PAY IT FORWARD
- \* EVENTS AND CATERING AVAILABLE

PROFITS GO TOWARDS RAISING MENTAL HEALTH AWARENESS AND CHALLENGING STIGMA



# FREE TEA!

as a THANK YOU FOR READING  
THE AUTUMN 2019 BROCHURE  
YOU CAN CLAIM A FREE TEA.

JUST HAND IN THIS VOUCHER AT  
THE CAFÉ!

