

WHAT'S ON

April to
June 2017



cinema + workshops + classes + kids + galleries + shop + cafe

THE HORSEBRIDGE WHITSTABLE



Copperfields
OF WHITSTABLE

Cookshop & Gifts Since 1956

Inspiration for your kitchen and home

Cookware • Homeware • Gifts • Bakeware • Furniture • Electrical • Cards

shop@copperfieldsofwhitstable.co.uk • www.copperfieldsofwhitstable.co.uk
Open 7 days a week • 93-95 High St • Whitstable • Kent • CT5 1AY • Tel: 01227 273519

THE HORSEBRIDGE WHITSTABLE

April - June 2017

contents

	Page
Events	7
Galleries	13
What's on calendar	24
Workshops	27
Easter Workshops	28
Classes for Adults	33
Shop	36
Classes for Children	43
Room Hire	44
Friends	45
Cafe	47

Cover Image

Communal collage created during the Horsebridge Reimagined exhibition

supported by





FLOW & CO

BEAUTIFUL HAIR.
NATURALLY.

*Present this advertisement & receive
a 10% discount on your first service*

01227 271 225

3 Horsebridge Road, Whitstable, CT5 1AF
www.flowandco.co.uk

betty loves bryan

Two floors of contemporary art, homeware and clothes

And THE place to buy Breton stripes!

108 High Street, Whitstable, Kent CT5 1AZ

01227 271001 / 07788 910115

bettylovesbryan@btconnect.com • www.bettylovesbryan.com



Follow us on Twitter
@lizziedesign

Like us on
Facebook

Follow us on Instagram
@betty_loves_bryan

welcome

The Horsebridge Arts Centre is located in the heart of Whitstable on a site which has a long tradition of **community** and **cultural activity**. Since its launch in April 2004, the Horsebridge has established itself as a quality venue at the **heart of arts**, social, **learning** and leisure activities in Whitstable and the wider north east Kent area.

The Horsebridge Centre has a packed programme of **activities all year** round. Our spaces include ground floor **galleries**, workshops, **cafe** with balcony and a large multi purpose space which hosts **screenings**, talks, classes and **events**.

Admission to the centre is **free** and we are a registered **charity** which relies on the support of our users and the public to continue this valuable resource.



**Fishslab
Gallery**
11 Oxford Street
Whitstable

 Fishslab Art Gallery
 @fishslab1

Art Gallery
www.fishslabgallery.co.uk



french...
**inspired
interiors**

furniture... textiles...
upholstery... gifts...
re-upholstery...
curtains & blinds...
wallpaper & paint...
clothing... lighting...

**plus interesting
finds from France!**

Oxford Street, Whitstable
01227 634138
shop@frenchwhitstable.co.uk
www.frenchwhitstable.co.uk
 @french_whit
 frenchinteriors.whitstable
 Frenchinteriors.Whitstable

events

Equator: African Drumming and Singing Workshop

music

Wednesday 5 April 2:00 PM to 3:30 PM

For all ages and abilities

tickets £7



A hands-on session learning and playing southern African drum patterns and rhythms combined with singing some simple African songs. A short performance by our lead artist from the performance group U'Zambezi will follow the workshop.

Children can be unaccompanied from the age of 11yrs

Comic Club

club

Thursday 13 April, 11 May, 8 June 7-9pm

£4 to join, £2 thereafter



A great monthly club for lovers of comics and graphic novels — a heady mix of industry professionals and fans of the artform.

Have a beer and read great, inspiring, new or vintage graphic fiction.

18+.

MERIDIAN

Meridian are inline with all your Mortgage Needs

We recommend from the whole of the market and offer a FREE no obligation initial consultation



- Mortgages
- Remortgages
- Buy to Let Mortgages
- Bridging Loans / Fast Finance
- Secured Loans
- Home Insurance
- Life Assurance
- Critical Illness
- Income Protection

Meridian Consultants

50 - 52 Oxford Street, Whitstable, Kent CT5 1DG

Call us today on **01227 26 66 88**

info@meridian-mortgages.co.uk

YOUR HOME MAY BE REPOSSESSED IF YOU DO NOT KEEP UP REPAYMENTS ON YOUR MORTGAGE.

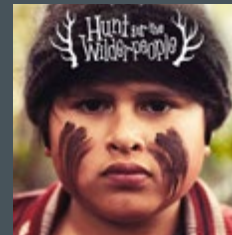
Meridian is a trading style of Rosemount Financial Solutions Ltd who are an appointed representative of Intrinsic Financial Planning Limited (Registered in England 5372217) and Intrinsic Mortgage Planning Limited, which are authorised and regulated by the Financial Conduct Authority. Intrinsic Financial Planning Ltd and Intrinsic Mortgage Planning Limited are entered on the FCA register under reference 440703 and 440718.

Horsebridge Matinees

Free tea or coffee and biscuit at every performance

film

Hunt For The Wilderpeople (2016)



Thursday 20 April 2:00 PM

tickets £5 earlybird £4

A national manhunt is ordered for a rebellious kid and his foster Uncle who go missing in the wild New Zealand bush, resulting in a combination of hilarious and poignant moments. 1hr 41mins. Cert 12A.

For earlybird discount book before 6 April.

Street Cat Named Bob (2016)



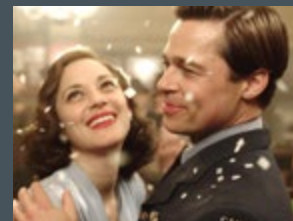
Thursday 25 May 2:00 PM

tickets £5 earlybird £4

Based on the international best selling book. The true feel good story of how James Bowen, a busker and recovering drug addict had, had his life transformed when he met a stray ginger cat. 1hr 43mins. Cert 12A.

For earlybird discount book before 11 May.

Allied (2016)



Thursday 22 June 2:00 PM

tickets £5 earlybird £4

In 1942, an intelligence officer in North Africa encounters a female French resistance fighter on a deadly mission behind enemy lines. When they reunite in London, their relationship is tested by the pressures of war. 2hrs 1mins. Cert 15.

For earlybird discount book before 8 June.

book by phone **01227 281174** or online horsebridge-centre.org.uk/tickets



MARGO SELBY

Woven textiles

Bradstowe House, 35 Middle Wall
Whitstable, Kent CT5 1BJ

Open Studio
Monday - Friday (excl. Bank Holidays)
10am - 4pm

+44(0)1227 282758
info@margoselby.com | www.margoselby.com

WHITSTABLE STOVE SHOP *Whether it's Winter heating, or Summer cooking, we reckon we have it covered.*



2 SADDLETON ROAD, WHITSTABLE, CT5 4JB. 01227 266209



Beyond the Bubble Whitstable's First Yoga Festival

Saturday 17 and Sunday 18 June

Indulge in a weekend of Yoga practices by the sea. Expand your yoga horizons with classes by the wide range of local teachers from Whitstable and East Kent. From the dynamic flow of Vinyasa to the precision of Iyengar Yoga, from Yoga for teens to the over 50s. There will be Yoga for men, Pregnancy Yoga, breathing sessions and meditation.

Local therapists will offer tester sessions. Traders in our hub market-place will bring delicious yogic foods to try and goods to buy.

Join us for an inspirational free Kirtan (concert with a difference) on Saturday evening. Learn, explore and have fun at Whitstable's First Yoga Festival.

Find out more on Facebook and at www.whitstableyogafestival.co.uk

book by phone **01227 281174** or online horsebridge-centre.org.uk/tickets



Easter Showcase at the Horsebridge

Wednesday 12th - Tuesday 18th April

 also has a permanent art and gift gallery at the Artisan Collaboration Market in Whitstable Harbour

Open all week, April – September

The Horsebridge
11 Horsebridge Rd, Whitstable, Kent, CT5 1AF

www.MadeInWhitstable.com



galleries

Our galleries are free to visit, with a wide range of exhibitions changing frequently. Artists, individually or in groups, can hire the galleries for up to 2 weeks on a non-commission basis. For information about hiring our galleries contact mirka@thehorsebridge.org.uk

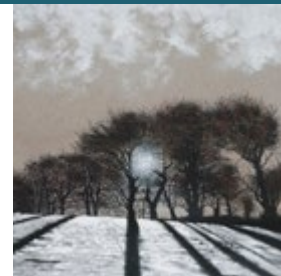
somerset maugham

22 march - 4 april

MAHL Exhibition

Angela Malone, Stephen Asquith, John Hughes, Peter Livesey

The MAHL group's 4th Exhibition: Formed in 2012 they have all exhibited in major London Galleries. They bring together a collection of sculptures, etchings, prints, oils and watercolours.



gallery 2

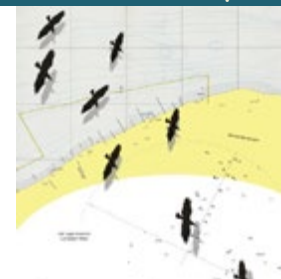
29 march - 4 april

From The Other Coast

Folkestone Arts Collective

Folkestone Arts Collective are delighted to present new work "From The Other Coast". The artists will be there from 12-4pm on Saturday 1st April. DO COME AND MEET US!

www.folkestoneartists.org.uk





Local fish from
Whitstable Harbour

Classic **French** Cuisine

Opening Times:

Lunch

Tues - Sun 12.00/2.30

Evenings

Tues - Mon 6.00/9.30

41 Harbour Street
Whitstable, Kent CT5 1AH
For reservations telephone:
01227 265337



offers all hair
services for

**Men
Women &
Children**

the salon also
provides a
Make-up and
beauty room
and
coffee shop!

133 Tankerton Road, Tankerton CT5 2AW

01227 637678

www.hqtankerton.com



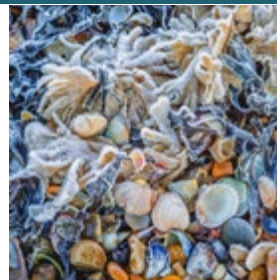
somerset maugham

5 - 11 april

Exposé 2017

Jonathan Henson, George Fisk, Adam Cowley, Judith Hall, Liam Stokes, Aliy Fowler, Stuart France, Phil Nacci, Clare Edmonds, Jackie Bell

A collaboration of ten local photographers, Exposé 10, returns in 2017. Each artist has their area of interest which results in diverse, creative works. The gallery will be a room with TEN views!



gallery 2

5 - 11 april

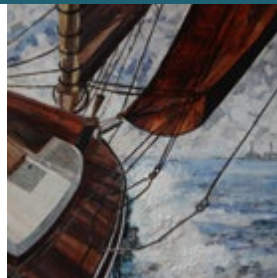
Ripping Landscapes

Fiona Spirals

Come and watch collage artist Fiona Spirals at work. View an exhibition of her painterly landscapes made from climbing magazines. Relish scenes of the Kent coast to Scotland, India and beyond.

fionaspirals.co.uk

www.facebook.com/rippinglandscapes



somerset maugham

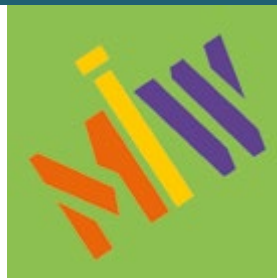
12 - 18 april

Made in Whitstable Easter Parade

Made in Whitstable

Fresh new art for a fresh new year! Made in Whitstable brings you an eclectic mix of artworks, all created by artists and makers living locally.

www.MadeInWhitstable.com



gallery 2

12 - 18 april

Works by Peter Nevett (1924 -2016)

Peter Nevett

Depictions of Canterbury and surrounding area by a former toy designer/ cartoonist who had a lifelong passion for painting. Includes caricatures and earlier Cubist influenced work. Proceeds to Dementia UK.



somerset maugham

19 - 25 april

SPRING

Khoa Mahon, Georgia Wyver, Joan Ward, Kate Baker, Susie Nelson-Jemmett, Chris Raper, Jean Sayers, Nicky Gregg

Exhibition showcasing contemporary silver jewellery embellished with pearls and semi- precious stones, felted decorative art objects, fashion garments and accessories, glass fusion and mosaic, painting and pottery.

www.khoa.co.uk www.cupolapottery.co.uk



gallery 2

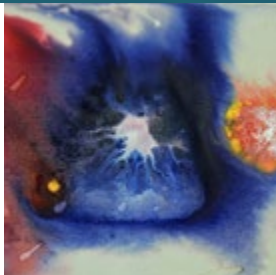
19 - 25 april

SPLASH!

Deborah Boardman

Abstract expressionist work in acrylic, watercolors and oil. Complementing modern coastal lifestyles with colourful art.

dzboardman.jimdo.com



somerset maugham

26 april - 2 may

Spring Exhibition

The Herne Bay Arts Group

The Herne Bay Arts Group is celebrating its 60th anniversary this year with their Spring Exhibition at the Horsebridge, presenting a selection of works in various media.

www.hbarts.co.uk



gallery 2

26 april - 2 may

Sea and Vines

Ann Palmer

Inspired by the vineyards chateaux and villages of the Loire Valley and Kent country and seaside, this latest exhibition showcases Ann's oil paintings and pen and ink sketches.

www.artfinder.com/ann-palmer

www.facebook.com/annatatticstudio



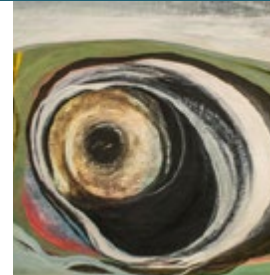
somerset maugham

3 - 16 may

New Works

The APART Group

The APART Group live and work in North Kent, meeting often to talk and work. They have diverse styles and techniques and are all inspired - even in love with - paint.



Chappell CONTEMPORARY

ART GALLERY

30 Oxford Street, Whitstable, CT5 1DD

+44 (0) 1227637329

www.chappellcontemporary.com | mail@chappellcontemporary.com



gallery 2

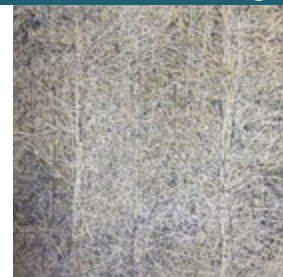
3 - 9 may

Treescapes

Angela Rumble

Oil paintings inspired by Kentish woodlands. Fragments of landscape are broken down into more abstract elements which are worked on in the paintings to produce obsessive and confusing detail and frequently somewhat unsettling results.

www.angelarumble.co.uk



gallery 2

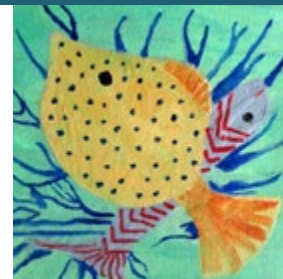
10 - 16 may

Landscapes and Miniatures

Joanna Winston MA and Christopher Hautot

Joanna's work is presented on 4" x 4" canvases combined to become part of a mosaic. Chris paints landscapes of Kent and Sussex using his camera and sketchpad en plein air.

joannawinston.co.uk



somerset maugham

17 - 23 may

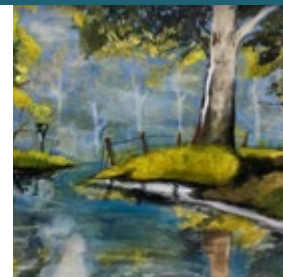
Forge Cottage Annual Exhibition

Forge Cottage Art Club members

Forge Cottage Art Club presents art work created by children and adults at our studio in Elmstone. Landscapes, still lifes, surreal and abstract paintings all feature at our annual exhibition.

www.markmasonart.co.uk

www.facebook.com/ForgeCottageArtClub



Robert Lincoln's Art Exhibition

Robert Lincoln

This exhibition features oil and acrylics of local scenes, buildings and characters, Kentish historical buildings, seasonal and international views, acrylic tiles, greeting cards, prints, portraits and fridge magnets.

www.oilsbychoice.co.uk

www.facebook.com/oilsbychoice



Urban Obsession 3

Catman, Kill Joy, Darkissed Dayze, Dream Safari, Timmy Newland, Paip, Original Gee, Zak Breaksprear, Tommy Gurr and Tri-State

Urban Obsession returns to the Horsebridge for its much anticipated third show. Kent's best and largest urban/stencil/graffiti exhibition.

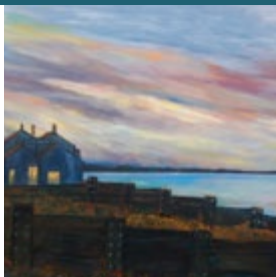
www.facebook.com/Urban-Obsession



The Summer Collections

Jean Markham, David Mullett and Philip Clark-Frewin

The show brings together David, an international artist of some repute, Philip, an established artist in oils and Jean who always pushes the boundaries in different mediums and has a great following.



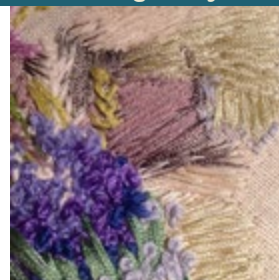
Coastal Collective

Tor Smith, Meg Chater, Jane Hillis, Sue Moreton, Susan Pickard

Felted animals and pictures by Tor Smith, wearable art in felt by Meg Chater, locally inspired ceramics by Sue Moreton, original card making by Jane Hillis and embroidered artwork by Susan Pickard.

www.facebook.com/coastalartscollective

www.facebook.com/textilecreationsbymeg

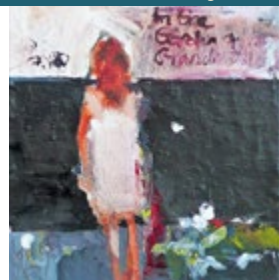


From Abstract to Reality

Eliza John, Tisha Tilston

This exhibition presents fleeting and suggestive abstract works of Eliza John alongside depictions of Kentish life in beautiful line by Letitia Tilston.

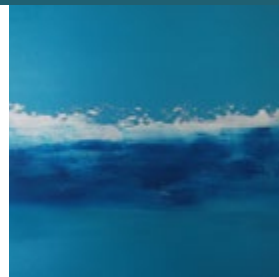
www.elizajohn.com



Fish Slab Collective

Barbara Drinkwater, Lin Fletcher, Lawrence Fletcher, Carey Still, Jennie Wright, Wendy Robinson, Sue Cavanagh, Cathy McTurk, Trish Flynn, Daphne Candler

The committee members running the Fish Slab Gallery once again get together and show their work in an eclectic exhibition.



gallery 2

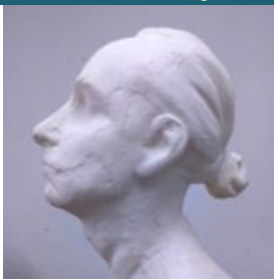
14 - 20 june

Getting A Head 2017

Brook Hobbins

'Getting A Head 2017' is a pop-up sculpture studio, exhibition of the artist's recent work and live portrait sculpture event.

www.brookhobbins.com



somerset maugham

21 june - 4 july

Canterbury Society of Art Summer Exhibition

Canterbury Society of Art

A large and varied selection of works by local artists - something to captivate everyone. Come and join us for our "Meet the Artist" session on Sat 24th June 2-4pm.

www.canterburysocietyofart.org.uk



gallery 2

21 - 27 june

Watercolour Exhibition

Bob Male

An exhibition of watercolour paintings, prints and notelets of local landscapes and seascapes. Also presented are paintings of animals and general subjects, and miniature paintings.



gallery 2

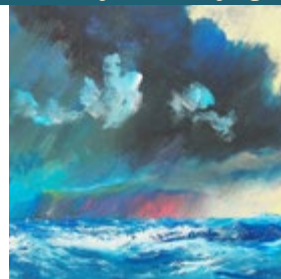
28 june - 4 july

Shoreline

Roger Mortimer

'Shoreline' assembles the artist's paintings of weather, light richness and movement of the coast - his evocative interpretations of the shoreline, both striking and colourful, painted mostly from memory in mixed media.

www.rogermortimerartist.co.uk



**WE
LOVE
SELLING & LETTING
PROPERTIES**

Call 01227 770717

Pay us a visit at:
98 High Street, Whitstable, Kent CT5 1AZ
or Email us: whitstable@reedsrains.co.uk



Reeds Rains

The Estate Agents

www.reedsrains.co.uk

what's on calendar

April

Wednesday 5	gallery	Collaboration of 10 local photographers	Exposé 2017	to April 11	p15
Wednesday 5	gallery	Fiona Spirals	Ripping Landscapes	to April 11	p15
Wednesday 5	event	Equator: African Drumming and Singing Workshop		2pm-3.30pm	p7
Wednesday 5	workshop	Des Res Bug Hotel	for age 5 to 12 years	10.30am-12pm	p29
Thursday 6	workshop	Driftwood Easter Tree	for age 5 to 12 years	10.30am & 12pm	p29
Friday 7	workshop	Pebble Creatures	for age 5 to 12 years	10.30am & 12pm	p29
Friday 7	drop-in	Get Creative! Giant Easter Egg Decorating	all ages	2pm-4pm	p31
Saturday 8	workshop	Des Res Eco Bug Hotel	for age 14 to adult	11am-1pm	p29
Sunday 9	workshop	Driftwood Easter Tree	for age 14 to adult	11am-1pm	p29
Monday 10	trail	Easter Art Trail		to April 17	p28
Wednesday 12	gallery	Made in Whitstable	Made in Whitstable Easter Parade	to April 18	p15
Wednesday 12	gallery	Peter Nevett	Works by Peter Nevett (1924 -2016)	to April 18	p16
Wednesday 12	drop-in	FREE! Easter craft session	up to 11 years	10am-12pm	p31
Wednesday 12	workshop	Easter Pottery Class for Kids	for age 3 to 6 years	1pm-1.45pm	p28
Wednesday 12	workshop	Easter Pottery Class for Kids	for age 6+ years	2pm-2.45pm	p28
Thursday 13	drop-in	FREE! Easter craft session	up to 11 years	10am-12pm	p31
Thursday 13	club	Comic Club		7-9pm	p7
Wednesday 19	gallery	Passion for craft (group)	SPRING	to April 25	p16
Wednesday 19	gallery	Deborah Boardman	SPLASH!	to April 25	p16
Thursday 20	film	Horsebridge Matinee : Hunt For The Wilderpeople		2pm	p9
Monday 24	workshop	Learn to Knit with Linda Tiley		1pm-4pm	p27
Wednesday 26	gallery	The Herne Bay Arts Group	Spring Exhibition	to May 2	p17
Wednesday 26	gallery	Ann Palmer	Sea and Vines	to May 2	p17
Wednesday 26	workshop	Learn to Knit with Linda Tiley		10:30am-1:30pm	p27

to book: horsebridge-centre.org.uk/tickets 01227 281174

May

Wednesday 3	gallery	The APART Group	New Works	to May 18	p17
Wednesday 3	gallery	Angela Rumble	Treescapes	to May 9	p19
Wednesday 10	gallery	J Winston, C Hautot	Landscapes and Miniatures	to May 18	p19
Thursday 11	club	Comic Club		7-9pm	p7
Wednesday 17	gallery	Forge Cottage Art Club	Forge Cottage Annual Exhibition	to May 23	p19
Wednesday 17	gallery	Robert Lincoln	Robert Lincoln's Art Exhibition	to May 23	p20
Wednesday 24	gallery	Group of 10 artists	Urban Obsession 3	to May 30	p20
Wednesday 31	gallery	Group of 3 artists	The Summer Collections	to June 13	p20
Wednesday 31	gallery	Group of 5 artists	Coastal Collective	to June 6	p21
Monday 22	workshop	Build Your Knitting Know-How with Linda Tiley		1pm-4pm	p27
Wednesday 24	workshop	Build Your Knitting Know-How with Linda Tiley		10:30am-1:30pm	p27
Thursday 23	film	Horsebridge Matinee : Street Cat Named Bob		2pm	p9

June

Wednesday 7	gallery	Eliza John, Tisha Tilston	From Abstract to Reality	to June 13	p21
Thursday 8	club	Comic Club		7-9pm	p7
Wednesday 14	gallery	Fish Slab committee members	Fish Slab Collective	to June 20	p21
Wednesday 14	gallery	Brook Hobbins	Getting A Head 2017	to June 20	p22
Saturday 17	festival	Beyond the Bubble Whitstable First Yoga Festival		to Sunday 18	p10
Monday 19	workshop	Diving In: Learn to knit a simple Shawlette		1pm-4pm	p27
Wednesday 21	gallery	Canterbury Society of Art	Summer Exhibition	to July 4	p22
Wednesday 21	gallery	Bob Male	Watercolour Exhibition	to June 27	p22
Wednesday 21	workshop	Diving In: Learn to knit a simple Shawlette		10:30am-1:30pm	p27
Thursday 22	film	Horsebridge Matinee: Allied		2pm	p11
Wednesday 28	gallery	Roger Mortimer	Shoreline	to July 4	p23

plus a huge range of adult and children's classes every day, details from page 33

GAVIN ESLER IN CONVERSATION

Join BBC journalist, author and University of Kent Chancellor Gavin Esler for an evening of conversation exploring the life and work of our special guests.

Tickets are just £5, with proceeds going towards the Kent Opportunity Fund which supports student hardship bursaries, scholarships and special projects.

All events have a dinner afterwards with tickets available for purchase separately.

The series returns this autumn, with guests including the humanitarian and author **Terry Waite CBE**, Conservative politician **The Rt Hon Michael Gove MP**, journalist and writer **Polly Toynbee** and the author of *The Establishment* and *Chavs*, **Owen Jones**.

Tickets go on sale this June – don't miss out!
Gulbenkian Theatre, University of Kent, Canterbury campus
www.kent.ac.uk/events/ E: events@kent.ac.uk



Gulbenkian
University of Kent

workshops

Knitting workshops with Linda Tiley M.Des(RCA)



Booking required for all workshops

Learn to Knit

Mon 24 April 1-4pm or Wed 26 April 10:30am-1.30pm

£30 for the 3 hour workshop

Learn to Knit is for absolute beginners, you will learn to cast on and off, and how to work Knit and Purl stitches, and how they form Ribs, Moss stitch, Stocking stitch, Garter stitch etc. There will be some guidance on selecting yarns for different projects, and the tools needed. A simple pattern for a bobble hat or a hot water bottle cover will be provided, as well as a ball of chunky yarn and a pair of Bamboo needles.

Build Your Knitting Know-How

Mon 22 May 1-4pm or Wed 24 May 10:30am-1:30pm

£30 for the 3 hour workshop

This workshop will help you to develop your skills, with an introduction to knitting with several colours in Fair Isle and Intarsia patterns, and basic tips about finishing techniques. A simple pattern will be provided for knitted Bunting, and a ball of yarn and Bamboo needles will be included. You will need to be able to cast on and off and work Knit and Purl stitches.

Diving In: Learn to knit a simple Shawlette

Mon 19 June 1-4pm or Wed 21 June 10:30am-1:30pm

£30 for the 3 hour workshop

This workshop will introduce you to 'knitter's' websites for inspiration and patterns, and start you off on a beautiful shawlette knitted in 4 ply yarn. We will look at a selection of shapes, styles and edgings. Info will be provided (in advance) on the types of yarns and needles which can be supplied by Whitknits. A £5 voucher towards materials will be included. This workshop is suitable for average ability knitters.

easter workshops

Easter Art Trail

Free fun activity for all the family

From 10 - 17 April 9.30 am - 3.00pm

each entrant receives a prize for taking part

Collect your clue sheet from the Horsebridge or the Umbrella and search for all the Easter themed artworks in selected shop windows between the Horsebridge Centre and the Umbrella.

The Easter artworks have been specially commissioned for this trail and will be raffled off after the trail. Tickets available from Horsebridge reception.

Easter Pottery class for kids

Booking required for all workshops

Children must be accompanied by an adult.

Wednesday 12 April 1.00 - 1.45pm for 3 to 6 years

2.00 - 2.45pm for 6+ years

£10 per child

An Easter themed pottery class for kids giving little ones a chance to have a play with clay. Everyone will make something that (once fired) they'll be able to take home. Carol, Sinead and Emma of Whitstable Pottery Lesson will be on hand to guide and help the children with their clay creations.

Once items have been fired, we will let you know and they will be available for collection from The Horsebridge reception. Price includes all materials and firing.

Please wear old clothes.



Easter Seaside workshops

with Sharon Cavalier

Booking required for all workshops

Des Res Bug Hotel

5-12 years

Wednesday 5 April 10.30am - 12pm

£12 advance / £14 on the day

Decorate a wooden town house and fill the rooms using natural seaside materials to hang in your garden.

Driftwood Easter Tree

5-12 years

Thursday 6 April 10.30-11.30am or 12-1pm

£5 advance / £7 on the day

Create a driftwood wall hanging tree that needs no watering adding seaside flotsam & jetsam as well as Easter chicks.

Pebble Creatures

5-12 years

Friday 7 April 10.30-11.30am or 12-1pm

£5 advance / £7 on the day

Create a pair of quirky giant pebble creature using a variety of craft materials.

Des Res Eco Bug Hotel

14 to adult

Saturday 8 April 11am - 1pm

£15 advance / £18 on the day

Decorate a bespoke wooden town house made from recycled pallets and fill the rooms using natural seaside materials to hang in your garden.

Driftwood Easter Tree

14 to adult

Sunday 9 April 11am - 1pm

£10 advance / £12 on the day

Create a driftwood wall hanging tree that needs no watering adding seaside flotsam & jetsam. Not just for Easter!



ALMA CAIRA GLASS FUSING WORKSHOPS 2017



BEGINNERS SATURDAY WORKSHOPS

13th May, 10th June

15th July, 12th August

10am - 3pm £60 PER SESSION

Why not treat someone to one of my gift vouchers?

Please contact me for further details or to make a booking.

www.almacaira.co.uk alma@almacaira.co.uk

01227 280 648 07947 842 642

Follow me on Facebook: AlmaCairaFusedGlass

CELLO AND PIANO TEACHER

Stephanie Brunton MAed

Experienced teacher
welcomes new pupils.
Adults and children from
beginners to advanced
levels.

01227-272206
stephaniebrunton
@mac.com



Integrative Body Psychotherapy



Energy Work
Breath Work

ruthhoskinsukcp@gmail.com

www.body-psychotherapy.org.uk

www.counselling-directory.org.uk

Ruth Hoskins MA UKCP 07742 295506

Chiropody Service



Evolution Health
62 Borstal Hill
Whitstable
Kent CT5 4NA

01227 273821
healing.field@yahoo.com

FREE! drop in Easter craft activities at the Horsebridge

Get Creative! Giant Easter Egg Decoration workshop

Friday 7 April 2-4pm

FREE activity for all ages

To help celebrate the 'Get Creative' campaign this April, join us by taking part in our collaborative community project to create a series of super-sized Easter eggs that will be displayed in our front showcase window over the Easter holidays. Drop in anytime between 2 – 4pm to help collage, paint, print, embellish and decorate the eggs.

All materials will be provided.

Get Creative is a campaign run by a group of cultural organisations to celebrate and support the everyday creativity happening in homes and public spaces. It aims to inspire people to try something new at home or at a Get Creative event and to encourage people to share their own examples of everyday creativity.

Easter Craft session

for children up to 11. Parent supervision required


Wednesday 12 April 10am - 12pm and Thursday 13 April 10am-12pm

FREE!

If you are looking for something creative to do with your children during the Easter holidays, we are offering free drop-in children's craft sessions in the Hub next to the cafe.

There will be Easter themed craft activities to create and take home and plenty of art materials to help little imaginations flow.

Thanks to ... Reculver School, Suzanne Lucas and members of the public for donation of craft materials, and the artists taking part in the Easter Trail for helping us make our Easter events possible.



Liz McGown Louise Whorlow
CHIROPRACTORS

- Relieve Pain and Improve Function and Performance
- Back and Neck Pain, Headaches
- Sport Injuries, Joint Pain and Muscle Aches
- All Ages Welcome: Children, Teenagers, Adults and Elderly

EVOLUTION HEALTH 01227 273821
 62 Borstal Hill
 CT5 4NA

GCC Registered
 General Chiropractic Council

Member of the
 British Chiropractic Association



Whitstable Nutrition Centre

A friendly, independent family run health shop trading in Whitstable since 1970

81 High Street, Whitstable, Kent CT5 3DY

01227 278 550

whitnutcentre@gmail.com

@whitstablenutri

samson & coles Ltd

Modern British Jewellery Gallery



Bespoke Design Commissions Repairs

13 Oxford St, Whitstable, CT5 1DB 01227 277985
 Opening hours: Tues - Sat 10.30am - 5.00pm

classes for adults

-
- art**
Tuesday **Tuesday Art Group** with Cathy McTurk : The Power of Colour
 3-5pm Creating Better Paintings Using Acrylics + Mixed Media. Learn how to create strong vibrant paintings, learning colour mixing and powerful expression through looser brushwork, expressionist and impressionist techniques, also exploring abstract issues in contemporary painting.
 Contact: 01227 264645 cathy@postlane.net www.catherinemcturk.co.uk
-
- art**
Wednesday **Pottery** with Carol Foster
 2.30-4.30pm 6 week course for £90. Beginners welcome plus opportunities for experienced makers to develop their skills.
- Wednesday** **evening class** 6.30-8.30pm 6 week course for £90. All abilities welcome.
 Contact: 01227 272144 carola.foster8@gmail.com
-
- art**
Sunday **Life Drawing** with Ron Freeman
 2-4pm Alternate Sundays, twice a month. If you would like to join these informal sessions, please speak to Ron.
 Contact: 07749 835036 mail@ronfreeman.co.uk
-
- craft**
Wednesday **Bead 'n Banter** with Jayne Johnson
 6-9pm First Wednesday of the month. Bring beadwork and exchange tips, with monthly raffle and quarterly challenges. Contact: 01227 265293 gillgoldfinch@btinternet.com www.rainbowcollection.co.uk
-
- craft**
Sunday **Stained Glass Taster Day** with Stephen Harries
 April 2nd 10:15am - 4.30pm £80 for the day. Learn the basics of stained glass work. You will be taught how to cut glass to a pattern and then lead and solder it to create your own beautiful leaded light panel.
 Contact: stephenharries.glass@gmail.com stephenharriesglass.co.uk

CGS Blinds & Shutters

SHUTTERS



VERTICAL



VENETIAN



ROLLER



PERFECT FIT



PLEATED



ROMAN



OFFICE
OR HOME

♦ CONSERVATORY ROOFS ♦

Come and visit our Showroom, and choose from Materials/Fabrics.

Expert advice with 1st Class service.

All blinds are custom made to your needs.

Supply Only Or Surveyed And Installed

107A Tankerton Road, Whitstable CT5 2AJ

01227 278643

www.cgsblinds.co.uk



dance
Friday

Ballet & Contemporary Dance with Rosita Yarboj

10-11am For adults, run by Reach Performing Arts. **Contact:** 01227 369891
reachacademy@sky.com www.reachperformance.co.uk

dance
Friday

Adult Tap Dance with Rosita Yarboj

11am-12 noon Run by Reach Performing Arts. **Contact:** 01227 369891
reachacademy@sky.com www.reachperformance.co.uk

dance
Saturday

Diva Bollywood Dance Class with Jasmin deSylva-Smith

10.30-11.30am An hour to let your inner Diva out! A sneaky work out for your mind and body, it's fun to follow, simple routines. Everyone welcome.
Contact: 07761 199179 jasmin@my-energise.co.uk

fitness
Monday

Boxercise with Graham Bedford

7-8pm For men and women. Graham Bedford has been teaching Boxercise for five years and is a qualified personal trainer.
Contact: 01795 590118 grahambedford@btinternet.com

fitness
Monday

Zumba with Hayley Acton

8.15-9.15pm Party yourself into shape with Latin-inspired, calorie-burning, dance fitness! Beginners welcome.
Contact: 07562 037318 hayleyacton@fsmail.net

fitness
Tuesday

Callanetics® Exercise Method with Jennifer Watson

9.30-10.30am and 10.30-11.30am Lose at least one dress size in 10 hours! Safely strengthen your whole body, especially core and pelvic floor, and dramatically improve your posture.
Contact: 07966 731323
watsonjennifer16@gmail.com www.callanetics-canterbury.co.uk

languages
Monday

Spanish Intermediate with Kent Adult Education

10am-12 noon **Contact:** 03000 412222 www.kentadulthoodeducation.co.uk

languages
Wednesday

Italian Beginners with Kent Adult Education

10am-12 noon **Contact:** 03000 412222 www.kentadulthoodeducation.co.uk



don't forget to
visit our super
SHOP

Pop into **THEHORSEBRIDGE** shop to find **ceramics**, t-shirts, **prints**, cards and a lot more all created by talented **local artists**. We are also stockists for the incredible **Djeco** range, a rarity of high quality at fantastic prices.

And your purchases will directly support the centre and local artists. The **gifts** that keep on **giving**.

languages Thursday	French Intermediate with Kent Adult Education 11.30am-12.30pm Alternate weeks. Contact: 03000 412222 www.kentadulteducation.co.uk
languages Thursday	French Intermediate Plus with Kent Adult Education 1-3pm Contact: 03000 412222 www.kentadulteducation.co.uk
literature Wednesday	The Brothers Karamazov by Fyodor Dostoevsky: An Introduction 10am-12noon 5 week course from 1st Feb. Join Frank Foley's LITE-Talks for an insightful exploration of one of the truly great works of world literature. Contact: frank.j.foley@gmail.com www.lite-talks.com
literature Friday	What is America? with Frank Foley 10am-12noon 10 week course from 6th Jan. Reading list is: Preparation for the Next Life (Atticus Lish), Lila (Marilynne Robinson) and American Pastoral (Philip Roth). Contact: frank.j.foley@gmail.com www.theliteraturelover.com
pilates Wednesday	Beginners Pilates with Stephanie Fancy 7.30-8.30pm Build core and muscle strength, breathing and mobility. Contact: 07890 897851 stephaniefancy@gmail.com
pilates Wednesday	Intermediate Pilates with Stephanie Fancy 6.30-7.30pm Challenge strength, control and balance. Small equipment used. Contact: 07890 897851 stephaniefancy@gmail.com
pilates Friday	Beginners Pilates with Anika Fit 2.30-3.15pm Improve your posture and core strength, reduce back pain, tone and stretch your muscles plus feel relaxed. Bring a mat, towel and a drink. Please book your class in advance and pay later. Contact: 07484 780328 AnikaFit@yahoo.co.uk www.active-fitness.vpweb.co.uk
pilates Friday	Mother and Baby Pilates with Anika Fit 3.30-4.15pm Bring your baby along to our gentle pilates class and return to exercise to get back in shape. These classes are for mummies with new babies to babies who are about to start crawling Contact: 07484 780328 AnikaFit@yahoo.co.uk www.active-fitness.vpweb.co.uk

The Painted Pearl

Vintage Modern Living

www.thepaintedpearl.co.uk

Paints • Wallpaper • Furniture • Gift Vouchers • Workshops

Home of otherworldly wallpapers by Whitstable designer Pearl de Bressy



Pearl de Bressy

Little Greene



115 Tankerton Road, Whitstable, Kent CT5 2AN 07734 721227



EVOLUTION HEALTH

- Chiropractic
- Chiropody / Podiatry
- Bowen Technique
- Cognitive Behavioural Therapy
- Counselling Psychology
- Homeopathy
- Hypnotherapy
- Physiotherapy
- Psychosexual and Couples Therapy
- Reflexology
- Therapeutic & Sport Massage



62 Borstal Hill
Whitstable
CT5 4NA
TEL: 01227 273821



theatre
Monday

Kent Coast Theatre (KCT) with Lou Fowkes & Alison Mead
7-9pm. Engaging community & inspiring potential, KCT is a community theatre company based at the Horsebridge. Productions and acting workshops throughout the year for adults 18+. Contact: 01227 280314
info.kentcoasttheatre@talktalk.net www.kentcoasttheatre.co.uk

well being
Wednesday

Family Constellations led by Tamara Watters MSc UKCP
6.30-8.30pm Starts April 5th. Constellations creates a dynamic opportunity for exploring and shifting issues in families, in ourselves and in relationships. Contact: 07463 713692

writing
Sunday

Creative Writing Course with a Difference with Linda M James
2-4pm Starting April 23, a 6 week writing course with published author and screenwriter Linda M James. Booking essential. Contact: 01227 634107 07969 051064
writingunderwater@tiscali.co.uk www.lindamjames.co.uk

yoga
Monday

Yoga Basics with Bernadette Fisher
5.45-6.45pm Classical Hatha Yoga for those new to yoga, returning, or seeking a slower class. Contact: 07739 302870 bernadetteannef@aol.com
www.bernadettefisheryoga.co.uk

yoga
Tuesday

Vinyasa Yoga with Monica Marini
1-2.15pm A dynamic and energising practice open to those with a more developed Yoga practice and/or a good level of stamina. These classes are defined by principles of Vinyasa Krama (intelligent sequencing) and include exploration of alignment, arm balances and the practice of inversions. Contact: 01227 273147 07913 887108 momoiah@yahoo.com

yoga
Tuesday

Yoga with Emma Epton
6.30-8pm Mixed Level. Yoga Alliance UK registered teacher. Emma is also pregnancy yoga trained. Contact: 07891 454450
whitstablecommunityyoga@gmail.com



Holiday Club

We provide out of school care for children ages 5 to 11 years during the school Holidays at Whitstable Junior School.

Open 8.00 - 18.00 Monday to Friday

Freshly cooked healthy meals are available each day.

For further information or to book, please visit our website www.kindergartenkids.co.uk

Alternatively, call head office on **01227 772200**



yoga
Tuesday
Thursday

Hatha Yoga with Linda Thomson

10-11.30am

10-11.30am A space during the busy and often stressful week for you to stretch in classical yoga postures. For all levels, beginners welcome.

Contact: 07516 494300 yogajoyful@gmail.com

yoga
Thursday

Yoga Flow with Monica Marini

6.30-7.45pm Come and enjoy a flow-style class that incorporates traditional and contemporary Yoga postures in fluid progression. Focus the mind, cultivate strength, and increase flexibility. This is an open-level class.

Contact: 01227 273147 07913 887108 momoiah@yahoo.com

yoga
Saturday

Yoga Drop-in with Bernadette Fisher

11.45am-12.45pm Classical Hatha Yoga Visitors and new students always welcome - call if you'd like me to bring a mat. Contact: As above.

Quarter page
£45 for 3 months

Full page
£165 for 3 months

advertise here

Half page
£90 for 3 months



spacemaker
architects

Want to improve your existing space?

Book a one hour no obligation consultation with us for your £40 donation to the Horsebridge Centre.

You'll have some new ideas and the Horsebridge will be £40 better off.

Tweet us @spacemakerarch or call Adam or Louisa on 01227 277831.

www.spacemakerarchitects.co.uk

THE LINDLEY PLAYERS

Which is the hostess
with the mostest?



Hilarious 1960's comedy

Boeing Boeing

A farce by Marc Camoletti

23 May to 27 May 2017 at 7.45pm

Book on-line www.playhousewhitstable.co.uk
Box office 01227 272042 Mon-Sat 10-12
Restricted wheelchair access. Licensed bar
Charity number 234288



classes for kids

Music and activities for parents and children to enjoy

dance
Monday

Little Cygnets Tap Class with Tamsin Over

3.50pm-4.35pm 5-10 years Children's beginner tap class. A fun, happy, tapping class aimed at enjoying noisy feet and dancing bodies. Free style and Primary/Grade 1 syllabus work. Contact: 07971 052501 tamsinovercygnets@hotmail.co.uk

drama
Tuesday

Perform Workshops

4-5pm and 5-6pm 4-7 years
A unique mix of drama, dance and singing - specifically developed to bring out every child's true potential. Booking essential. Contact: 020 7255 9120 enquiries@perform.org.uk www.perform.org.uk

drama
Wednesday
Wednesday

Playtime Theatre with Sara Kettlewell

4-5pm 7-11 years
5-6.15pm 11-18 years
Fun drama workshops run by one of the South East's leading children's theatres. Term-time only. Contact: 01227 266272 07758 729129 playtime@dircon.co.uk www.playtimetheatre.co.uk

languages

La Jolie Ronde French for Children with Vicki Sullivan

Weds, Thurs after school classes primary school age
Friday 9.30-10am 0-4 years
Saturday from 9.45am primary school age

The fun way to learn French with action songs, rhymes, role-play and stories. FREE trial session for all new families. Contact: 01227 779126 07889 495577 lajolierondevicki@gmail.com www.lajolieronde.co.uk

room hire

The Horsebridge is not an ordinary space for hire, break out facilities include the welcoming cafe with its balcony for some reviving sea air and the opportunity to wander around the galleries that occupy our ground floor. Or take a break out on the beach just outside our door.

classes • meetings • children's parties
baby groups • screenings • conferences
wine tastings • coffee mornings • clubs

Room Name	Hourly Rate	Daily Rate	Sea View	Air Conditioning	Room Dimensions	Floor Area	Theatre Seating Capacity	Boardroom Seating Capacity	Standing Capacity
The Hub	£15.00	£90.00	No	Yes	6.3x7.9m	49m ²	40	24	45
Workshop 4	£12.00	£60.00	No	No	3.5x7.9m	27m ²	20	16	30
Workshop 3	£12.00	£60.00	Yes	No	3.5x6m	21m ²	16	8	20
Workshop 5	£12.00	£60.00	Yes	No	3.5x6m	21m ²	16	8	20
Performance Space Monday-Friday Saturday & Sunday*	£17.50 £25.00	-	No	Yes	9.5x12m	114m ²	150	50	240

*9am to 6pm only

Phone **01227 281174** or email **info@thehorsebridge.org.uk**

music
Monday

Hey Diddle Music with Anita Memmott

9.20am-10.05am 18 months-3 years Term-time, booking required
10.15am-11am 0-18 months Term-time, drop in.
11.15am-12 noon 3-4 years Term-time, booking required.
Contact: 07710 575390 nitamemmott@gmail.com

music
Tuesday

Musical Bumps Mixed Age with Kirsty Ottaway

9.45am 2 years +
10.45am 1 year + High quality music classes for babies to pre-school children. If you are looking for a class for babies under 1 year please get in touch. Contact: 0845 0943786 07934 921072
canterbury.faversham@musicalbumps.com www.musicalbumps.com

music
Wednesday

Baby Moonbeams & Little Music Stars with Lucy Weston

10-10.40am 3 months to walking
10.50-11.30am Walking - 3 years Pre-school music classes.
Contact: 07946 193733 whitstable@littlemusicstars.net
www.littlemusicstars.net

music
Friday

Little Music Stars & Baby Moonbeams with Claire Winsper

10-10.40am Walking - 3 years
10.50-11.30am 3 months to walking Pre-school music classes.
Contact: 07946 193733 whitstable@littlemusicstars.net
www.littlemusicstars.net

theatre
Saturday
Sunday

Musical Theatre Performance Club

2-4pm 7-12 years - Afternoon T Club
10.15-12.15pm 13-18 years The Breakfast Club
Two performance based musical theatre clubs, set up by an experienced musical theatre director. Contact: andrew.breakfastclub@hotmail.com or andrew.afternoont@hotmail.com

have you made **friends** with us yet?

The Horsebridge Centre extends a warm welcome to more than 100,000 visitors annually.

It is open seven days a week, closing only over Christmas/New Year, and provides class space for tutors, meeting rooms for the community, and a cafe **as well as** a rolling programme of art exhibitions in two galleries **and** a dynamic schedule of music, comedy and film.

We receive very little public funding, so have to be largely self-financing through ticket sales, room hire and merchandise. It is our dearest wish to one day create surplus funds to allow us to improve the centre for our community.

If you value the Horsebridge, would you consider becoming our Friend? For £20 a year (£30 for joint membership and there are concessions too) we offer discounts in our on-site shop and our fantastic cafe.

Please talk to our reception staff about the Friends scheme or sign up on our website www.horsebridge-centre.org.uk. THANK YOU!

horsebridge cafe

The Horsebridge Cafe is open 7 days a week serving hot and cold drinks, **delicious cakes**, light bites and **lunches**, to eat in or take-away.

For **younger visitors** we have a selection of snacks, sandwiches and drinks which can be enjoyed in our **Kids Corner**.

Free **Wifi**.

Horsebridge
friends receive **15% discount**.

Profits from the cafe go to the Horsebridge, helping **secure the future** of the centre.

Opening Hours



The Horsebridge Centre

Mondays to Saturdays 9am - 6pm
(Later for classes and events)

Sundays 10am - 5pm

The Horsebridge Cafe

Mondays to Saturdays 9am - 4.30pm
Sunday 10am - 4pm

Bar open during evening events

The Horsebridge Centre is a charity
Charity number: 1099570



thehorsebridge



@horsebridge



thehorsebridge

info@thehorsebridge.org.uk

www.horsebridge-centre.org.uk

11 Horsebridge Road, Whitstable, Kent, CT5 1AF

01227 281174