

# WHAT'S ON

July - September 2016



cinema + comedy + music + workshops + classes + kids + galleries + shop + cafe

THE HORSEBRIDGE WHITSTABLE



*Copperfields*  
OF WHITSTABLE

*Cookshop & Gifts Since 1956*

*BIG IDEAS IN OUR NEW BIGGER STORE*

*See our new extensive ranges for your kitchen and home*



Cookware • Homeware • Gifts • Bakeware • Furniture • Electrical • Cards

[shop@copperfieldsofwhitstable.co.uk](mailto:shop@copperfieldsofwhitstable.co.uk) • [www.copperfieldsofwhitstable.co.uk](http://www.copperfieldsofwhitstable.co.uk)

Open 7 days a week • 93-95 High St • Whitstable • Kent • CT5 1AY • Tel: 01227 273519

# THE HORSEBRIDGE WHITSTABLE

supported by



**July - September 2016**

## contents

	Page
Events .....	6
Galleries .....	14
What's on calendar .....	24
Oyster Festival Activities for children and families .....	27
for adults .....	31
Classes for Adults .....	32
Room Hire .....	34
Classes for Children .....	41
Friends .....	45
Cafe .....	47

### Cover Image

Sam Bailey : Mermaids in Brine  
[sambaileycreations.co.uk](http://sambaileycreations.co.uk)



# betty loves bryan

Two floors of contemporary art, homeware and clothes

And THE place to buy Breton stripes!

108 High Street, Whitstable, Kent CT5 1AZ

01227 271001 / 07788 910115

bettylovesbryan@btconnect.com • www.bettylovesbryan.com



Follow us on Twitter  
@lizziedesign



Like us on  
Facebook



Follow us on Instagram  
@betty\_loves\_bryan

# welcome

Hooray for summer in Whitstable!

We start the season with drama from a new group, **Kent Coast Theatre**, who rehearse weekly in the Centre. Their debut production here is a dramatisation of Orwell's classic story, **Animal Farm**, staged on 8 and 9 July.

During **Whitstable Oyster Festival** week we are running **workshops** from Monday 25 July for children and adults, covering music and seaside crafts (please book in advance as places are limited). Our enormously popular **A1 open art show** will be on at this time, and **Anarchist Cook George Egg** will add some spice to the festival mix on 23 July.

The new **Star Wars** film to be shown on 17 August will surely have a magnetic Force for families!

Do browse our **classes** as there are a few new interesting additions.

# events

## Kent Coast Theatre presents **Animal Farm**

Friday 8 July 8:00 PM

Saturday 9 July 5:00 PM

Saturday 9 July 8:00 PM

drama

tickets £10 conc £8



When the downtrodden animals of Manor Farm overthrow their master Mr Jones and take over the farm themselves, they imagine it's the beginning of a life of freedom and equality.

But gradually a cunning, ruthless élite among them, masterminded by the pigs Napoleon and Snowball, start to take control.

Soon the other animals discover that they are not all as equal as they thought and find themselves hopelessly ensnared, as one form of tyranny is replaced with another ...

First published in 1945, 'Animal Farm' is said to reflect events leading up to the Russian Revolution of 1917 and then on into the Stalinist era of the Soviet Union.

Staging their inaugural production here at The Horsebridge, Kent Coast Theatre presents Sir Peter Hall's adaptation of George Orwell's simple, tragic fable, that has since become a world-famous classic.

## Eddie the Eagle

Thursday 14 July 2:00 PM

film

tickets £5 earlybird £4



**Horsebridge Matinee** Based on the true story of Michael 'Eddie' Edwards, the film charts the ups and downs of an unlikely but courageous British ski-jumper who made an improbable showing at the 1988 Calgary Olympics. 146 mins. Cert PG.

**For earlybird discount book before 7 July.  
Free tea or coffee and biscuit.**

## Comic Club

Thursday 14 July, 15 September 7-9pm

club

£4 to join, £2 thereafter



A great monthly club for lovers of comics and graphic novels — a heady mix of industry professionals and fans of the artform.

Have a beer and read great, inspiring, new or vintage graphic fiction.

18+.



Local fish from  
**Whitstable Harbour**

Classic **French** Cuisine

Opening Times:

**Lunch:**

Wed - Sun 12.00/2.30

**Evenings:**

Wed - Mon 6.00/9.30

41 Harbour Street  
Whitstable, Kent CT5 1AH  
For reservations telephone:  
**01227 265337**

**french...**  
**inspired  
interiors**

furniture...textiles...  
upholstery...gifts...  
re-upholstery...  
curtains&blinds...  
wallpaper & paint...  
clothing...lighting...

**plus interesting  
finds from France!**

Oxford Street, Whitstable  
**01227 634138**

shop@frenchwhitstable.co.uk

www.frenchwhitstable.co.uk

@french\_whit

frenchinteriors.whitstable

frenchinteriors.whitstable

## George Egg: Anarchist Cook

Saturday 23 July 8:00 PM doors/bar 7:00 PM

comedy

tickets £10 conc £8



Comedian George Egg is a fanatical self-taught cook with an anarchic approach. Dissatisfied with take-aways and room service while touring, he cooks up a storm with whatever is to hand. Surreal and absurd stand-up comedy!

## Star Wars:Episode VII

The Force Awakens

Wednesday 17 August 3:30 PM

film

tickets £5 earlybird £4



Thirty years after the defeat of the Galactic Empire and Darth Vader, the First Order attempts to rule the galaxy and a battle ensues. Luke Skywalker, Chewbacca, Han Solo and Princess Leia return. 136mins. Cert 12A.

**For earlybird discount book before 4 August.**

**Bring a parent for free.**

book events by phone **01227 281174** or online [horsebridge-centre.org.uk/tickets](http://horsebridge-centre.org.uk/tickets)

# The Curtain House



QUALITY HAND-MADE CURTAINS & ROMAN BLINDS

BY NICOL WARNOCK

07521 294986 01227 278507  
www.thecurtainhousekent.co.uk

## CELLO AND PIANO TUITION

Stephanie Brunton MAed

Experienced teacher  
welcomes new pupils.  
Adults and children  
from beginners to  
advanced levels.



01227-272206  
stephaniebrunton@mac.com

# ART CLASSES EVE MERKADO M.A.

Old Master Techniques for Modern Times  
Year-round Art Classes, beginners to advanced welcome, studio located  
in East Street, Herne Bay

Small numbers ensure individual attention  
Qualified, experienced tutor • Learn in a friendly supportive atmosphere

**Oils • Acrylics • Water-colours • Egg Tempera • Gold-leaf**

Pay as you go, £20 per two-and-a-half hour lesson

**PROGRESS GUARANTEED!**

Tel: 01227 363502 • Mobile: 07702 968750  
www.evemerkado.com • E: evemerkado@gmail.com



## Viva Neil Diamond

Saturday 3 September 7:30 PM doors/bar 7:00 PM

music

tickets £15



In 1966 Neil Diamond's first hit smashed into the music charts. To celebrate this 50-year recording career Bob Drury ('The Neil Diamond Story') presents a new one-man show bursting with Diamond gems including Sweet Caroline, Forever In Blue Jeans, Love on the Rocks, America, Hello Again, Play Me.

## Florence Foster Jenkins

Thursday 15 September 2:00 PM

film

tickets £5 earlybird £4



**Horsebridge Matinee** A New York heiress dreams of becoming an opera singer - a dream she follows to Carnegie Hall. The only problem is, she just can't hit the right notes. Meryl Streep plays Jenkins, while Hugh Grant is her supportive husband and manager. 110 mins. Cert PG.

**For earlybird discount book before 1 September.**

**Free tea or coffee and biscuit.**

# MERIDIAN

## Meridian are inline with all your Mortgage Needs

We recommend from the whole of the market and offer a FREE no obligation initial consultation



- Mortgages
- Remortgages
- Buy to Let Mortgages
- Bridging Loans / Fast Finance
- Secured Loans
- Home Insurance
- Life Assurance
- Critical Illness
- Income Protection

### Meridian Consultants

50 - 52 Oxford Street, Whitstable, Kent CT5 1DG

Call us today on **01227 26 66 88**

[info@meridian-mortgages.co.uk](mailto:info@meridian-mortgages.co.uk)

YOUR HOME MAY BE REPOSSESSED IF YOU DO NOT KEEP UP REPAYMENTS ON YOUR MORTGAGE.

Meridian is a trading style of Rosemount Financial Solutions Ltd who are an appointed representative of Intrinsic Financial Planning Limited (Registered in England 5372217) and Intrinsic Mortgage Planning Limited, which are authorised and regulated by the Financial Conduct Authority. Intrinsic Financial Planning Ltd and Intrinsic Mortgage Planning Limited are entered on the FCA register under reference 440703 and 440718.

## Let's Imagine... An event towards Peace

Saturday 17 September 7:00 PM

community

free



To coincide with **World Peace Day** providing selections from Literature, Music and Imagery that highlight a deeper way of thinking about Peace in our world in our time.

With the help of volunteers within our community we aim to move away from the destructive and desolate nature of war, towards the challenge and complexity of striving for Peace & Hope.

Donations on the evening to the Mustard Seed Singers Charity.

Please book through the Horsebridge.

## Hail, Caesar!

Friday 23 September 7:00 PM

film

tickets £5 earlybird £4



The film starring George Clooney, Scarlett Johansson, Tilda Swinton and Ralph Fiennes follows a day in the life of a Hollywood 'fixer' for Capitol Pictures in the 1950s. The studio's biggest star has disappeared, and may have been kidnapped. 106 mins. Cert 12A.

**For earlybird discount book before 9 September.**

# galleries

## Somerset Maugham & Gallery 2

Our galleries are free to visit, with a wide range of exhibitions changing frequently. Artists, individually or in groups, can hire the galleries for up to 2 weeks on a non-commission basis.

For information about hiring our galleries contact:  
[info@thehorsebridge.org.uk](mailto:info@thehorsebridge.org.uk)



### MARGO SELBY

*Woven textiles*

*Open Studio & Sample Sale*  
*Fri 22nd – Sun 31st July 10am-5pm*  
*Thurs 21st July 6pm-9pm*  
*(Drinks evening)*  
*All visitors welcome*

*Bradstowe House | 35 Middle Wall*  
*Whitstable, Kent CT5 1BJ*  
*01227282758*  
*[info@margoselby.com](mailto:info@margoselby.com)*  
*[www.margoselby.com](http://www.margoselby.com)*

somerset maugham

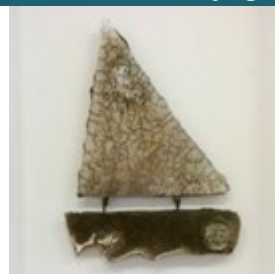
7 - 19 july

## Oh, I Do Like To Be ...

Locus Arts

Members of the Locus Arts group respond to the title in paint, print, drawing, ceramics and sculpture.

[www.facebook.com/locus.arts.9](http://www.facebook.com/locus.arts.9)



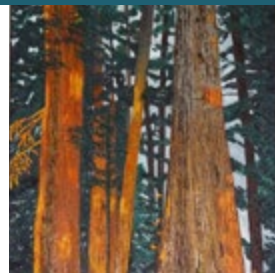
gallery 2

6 - 12 july

## After Darkness Becomes Light!

Charlie Veniga-Garrett

With laughter and tears my life's journey through death and depression. Expressed in Glass and Oil Paintings. These works show life, colour, joy and happiness.



gallery 2

13 - 29 july

## Tracing my Footsteps

Ruth McDonald

Screen-prints, drawings and gesso panels by Ruth McDonald painter/printmaker. She records local woodland landscapes and the sea illuminated by failing light, the moon and the traces left by past inhabitants.

[www.ruthmcdonald.co](http://www.ruthmcdonald.co)



# Bridge House Arts



**Art Classes**  
for Adults and Children

**Sculpture Classes**

**Art Parties**  
for Children and Adults

**Art Holidays**  
in the Canaries and Channel Islands

**Gallery/Studio Space for Hire**



1 Canterbury Road, Whitstable, Kent CT5 4HU  
Tel: 07771 763661

E: [bridgehousearts@hotmail.co.uk](mailto:bridgehousearts@hotmail.co.uk)  
[www.bridgehousearts.co.uk](http://www.bridgehousearts.co.uk)

## HQ HeadQuarters

offers all hair  
services for  
**Men  
Women &  
Children**

the salon also  
provides a  
Make-up and  
beauty room  
and  
coffee shop!



133 Tankerton Road, Tankerton CT5 2AW

**01227 637678**

[www.hqtankerton.com](http://www.hqtankerton.com)

somerset maugham + gallery 2

22 july - 7 august

### A1 Open Exhibition

Rich talent from the local area

We are filling both of our ground floor galleries with A1 artworks making the galleries a must-visit destination during the Summer.

This will be an exhibition that brings together a breadth of mediums and styles, a great showcase of the rich talent within the local area. Whether you submit photographs, oil paintings, etchings, screen prints, drawings, textile work, glass or graffiti work they sit alongside each other perfectly in the A1.

We welcome thousands of visitors to the town and the centre during this time. It is a great opportunity to exhibit, at the time when every artist wants to gain wall space.

Make your art an essential part of the Summer experience.

Take part in A1 Open.

[info@thehorsebridge.org.uk](mailto:info@thehorsebridge.org.uk)

# A1 Open Exhibition 2016

Horsebridge Galleries  
22 July - 7 August

An exhibition of A1 sized artworks

A popular showcase of local artist's work  
displayed at our busiest time of the year

The biggest show in town!

[www.horsebridge-centre.org.uk](http://www.horsebridge-centre.org.uk)



**Fishslab  
Gallery**  
11 Oxford Street  
Whitstable

 Fishslab Art Gallery  
 @fishslab

Art Gallery  
[www.fishslabgallery.co.uk](http://www.fishslabgallery.co.uk)

**samson & coles**  
ltd  
Modern British Jewellery Gallery



**Bespoke Design   Commissions   Repairs**  
13 Oxford St, Whitstable, CT5 1DB   01227 277985  
Opening hours: Tues - Sat 10.30am - 5.00pm

**Integrative Body Psychotherapy**



**Energy Work  
Breath Work**

[ruthhoskinsukcp@gmail.com](mailto:ruthhoskinsukcp@gmail.com)  
[www.body-psychotherapy.org.uk](http://www.body-psychotherapy.org.uk)  
[www.counselling-directory.org.uk](http://www.counselling-directory.org.uk)  
**Ruth Hoskins MA UKCP 07742 295506**

somerset maugham

10 - 16 august

## Trois Artistes

Tipp, Colette & Mullett

Flexible, dynamic and enthralling, an exhibition not to be missed "Trois Artistes" Tipp, Colette & Mullett three very diverse painters. Each one looking for meaning in their Art: beliefs and practices in a variety of expressions in nature, movement and time.



gallery 2

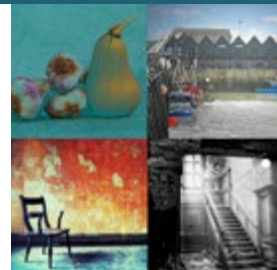
10 - 16 august

## Beyond Boundaries

Edyta Kuciel & Phillip Ling

Art born of the 'Extreme Editing' of the basic photograph. From Hard Disc to Hard Copy, work that flows seamlessly from photograph through digital image to digital art exploring where, if anywhere, the 'boundaries' lie.

[http://www.flickr.com/photos/edyta\\_kuciel](http://www.flickr.com/photos/edyta_kuciel)   <http://www.flickr.com/photos/pling8491>



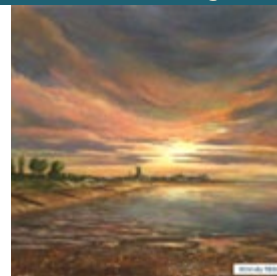
somerset maugham

17 - 23 august

## Group IV

Wendy Mills, Barbara Drinkwater, Tisha Tilston, Jane Jenkins

4 Artists working together to exhibit their recent work.



# Chappell CONTEMPORARY

## ART GALLERY

30 Oxford Street, Whitstable, CT5 1DD

+44 (0) 1227637329

[www.chappellcontemporary.com](http://www.chappellcontemporary.com) | [mail@chappellcontemporary.com](mailto:mail@chappellcontemporary.com)



gallery 2

17 - 23 august

### [ inside the box ]

Nick Eldridge

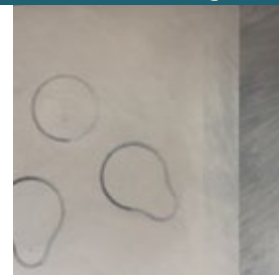
Architect & printmaker Nick Eldridge exhibits

Drawings Paintings Prints

[ inside the box ]

An edited view of the natural and man-made world

[www.eldridgelondon.com](http://www.eldridgelondon.com)



somerset maugham + gallery 2

24 - 30 august

### SKIN

Pandora's Other Box

A diverse multi-media exhibition of women artists responding to the theme of SKIN, curated by Tracie Peisley and selected by David Lilford, Dawn Giles and Paula Chappell.

[www.traciepeisley.com](http://www.traciepeisley.com)



somerset maugham

31 august - 6 september

### Semblance

Phill Hosking, Phil Gomm, Phil Cooper

Returning to the gallery with new work spanning various media including painting, sculpture, photography and print. Working in different styles and with different approaches, their work does, however, reflect spectral traces of common ground, a semblance of mutual imagining.



gallery 2

31 august - 13 september

## C A Grant

An exhibition of paintings by C A Grant.

[www.cariegrant.co.uk](http://www.cariegrant.co.uk)



somerset maugham

14 - 20 september

## Passing Time

Diane Smalley, Rose O'Brian West, Iz Skinner, Lisa Potter, Jennifer Wright, Brendon Treeby, Krystyna Lowicz, Sharon Van Diepen, Joan Hobson and Carey Still

Access 10 are a group of talented contemporary artists working in a variety of different styles and medias, producing exciting, sensitive and thought provoking works through their interpretation of the theme 'Passing Time'.



gallery 2

14 - 20 september

## Stablegate Gallery

Gaye Guitini

My show will consist of bright and colourful paintings which will compliment most of today's homes. I am influenced by childhood memories of beach huts - days by the sea - visits to funfairs and sunny times. All paintings will be for sale and I am happy to take commissions.



somerset maugham

21 - 27 september

## Two of Us

Colin Whitaker & Stephanie Brunton

Two of us sending postcards, writing letters on our way back home.

You and I have memories longer than the road that stretches out ahead.



somerset maugham

28 september - 4 october

## Assembly Group

Theme : Portraits

A group show, showing art about things. Theme : Portraits.



gallery 2

28 september - 11 october

## Sea Journal

Lisa Woollett

In this exhibition based on Lisa's new book, Sea Journal, she brings together photographs, finds and curiosities from a year's wanderings along Britain's shores and links them with natural history, geology and evolution, ancient myth and current science. To accompany the exhibition Lisa will give an illustrated talk on 8 October.

[www.zartbooks.co.uk](http://www.zartbooks.co.uk)



# what's on calendar

## July

Wednesday 6	gallery	Charlie Veniga-Garrett	After Darkness Becomes Light!	to July 13	p15
Thursday 7	gallery	Locus Arts	Oh, I Do Like To Be ...	to July 19	p15
Friday 8	drama	Kent Coast Theatre presents Animal Farm		8pm	p6
Saturday 9	drama	Kent Coast Theatre presents Animal Farm		5pm	p6
Saturday 9	drama	Kent Coast Theatre presents Animal Farm		8pm	p6
Wednesday 13	gallery	Ruth McDonald	Tracing my Footsteps	to July 19	p15
Thursday 14	film	Horsebridge Matinee: Eddie the Eagle		2pm	p7
Thursday 14	club	Comic Club		7-9pm	p7
Friday 22	gallery	A1 Open Exhibition		to August 7	p17
Saturday 23	comedy	George Egg: Anarchist Cook		8pm	p13
Monday 25	workshop	Hey Diddle Music Fun		10:30-11:15am	p27
Monday 25	workshop	Shell Grotto		10:30-11:30am	p29
Monday 25	workshop	Shell Grotto		12-1pm	p29
Monday 25	workshop	Framed plaster cast art tile (session 1)		2-4.30pm	p31
Tuesday 26	workshop	Djembe Jam		10-11.30am	p27
Tuesday 26	workshop	Driftwood fish mobile		10:30-11:30am	p29
Tuesday 26	workshop	Driftwood fish mobile		12-1pm	p29
Tuesday 26	workshop	Framed plaster cast art tile (session 2)		2-4.30pm	p31
Wednesday 27	workshop	Djembe Jam		10-11.30am	p27
Wednesday 27	workshop	Pebble creatures		10:30-11:30am	p29
Wednesday 27	workshop	Pebble creatures		12-1pm	p29
Thursday 28	workshop	Seaside rock pool collage		12-1pm	p29
Thursday 28	workshop	Sea glass, wire & driftwood jewellery workshop		2-4.30pm	p31
Friday 29	workshop	Seaside rock pool collage		10:30-11:30am	p29
Friday 29	workshop	Wire & bead sculpture drawing		2-4.30pm	p31

## August

Wednesday 10	gallery	Tipp, Colette & Mullett	Trois Artistes	to August 16	p19
Wednesday 10	gallery	Edyta Kuciel & Phillip Ling	Beyond Boundaries	to August 16	p19
Wednesday 17	gallery	Wendy Mills, Barbara Drinkwater, Tisha Tilston, Jane Jenkins	Group IV	to August 23	p19
Wednesday 17	gallery	Nick Eldridge	[ inside the box ]	to August 23	p21
Wednesday 17	film	Star Wars Episode VII : The Force Awakens		3.30pm	p9
Wednesday 24	gallery	Pandora's Other Box	SKIN	to August 30	p21
Wednesday 31	gallery	Phill Hosking, Phil Gomm, Phil Cooper	Semblance	to September 6	p21
Wednesday 31	gallery	C A Grant		to September 13	p22

## September

Saturday 3	music	Viva Neil Diamond		7.30pm	p11
Wednesday 14	gallery	Access 10	Passing Time	to September 20	p22
Wednesday 14	gallery	Gaye Guitini	Stablegate Gallery	to September 20	p22
Thursday 15	film	Horsebridge Matinee: Florence Foster Jenkins		2pm	p11
Thursday 15	club	Comic Club		7-9pm	p7
Saturday 17	community	Let's Imagine : An event towards Peace		7pm	p13
Wednesday 21	gallery	Colin Whitaker & Stephanie Brunton	Two of Us	to September 27	p23
Friday 23	film	Hail, Ceasar!		7pm	p13
Wednesday 28	gallery	Lisa Woollett	Sea Journal	to October 11	p23
Wednesday 28	gallery	Assembly Group	Theme : Portraits	to October 4	p23

plus a huge range of adult and children's classes every day, details from page 32



## Take control of your life!

**Tailor made therapy solutions** to help you to get to the **root cause** of your emotional or psychological distress to resolve it.

Anxiety, anger management, stopping smoking, relationship difficulties, weight management, phobias, amongst many others can be addressed with this **calm, relaxing and transformational therapy**.

Contact Artemis Hypnotherapy for a one to one consultation to release, rebalance and resolve your issues.

**ARTEMIS**  
HYPNOTHERAPY

info@artemishypnotherapy.com

www.artemishypnotherapy.com Ann Hamilton: 07510222827



## Ladies clothing and accessory boutique

Victoria also specialises in selling pre-loved designer handbags and accessories on consignment.

70B High Street, Whitstable CT5 1BB

01227 264115 • www.victoriasofwhitstable.com

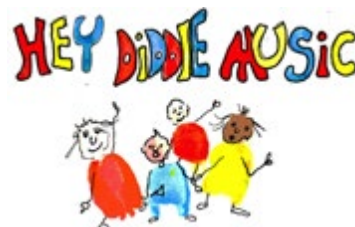
# oyster festival workshops

music

## Hey Diddle Music Fun

Monday 25 July 10:30 to 11:15 AM

tickets £5



Hey Diddle Music Fun, based on a sea theme for **under 5s and their families**.

Singing, moving, puppets and lots of instruments.

**Booking essential**

music

## Djembe Jam

Tuesday 26 July 10:00 to 11:30 AM

Wednesday 27 July 10:00 to 11:30 AM

tickets £5

Djembe Jam



Djembe Jam leads a session for families with rhythms and songs from around the world. Djembe drums and percussion provided.

**Recommended for 7 years old and up.**

**Booking essential**

Liz McGown Louise Whorlow

## CHIROPRACTORS

- Relieve Pain and Improve Function and Performance
- Back and Neck Pain, Headaches
- Sport Injuries, Joint Pain and Muscle Aches
- All Ages Welcome: Children, Teenagers, Adults and Elderly

EVOLUTION HEALTH 01227 273821  
62 Borstal Hill  
CT5 4NA



Member of the  
British Chiropractic Association

## Seaside Children's Workshops with Sharon Cavalier

crafts



Booking required for all workshops

### Shell Grotto

Monday 25 July 10:30-11:30am and 12-1pm

5-16 years

on the day £10 advance £8

Inspired by your visit to Whitstable Beach, create a shell grotto from scallop & crab shells, a take home souvenir.

### Driftwood fish mobile

Tuesday 26 July 10:30-11:30am and 12-1pm

5-16 years

on the day £10 advance £8

If you enjoy colour and paint then this is an ideal way to release the Van Gogh in you.

### Pebble creatures

Wednesday 27 July 10:30-11:30am and 12-1pm

5-16 years

on the day £6 advance £5

Create a collection of giant pebble creatures using paint and collage materials.

### Harbour boats

Thursday 28 July 10:30-11:30am and 12-1pm

5-16 years

on the day £10 advance £8

Calling budding makers, design a boat using a collection of driftwood, flotsam & jetsam.

### Seaside rock pool collage

Friday 29 July 10:30-11:30am and 12-1pm

5-16 years

on the day £6 advance £5

Bring along some seaside treasure to add to your very own rock pool collage.

**SURMANS**  
Since 1932

TRADITIONAL BUTCHERS & DELICATESSEN

QUALITY LOCAL  
BEEF, PORK  
CHICKEN, LAMB  
BURGERS, KEBABS  
SAUSAGES

**BBQ**

HOMEMADE PIES  
LOCAL CHEESES  
COLD MEATS  
PATÉ & QUICHES

Tel: 01227 272047

152 Tankerton Road, Tankerton,  
Whitstable Kent. CT5 2AW

# The Painted Pearl

Vintage Modern Living

[www.thepaintedpearl.co.uk](http://www.thepaintedpearl.co.uk)

Paint • Wallpaper • Furniture • Workshops



Little Greene

115 Tankerton Road, Whitstable, Kent CT5 2AN 07734 721227



**WE  
LOVE  
SELLING & LETTING  
PROPERTIES**

**Call 01227 770717**

Pay us a visit at:  
98 High Street, Whitstable, Kent CT5 1AZ  
or Email us: [whitstable@reedsrains.co.uk](mailto:whitstable@reedsrains.co.uk)



Reeds Rains

The Estate Agents

[www.reedsrains.co.uk](http://www.reedsrains.co.uk)

## Adult Craft Workshops with Sharon Cavalier

crafts



Booking required for all workshops

### Framed plaster cast art tile (session 1)

Monday 25 July 2-4:30pm

16 years +

on the day £18 advance £15

Framed cast beach finds in clay, producing a three-dimensional memory of your visit to Whitstable. Bring along any objects if you would like them included.

### Framed plaster cast art tile (session 2)

Tuesday 26 July 2-4:30pm

16 years +

on the day £6 advance £5

Follow-up next day, sealing and acrylic painting plaster cast, and decorating the frame.

### Sea Glass, wire & driftwood jewellery workshop

Thursday 28 July 2-4:30pm

16 years +

on the day £20 advance £18

Capture the beauty of sea-worn glass incorporating wire and driftwood in your designs. Organza gift bags provided. **Contact if under 16.**

### Wire & bead sculpture drawing

Friday 29 July 2-4:30pm

16 years +

on the day £15 advance £12

A garden sculpture based on a sturdy wire outline inspired by nature; thread glass beads on a variety of finer wires adding sparkle and detail to your sculpture.

# classes for adults

**art**  
**Tuesday** **Tuesday Art Group** with Cathy McTurk  
3-5pm Step-by-step exercises show you how to build your skills and create drawings you're proud of. All abilities welcome.  
Contact: 01227 264645 cathy@postlane.net www.catherinemcturk.co.uk

**art**  
**Wednesday** **Pottery** with Carol Foster  
2.30-4.30pm 29 June - 27 July 5 week course for £75. Beginners welcome plus opportunities for experienced makers to develop their skills.  
**Wednesday** evening class 6.30-8.30pm 5 week course for £75. All abilities welcome. Courses resume 21 September after summer break  
Contact: 01227 272144 carola.foster8@gmail.com

**art**  
**Thursday** **Artclub for Adults** with Tobi Deeson  
7.30-9pm Starts 29 Sept. This Artclub will focus on 2d & 3d materials and processes. Explore Print, inks, stamping clay and more!  
Contact: 07970 495703 tcdeeson@gmail.com

**art**  
**Sunday** **Life Drawing** with Ron Freeman  
2-4pm Alternate Sundays, twice a month. If you would like to join these informal sessions, please speak to Ron.  
Contact: 07749 835036 mail@ronfreeman.co.uk

**birthing**  
**Saturday &/or Sunday** **ZenBirth Hypnobirthing Antenatal Classes** with Gina Potts PhD  
10am-4pm once a month A complete antenatal education programme with a difference. Includes breathing, relaxation and self-hypnosis techniques.  
Contact: 07946 390439 gina@zenbirth.co.uk Book: www.zenbirth.co.uk

**craft**  
**Wednesday** **Bead 'n Banter** with Jayne Johnson  
6-9pm First Wednesday of the month. Bring beadwork and exchange tips, with monthly raffle and quarterly challenges. Contact: 01227 265293 gillgoldfinch@btinternet.com www.rainbowcollection.co.uk

**dance**  
**Friday** **Adult Tap Dance** with Rosita Yarboy  
11am-12 noon Run by Reach Performing Arts. Contact: 01227 369891 reachacademy@sky.com www.reachperformance.co.uk

**dance**  
**Friday** **Ballet & Contemporary Dance** with Rosita Yarboy  
10-11am For adults, run by Reach Performing Arts. Contact: 01227 369891 reachacademy@sky.com www.reachperformance.co.uk

**dance**  
**Saturday** **Just Jhoom!** with Jasmin deSylva-Smith  
10.30-11.30am Total mind and body workout with beautiful Indian dance hands, and props to keep things interesting. Have some 'me time'!  
Contact: 07761 199179 jasmin@my-energise.co.uk

**drama**  
**Monday** **Kent Coast Theatre Group** with Alison Mead  
7-9pm from 26 Sept. Non-profit community theatre company. Acting workshop for 10 weeks with KCT Artistic Director. Open to adults 18+.  
Contact: 01227 280314 info.kentcoasttheatre@talktalk.net www.kentcoasttheatre.co.uk

**fitness**  
**Monday** **Boxercise** with Graham Bedford  
7-8pm For men and women. Graham Bedford has been teaching Boxercise for five years and is a qualified personal trainer.  
Contact: 01795 590118 grahambedford@btinternet.com

# room hire

Room Name	Hourly Rate	Daily Rate	Sea View	Air Conditioning	Room Dimensions	Floor Area	Theatre Seating Capacity	Boardroom Seating Capacity	Standing Capacity
The Hub	£15.00	£90.00	No	Yes	6.3x7.9m	49m <sup>2</sup>	40	24	45
Workshop 4	£12.00	£60.00	No	No	3.5x7.9m	27m <sup>2</sup>	20	16	30
Workshop 3	£12.00	£60.00	Yes	No	3.5x6m	21m <sup>2</sup>	16	8	20
Workshop 5	£12.00	£60.00	Yes	No	3.5x6m	21m <sup>2</sup>	16	8	20
Performance Space Monday-Friday Saturday & Sunday*	£17.50 £25.00	-	No	Yes	9.5x12m	114m <sup>2</sup>	150	50	240
*9am to 6pm only									

book one of the rooms at the horsebridge:

classes • meetings • parties • gigs • conferences  
receptions • baby groups • screenings  
wine tastings • coffee mornings • clubs

Phone **01227 281174** or email **info@thehorsebridge.org.uk**

fitness  
Monday

Zumba with Hayley Acton

8.15-9.15pm Party yourself into shape with Latin-inspired, calorie-burning, dance fitness! Beginners welcome.

Contact: 07562 037318 hayleyacton@fsmail.net

fitness  
Tuesday

Callanetics® Exercise Method with Jennifer Goddard

10.30-11.30am Strengthen core and pelvic floor muscles, improve posture, increase flexibility. Contact: 07966 731323 goddard.jennifer@gmail.com

www.callanetics-canterbury.co.uk

fitness

Get Fitter and Live Longer! with David Mannion

Wednesday

10-11am starting 7 Sept Improve fitness levels, stamina and power. Develop and tone muscles especially core muscles. Improve posture and flexibility.

Contact: 01227 634107 md.mannion@tiscali.co.uk dmfitnessstraining.co.uk

languages  
Monday

Spanish First Steps with Kent Adult Education

12.30-2.30pm Beginners

Contact: 03000 412222

www.kentadulthoodeducation.co.uk

languages  
Monday

Spanish Intermediate with Kent Adult Education

10am-12 noon Contact: 03000 412222

www.kentadulthoodeducation.co.uk

languages  
Monday

Spanish Intermediate Plus with Kent Adult Education

7-9pm Contact: 03000 412222

www.kentadulthoodeducation.co.uk

languages  
Thursday

French Intermediate with Kent Adult Education

11.30am-12.30pm

Contact: 03000 412222

www.kentadulthoodeducation.co.uk

# PLAYHOUSE THEATRE WHITSTABLE

## 'ALLO 'ALLO

Tuesday 12 - Saturday 16 July

Based on the hugely successful British television series - this uproarious comedy relates the adventures of a hapless café owner, René, in occupied France.

*Listen very carefully, I will say this only once' - you will revel in the latest stage production of the TV cult comedy classic 'Allo 'Allo! You won't be able to help yourselves. THE STAGE*

## LONESTAR AND LAUNDRY & BOURBON

Wednesday 21 - Saturday 24 September

**Lone Star** - Roy regales his younger brother Ray with tales of the military and his amorous exploits.

**Laundry & Bourbon** - Roy's wife Elizabeth deals with the town gossip that he's been seen with another woman.

## COMPANY

Tuesday 25 - Saturday 29 October

Sondheim's fast, furious and very funny musical. Over the course of a series of dinners, drinks and even a wedding, the habitually single Robert is forced to question his adamant retention of bachelorhood.



Book online - [playhousewhitstable.co.uk](http://playhousewhitstable.co.uk)

Book in person or by telephone (01227) 272042 - Monday to Saturday, 10am - 12noon

Follow us online - [fb.com/Playhouse.Whitstable](https://www.facebook.com/Playhouse.Whitstable) • [twitter.com/PlayhouseWhit](https://twitter.com/PlayhouseWhit)

RESTRICTED WHEELCHAIR ACCESS • HEARING LOOP • AIR COOLED • LICENSED BAR

languages  
Thursday

French Intermediate Plus with Kent Adult Education

1-3pm Alternate weeks.

Contact: 03000 412222

[www.kentadulthoodeducation.co.uk](http://www.kentadulthoodeducation.co.uk)

maths  
Thursday

GCSE Maths with Kent Adult Education

6.30-9pm Contact: 03000 412222

[www.kentadulthoodeducation.co.uk](http://www.kentadulthoodeducation.co.uk)

pilates  
Monday

Pilates with Sharon Saker

6.50-7.45pm Pilates yoga fusion. Mixed levels. Please bring a mat.

Contact: 07970 258527 [sharonsaker@tiscali.co.uk](mailto:sharonsaker@tiscali.co.uk)

pilates  
Wednesday

Beginners Pilates with Stephanie Fancy

7.30-8.30pm Build core and muscle strength, breathing and mobility.

Contact: 07890 897851 [stephaniefancy@gmail.com](mailto:stephaniefancy@gmail.com)

pilates  
Wednesday

Intermediate Pilates with Stephanie Fancy

6.30-7.30pm Challenge strength, control and balance. Small equipment used. Contact: 07890 897851 [stephaniefancy@gmail.com](mailto:stephaniefancy@gmail.com)

singing  
Thursday

The Horsebridge Singers with Laura Gillham

6.30-8pm Acapella from across the world, from Maori folk to doo wop! Some previous experience but no sight reading required. Free taster, booking essential. Contact: 01227 277927 [lauragillham@gmail.com](mailto:lauragillham@gmail.com)

[www.lauragillhamsingingteacher.com](http://www.lauragillhamsingingteacher.com)

writing  
Monday

Memoir Writing with Marnie Summerfield Smith

7-8.30pm These classes will encourage you whether you are already writing your memoirs or want to start. Contact: 07710 721389

[marnie@yourmemoir.co.uk](mailto:marnie@yourmemoir.co.uk)

[www.yourmemoir.co.uk](http://www.yourmemoir.co.uk)

## WHITSTABLE STOVE SHOP

Whether it's Winter heating, or Summer cooking, we reckon we have it covered.



2 SADDLETON ROAD, WHITSTABLE, CT5 4JB. 01227 266209



## EVOLUTION HEALTH

- Chiropractic
- Bowen Technique
- Cognitive Behavioural Therapy
- Counselling Psychology
- Homeopathy
- Hypnotherapy
- Physiotherapy
- Reiki
- Reflexology
- Therapeutic & Sport Massage



62 Borstal Hill  
Whitstable  
CT5 4NA  
TEL: 01227-273821

## Whitstable Nutrition Centre

A friendly, independent family run health shop trading in Whitstable since 1970

81 High Street, Whitstable, Kent CT5 3DY

01227 278 550

whitnutcentre@gmail.com

@whitstablenutri

writing  
Sunday

### Creative Writing Course with a Difference with Linda M James

2-4pm 6 week writing course starting 4 September with published author and screenwriter Linda M James. Booking essential.

Contact: 01227 634107 07969 051064

writingunderwater@tiscali.co.uk

www.lindamjames.co.uk

yoga  
Monday

### Yoga Basics with Bernadette Fisher

5.45-6.45pm Classical Hatha Yoga for those new to yoga, returning, or seeking a slower class. Contact: 07739 302870 bernadetteannef@aol.com

www.bernadettefisheryoga.co.uk

yoga  
Tuesday

### Vinyasa Yoga with Monica Marini

1-2.15pm A dynamic class working deeply with the physical body. Plenty of individual attention to safely deepen your practice. First class free, booking essential. Contact: 01227 273147 07913 887108 momoiah@yahoo.com

yoga  
Tuesday

### Yoga with Emma Epton

6.30-8pm Mixed Level. Yoga Alliance UK registered teacher. Emma is also pregnancy yoga trained. Contact: 07891 454450 whitstablecommunityyoga@gmail.com

yoga  
Tuesday  
Thursday

### Hatha Yoga with Linda Thomson

10-11.30am

10-11.30am A space during the busy and often stressful week for you to stretch in classical yoga postures. For all levels, beginners welcome. Contact: 07516 494300 yogajoyful@gmail.com

yoga  
Saturday

### Yoga Drop-in with Bernadette Fisher

11.45am-12.45pm Classical Hatha Yoga Visitors and new students always welcome - call if you'd like me to bring a mat. Contact: As above.

# CGS Blinds & Shutters

SHUTTERS

♦  
VERTICAL

♦  
VENETIAN

♦  
ROLLER



PERFECT FIT

♦  
PLEATED

♦  
ROMAN

♦  
OFFICE  
OR HOME

♦ CONSERVATORY ROOFS ♦

*Come and visit our Showroom, and choose from Materials/Fabrics.*

*Expert advice with 1st Class service.*

*All blinds are custom made to your needs.*

**Supply Only Or Surveyed And Installed**

**107A Tankerton Road, Whitstable CT5 2AJ**

**01227 278643**

**www.cgsblinds.co.uk**



# classes for kids

Music and activities for parents and children to enjoy

dance  
Monday

Little Cygnets with Tamsin Over

12.15am-1.15pm and 1.15pm-2.15pm 2-4 years A class where fun is incorporated with basic ballet steps. Please contact Tamsin for classes on other days of the week.

Contact: 07971 052501 [tamsinovercygnets@hotmail.co.uk](mailto:tamsinovercygnets@hotmail.co.uk)

drama  
Tuesday

Perform Workshops

4-5pm and 5-6pm 4-7 years

A unique mix of drama, dance and singing - specifically developed to bring out every child's true potential. Booking essential.

Contact: 020 7255 9120 [enquiries@perform.org.uk](mailto:enquiries@perform.org.uk) [www.perform.org.uk](http://www.perform.org.uk)

drama

Playtime Theatre with Sara Kettlewell

Wednesday 4-5pm 7-11 years

Wednesday 5-6.15pm 11-18 years

Thursday 4-5pm 5-7 years

Fun drama workshops run by one of the South East's leading children's theatres. Term-time only. Contact: 01227 266272 07758 729129

[playtime@dircon.co.uk](mailto:playtime@dircon.co.uk)

[www.playtimetheatre.co.uk](http://www.playtimetheatre.co.uk)

## ALMA CAIRA GLASS FUSING WORKSHOPS 2016



### BEGINNERS SATURDAY WORKSHOPS

11th June, 16th July

13th August, 17th September

10am - 3pm **£50 PER SESSION**

Why not treat someone to one of my gift vouchers?  
Please contact me for further details or to make a booking.

[www.almacaira.co.uk](http://www.almacaira.co.uk) [alma@almacaira.co.uk](mailto:alma@almacaira.co.uk)

**01227 280 648 07947 842 642**

Follow me on Facebook: [AlmaCairaFusedGlass](https://www.facebook.com/AlmaCairaFusedGlass)



languages **La Jolie Ronde French for Children** with Vicki Sullivan

Weds, Thurs after school classes 3-11 years

Friday mornings 0-3 years

Saturday morning classes 3-11 years

The fun way to learn French with action songs, rhymes, role-play and stories.

FREE trial session for all new families. Contact: 01227 779126 07889 495577

[lajolierondevicki@yahoo.co.uk](mailto:lajolierondevicki@yahoo.co.uk)

[www.lajolieronde.co.uk](http://www.lajolieronde.co.uk)

music **Hey Diddle Music** with Anita Memmott

Monday

9.20am-10.05am 18 months-3 years Term-time, booking required

10.15am-11am 0-18 months Term-time, drop in.

11.15am-12 noon 3-4 years Term-time, booking required. Contact: 07710

575390 [nitamemmott@gmail.com](mailto:nitamemmott@gmail.com)

music **Musical Bumps Babies** with Kirsty Ottaway

Tuesday

11.30am-12 noon Babies under 1 year Simple songs and lullabies with

puppets and instruments. Contact: 0845 0943786 07934 921072

[canterbury.faversham@musicalbumps.com](mailto:canterbury.faversham@musicalbumps.com)

[www.musicalbumps.com](http://www.musicalbumps.com)

music **Musical Bumps Mixed Age** with Kirsty Ottaway

Tuesday

10.30-11.15am 1-3 years High quality music classes for babies to pre-school children. Contact: As above.

music **Baby Moonbeams** with Katie Verner

Wednesday

10-10.40am 3 months to walking Pre-school music programme.

Contact: 07946 193733 [info@littlemusicstars.net](mailto:info@littlemusicstars.net) [www.littlemusicstars.net](http://www.littlemusicstars.net)

music **Little Moonbeams & Little Music Stars** with Katie Verner

Wednesday

10.50-11.30am Walking - 3 years Pre-school music programme.

Contact: 07946 193733 [info@littlemusicstars.net](mailto:info@littlemusicstars.net) [www.littlemusicstars.net](http://www.littlemusicstars.net)

# Holiday Club

We provide out of school care for children ages 5 to 11 years during the school Holidays at Whitstable Junior School.

**Open 8.00 - 18.00 Monday to Friday**

Freshly cooked healthy meals are available each day.

For further information or to book, please visit our website [www.kindergartenkids.co.uk](http://www.kindergartenkids.co.uk)

Alternatively, call head office on **01227 772200**



# FILM

## THE HORSEBRIDGE WHITSTABLE



**Wednesday 17 August 3.30pm**

cert 12A

tickets **£5** earlybird **£4**

# have you made **friends** with us yet?

The Horsebridge Centre extends a warm welcome to more than 100,000 visitors annually.

It is open seven days a week, closing only over Christmas/New Year, and provides class space for tutors, meeting rooms for the community, and a café **as well as** a rolling programme of art exhibitions in two galleries **and** a dynamic schedule of music, comedy and film.

We receive very little public funding, so have to be largely self-financing through ticket sales, room hire and merchandise. It is our dearest wish to one day make a profit which we would plough back into maintenance and upgrading of our equipment.

If you value the Horsebridge, would you consider becoming our Friend? For £20 a year (£30 for joint membership and there are concessions too) we offer discounts in our on-site shop and our fantastic café run by Whitstable Produce Store (you can also benefit from this off-site at the Store's premises in Harbour Street).

Please talk to our reception staff about the Friends scheme or sign up on our website [www.horsebridge-centre.org.uk](http://www.horsebridge-centre.org.uk). THANK YOU!

# advertise here

**Quarter page**  
**£45 for three months**  
size of ad 62x62mm

**Half page**  
**£90 for three months**  
size of ad 130x62mm

**Full page**  
**£165 for three months**  
size of ad 130x130mm

Quarter  
page  
Book for 1 year  
£2.60 per week

Full page  
Book for 1 year  
£9.52 per week

Half page  
Book for 1 year  
£5.19 per week

Book for one year and only pay for nine months.

This programme has a print run of 8,000.

It is distributed to local businesses, libraries, and to the book bags of all children in nine local schools.

An advert in our programme represents excellent value for money and helps us continue to serve the local community.



## THE HORSEBRIDGE

### WHITSTABLE PRODUCE STORE AT THE HORSEBRIDGE

### Fresh food and drink from great Kent suppliers

Breakfast ♦ morning coffee ♦ lunch ♦ afternoon tea

Soup ♦ sandwiches ♦ toasties ♦ panini ♦ cakes & bakes  
juices & smoothies ♦ coffee & tea ♦ wines & beers

Open every day Mon-Sat 9am-4.30pm Sun 10am-4pm Free Wi-Fi



[www.whitstableproduce.co.uk](http://www.whitstableproduce.co.uk)

Twitter/Facebook Whitproduce

# Opening Hours



## The Horsebridge Centre

Mondays to Saturdays 9am - 6pm  
(Later for classes and events)

Sundays 10am - 5pm

## The Horsebridge Cafe

Mondays to Saturdays 9am - 4.30pm  
Sunday 10am - 4pm

Bar open during evening events

The Horsebridge Centre is a charity  
Charity number: 1099570

[www.horsebridge-centre.org.uk](http://www.horsebridge-centre.org.uk)

[info@thehorsebridge.org.uk](mailto:info@thehorsebridge.org.uk)

 [thehorsebridge](https://www.facebook.com/thehorsebridge)

 [@horsebridge](https://twitter.com/horsebridge)

11 Horsebridge Road, Whitstable, Kent, CT5 1AF

# 01227 281174