

# WHAT'S ON

January  
to March 2018



cinema workshops classes kids galleries shop cafe

**THEHORSEBRIDGE**WHITSTABLE



*Copperfields*  
OF WHITSTABLE

*Cookshop & Gifts Since 1956*

*Inspiration for your kitchen and home*

Cookware • Homeware • Gifts • Bakeware • Furniture • Electrical • Cards

shop@copperfieldsofwhitstable.co.uk • www.copperfieldsofwhitstable.co.uk

Open 7 days a week • 93-95 High St • Whitstable • Kent • CT5 1AY • Tel: 01227 273519

# THE HORSEBRIDGE WHITSTABLE

January - March 2018

## contents

supported by



**NATIONAL  
LOTTERY FUNDED**

	Page
Galleries .....	16
What's On Calendar .....	26
Clubs .....	7
Workshops .....	30
Children's Workshops .....	29
Classes for Adults .....	33
Classes for Children .....	39
Shop .....	43
Room Hire .....	45
Friends .....	46
Cafe .....	47



# betty loves bryan

Two floors of contemporary art, homeware and clothes

And THE place to buy Breton stripes!

108 High Street, Whitstable, Kent CT5 1AZ

01227 271001 / 07788 910115

bettylovesbryan@btconnect.com • www.bettylovesbryan.com



Follow us on Twitter  
@lizziedesign



Like us on  
Facebook



Follow us on Instagram  
@betty\_loves\_bryan

# welcome

Welcome to our first brochure of 2018 and the launch of our New Ambitions programme of exciting developments and events run by the centre.

Highlights include the Horsebridge Open Exhibition in January, the start of Young Digital Makers, an exciting two year National Lottery funded project, our popular monthly film matinee and a special screening of independent art film 'London Symphony'. We are also embarking on a series of art lectures and a children's art club taking inspiration from the artistic programme in our galleries.

Admission to the centre is free and we are a registered charity which relies on the support of our users and the public to continue this valuable resource.



**Fishslab  
Gallery**  
11 Oxford Street  
Whitstable

 Fishslab Art Gallery  
 @fishslab1



*Art Gallery*  
[www.fishslabgallery.co.uk](http://www.fishslabgallery.co.uk)



**french**...  
**inspired  
interiors**

textiles...  
upholstery...  
re-upholstery...  
curtains, blinds,  
curtain poles...  
wallpaper & paint...

68 Oxford Street, CT5 1DA  
**07979 811533**

[shop@frenchwhitstable.co.uk](mailto:shop@frenchwhitstable.co.uk)  
[www.frenchwhitstable.co.uk](http://www.frenchwhitstable.co.uk)

 @french\_whit  
 frenchinteriors.whitstable  
 Frenchinteriors.Whitstable

## Comic Club

Thursday 11 January, 8 February, 8 March 7-9pm

clubs

£4 to join, £2 thereafter

A great monthly club for lovers of comics and graphic novels — a heady mix of industry professionals and fans of the artform.

Have a beer and read great, inspiring, new or vintage graphic fiction.

18+



*Chappell* CONTEMPORARY

**ART GALLERY**  
30 Oxford Street  
Whitstable, CT5 1DD

[mail@chappellcontemporary.com](mailto:mail@chappellcontemporary.com)  
[www.chappellcontemporary.com](http://www.chappellcontemporary.com)

01227 637329

**Specialising in Limited edition  
Prints and Contemporary Originals**





# MERIDIAN

## Meridian are inline with all your Mortgage Needs

We recommend from the whole of the market and offer a FREE no obligation initial consultation



- Mortgages
- Remortgages
- Buy to Let Mortgages
- Bridging Loans / Fast Finance
- Secured Loans
- Home Insurance
- Life Assurance
- Critical Illness
- Income Protection

### Meridian Consultants

50 - 52 Oxford Street, Whitstable, Kent CT5 1DG

Call us today on **01227 26 66 88**

[info@meridian-mortgages.co.uk](mailto:info@meridian-mortgages.co.uk)

YOUR HOME MAY BE REPOSSESSED IF YOU DO NOT KEEP UP REPAYMENTS ON YOUR MORTGAGE.

Meridian is a trading style of Rosemount Financial Solutions Ltd who are an appointed representative of Intrinsic Financial Planning Limited (Registered in England 5372217) and Intrinsic Mortgage Planning Limited, which are authorised and regulated by the Financial Conduct Authority. Intrinsic Financial Planning Ltd and Intrinsic Mortgage Planning Limited are entered on the FCA register under reference 440703 and 440718.

## Horsebridge Matinees

Free tea or coffee and biscuit at every performance

film

### Moonlight (2016)



Thursday 18 January 2pm

tickets £5 earlybird £4

Moonlight is a US drama following the impact of a young man's upbringing, relationships and surroundings across three periods of his life.

1hr 48mins Cert 15

**For earlybird discount book before 6 January.**

### Dunkirk (2017)



Thursday 22 February 2pm

tickets £5 earlybird £4

Dunkirk is a wartime drama about the Allied evacuation from Northern France in 1940.

1hr 46mins Cert 12A

**For earlybird discount book before 8 February.**

### My Cousin Rachel (2017)



Thursday 22 March 2pm

tickets £5 earlybird £4

My Cousin Rachel is a British drama based on the novel by Daphne du Maurier in which a young man becomes besotted with his widowed cousin.

1hr 46mins Cert 12A

**For earlybird discount book before 8 March.**

book by phone **01227 281174** or online [horsebridge-centre.org.uk/tickets](https://horsebridge-centre.org.uk/tickets)



## MARGO SELBY

Bradstowe House, 35 Middle Wall  
Whitstable, Kent CT5 1BJ

Open Studio  
Monday - Friday (excl. Bank Holidays)  
10am - 4pm

+44(0)1227 282758  
info@margoselby.com | www.margoselby.com

**WE  
LOVE  
SELLING & LETTING  
PROPERTIES**

**Call 01227 770717**

Pay us a visit at:  
98 High Street, Whitstable, Kent CT5 1AZ  
or Email us: whitstable@reedsrains.co.uk



**Reeds Rains**

The Estate Agents

**www.reedsrains.co.uk**

**film**

## London Symphony Film Screening + Q&A

Friday 9 February 7pm

tickets £5

London Symphony is a brand new silent film which offers a poetic journey through the capital. It is a cultural snapshot of the cosmopolitan nature of city life as it stands today, and a celebration of London's rich diversity of culture, architecture and religion. It is also a modern day 'city symphony', a genre of filmmaking that flourished in the 1920s, and consisted of films that attempted to build poetic portraits of city life. As well as serving as a kind of virtual tourism, such films raise important and universal questions about the nature of community life in the modern era.



Nominated for the Michael Powell Award for Best British Film at the Edinburgh International Film Festival 2017.

★★★★★ - FilmJuice

★★★★★ - Shadows on the Wall

★★★★★ - Little White Lies

★★★★ - Total Film

★★★★ - Radio Times

Directed by Alex Barrett Cert PG

book by phone **01227 281174** or online **horsebridge-centre.org.uk/tickets**

# Horsebridge Art Talks

talks

The Horsebridge presents a new series of monthly art talks, beginning with lectures on the art of Latin America. Lead by Hephzibah Llewellyn Jones, these sessions will delve into the colour, diversity and vitality of Latin American art by discussing three aspects in three linked talks: the artisan women who create, the vivid imagination of Latin American painters and the mural-covered buildings of Mexico.

**Booking recommended.**

**Contact:** [hephzibahllewellynjones@aol.com](mailto:hephzibahllewellynjones@aol.com) or 07763 016 941 directly for more detailed information.

**Wednesday 24 January 7pm**

tickets £5

Session 1 - Traditional Artisan Work of Latin American Women: Sacrifice and Strength

**Wednesday 21 February 7pm**

tickets £5

Session 2 - Looking at Depictions of La Malinche: Translation, Controversy, Identity

**Wednesday 21 March 7pm**

tickets £5

Session 3 - The Mexican Mural Movement: Exploring the History and Culture



# Kids Art Sessions

## Weekly Art Club

Thursdays 4-5pm

£3 per child or £5 for two children

Starting in January, the Horsebridge will be running a weekly art club and special school holiday workshops throughout the year. The art club will be designed around our gallery programme, taking inspiration from the rich and varied themes from selected exhibitions.

## Closing The Loop Children's Workshops

£3 per child or £5 for two children. Workshops will need to be booked in advance

Learn about the Circular Economy and sustainable ways of making through a series of Half term workshops with Nicola Priest from The Disruptive Designer Blog and Future Foundry.



**Closing the Loop**

### Monday 12th February

**10am -12pm** Paper Making for age 6 and under - learn how to use old paper scraps to make your own unique recycled paper to use for art projects.

**2pm -4pm** Jewellery Upcycling for age 7 and over - Turn old jewellery and beads into a new piece of special jewellery.

### Friday 17th February

**10am -12pm** Mono Printing for age 6 and under - Create a printed piece of art work using repurposed materials, you can even print on some of the paper made in Mondays workshop.

**2pm-4pm** Screen Printing for age 7 and over - Give an old item of clothing new life or make a hand me down your own by printing a cool design on it.

Everyone that takes part in the workshops will also get the opportunity to work on a large collaborative piece of artwork that will hang in the gallery during the exhibition.



# Birdies Restaurant

Local fish from  
**Whitstable Harbour**

Classic **French** Cuisine

Opening Times:

### Lunch

Tues - Sun 12.00/2.30

### Evenings

Tues - Mon 6.00/9.30

41 Harbour Street  
Whitstable, Kent CT5 1AH  
For reservations telephone:  
01227 265337



## HQ HeadQuarters

come and  
celebrate five  
years in our newly  
refurbished salon

offers all hair  
services for  
**Men  
Women &  
Children**

the salon also  
provides a  
massage  
therapy room  
and coffee  
corner

133 Tankerton Road, Tankerton, CT5 2AW

**01227 637678**

[www.hqtankerton.com](http://www.hqtankerton.com)



## knitting with *Whitknits*

### Knitting workshops with Linda Tiley M.Des(RCA)

Booking required for all workshops



#### Learn To Knit

Wed 17 January 10.30am – 1.30pm

£30

Learn to Knit is for absolute beginners. You will learn how to cast on and off, knit and purl stitches. There will be some guidance about different yarns, how to select them and the tools needed. Materials included.

#### Learn To Knit Cables

Wed 7 February 10.30am – 1.30pm

£30

How to knit a basic Cable design and which tools to use for best results. You will start a chunky bobble hat or pair of wrist warmers. The pattern and materials will be included. You will need to be able to cast on and off, and work knit and purl stitches.

#### How To Knit with Two Colours

Wed 14 March 10.30am – 1.30pm

£30

This workshop would be suitable for knitters who wish to develop their skills by learning a new technique, leading to bigger multi-colour projects.

#### Macramé Workshop

Wed 21 March 10.30am – 12.30pm & 6-8pm

£20

Two hour session. Make a hanging plant pot. Materials included but bring your own pot and plant!



# galleries

Our galleries offer a diverse and dynamic exhibition programme throughout the year. They serve as a platform to showcase work from a wide range of artists as well as art, heritage and community projects curated by the Horsebridge.

The galleries are free to visit and are open to public every day apart from the first and last day of the exhibition dates which are dedicated installation and de-installation days.

We are now accepting proposals from artists interested in exhibiting in the galleries in 2019. However, we would also like to increase the number of opportunities for presenting artists' work in the centre and animate the whole building at the same time. Proposals for temporary installations, mini exhibitions and site-responsive works are all welcome - we have a large reception window, a staircase and communal areas which can become spaces for exhibition and experimentation. We would also strongly like to encourage artists to sign up for Instagram takeovers delivered through our account, harnessing the possibilities of this digital gallery and letting our online audiences become more acquainted with artists' practice. For an application form and more information, please email [mirka@thehorsebridge.org.uk](mailto:mirka@thehorsebridge.org.uk)



13 - 28 January 2018

## HORSEBRIDGE OPEN 2018:

### Art is Something Much More Dangerous

Following an open call in late 2017, this exhibition assembles works submitted by mostly Kent-based artists and creatives responding to the notions of 'living rooms' and 'lived-in spaces'. Addressing the characteristics and functions of such key domestic environments, whether real or fictional, historical or contemporary, through the personal or the collective, our intention was to give the large number of active creatives in the region a platform for presenting their work and bring them together into one space that is alive, social and shared.



The Horsebridge Centre



@thehorsebridge



thehorsebridge

The Horsebridge New Ambitions Prize worth £150 will be announced towards the end of the exhibition while The People's Choice Award worth £100 will allow exhibition visitors to find and vote for their favourite piece of work.

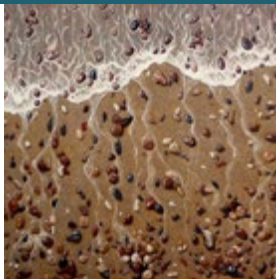
## gallery 1

31 january - 13 february

### What a Wonderful World

Gaven Alexander

Gaven Alexander is a painter whose works explore the richness of skies and seas and, more recently, examine small animal life, too. His canvases attempt to embody the striking, dramatic visual aspects of nature while also paying attention to the colours and shapes of insects. The painter has exhibited in galleries in Kent and has work in private collections around the world.



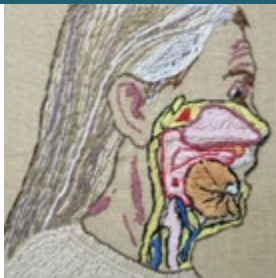
## gallery 2

31 january - 13 february

### Made in Herne Bay: Recent Works

Made in Herne Bay

The exhibition brings together a group of artists and makers based in Herne Bay and focuses on their latest production. Probing materials, patterns and textures and exploring the possibilities of object making itself, their works include screenprints on paper and fabric, accessories, rustic planters and enamelware.



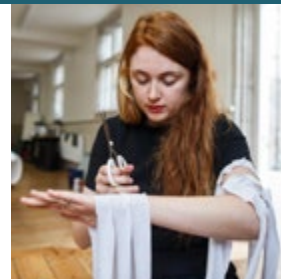
## gallery 1

14 - 20 february

### Closing the Loop

Future Foundry

Future Foundry, the social enterprise that helps young people gain a foothold in the creative industries, showcases the results of their latest training programme, 'Closing the Loop', which took place in Dover and Sheerness in 2017. Join them on Open Days on Saturday 17th & Sunday 18th February for demonstrations of 3D printing and upcycling.



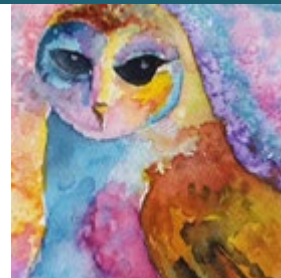
## gallery 2

14 - 27 february

### Creative Identity

Canterbury Art Studio

Creativity is innate. Applying this philosophy, the exhibitors met in regular studio groups and using art therapy principles, proceeded to discover and explore their creative identity, challenging stigma and focusing upon wellbeing. Please come and visit the exhibition, meet the artists and offer them constructive feedback in person or in writing.



# CGS Blinds & Shutters

SHUTTERS



VERTICAL



VENETIAN



ROLLER



PERFECT FIT



PLEATED



ROMAN



OFFICE  
OR HOME

♦ CONSERVATORY ROOFS ♦

*Come and visit our Showroom, and choose from Materials/Fabrics.*

*Expert advice with 1st Class service.*

*All blinds are custom made to your needs.*

**Supply Only Or Surveyed And Installed**

**107A Tankerton Road, Whitstable CT5 2AJ**

**01227 278643**

**www.cgsblinds.co.uk**



gallery 1

21 - 27 february

## Figures in a Floating Landscape - Turner in The South

Peter Coyte, Dora Frankel

Composer Peter Coyte, choreographer Dora Frankel and dancer Josh Hutchby will be researching new work using sound, music, dance and imagery inspired by Turner's Kent coast work and environmental change. Visitors will be able to see the evolution of this part of the project over 7 days.



gallery 2

28 february - 13 march

## Life on the Edge

Louise Nevett, Richard Curtis

The paintings, drawings and prints featured in this exhibition are reflections of the environment in which the two artists live, addressing landscape, social and domestic issues and identity. Richard Curtis's work examines barren natural beauty, urban deprivation and historical significance of towns. Louise Nevett, on the other hand, questions social expectations related to motherhood, food and identity.







Liz McGown Louise Whorlow

**CHIROPRACTORS**

- Relieve Pain and Improve Function and Performance
- Back and Neck Pain, Headaches
- Sport Injuries, Joint Pain and Muscle Aches
- All Ages Welcome: Children, Teenagers, Adults and Elderly

**EVOLUTION HEALTH 01227 273821**  
62 Borstal Hill  
CT5 4NA

GCC Registered  
General Chiropractic Council

Member of the  
British Chiropractic Association



A friendly, independent family run health shop trading in Whitstable since 1970

81 High Street, Whitstable, Kent CT5 3DY

01227 278 550

whitnutcentre@gmail.com

@whitstablenutri

samson & coles  
ltd

Modern British Jewellery Gallery



Bespoke Design Commissions Repairs

13 Oxford St, Whitstable, CT5 1DB 01227 277985  
Opening hours: Tues - Sat 10.30am - 5.00pm

gallery 1

28 february - 13 march

**Bringing the Outside In**  
Canterbury Society of Art

'Bringing the Outside In' will challenge viewers to contemplate and reconsider their relationship with the world. Showcasing watercolours, acrylics and oils, natural collage, inks, lino-printing and ceramics, the artists intend to take observers on a journey that questions their lived experiences and provokes looking at the(ir) world in a new light.



CANTERBURY SOCIETY OF ART

gallery 1

14 - 27 march

**Beyond the Stitched Surface:  
An Exploration of Textile Art**  
Altered Textiles

'Beyond the Stitched Surface' is an exhibition that explores the resurgence in sewing and interest in textiles and demonstrates that skill and passion can lead to challenging, thought-provoking works of art. Building on the group's previous successful exhibitions, the members introduce more exciting displays that include new techniques such as gelliplate printing, linocut and screen printing.





## ALMA CAIRA GLASS FUSING WORKSHOPS 2018



### BEGINNERS SATURDAY WORKSHOPS

21st April, 2nd June

14th July, 15th September

10am - 3pm £60 PER SESSION

Why not treat someone to one of my gift vouchers?

Please contact me for further details or to make a booking.

[www.almacaira.co.uk](http://www.almacaira.co.uk) [alma@almacaira.co.uk](mailto:alma@almacaira.co.uk)

01227 280 648 07947 842 642

Follow me on Facebook: AlmaCairaFusedGlass

**Eat too much this Christmas?**

I'm your local independent  
Cambridge Weight Plan  
Consultant - Call me today

Charmaine Powell  
078 6644 0524 [charmaine.cwp](mailto:charmaine.cwp)  
**Cambridge**  
Weight Plan®  
Independent Consultant

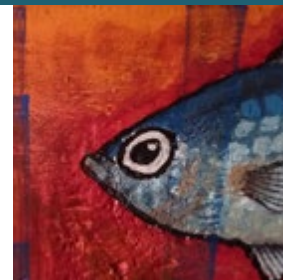
## gallery 2

14 - 27 march

### Beach

Andy Loft

The inspirations for the exhibition come from a childhood by the seashore and stories of the sea. The artist, originally a graphic designer, now employs acrylic paints on re-cycled wood backgrounds, making playful and exuberant work. His exhibition covers lobsters and lollies, fish and fantasy, beach balls and beach belles and intends to stir up memories locked in the past.



## Integrative Body Psychotherapy



**Energy Work**  
**Breath Work**

[ruthhoskinsukcp@gmail.com](mailto:ruthhoskinsukcp@gmail.com)  
[www.body-psychotherapy.org.uk](http://www.body-psychotherapy.org.uk)  
[www.counselling-directory.org.uk](http://www.counselling-directory.org.uk)

**Ruth Hoskins MA UKCP 07742 295506**



Want to improve your existing space?  
Book a one hour no obligation consultation  
with us for your £40 donation to the  
Horsebridge Centre.  
You'll have some new ideas and the  
Horsebridge will be £40 better off.

Tweet us [@spacemakerarch](https://twitter.com/spacemakerarch) or call Adam or  
Louisa on 01227 277831.  
[www.spacemakerarchitects.co.uk](http://www.spacemakerarchitects.co.uk)

## gallery 1

28 march - 10 april

### Spring Show

Made in Whitstable

Seventeen Whitstable artists and makers present their latest endeavours. Their work draws on the maritime culture of the town and celebrates the beauty and benefits of Whitstable's coastal location.



# what's on calendar to book: [horsebridge-centre.org.uk/tickets](https://horsebridge-centre.org.uk/tickets) 01227 281174

## January

Thu 11	club	Comic Club	7pm	p7
Sat 13-Sun 28	gallery	Art is Something Much More Dangerous Horsebridge Open 2018		p17
Wed 17	whitknits	Learn to Knit L. Tiley	10.30am	p15
Thu 18	film	Moonlight Horsebridge Matinee	2pm	p9
Wed 24	talk	Horsebridge Art Talk	7pm	p12
Wed 31-Tue 13	gallery	What a Wonderful World G. Alexander		p18
Wed 31-Tue 13	gallery	Made in Herne Bay: Recent Works Made in Herne Bay		p18

## February

Wed 7	whitknits	Learn to Knit Cables L. Tiley		p15
Thu 8	club	Comic Club		p7
Fri 9	film	London Symphony Film Screening + Q&A	7pm	p11
Wed 14-Tue 20	gallery	Closing the Loop Future Foundary		p19
Wed 14-Tue 27	gallery	Creative Identity Canterbury Art Studio		p17
Sat 17	family	Mother's Day Keep Sake	2pm	p28
Wed 21-Tue 27	gallery	Figures in a Floating Landscape P. Coyte, D. Frankel		p21
Wed 21	talk	Horsebridge Art Talk	7pm	p12
Thu 22	film	Dunkirk Horsebridge Matinee	2pm	p9

## to book: [horsebridge-centre.org.uk/tickets](https://horsebridge-centre.org.uk/tickets) 01227 281174

Wed 28-Tue 13	gallery	Life on the Edge L. Nevett, R. Curtis		p21
Wed 28-Tue 13	gallery	Bringing the Outside In Canterbury Society of Art		p23

## March

Thu 8	club	Comic Club	7pm	p7
Wed 14-Tue 27	gallery	Beyond the Stitched Surface Altered Textiles		p23
Wed 14-Tue 27	gallery	Beach A. Loft		p27
Wed 14	whitknits	How to Knit with Two Colours L. Tiley	10.30am	p15
Wed 21	whitknits	Macrame Workshop L. Tiley	10.30am & 6pm	p15
Wed 21	talk	Horsebridge Art Talk	7pm	p12
Thu 22	film	My Cousin Rachel Horsebridge Matinee	2pm	p9
Wed 28-Tue 10	gallery	Spring Show Made in Whitstable		p27
Sat 31	family	Easter Seaside Pebble Creatures	2pm	p28

## Half Term Family Craft Sessions at the Horsebridge

Adult supervision required.

Join artist Sharon Cavalier for 2 seasonal workshops celebrating Mother's Day and the start of Easter. Booking advised.



### Mother's Day Keep Sake

Saturday 17th February 2-4pm

£12 (£10 advanced booking)

Plaster cast a hand or foot print in clay with Sharon Cavalier. Any age welcome but under 7 accompanied by an adult.



### Easter Seaside Pebble Creatures

Saturday 31st March 2-3pm

£7 (£5 advanced booking)

Easter Seaside Pebble Creatures - paint and decorate a giant pebble mounted on driftwood with a variety of craft materials- Any age welcome.

# children's workshops

## Drama Fun Club

Mon 12 – Thurs 15 February 5-7 years £40 10-11am (Wed 2-3pm)

8-11 years £60 11am-12.30pm (Wed 3-4.30pm). Booking Essential

Drama Fun Club is a drama skills workshop in which we will play games and develop our confidence and imagination through stories, role-plays, mime and improvisation. The course culminates in a short performance for parents.

## Dot Kids: Salvador Dali Children's Art Workshop

Tue 13 February 2.15pm - 3.45pm 5-11 years. Booking Essential

Discover and discuss Dali's work and create an art piece influenced by Dali.

## Dot Kids: Children's Animation Course

Wed 14 – Thurs 15 February 9.45am - 12.45pm 5-11 years. Booking Essential

Learn animation techniques & create a short animated film. Booking essential. See website or contact for more details.

## Dot Kids: Van Gogh's Sunflowers Children's Art Workshop

Wed 14 February 2.15pm - 3.45pm 5-11 years. Booking Essential

Discover and discuss Van Gogh's Sunflowers and create your own Sunflower painting on canvas.

## Dot Kids: Kandinsky's Compositions Children's Art Workshop

Thurs 15 February 2.15pm - 3.45pm 5-11 years. Booking Essential

Discover and discuss Kandinsky's Composition paintings and create your own abstract painting in response to music.

## Dot Kids: Children's Comic Book Illustration Course - Superhero Theme

Sat 3, 10 and 17 March 1.30-3.30pm. Booking Essential

Artist & illustrator Quinton Winter (Vertigo Comics/2000ad) will guide the children through the creative process to produce their own superhero Comic Book. See website or contact for more details & to book.

For all Dot Kids workshops contact [julie@dotkids.co.uk](mailto:julie@dotkids.co.uk) or 07961 303156 to book 29

# workshops

---

## Transformational Voicework (Narrative Voicescapes) with Naomi Browton

Wed 10 January, 7pm - 8.45pm £13  
Small group to hold space. Helpful if you have done December's creative workshop but not necessary. Booking Essential. Contact: 01227 741802 07955 950223  
naomy7@hotmail.co.uk www.sacredvoicehealingdrum.co.uk

---

## Fabric Jewellery Making with Beki Gowing

Sat 27 January, 10.30am - 12.30pm £25  
Learn to make your own unique and eye-catching jewellery using fabric. £25 including all materials. Visit [beki-gowing.eventbrite.com](http://beki-gowing.eventbrite.com) for tickets.  
Contact: [beki@printandpresslondon.co.uk](mailto:beki@printandpresslondon.co.uk) for more information

---

## Stained Glass Taster Days

Sun 28 January, Sun 25 February, Sun 25 March  
Learn the basics of how to cut glass and solder lead and make your own small stained glass panel to take home. All tools and materials are provided with a choice of patterns to follow and colours to use.  
Contact: [stephenharries.glass@gmail.com](mailto:stephenharries.glass@gmail.com) www.stephenharriesglass.co.uk

---

## Drum Circle with Naomi Browton

Wed 7 February, 7pm - 8.30pm £10  
Therapeutic sound with drum. You will also have the opportunity to give and receive a short drum sound bath if you choose. You will need a drum. Booking Essential.  
Contact: 01227 741802 07955 950223 naomy7@hotmail.co.uk  
www.sacredvoicehealingdrum.co.uk

---

## The Art of Repeating Patterns with Beki Gowing

Sat 24 February, 10am - 1pm £45  
Pattern design masterclass exploring pattern theories and structure. £45 including all materials. Visit [beki-gowing.eventbrite.com](http://beki-gowing.eventbrite.com) for tickets.  
Contact: [beki@printandpresslondon.co.uk](mailto:beki@printandpresslondon.co.uk) for more information

---

## Toning and Overtone with Naomi Browton

Wed 7 March, 7pm - 8.30pm £10  
You will be able to get tips on your Overtone Chanting if you have learned before or new to this practice. Booking Essential.  
Contact: 01227 741802 07955 950223 naomy7@hotmail.co.uk  
www.sacredvoicehealingdrum.co.uk

---

## Lino Print Your Own Tote Bag with Beki Gowing

Sat 10 March, 10.30am - 12.30pm £30  
Learn how to carve lino stamps and print your own bespoke tote bag. £30 including all materials. Visit [beki-gowing.eventbrite.com](http://beki-gowing.eventbrite.com) for tickets.  
Contact: [beki@printandpresslondon.co.uk](mailto:beki@printandpresslondon.co.uk) for more information

---

## The Magic of Blue and White with Lana Arkhi

Wed 14 March, 11am - 2pm  
Artist Lana Arkhi shows how to turn plain porcelain pieces into beautiful blue and white decorative interior objects, using the original technique of blue and white porcelain painting. Materials included. Contact for more details and price.  
Contact: 07858 956927 [lane.arkhi@gmail.com](mailto:lane.arkhi@gmail.com) www.lanaarkhi.com

---

## Concertina Sketchbook with Karen Stamper

Sun 18 March, 10.30am - 4pm  
In this workshop we will work with inks, pens, pencils and collage to develop 4-10 pages on the theme of building/streets. Please try to buy a concertina sketchbook from Seawhite, Cassart or Amazon. Contact for more details and price.  
Contact: 07789 242821 [karen@karenstampercollage.com](mailto:karen@karenstampercollage.com)

---

## Creative Collages Masterclass with Beki Gowing

Sat 24 March, 10am - 1pm £40  
Explore the complex and creative ways you can use a collage to make imagery and learn a variety of paper cutting techniques. £40 including all materials.  
Visit [beki-gowing.eventbrite.com](http://beki-gowing.eventbrite.com) for tickets.  
Contact: [beki@printandpresslondon.co.uk](mailto:beki@printandpresslondon.co.uk) for more information





An open-air showcase of locally-created, British made, premium and hand-crafted goods and fine art. Micro eateries serve a mouth watering variety of food. Set in the working harbour of Whitstable.

Open every weekend (weather permitting) and 5 days a week during the summer.  
Pop-up Huts available to rent.

[www.harbourmarketwhitstable.co.uk](http://www.harbourmarketwhitstable.co.uk)



# classes for adults

art Sunday	Life Drawing with Ron Freeman 2-4pm Alternate Sundays, twice a month. If you would like to join these informal sessions, please speak to Ron. Contact: 07749 835036 mail@ronfreeman.co.uk
craft Wednesday	Bead 'n Banter with Jayne Johnson 6-9pm First Wednesday of the month. Bring beadwork and exchange tips, with monthly raffle and quarterly challenges. Contact: 01227 265293 gillgoldfinch@btinternet.com www.rainbowcollection.co.uk
craft Sunday	Slow Stitch with Yvonne Fuchs Starting April 8, for block of 8 sessions running on second Sunday of the Month (excluding August) 2-4pm Please contact Yvonne for details of this year's course. Contact: fuchsy141@hotmail.com
dance Wednesday Thursday	Flamenco Dance with Charlotte Baynes 11.30am-12.30pm - Mixed Level 5.15-6.15pm - Mixed Level Enjoy an exciting array of Flamenco styles such as Alegrias, Bulerias, Guajiras + more. Charlotte is a highly experienced and inspired teacher within the arts. Ideally, wear shoes with a firm heel. Contact: 07906 685109 charlottecadiz@yahoo.co.uk charlottebaynes.com
dance Friday	Ballet & Contemporary Dance with Rosita Yarboy 10-11am For adults, run by Reach Performing Arts. Contact: 01227 369891 reachacademy@sky.com www.reachperformance.co.uk
dance Friday	Adult Tap Dance with Rosita Yarboy 11am-12 noon Run by Reach Performing Arts. Contact: 01227 369891 reachacademy@sky.com www.reachperformance.co.uk

<b>dance</b> Saturday	<b>Diva Bollywood Dance Class</b> with Jasmin deSilva-Smith 10.30-11.30am An hour to let your inner Diva out! A sneaky work out for your mind and body, it's fun to follow, simple routines. Everyone welcome. Contact: 07761 199179 <a href="mailto:jasmin@my-energise.co.uk">jasmin@my-energise.co.uk</a>
<b>fitness</b> Monday	<b>Boxercise</b> with Graham Bedford 7-8pm For men and women. Graham Bedford has been teaching Boxercise for five years and is a qualified personal trainer. Contact: 01795 590118 <a href="mailto:grahambedford@btinternet.com">grahambedford@btinternet.com</a>
<b>fitness</b> Monday	<b>Zumba</b> with Hayley Acton 8.15-9.15pm Party yourself into shape with Latin-inspired, calorie-burning, dance fitness! Beginners welcome, first class just £1. Contact: 07562 037318 <a href="mailto:hayleyacton1@gmail.com">hayleyacton1@gmail.com</a>
<b>fitness</b> Tuesday	<b>Callanetics® Exercise Method</b> with Jennifer Watson 9.30-10.30am and 10.30-11.30am Lose at least one dress size in 10 hours! Safely strengthen your whole body, especially core and pelvic floor, and dramatically improve your posture. Contact: 07966 731323 <a href="mailto:watsonjennifer16@gmail.com">watsonjennifer16@gmail.com</a> <a href="http://www.callanetics-canterbury.co.uk">www.callanetics-canterbury.co.uk</a>
<b>fitness</b> Friday	<b>Powerhoop</b> with Anika Fit 2.15-3pm Get fit with weighted hoops and enjoy a fun class while slimming down your waist and get into shape. Booking required. Contact: 07484 780328 <a href="mailto:AnikaFit@yahoo.co.uk">AnikaFit@yahoo.co.uk</a> <a href="http://www.active-fitness.vpweb.co.uk">www.active-fitness.vpweb.co.uk</a>
<b>languages</b> Monday	<b>Spanish Intermediate Plus</b> with Kent Adult Education 10am-12 noon Contact: 03000 412222 <a href="http://www.kentadulthoodeducation.co.uk">www.kentadulthoodeducation.co.uk</a>
<b>languages</b> Monday	<b>Spanish Beginners Modular B</b> with Kent Adult Education 12.30-2.45pm Contact: 03000 412222 <a href="http://www.kentadulthoodeducation.co.uk">www.kentadulthoodeducation.co.uk</a>
<b>languages</b> Tuesday	<b>Italian Beginners</b> with Kent Adult Education 1-3pm Contact: 03000 412222 <a href="http://www.kentadulthoodeducation.co.uk">www.kentadulthoodeducation.co.uk</a>

<b>languages</b> Thursday	<b>French Intermediate</b> with Kent Adult Education 11.30am-12.30pm Alternate weeks. Contact: 03000 412222 <a href="http://www.kentadulthoodeducation.co.uk">www.kentadulthoodeducation.co.uk</a>
<b>languages</b> Thursday	<b>French Intermediate Plus</b> with Kent Adult Education 1-3pm Contact: 03000 412222 <a href="http://www.kentadulthoodeducation.co.uk">www.kentadulthoodeducation.co.uk</a>
<b>pilates</b> Wednesday	<b>Pilates</b> with Stephanie Fancy Intermediate 6.30-7.30pm, Beginners 7.30-8.30pm Men and women, give yourself the best present for 2018. Contact: 07890 897851 <a href="mailto:stephaniefancy@gmail.com">stephaniefancy@gmail.com</a> <a href="http://www.facebook.com/fancypilates">www.facebook.com/fancypilates</a>
<b>pilates</b> Thursday	<b>Body Control Pilates</b> with Alison Coble 6.45-7.45pm Mixed Ability, 7.45-8.45pm Beginners Practice pilates regularly and your body will become stronger, toned and more flexible. Suitable for people of all ages and levels of fitness. Small class sizes - maximum 12 participants. For mixed ability and beginners. Contact: 07903 010816 <a href="mailto:alisonpilates@aol.com">alisonpilates@aol.com</a> <a href="http://www.pilateswithalison.net">www.pilateswithalison.net</a>
<b>pilates</b> Friday	<b>Beginners Pilates</b> with Anika Fit 1.30-2.15pm Improve your posture and core strength, reduce back pain, tone and stretch your muscles plus feel relaxed. Bring a mat, towel and a drink. Please book your class in advance and pay later. Contact: 07484 780328 <a href="mailto:AnikaFit@yahoo.co.uk">AnikaFit@yahoo.co.uk</a> <a href="http://www.active-fitness.vpweb.co.uk">www.active-fitness.vpweb.co.uk</a>
<b>tai-chi</b> Monday Thursday	<b>Tai-Chi</b> with Christine Hopper 3-4pm 12-1pm T'ai Chi Ch'uan style is the traditional Yang form. When practiced regularly T.C.C brings noticeable improvement at physical, energetic, and emotional levels. The health benefits of a serious practice are rapidly felt in daily life. Booking essential. Contact: <a href="mailto:christinehopper@talktalk.net">christinehopper@talktalk.net</a>
<b>theatre</b> Monday	<b>Kent Coast Theatre (KCT)</b> with Lou Fowkes & Alison Mead 7-9pm. Engaging community & inspiring potential, KCT is a community theatre company based at the Horsebridge. Productions and acting workshops throughout the year for adults 18+. Contact: 01227 280314 <a href="mailto:info@kentcoasttheatre.co.uk">info@kentcoasttheatre.co.uk</a> <a href="http://www.kentcoasttheatre.co.uk">www.kentcoasttheatre.co.uk</a>

well being Monday	<b>Invicta Health</b> with Tracey Barratt 10-11.15am Bipolar health education. 11.30-12.30pm Well being for psychosis health education and support. Contact for more details or visit the website. Contact: 0800 242 5199 <a href="mailto:invictahealth@nhs.net">invictahealth@nhs.net</a>
well being Thursday	<b>Meditation and Mindfulness</b> with Kate Purnell From February 5, 11am-12pm On-going series for introductory courses on Buddhist Meditation and Mindfulness. There's no need to book in advance, simply turn up and register when you arrive. These classes are suitable for everyone. Contact: 07874 914954 <a href="mailto:pursuingkatepurnell@gmail.com">pursuingkatepurnell@gmail.com</a> <a href="http://www.meditateinkent.com">www.meditateinkent.com</a>
well being	<b>Life Coaching and Therapy</b> with Suzi Tyler Book an appointment anytime Suzi Tyler, Breakthrough Session with Hypnotherapy, NLP & EFT Matrix Re-imprinting. CNHC & BIH Registered. Clear hidden limits that spoil your health & happiness. Specialism: Panic Attacks. Contact: 07836 635233 <a href="http://www.rapid-health.co.uk">www.rapid-health.co.uk</a>
well being Wednesday	<b>Cambridge Weight Plan Independent Consultant</b> with Charmaine Powell Once a month, 11am-12pm Drop in and find out how Cambridge Weight Plan can help you lose weight. Choose from a variety of delicious meal replacement products to suit your lifestyle, and get my 1:1 support and guidance. Come in and see me to get the ball rolling. Contact: 07866 440524 <a href="mailto:charmaine.powellkent@gmail.com">charmaine.powellkent@gmail.com</a> <a href="http://www.cambridgeweightplan.com/charmaineP">www.cambridgeweightplan.com/charmaineP</a>
writing Sunday	<b>Creative Writing Course with a Difference</b> with Linda M James 2-4pm Starting January 28, a 6 week writing course with published author and screenwriter Linda M James. Booking essential. Contact: 01227 634107 07969 051064 <a href="mailto:writingunderwater@tiscali.co.uk">writingunderwater@tiscali.co.uk</a> <a href="http://www.lindamjames.co.uk">www.lindamjames.co.uk</a>
yoga Monday	<b>Yoga Basics</b> with Bernadette Fisher 5.45-6.45pm Classical Hatha Yoga for those new to yoga, returning, or seeking a slower class. Contact: 07739 302870 <a href="mailto:bernadetteannef@aol.com">bernadetteannef@aol.com</a> <a href="http://www.bernadettefisheryoga.co.uk">www.bernadettefisheryoga.co.uk</a>

yoga Tuesday	<b>Vinyasa Yoga</b> with Monica Marini 1-2.15pm A dynamic and energising practice open to those with a more developed Yoga practice and/or a good level of stamina. These classes are defined by principles of Vinyasa Krama (intelligent sequencing) and include exploration of alignment, arm balances and the practice of inversions. Contact: 01227 273147 07913 887108 <a href="mailto:momoiah@yahoo.com">momoiah@yahoo.com</a>
yoga Tuesday	<b>Yoga</b> with Emma Epton 6.30-8pm Mixed Level. Yoga Alliance UK registered teacher. Emma is also pregnancy yoga trained. Contact: 07891 454450 <a href="mailto:whitstablecommunityyoga@gmail.com">whitstablecommunityyoga@gmail.com</a>
yoga Tuesday Thursday	<b>Hatha Yoga</b> with Linda Thomson 10-11.30am 10-11.30am A space during the busy and often stressful week for you to stretch in classical yoga postures. For all levels, beginners welcome. Contact: 07516 494300 <a href="mailto:yogajoyful@gmail.com">yogajoyful@gmail.com</a>
yoga Thursday	<b>Yoga Flow</b> with Monica Marini 6.30-7.45pm Come and enjoy a flow-style class that incorporates traditional and contemporary Yoga postures in fluid progression. Focus the mind, cultivate strength, and increase flexibility. This is an open-level class. Contact: 01227 273147 07913 887108 <a href="mailto:momoiah@yahoo.com">momoiah@yahoo.com</a>
yoga Saturday	<b>Yoga Drop-in</b> with Bernadette Fisher 11.45am-12.45pm Classical Hatha Yoga Visitors and new students always welcome - call if you'd like me to bring a mat. Contact: 07739 302870 <a href="mailto:bernadetteannef@aol.com">bernadetteannef@aol.com</a> <a href="http://www.bernadettefisheryoga.co.uk">www.bernadettefisheryoga.co.uk</a>
languages Thursday	<b>Conversational Spanish for Beginners</b> with Kent Spanish Speak 10am-11am Smile and speak some of the lingo! Come and learn how to string together a sentence in Spanish in an enjoyable manner and relaxed group atmosphere. Contact: 07814 852111 <a href="mailto:KentSpanishSpeak@gmail.com">KentSpanishSpeak@gmail.com</a> <a href="http://www.kentspanishspeak.com">www.kentspanishspeak.com</a>



## Hut 23 Harbour Art Gallery

9th – 16th Jan  
**Irene Southon**  
Studio Art Glass

23rd – 30th Jan  
**Daphne Candler**  
Acrylic Paintings

30th Jan – 20th Feb  
**Sarah Louise Dunn**  
Original Pencil  
Drawings & Prints

20th – 27th Feb  
**Janet Dance, Bethany  
Rogers & Marion Sheppard**  
Acrylic Paintings, Ceramics &  
Jewellery



Photo by Sue Carfrae

27th Feb – 13th Mar  
**Ann Diggins  
Paul Elliott**  
Acrylic Paintings

13th – 20th Mar  
**Daphne Candler**  
Acrylic Paintings

20th – 27th Mar  
**Janet Dance, Bethany  
Rogers & Marion Sheppard**  
Acrylic Paintings, Ceramics &  
Jewellery

27th Mar – 3rd Apr  
**Sarah Louise Dunn**  
Original Pencil  
Drawings & Prints

Winter Opening Thursday – Monday, 11am – 3pm

**EASTER SPRINGTIME SHOW at THE HORSEBRIDGE**  
28th March – 10th April



Made In Whitstable



# classes for kids

Music and activities for parents and children to enjoy

dance  
Monday

**Little Cygnets Tap Class** with **Tamsin Over**  
3.50pm-4.35pm 5-10 years Children's beginner tap class. A fun, happy, tapping class aimed at enjoying noisy feet and dancing bodies.  
Free style and Primary/Grade 1 syllabus work.  
Contact: 07971 052501 [tamsinovercygnets@hotmail.co.uk](mailto:tamsinovercygnets@hotmail.co.uk)

drama  
Tuesday

**Perform Workshops**  
4-5pm and 5-6pm 4-7 years  
A unique mix of drama, dance and singing - specifically developed to bring out every child's true potential. Booking essential.  
Contact: 020 7255 9120 [enquiries@perform.org.uk](mailto:enquiries@perform.org.uk) [www.perform.org.uk](http://www.perform.org.uk)

drama  
Wednesday  
Wednesday

**Playtime Theatre** with **Sara Kettlewell**  
4-5pm 7-11 years  
5-6.15pm 11-18 years  
Fun drama workshops run by one of the South East's leading children's theatres. Term-time only. Contact: 01227 266272 07758 729129  
[playtime@dircon.co.uk](mailto:playtime@dircon.co.uk) [www.playtimetheatre.co.uk](http://www.playtimetheatre.co.uk)

languages  
Weds,  
Friday  
Saturday

**La Jolie Ronde French for Children** with **Vicki Sullivan**  
after school classes primary school age  
9.30-10am 0-4 years  
mornings primary school age  
The fun way to learn French with action songs, rhymes, role-play and stories.  
FREE trial session for all new families. Contact: 01227 779126 07889 495577  
[lajolierondevicki@gmail.com](mailto:lajolierondevicki@gmail.com) [www.lajolieronde.co.uk](http://www.lajolieronde.co.uk)



## EVOLUTION HEALTH

- Chiropractic
- Chiroprody / Podiatry
- Bowen Technique
- Cognitive Behavioural Therapy
- Counselling Psychology
- Homeopathy
- Hypnotherapy
- Physiotherapy
- Psychosexual and Couples Therapy
- Reflexology
- Therapeutic & Sport Massage



62 Borstal Hill  
Whitstable  
CT5 4NA  
TEL: 01227 273821

## Hey Diddle Music



**We sing, we move, we learn, we smile!**

Music classes for babies through to pre-schoolers at  
The Horsebridge Centre on Monday mornings.

Specialist Dalcroze Eurhythmics teacher at  
Guildhall School of Music and Drama

Contact Anita Memmott  
nitamemmott@gmail.com 07710 575 390

## Holiday Club

We provide out of school care for children ages 5 to 11 years during the school Holidays at  
Whitstable Junior School.

**Open 8.00 - 18.00 Monday to Friday**

Freshly cooked healthy meals are available each day.

For further information or to book, please visit our website [www.kindergartenkids.co.uk](http://www.kindergartenkids.co.uk)

Alternatively, call head office on **01227 772200**



music  
Monday

Hey Diddle Music with Anita Memmott

9.20am-10.05am 18 months-3 years Term-time, booking required  
10.15am-11am 0-18 months Term-time, drop in.  
11.15am-12 noon 3-4 years Term-time, booking required.  
Contact: 07710 575390 nitamemmott@gmail.com

music  
Tuesday

Musical Bumps Mixed Age with Kirsty Ottaway

10am 2yrs+  
10.45am under 2yrs High quality music classes for babies to pre-school  
children. If you are looking for a class for babies under 1 year please get in  
touch. Contact: 0845 0943786 07934 921072  
canterbury.faversham@musicalbumps.com www.musicalbumps.com

music  
Wednesday

Baby Moonbeams & Little Music Stars with Lucy Weston

10-10.40am 3 months to walking  
10.50-11.30am Walking - 3 years Pre-school music classes.  
Contact: 07946 193733 whitstable@littlemusicstars.net  
www.littlemusicstars.net

yoga  
Monday

Sunny Vista Yoga Multi-Sensory Kids Yoga Class

3.30-4.15pm (4-7yrs)  
4.30-5.15pm (8-12yrs)  
Fun-filled action-packed 45 minute multi-sensory kids yoga classes  
incorporating yoga poses, breathing practices, mindfulness, silly songs and  
oms, stories, music, dance and fun and games to get your child moving and  
grooving in harmony with the universe!  
Contact: 07955 850215 sunnyvista101@icloud.com  
www.facebook.com/sunnyvistayoga

yoga  
Friday

Yoga Family School - Preschool Yoga Classes

9.30-10.15am 2.5yrs - pre-school yogis  
10.30-11.15am pre-school yogis and their younger siblings!  
Contact: 07787 435269 lois@yogafamilyschool.com  
www.facebook.com/yogafamilyschool



# YOGA FAMILY SCHOOL

yoga for all the family this winter



AFTERSCHOOL CLUBS

PRESCHOOL AND TODDLER CLASSES

TWEEN CLASSES

SUNDAY MORNING FAMILY SESSIONS



For full class details find us on Facebook

yoga  
Sunday

Yoga Family School - Parent & Child

10am-12pm

Contact: 07787 435269 [lois@yogafamilyschool.com](mailto:lois@yogafamilyschool.com)

[www.facebook.com/yogafamilyschool](https://www.facebook.com/yogafamilyschool)

kids art  
Wednesday

Dot Kids: Children's After School Art Club

Term Time Only, 4-5.30pm (5-11yrs)

In these workshops we will experiment with various artistic techniques, including paint, collage and sculpture. We will learn that there is no such thing as a mistake and encourage artistic freedom and confidence. See website or contact for more details.

Contact: 07961 303156 [julie@dotkids.co.uk](mailto:julie@dotkids.co.uk)

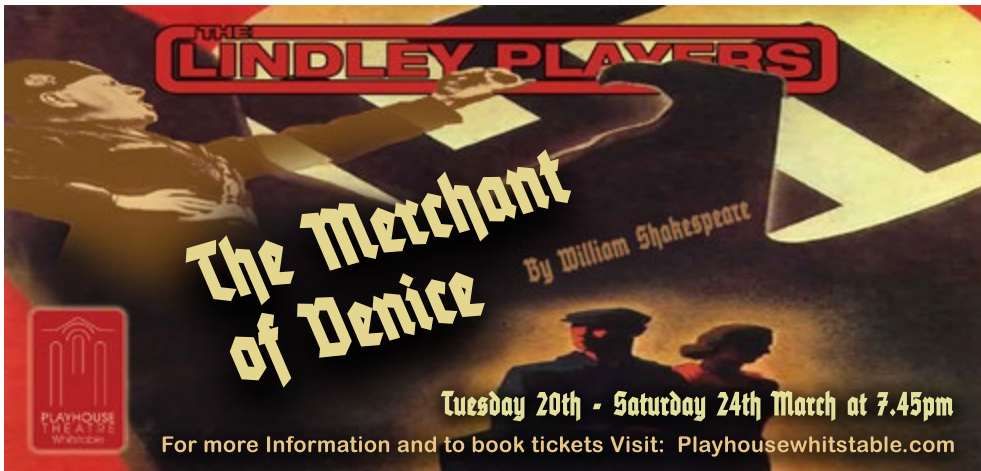
[www.dotkids.co.uk](https://www.dotkids.co.uk)

don't forget to  
visit our super  
**SHOP**



Pop into **THEHORSEBRIDGE** shop to find **ceramics**, t-shirts, **prints**, cards and a lot more all created by talented **local artists**. We are also stockists for the incredible **Djeco** range, a rarity of high quality at fantastic prices.

And your purchases will directly support the centre and local artists. The **gifts** that keep on **giving**.



## room hire

The Centre is on three floors, all of which are serviced by the lift and offer accessible space for disabled people. Our reception is permanently staffed to welcome and assist visitors and the cafe with balcony area provides refreshment throughout the day.

Room Name	Hourly Rate	Daily Rate	Sea View	Air Conditioning	Room Dimensions	Floor Area	Theatre Seating Capacity	Boardroom Seating Capacity	Standing Capacity
The Hub	£15.00	£90.00	No	Yes	6.3x7.9m	49m <sup>2</sup>	40	24	45
Workshop 4	£12.00	£60.00	No	No	3.5x7.9m	27m <sup>2</sup>	20	16	30
Workshop 3	£12.00	£60.00	Yes	No	3.5x6m	21m <sup>2</sup>	16	8	20
Workshop 5	£12.00	£60.00	Yes	No	3.5x6m	21m <sup>2</sup>	16	8	20
Performance Space Monday-Friday Saturday & Sunday*	£17.50 £25.00	-	No	Yes	9.5x12m	114m <sup>2</sup>	150	50	240

\*9am to 6pm only

Phone **01227 281174** or email [info@thehorsebridge.org.uk](mailto:info@thehorsebridge.org.uk)

## advertise here

Book for one year and only pay for nine months.

This programme has a print run of 7,000.

It is distributed to local businesses, libraries, and to the book bags of all children in nine local schools.

An advert in our programme represents excellent value for money and helps us continue to serve the local community.

**Quarter page**  
62mmx62mm

**Full page**  
130mmx130mm

**advertise here**

**Half page**  
130mmx62mm

# have you made **friends** with us yet?

The Horsebridge Centre extends a warm welcome to more than 100,000 visitors annually.

It is open seven days a week, closing only over Christmas/New Year, and provides class space for tutors, meeting rooms for the community, and a cafe as well as a rolling programme of art exhibitions in two galleries and creative workshops, lectures and film screenings.

We receive very little public funding, so have to be largely self-financing through ticket sales, room hire and merchandise. It is our dearest wish to one day create surplus funds to allow us to improve the centre for our community.

If you value the Horsebridge, would you consider becoming our Friend? For £20 a year (£30 for joint membership and there are concessions too) we offer discounts in our on-site shop and our fantastic cafe.

Please talk to our reception staff about the Friends scheme or sign up on our website [www.horsebridge-centre.org.uk](http://www.horsebridge-centre.org.uk). THANK YOU!

# horsebridge café

The Horsebridge Café is open 7 days a week serving hot and cold drinks, **delicious cakes**, light bites and **lunches**, to eat in or take-away.

For **younger visitors** we have a selection of snacks, sandwiches and drinks which can be enjoyed in our **Kids Corner**.

Free **Wifi**.

Horsebridge  
**friends** receive **15% discount**.

Profits from the café go to the Horsebridge, helping **secure the future** of the centre.



# Opening Hours



## The Horsebridge Centre

Mondays to Saturdays 9am - 6pm  
(Later for classes and events)

Sundays 10am - 5pm

## The Horsebridge Cafe

Mondays to Saturdays 9am - 4.30pm  
Sunday 10am - 4pm

The Horsebridge Centre is a charity  
Charity number: 1099570



thehorsebridge



@horsebridge



thehorsebridge

info@thehorsebridge.org.uk

www.horsebridge-centre.org.uk

11 Horsebridge Road, Whitstable, Kent, CT5 1AF

# 01227 281174