

THE HORSEBRIDGE ARTS CENTRE

WHAT'S ON
APRIL **JUNE** 2019





Copperfields
OF WHITSTABLE

Cookshop & Gifts Since 1956

Inspiration for your kitchen and home

Cookware • Homeware • Gifts • Bakeware • Furniture • Electrical • Cards

shop@copperfieldsofwhitstable.co.uk • www.copperfieldsofwhitstable.co.uk

Open 7 days a week • 93-95 High St • Whitstable • Kent • CT5 1AY • Tel: 01227 273519



FLOW & CO

BEAUTIFUL HAIR.
NATURALLY.

Present this advertisement & receive
a 10% discount on your first service

01227 271 225

3 Horsebridge Road, Whitstable, CT5 1AF
www.flowandco.co.uk    flowandcohair

betty loves bryan

Contemporary art, homeware and clothes

And THE place to buy Breton stripes!

108 High Street, Whitstable, Kent CT5 1AZ

01227 271001 / 07788 910115

bettylovesbryan@btconnect.com • www.bettylovesbryan.com



Follow us on Twitter
@lizziedesign



Like us on
Facebook



Follow us on Instagram
@betty_loves_bryan

OPENING HOURS

Mondays to Saturdays 9am - 5pm
open later for booked classes and events

Sundays 10am - 4pm

The Cafe closes 30 minutes before
the centre.

BOOK TICKETS

book online at
horsebridge-centre.org.uk/tickets

or by phone on
01227 281174

11 Horsebridge Road,
Whitstable, Kent. CT5 1AF
info@thehorsebridge.org.uk



@thehorsebridge



@horsebridge

front cover image of
Small Fortunes by Frazer Doyle
Horsebridge Open 2019
People's Choice Award winner

Charity number : 1099570

12 shop local



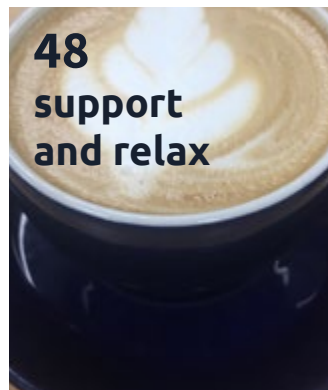
22 explore your creative side



36 family art fun



48 support and relax



WELCOME SPRING

Over the next few months we have some really exciting projects coming up for young people. We have been awarded a grant from the Young Roots Heritage Lottery Fund to run a year long project, providing a wonderful opportunity to connect young people with a fascinating and unique aspect of their local history; Whitstable Pudding Pans.

In an area now known as Pudding Pan Rock, 3 miles off the coast of Whitstable, it is believed that a Roman ship carrying Samianware pots was shipwrecked. Over time, these pots have been caught in fishermen's nets and used by their families to make a special kind of local pudding, becoming locally known as Pudding Pans. We are working with Canterbury Archaeology Trust and Whitstable Community Museum Trust to highlight the history of these pots, by providing a programme of heritage and artistic activities, designed by young people. We will work with local schools and youth groups and will be hosting over 40 FREE workshops in August for 11 – 15 year olds. Look out for details in our next brochure.

Our Young Digital Makers Project funded by the National Lottery Community Fund runs until December and sees more young people taking part in animation and digital photography workshops.

Our regular Young Makers Club, Parent and Toddler Messy Play and school holiday workshops also continue to grow, and fill our centre with children printing, weaving, painting and creating.

Liz Daone
Centre Director

CONTENTS

- 07 **15 years of HORSEBRIDGE**
- 08 **Films**
- 11 **Talks**
- 12 **Shop**
- 13 **Clubs and Groups**
- 15 **Exhibitions**
- 22 **Adult Workshops & Classes**
- 34 **Child & Family Activities**
- 43 **Write Mind**
- 44 **Repair Cafe**
- 47 **Become a Friend**
- 48 **Cafe**

SUPPORTED BY





Local fish from
Whitstable Harbour

Classic **French** Cuisine

Opening Times:

Lunch

Tues - Sun 12.00/2.30

Evenings

Tues - Mon 6.00/9.30

41 Harbour Street
Whitstable, Kent CT5 1AH
For reservations telephone:
01227 265337

A big **HORSEBRIDGE** thank you
to the wonderful

Birdies Restaurant

for hosting and supporting
our Christmas lunch for the
Horsebridge volunteers and staff.

It was lovely to be able to treat
the people who work so hard and
provide so much support to the
centre throughout the year.

A fantastic time and delicious
meal was had by all.



THE **HORSEBRIDGE** **ARTS** CENTRE

15 YEARS

10 APRIL 2019

Since opening our doors to our centre on 10th April 2004

we have welcomed over **1.2million** visitors

held more than **32,000** classes & workshops

hosted over **950** exhibitions

served **200,000** hot drinks in our cafe

seen the arrival of **5** (soon to be 6) Horsebridge babies

and survived **1** fire!

Our wonderful volunteers have given more than **23,460** hours over the years
to help our dedicated staff team, **2** of which have worked at the centre since the very
first day. **3** members of staff have even returned to the Horsebridge after leaving!

We've gratefully received **£29,167** in donations from members of the
public, which directly helps fund the work of the centre. **THANKYOU**

Tickets: £5 Earlybird £4

Our Thursday **M** Matinee film screenings are as much a social occasion for many as they are a chance to watch the film. Every matinee screening includes **free tea or coffee and biscuits**.

We are now expanding the times of our film programme to include special Friday evening screenings.

We are also running Sunday afternoon matinees, with a focus on historical and contemporary creative figures. Tea or coffee available for £1 (on Sundays only)

APRIL

M Finding Your Feet (2017)
Thursday 25 April 2pm

When 'Lady' Sandra Abbott (Imelda Staunton) discovers that her husband of forty years is having an affair with her best friend, she seeks refuge with her estranged, bohemian, older sister Bif (Celia Imrie). A comical and touching journey of renewed passions and friendship.

1hr 50mins Cert 12A
Earlybird price: book by 11 April.



MAY

Maudie (2016)
Sunday 12 May 2pm

Based on a true story of the life of Canadian folk artist Maud Lewis, 'Maudie' is an unlikely romance in which the reclusive Everett Lewis (Ethan Hawke) hires a fragile yet determined woman named Maudie (Sally Hawkins) to be his housekeeper.

1hr 55mins Cert 12A
Earlybird price: book by 28 April.



M On Chesil Beach (2017)
Thursday 23 May 2pm

Florence (Ronan) and Edward (Howle) are just married and honeymooning on the dramatic coastline of Chesil Beach in Dorset. However, the hotel is old fashioned and stifling, and underlying tensions between the young couple come to the surface.

1hr 50mins Cert 15
Earlybird price: book by 9 May.



JUNE

A Star is Born (2018)
Friday 7 June 7pm

Bradley Cooper directs and stars as seasoned musician Jackson Maine, who discovers - and falls in love with - struggling artist Ally (Gaga). She has just about given up on her dream to make it big as a singer... until Jack coaxes her into the spotlight.

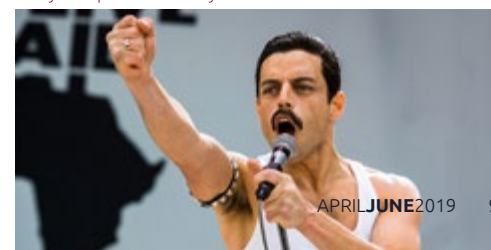
2hrs 15mins Cert 15
Earlybird price: book by 24 May.



M Bohemian Rhapsody (2018)
Thursday 20 June 2pm

'Bohemian Rhapsody' is a foot-stomping celebration of Queen, their music and their extraordinary lead singer Freddie Mercury, who defied stereotypes and shattered convention to become one of the most beloved entertainers on the planet.

2hrs 14mins Cert 12A
Earlybird price: book by 6 June.





THE WOMAN WHO COOKED HER HUSBAND
BY DEBBIE ISITT

15th – 18th May 2019 | 7:45PM

WARNING: NOT SUITABLE FOR CHILDREN
BOX OFFICE: 01227 272042
WWW.PLAYHOUSEWHITSTABLE.CO.UK
LINDLEY PLAYERS



samson & coles Ltd
Modern British Jewellery Gallery

Bespoke Design Commissions Repairs

13 Oxford St, Whitstable, CT5 1DB 01227 277985
Opening hours: Tues - Sat 10.30am - 5.00pm



sa spacemaker architects

Want to improve your existing space?
Book a one hour no obligation consultation with us for your £40 donation to the Horsebridge Centre.
You'll have some new ideas and the Horsebridge will be £40 better off.

Tweet us @spacemakerarch or call Louisa on 07846 851694.
www.spacemakerarchitects.co.uk

ART TALKS

This season sees the introduction of *Art Decades*, a new series of lectures alongside our established *Art Talk* programme.

Art Decades reflects the artistic ethos of Whitstable's vibrant music scene, this new series examines art's pervasive influence on rock. *Art Decades* will include stunning imagery and fantastic music – as well as original artwork, some by famous names, never exhibited in public till now.

Art Talks, also returns with an evening of lectures by Hephzibah Llewellyn Jones. Images and artefacts are used to explore different facets of art and culture through the centuries in this special 2-part presentation.

Booking is recommended and refreshments are provided.

APRIL

Art Decades 1960s: Pop Art & Beyond
Wednesday 10 April 7 - 8.30pm

This decade is seen as the high watermark for Pop Art, but what other currents in art influenced the likes of The Beatles or Pink Floyd, and coursed through the music community at large?

Tickets: £7

tickets: horsebridge-centre.org.uk/tickets or 01227 281174

MAY

Art Decades 1970s: For Your Pleasure
Wednesday 15 May 7 - 8.30pm

In artistic terms, arguably an even more kaleidoscopic decade than its predecessor: so what prompted the riots of colour, full-blown fantasy and incursions into high (and low) art by Bowie, Eno, The Sex Pistols etc.

Tickets: £7

Art Talk with Hephzibah Llewellyn Jones
Wednesday 29 May 7 - 9pm

Join Hephzibah for an evening of talks and discussion with this special two-part presentation.

Part 1. The Black Figure in Art - A look at how the black figure is portrayed across the centuries and continents, the social context and the power of portrayal.

Part 2. From Asia to Latin America - How artefacts travelled by galleon from Manila to Acapulco and how this enriched both continents.

Tickets: £8 in advance £10 on the door

JUNE

Art Decades 1980s: How Soon Is Now?
Wednesday 12 June 7 - 8.30pm

How fine art conceptualism influenced post-punk and independent music and helped forge the art-rock brand, accompanied with complex, striking and immediate music and imagery, exemplified by the work of PiL, New Order, The Smiths and more.

Tickets: £7

APRIL JUNE 2019 11

HORSEBRIDGE SHOP

Visit our shop for a range of cards, prints, ceramics, glassware, homeware, bags, t-shirts, accessories and craft kits for kids. We aim to stock work that is designed and made locally and sustainably. We are also stockists for Selfie Clothing a super cool range of colour in t-shirts and caps for children.

Your purchases will directly support the centre and local artists. **HORSEBRIDGE FRIENDS** receive a 10% discount in the shop, find out more on page 47.



MEET THE MAKER

Our shop is stocked with fantastic products by local creatives and in our brochure we'll be introducing you to them and their products.

Heather Mathieson is a potter and print maker. Her background is in ecology and her passion for nature, wilderness and the outdoors hugely influences her work. Her stoneware mugs, pots, plates and dishes with linocut bees, butterflies and dragonflies are a firm favourite in the shop.

New in the shop are cards, notebooks and mirrors by Katy Chambers. Katy is a textile print designer and maker who uses hand drawing, embroidery and mixed media to create unique and beautiful designs

which she uses on stationary, homeware and accessories. We love that she's working towards using 100% plastic free packaging too.



Fishslab Gallery
11 Oxford Street
Whitstable

 Fishslab Art Gallery
 @fishslab1



Art Gallery
www.fishslabgallery.co.uk

CLUBS GROUPS

Get involved in the clubs and groups that meet at **THE HORSEBRIDGE**

COMIC CLUB

One Thursday a month **18+**
11 April, 9 May, 13 June 7 - 9pm

A great monthly club for lovers of comics and graphic novels — a heady mix of industry professionals and fans of the artform.

Have a beer and read great, inspiring, new or vintage graphic fiction.

£4 to join, £2 thereafter



SUNDAY ART TALKS CLUB

Sundays
Contact Hephzibah for dates

Join Hephzibah for monthly round table discussions to exchange thoughts on any area of artistic practice of personal interest. Participants are encouraged to bring books, ideas and objects for an informal group session of looking at art.

hephzibahllewelynjoness@aol.com



MARGO SELBY

Bradstowe House | 35 Middle Wall
Whitstable, Kent CT5 1BJ
01227282758

Woven Textiles & Original Artworks

—
Visitors Welcome
Weaving Studio & Shop
Monday - Friday (excl. Bank Holidays)
10am-4pm

—
For our online store, events and weaving
workshops visit:

margoselby.com

Chappell CONTEMPORARY

ART GALLERY

30 Oxford Street
Whitstable
chappellcontemporary.com
01227 637329

Specialising in Limited edition
Prints and Contemporary Originals



GALLERY EXHIBITIONS

Our galleries offer a diverse and dynamic exhibition programme throughout the year. They serve as a platform to showcase work from a wide range of artists as well as art, heritage and community projects curated by The Horsebridge.

The galleries are free to visit and are open to public every day apart from the first and last day of the exhibition dates which are dedicated installation and de-installation days.

27 March - 5 April



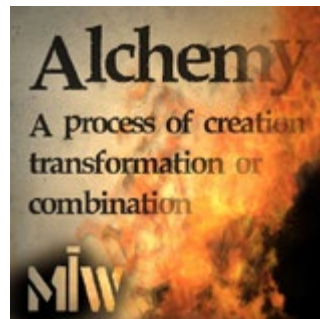
Prints Only
Art4site

Fine Art printers Art4site are hosting an exhibition of giclée prints, together with a pop-up print studio. Their 1st Spring Exhibition will feature more than 70 established and emerging artists.

Cliff Wright, well known for his work on 2 of the Harry Potter book covers, will also be running a NATURE OF SEEING drawing workshop on Sunday 31st March during Art4site's Prints Only exhibition, with limited spaces available. Tickets cost £25 for a two hour session, or £18 for Children age 10+. 10.30 am – 12.30 pm or 2pm – 4pm.

To book call Art4site on 01233 807777.

7 April - 23 April



Alchemy
Made in Whitstable

Eighteen artists explore themes of process, creation and transformation.

A thought provoking and wide ranging show.

GALLERY EXHIBITIONS

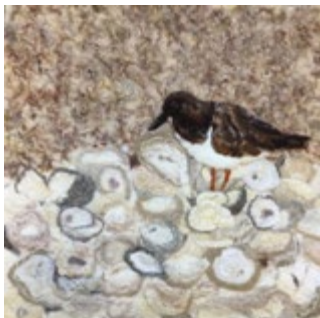
7 April - 23 April



Watercolour Let Loose
Jackie Trinder

Jackie works in watercolour and mixed media. Her inspiration is flora, fauna and landscape. She works with loose, transparent and vibrant colours, working with 'visual adjectives' rather than 'visual nouns'

24 April - 7 May



Earth To Art
Irene Southon, Sue Morton,
Lindsay Wilkinson

Three artists explore the colours and textures of the Whitstable coastline using their expertise in glass, ceramics and feltwork.

25 April - 6 May



People, Places and Peculiarities
Higham Studios

This group exhibition of Paintings in mixed media, Sculpture and Ceramics feature a wide range of subject matter, including portraits, figures landscape and abstract work.

Learn more about printing with pattern and colour with our **HORSEBRIDGEARTS** creative workshop for adults on Monday 22 April. You will be able to print or paint your own tote bag during this 1.5 hour session for just £7 including a hot drink. Find out more about our workshops on page 22.

GALLERY EXHIBITIONS

8 May - 21 May



35 years of visual art at Rochester Independent College

This exhibition celebrates the art and design produced by students and staff at Rochester Independent College over the past 35 years.

10 May - 12 May



South East Stories
Film Hub South East

The Horsebridge presents a weekend of short film.

Curated by Film Hub South East and selected from close to 100 submissions, this programme of ten short films tell cinematic stories that linger in the mind, challenge your perceptions and transport you to seaside towns and bustling cities while introducing an array of exciting emerging filmmakers.

Full programme approx. 75 mins.
Cert 15

Image still taken from film Nailman, directed by Jack Marti.

14 May - 21 May



The Camera obscura
HORSEBRIDGEARTS

Experience this natural optical phenomenon as Gallery 2 is transformed into a huge Camera Obscura.

Open one of a series of small apertures to reveal a very familiar scene, reversed, inverted and projected through tiny pinholes into the darkened room.

Alchemy

EIGHTEEN ARTISTS EXPLORE THEMES OF PROCESS
CREATION AND TRANSFORMATION

Horsebridge Arts Centre
7th - 23rd April 2019



Made in Whitstable
FB: Made in Whitstable
Hut 23 Harbour Village

GALLERY EXHIBITIONS

22 May - 4 June



Heritage
Canterbury Society of Art

Our members will provide provoking diverse artwork in a range of media exploring the theme of Heritage and reflecting the wide variety of heritage in the local community.

22 May - 4 June



The Whitstable Seaside Guide
HORSEBRIDGEARTS

The Horsebridge has commissioned local artist Laura Watson (creator of the popular Whitstable Colouring book) to illustrate and design a Whitstable Seaside Guide. The guide will be interactive, fun and informative and will include a 'treasure hunt' element to encourage users to explore the shoreline to identify specific plants, shells and sea creatures. Laura's work for the guide will be on show.

5 June - 18 June



'Never Ending Story'
Whitstable Art Society

'Never Ending Story' follows the successful 2018 exhibition curated by the society - 'The Road Not Taken'.

Multimedia work will be on show, with information from exhibitors about their journey to this point with their art.

Inspired by the Whitstable Seaside Guide exhibition, explore how to collage, draw, paint and print the seaside in our May half term workshops for children. Sessions are £3 or two children can come for £5. All the details of our children and family sessions start at page 37.



An open-air showcase of locally-created, British made, premium and hand-crafted goods and fine art. Micro eateries serve a mouth watering variety of food. Set in the working harbour of Whitstable.

Open every weekend (weather permitting) and 5 days a week during the summer.
Pop-up Huts available to rent.

www.harbourmarketwhitstable.co.uk



GALLERY EXHIBITIONS

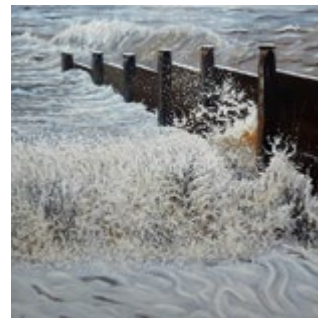
5 June - 18 June



Small Print
HORSEBRIDGEARTS

This collective exhibition curated by The Horsebridge celebrates all forms of print, reproduced in a small format. Small Print includes framed prints, editions and cards which show the diverse range of styles that this art form enables and provides a showcase for individual artists and their practice.

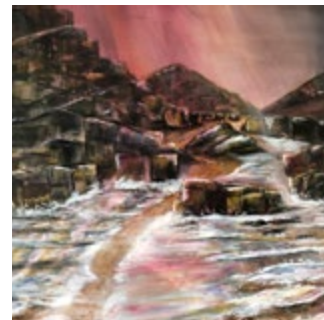
19 June - 2 July



Broken by Light
Gaven Alexander

Gaven Alexander works with detail and light. He has produced a collection of paintings showing the world around us, where light is his source of inspiration.

19 June - 2 July



Reflections Of The Self
Caroline Anderson

Caroline Anderson is a creative arts psychotherapist and a sky seascape artist. The influence of her life on Sark runs throughout her work. This is her second exhibition at the Horsebridge.

CALL FOR ARTISTS

Our Small Print exhibition is looking for submissions from Printmakers (any print form other than Digital or Giclee). Print image must not exceed 30 x 30 cm. Call closes on 15 May 2019. See horsebridge-centre.org.uk/smallprint for full details.

THE HORSEBRIDGE ARTS CENTRE CREATIVE WORKSHOPS for adults

Mondays
monthly
10 to 11.30am

A new programme of creative activities designed around making and crafting. Learn different techniques, enhance your creative skills and craft a small project to take home each time. £7 per person which includes a free hot drink.

22 APRIL Tote Bag Printing and Painting

20 MAY Recycled Block Printing

17 JUNE Life Casting – Hands

ADULT WORKSHOPS

Sing for your Sanity! with Laure Meloy

2-3pm
Saturday 6 April, 4 May, 8 June

Have you always wanted to sing but afraid to try? This workshop is for you! Singing has been proven to improve health...come along and see what it can do for you. £10 (£5 concession.) Places limited, so booking is recommended.

CONTACT: 07769838790 femmelunaproductions@aol.co.uk

HORSEBRIDGE ARTS Creative Workshops with Nicola Priest

10-11.30am
Monday 22 April, 20 May, 17 June

A programme of creative activities designed around making and crafting. Learn different techniques, enhance your creative skills and craft a small project to take home each time.

CONTACT: 01227 281174 horsebridge-centre.org.uk/tickets

Working with Your Feet with Rossella Buono

10am-12.30pm **Sunday 7 April**

Whether you have problems with your feet, or you want to keep them happy, this workshop is for you. It gives you a chance to learn about the anatomy of the foot, exercises to improve function and flexibility. Absolute beginners welcome! Please wear comfortable clothes and bring a yoga mat and your heels, shoes or boots, if you want.

CONTACT: 07717 553022 rossella@rossellabuono.com

Working with Your Voice with Rossella Buono

10am-12.30pm **Sunday 5 May**

This workshop explores the habitual tensions we carry around with us, our reactions to stress, performance anxiety and pain, and what those things “do” to our bodies and to our voice. We’ll look at lots of practical tips and tools to manage and understand our habits and reflexes better. All abilities and levels of experience. Absolute beginners are welcome! Please wear comfortable clothes and bring a yoga mat and a few small books to put under your head. Booking is strongly recommended to ensure a place.

CONTACT: 07717 553022 rossella@rossellabuono.com

Creative Concertina Sketchbooks Workshop with Karen Stamper

10.30am-4pm
Saturday 22 June, Sunday 23 June

A fun workshop in a supportive creative environment. You will prepare your pages with inks, pens, pencils, print and collage on the theme of boats/harbour. Following this we will draw and make marks from direct observation in Whitstable harbour and develop the pages back in the classroom.

CONTACT: kestamper@yahoo.com

ADULT CLASSES

There are many activities regularly taking place in the centre. Unless indicated these are not run by the Horsebridge so please use the contact information to contact the class tutors directly for any queries or to book.

Some classes only run during term time or have specific start dates, so please make sure you check before turning up.

You can find more information about all of the classes at horsebridge-centre.org.uk/ classes or by contacting the tutors.

- art
- craft
- dance & fitness
- languages
- mind & body
- theatre
- well-being

MONDAY

■ Spanish Intermediate Conversation

with Kent Adult Education
10am-12pm
www.kentadulthoodeducation.co.uk

■ HORSEBRIDGEARTS Creative Workshops

with Nicola Priest
10-11.30am fortnightly
horsebridge-centre.org.uk/tickets

■ Yoga Basics

with Bernadette Fisher
5.45-6.45pm
www.bernadettefisheryoga.co.uk

■ Pure Pilates

with Sharon Saker
Evenings
07970 258527

■ Groove Class

Michelle Gilbert
7-8pm
07908 184104

■ Kent Coast Theatre (KCT)

with Lou Fowkes
7-9pm
info@kentcoasttheatre.co.uk

TUESDAY

■ Hatha Yoga

with Linda Thompson
10-11.30am
yogajoyful@gmail.com

■ Italian Beginners Plus

with Kent Adult Education
1-3pm
www.kentadulthoodeducation.co.uk

■ Vinyasa Yoga

with Monica Marini
1-2.15pm
momoiah@yahoo.com

■ Yoga

with Emma Epton
6.30-7.30pm
whitstablecommunityyoga@gmail.com

WEDNESDAY

■ Bead'n Banter

with Jayne Johnson
10am-12.30pm
first Wednesday of the month
www.rainbowcollection.co.uk

■ Callanetics Exercise Method

with Jennifer Watson
10-11am
watsonjennifer16@gmail.com

■ Heart Centred Yoga UK

Beginner yoga
1-2.15pm
heartcentredyogauk@gmail.com

ADULT CLASSES

■ Pilates

with Stephanie Fancy
6.30-7.30pm Intermediate
7.30-8.30pm Beginners
www.facebook.com/fancypilates

THURSDAY

■ Hatha Yoga

with Linda Thompson
10-11.30am
yogajoyful@gmail.com

■ Adult Spanish Improvers Group

with Kent Spanish Speak
10-11.15am
www.kentspanishspeak.co.uk

■ French Intermediate Parlon Français

with Kent Adult Education
11.30am-12.30pm
www.kentadulthoodeducation.co.uk

■ Tai-Chi

with Christine Hopper
12.30-1.30pm
christinehopper@talktalk.net

■ French Advanced

with Kent Adult Education
1-3pm
www.kentadulthoodeducation.co.uk

■ Flamenco Dance

with Charlotte Baynes
5.15pm-6.15pm Mixed level
charlottebaynes.com

■ Body Control Pilates

with Alison Cobley
7-8pm Mixed ability
www.pilateswithalison.net

FRIDAY

■ Ballet & Contemporary Dance

with Rosita Yarboy
10-11am
www.reachperformance.co.uk

■ Adult Tap Dance

with Rosita Yarboy
11am-12pm
www.reachperformance.co.uk

■ Tankerton Bay Art

with Sarah Holliday
2-4pm, contact for dates
sarah2mike@yahoo.co.uk

SATURDAY

■ Yin Yoga

with Emma Epton
9.15-10.15am
whitstablecommunityyoga@gmail.com

■ Diva Bollywood Dance Class

with jasmin deSylva-Smith
10.30-11.30am
jasmin@my-energise.co.uk

■ Yoga Drop-in

with Bernadette Fisher
11.45am-12.45pm
www.bernadettefisheryoga.co.uk

SUNDAY

■ Life Drawing

with Ron Freeman
2-4pm alternate Sundays
rgcfreeman@aol.com

■ Slow Stitch

Yvonne Fuchs
2-4pm starts 14 April
second Sunday of the month
fuchsy141@hotmail.com

■ Art Talks Club

with Hephzibah Llewellyn-Jones
Contact for dates
hephzibahllewellynjones@aol.com

BY APPOINTMENT

■ Life Coaching and Therapy

with Suzi Tyler
Book an appointment at any time
www.rapid-health.co.uk

COME AND EXPLORE THE WIDE RANGE OF EVENTS THE UNIVERSITY OF KENT HAS TO OFFER!



www.kent.ac.uk/events

University of
Kent

ADULT CLASSES

■ Art

Tankerton Bay Art with Sarah Holliday

Contact for dates

Friday

A weekly art session to cover all aspects of drawing and painting, and more importantly, looking! Aimed at beginners and improvers. You will be amazed how quickly your confidence and skills grow.
CONTACT: 07949 364710 2paint.sarah@gmail.com

Life Drawing with Ron Freeman

2-4pm

Sunday

Alternate Sundays, 14 April – 7 July. If you would like to join these informal sessions, please speak to Ron.
CONTACT: 07749 835036 rgcfreeman@aol.com

Art Talks Club with Hephzibah Llewellyn-Jones

Contact Hephzibah for dates

Sunday

Monthly round table discussions, to exchange thoughts on any area of artistic practice of personal interest. Participants are encouraged to bring books, ideas and objects for an informal group session.
CONTACT: 07763 016941 hephzibahllewellynjones@aol.com

■ Craft

Bead 'n Banter with Jayne Johnson

10am-12.30pm Wednesday

First Wednesday of the month. Bring beadwork and exchange tips, with monthly raffle and quarterly challenges.
CONTACT: 01227 265293 gillgoldfinch@btinternet.com www.rainbowcollection.co.uk

Slow Stitch with Yvonne Fuchs

2-4pm

Sunday

Starts 14 April. Second Sunday of the month, 8 sessions excluding August.
CONTACT: fuchsy141@hotmail.com

■ Dance and Fitness

Groove Class with Michelle Gilbert

7-8pm

Monday

Dance. Connection. Community. Creativity. 'Groove' is a fun, inspiring, empowering dance/ fitness class for all ages and abilities.
CONTACT: 07908 184104

ADULT CLASSES

Callanetics® Exercise Method with Jennifer Watson **10-11am Wednesday**

Lose at least one dress size in 10 hours! Safely strengthen your whole body, especially core and pelvic floor, and dramatically improve your posture.

CONTACT: 07966 731323 watsonjennifer16@gmail.com www.callanetics-canterbury.co.uk

Flamenco Dance with Charlotte Baynes **5.15-6.15pm Thursday**

Mixed Level. Enjoy an exciting array of Flamenco styles such as Alegrias, Bulerias, Guajiras + more. Charlotte is a highly experienced and inspired teacher within the arts. Ideally, wear shoes with a firm heel.

CONTACT: 07906 685109 charlottecadiz@yahoo.co.uk charlottebaynes.com

Ballet & Contemporary Dance with Rosita Yarboy **10-11am Friday**

For adults, run by Reach Performing Arts.

CONTACT: 01227 369891 reachacademy@sky.com www.reachperformance.co.uk

Adult Tap Dance with Rosita Yarboy **11am-12pm Friday**

Run by Reach Performing Arts.

CONTACT: 01227 369891 reachacademy@sky.com www.reachperformance.co.uk

Diva Bollywood Dance Class with Jasmin deSylva-Smith **10.30-11.30am Saturday**

An hour to let your inner Diva out! A sneaky work out for your mind and body, it's fun to follow, simple routines. Everyone welcome.

CONTACT: 07761 199179 jasmin@my-energise.co.uk

Languages

Spanish Intermediate Conversation with Kent Adult Education **10am-12pm Monday**

CONTACT: 03000 412222 www.kentadulteducation.co.uk

Italian Beginners Plus with Kent Adult Education **1-3pm Tuesday**

CONTACT: 03000 412222 www.kentadulteducation.co.uk

Adult Spanish Improvers Group with Kent Spanish Speak **10-11.15am Thursday**

For those with a basic knowledge of Spanish wishing to improve their vocab, sentence structure and use of the language in an enjoyable manner. Focusing on conversation in a relaxed and friendly group class atmosphere.

CONTACT: 07814 852111 kentspanishspeak@gmail.com www.kentspanishspeak.co.uk

ADULT CLASSES

French Intermediate Parlons Français with Kent Adult Education **11.30am-12.30pm Thursday**

CONTACT: 03000 412222 www.kentadulteducation.co.uk

French Advanced with Kent Adult Education **1-3pm Thursday**

CONTACT: 03000 412222 www.kentadulteducation.co.uk

Mind & Body

Yoga Basics with Bernadette Fisher **5.45-6.45pm Monday**

Classical Hatha Yoga for those new to yoga, returning, or seeking a slower class.

CONTACT: 07739 302870 bernadetteanne@aol.com www.bernadettefisheryoga.co.uk

Pure Pilates with Sharon Saker **Evenings Monday**

Tone, sculpt, stretch and breathe... all levels welcome. Just bring a mat and wear comfortable clothing.

CONTACT: 07970 258527

Vinyasa Yoga with Monica Marini **1-2.15pm Tuesday**

A dynamic and energising practice open to those with a more developed Yoga practice and/or a good level of stamina. These classes are defined by principles of Vinyasa Krama (intelligent sequencing) and include exploration of alignment, arm balances and the practice of inversions.

CONTACT: 01227 273147 07913 887108 momoiah@yahoo.com

Hatha Yoga with Linda Thomson **10-11.30am Tuesday 10-11.30am Thursday**

A space during the busy and often stressful week for you to stretch in classical yoga postures. For all levels, beginners welcome.

CONTACT: 07516 494300 yogajoyful@gmail.com

Yoga with Emma Epton **6.30-7.30pm Mixed Level Tuesday**

Yoga Alliance UK registered teacher. Emma is also pregnancy yoga trained.

CONTACT: 07891 454450 whitstablecommunityyoga@gmail.com

Heart Centred Yoga UK **1-2.15pm Wednesday**

Beginner Yoga. Yoga Poses, meditation and breathing practice followed by a blissful relaxation.

CONTACT: 07955 850215 heartcentredyogauk@gmail.com

MERIDIAN

Meridian are inline with all your Mortgage Needs

We recommend from the whole of the market and offer a FREE no obligation initial consultation



- Mortgages
- Remortgages
- Buy to Let Mortgages
- Bridging Loans / Fast Finance
- Secured Loans
- Home Insurance
- Life Assurance
- Critical Illness
- Income Protection

Meridian Consultants

50 - 52 Oxford Street, Whitstable, Kent CT5 1DG

Call us today on **01227 26 66 88**

info@meridian-mortgages.co.uk

YOUR HOME MAY BE REPOSSESSED IF YOU DO NOT KEEP UP REPAYMENTS ON YOUR MORTGAGE.

Meridian is a trading style of Rosemount Financial Solutions Ltd who are an appointed representative of Intrinsic Financial Planning Limited (Registered in England 5372217) and Intrinsic Mortgage Planning Limited, which are authorised and regulated by the Financial Conduct Authority. Intrinsic Financial Planning Ltd and Intrinsic Mortgage Planning Limited are entered on the FCA register under reference 440703 and 440718.

ADULT CLASSES

Pilates with Stephanie Fancy

6.30-7.30pm Intermediate **Wednesday**
7.30-8.30pm Beginners **Wednesday**

Both classes for men and women. Strengthen your body, mind and spirit.

CONTACT: 07890 897851 stephaniefancy@gmail.com www.facebook.com/fancypilates Instagram: fancypilates

Tai-Chi with Christine Hopper

12.30-1.30pm **Thursday**

T'ai Chi Ch'uan style is the traditional Yang form. When practiced regularly T.C.C brings noticeable improvement at physical, energetic, and emotional levels. The health benefits of a serious practice are rapidly felt in daily life. Booking essential.

CONTACT: christinehopper@talktalk.net

Body Control Pilates with Alison Cobley

7-8pm Mixed Ability, beginners welcome **Thursday**

Practice pilates regularly and your body will become stronger, toned and more flexible. Suitable for people of all ages and levels of fitness. Small class sizes - maximum 12 participants.

CONTACT: 07903 010816 alisonpilates@aol.com www.pilateswithalison.net

Yin Yoga with Emma Epton

9.15-10.15am **Saturday**

Yin Yoga targets the deep connective tissues of the body. Connecting to the meridian lines in the body and encompasses Daoist principals and traditional yoga.

CONTACT: 07891 454450 whitstablecommunityyoga@gmail.com

Yoga Drop-in with Bernadette Fisher

11.45am-12.45pm **Saturday**

Classical Hatha Yoga Visitors and new students always welcome - call if you'd like me to bring a mat.

CONTACT: 07739 302870 bernadetteanne@aol.com www.bernadettefisheryoga.co.uk

■ Theatre

Kent Coast Theatre (KCT) with Lou Fowkes

7-9pm **Monday**

Engaging community & inspiring potential, KCT is a community theatre company based at the Horsebridge. Productions and acting workshops throughout the year for adults 16+.

CONTACT: 01227 280314 info@kentcoasttheatre.co.uk www.kentcoasttheatre.co.uk

■ Well being

Life Coaching and Therapy with Suzi Tyler

Book an appointment **anytime**

Suzi Tyler, Breakthrough Session with Hypnotherapy, NLP & EFT Matrix Re-imprinting. CNHC & BIH Registered. Clear hidden limits that spoil your health & happiness. Specialism: Panic Attacks.

CONTACT: 07836 635233 www.rapid-health.co.uk

Please book direct with class tutors. More information on horsebridge-centre.org.uk/classes

APRIL/JUNE 2019 31



Would you like to be a part of our theatre?

The Playhouse Whitstable is run entirely by volunteers, members of The Lindley Players. We have plenty of opportunities to get involved (on stage and off!) and we are always looking for new members!

We are open every Saturday morning 10am-noon for new members to join, get to know more, or have a tour around the theatre. Just turn up!

LINDLEY PLAYERS

Playhouse Whitstable, 104 High Street, Whitstable, CT5 1AZ
01227 272042 www.playhousewhitstable.co.uk



Liz McGown Louise Whorlow
CHIROPRACTORS

- Relieve Pain and Improve Function and Performance
- Back and Neck Pain, Headaches
- Sport Injuries, Joint Pain and Muscle Aches
- All Ages Welcome: Children, Teenagers, Adults and Elderly

EVOLUTION HEALTH 01227 273821
62 Borstal Hill
CT5 4NA

GOC Registered
British Chiropractic Association
Member of the
British Chiropractic Association



2019

YOUNG DIGITAL MAKERS

Engaging young people in digital creativity

Yes

LOOK OUT FOR WORKSHOPS THROUGHOUT THE YEAR

@ THE HORSEBRIDGE CENTRE

THE HORSEBRIDGE
ARTS CENTRE





**Hip Hop
Hooray**
take part

this
**Easter
Holiday**

THE HORSEBRIDGE
ARTS CENTRE

creative workshops
inspired by spring
for pre-schoolers
upwards

8 APRIL
Make a bunny
headband
10am - 11am
Pre-school to 6*

11 APRIL
Scrunchy
Easter chicks
10am - 11am
Pre-school to 6*

15 APRIL
Swirling
ladybirds
10am - 11am
Pre-school to 6*

18 APRIL
Bunny
thumbprint art
10am - 11am
Pre-school to 6*

**Woven Easter
baskets**
2 - 3 pm Age 6+

**Easter Egg
decorations**
2 - 3 pm Age 6+

**Origami animal
hand puppets**
2 - 3 pm Age 6+

**Crumple mini
books**
2 - 3 pm Age 6+

All workshops are **£3** for one child or **£5** for two

* Parents must be present with the pre-school to age 6 workshops

CHILDRENS CLASSES AND WORKSHOPS

There are a range of activities regularly taking place in the centre for children. Unless indicated these are not run by The Horsebridge so please use the contact information to contact the class tutors directly for any queries or to book.

Some classes only run during term time or have specific start dates, so please make sure you check before turning up.

You can find more information about all of the classes at horsebridge-centre.org.uk/classes or by contacting the tutors.

- art
- drama
- languages
- music

MONDAY

■ **Hey Diddle Music**
with Anita Memmott
9.20-10.05am 18months+ & 10.15-11am 0-18 months
nitamemmott@gmail.com

TUESDAY

■ **Musical Bumps Mixed Age**
with Kirsty Ottaway
10am 2yrs+ & 10.45am under 2yrs
www.musicalbumps.com

WEDNESDAY

■ **Baby Moonbeams, Little Moonbeams & Little Music Stars**
with Lucy Weston
10-10.40am walking to 3 years
10.50-11.30am walking to 3 years
11.40-12.20am 3 mths to walking
www.littlemusicstars.net

■ **La Jolie Ronde French for Children**
with Vicki Sullivan
4.30-5.15pm 4-6yr old
lajolieronde.co.uk

■ **Dot Kids: Children's After School Art Club**
Dot Kids
4-5.30pm 5-11 yrs (term time)
dotkids.co.uk

■ **Playtime Theatre**
with Sara Kettlewell
4-5pm 7-11yrs & 5-6.15pm 11-18 yrs
www.playtimetheatre.co.uk

THURSDAY

■ **HORSEBRIDGEARTS Parent and Toddler Messy Art Play**
with Nicola Priest
9.30-10.30am (term time)
horsebridge-centre.org.uk/tickets

■ **HORSEBRIDGEARTS Young Makers Club**
with Nicola Priest
4-5pm 6yrs + (term time)
horsebridge-centre.org.uk/tickets

SATURDAY

■ **La Jolie Ronde French for Children**
with Vicki Sullivan
9.15-9.45am 0-4 years
9.45-10.30am 8-10 years
10.30-11.15 5-8 years
11.15am-12pm 4-7 years
lajolieronde.co.uk

THE HORSEBRIDGE ARTS CENTRE

parent and toddler messy ART play

every
Thursday
9.30 to 10.30am

£3 including a child's cold drink

Our messy play group is perfect for small budding artists! All materials will be provided for an hour of creative play, no minimum age but children must be accompanied by a parent or guardian.

4th April Twirler Mobile

25th April Sunset making

2nd May Finger puppets

9th May Tie dye butterflies

16th May Mask making

23rd May Colour spinners

6th, 13th, 20th, 27th June

A series of special Oyster Parade workshops to help imagine, create and build characters that will feature in this years Oyster Festival Parade.

CHILDRENS CLASSES AND WORKSHOPS

■ Art

Parent & Toddler Messy Art Play with Nicola Priest **9.30-10.30am** (term time) **Thursday**

HORSEBRIDGEARTS Come and join artist, Nicola Priest for an hour of creative play. All materials and a cold drink provided. Please see page 36 for dates and full listing of activities.

CONTACT: 01227 281174 horsebridge-centre.org.uk/tickets

Young Makers Club with Nicola Priest **4-5pm** ages 6+ (term time) **Thursday**

HORSEBRIDGEARTS Come and take part in our weekly after school club with artist Nicola Priest and learn how to make and craft a variety of small projects. Please see page 40 for dates and full listing of activities.

CONTACT: 01227 281174 horsebridge-centre.org.uk/tickets

■ HORSEBRIDGEARTS May Half Term workshops

Whitstable Seaside Guide half term workshops inspired by the NEW Whitstable Seaside guide.

Parents must be present with the pre-school to age 6 workshops



Collage the seaside (under 6yrs) **10-11am** **Wednesday 29 May**

Draw the seaside (6 plus) **2-3pm** **Wednesday 29 May**

Paint the seaside (under 6yrs) **10-11am** **Thursday 30 May**

Bring along items you find on the beach; rocks, shells, sand, feathers, sticks, waste and find creative ways of painting with them.

Print the seaside (6 plus) **2-3pm** **Thursday 30 May**

CONTACT : 01227 281174 horsebridge-centre.org.uk/tickets



Nutritionist Fleur

Fleur Key BSc PGDip ANutr

Lacking energy?
Unsure where to begin with a healthier lifestyle?

Expertise:
Weight management
Family nutrition

Get in touch to discuss how Fleur can help you achieve your goals and get you feeling the best you can.

www.nutritionistfleur.com

fleur@nutritionistfleur.com
07702 333548

follow me on instagram
[@nutritionistfleur](https://www.instagram.com/nutritionistfleur)

Hey Diddle Music



We sing, we move, we learn, we smile!

Music classes for babies through to pre-schoolers at
The Horsebridge Centre on Monday mornings.

Specialist Dalcroze Eurhythmics teacher at
Guildhall School of Music and Drama

Contact Anita Memmott
nitamemmott@gmail.com 07710 575 390

CHILDRENS CLASSES AND WORKSHOPS

■ Art

Dot Kids Children's After School Art Club

4-5.30pm 5-11 years (term time) **Wednesday**

3 April Experimental Art Games

22 May Miro Art Games

24 April Superhero Children's Illustration

In this workshop we will discover & discuss Superheroes!

5 June Barbara Hepworth Sculpture

In this workshop we will discover & discuss the artist Barbara Hepworth, in particular we will look at her sculptures.

1 May Christo Installation Art

8 May Picasso Three Musicians

In this workshop we will discover & discuss the artist Alma Thomas and experiment with abstract paintings influenced by Thomas.

12 June Father's Day Portrait Art Workshop

In this workshop we will paint a portrait of our Father, Uncle, Grandfather or Step Father on canvas. The perfect gift on Father's Day!

15 May Georgia O'Keefe

In this workshop we will discover & discuss the artist Georgia O'Keefe and experiment with magnified paintings of flowers.

19 June Dubuffet Textural Art Workshop

26 June Degas Children's Art Workshop

Holiday Club

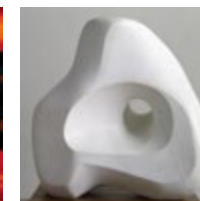
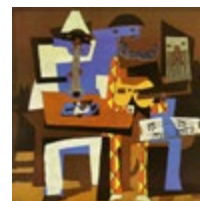
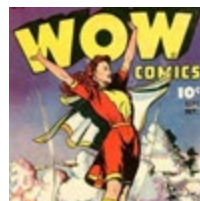
We provide out of school care for children ages 5 to 11 years during the school Holidays at Whitstable Junior School.

Open 8.00 - 18.00 Monday to Friday

Freshly cooked healthy meals are available each day.

For further information or to book, please visit our website www.kindergartenkids.co.uk

Alternatively, call head office on **01227 772200**



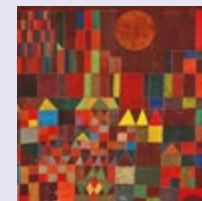
■ Dot Kids: Easter Holiday Workshop

10-11.30am 5-11 years

Tuesday 9 April

Paul Klee Children's Block Printing Workshop

In this workshop we will discover & discuss the artist Paul Klee, in particular Klee's abstract cityscape Castle & Sun. Each child will experiment with block printing and will use this method to create an abstract cityscape using Klee as an influence.



THE HORSEBRIDGE ARTS CENTRE

Young MAKERS club

every
Thursday
during term-time
4 to 5pm

For ages 6+

£3 per child or £5 for two.

Come and take part in our weekly after school club, crafting and making a variety of creative small projects. Booking with reception is advised.

4th April Paper marbling

25th April Make cardboard stamps

2nd May Hand casting

9th May Colour spinners

16th May Recycled Art: bird feeder

23rd May Life-size portraits

6th, 13th, 20th, 27th June

A series of special Oyster Parade workshops to help imagine, create and build characters that will feature in this years Oyster Festival Parade.

CHILDRENS CLASSES AND WORKSHOPS

Drama

Playtime Theatre with Sara Kettlewell

4-5pm 7-11 years **Wednesday**
5-6.15pm 11-18 years **Wednesday**

Fun drama workshops run by one of the South East's leading children's theatres. Term-time only.
CONTACT: 01227 266272 07758 729129 playtime@dircon.co.uk www.playtimetheatre.co.uk

Languages

La Jolie Ronde French for Children with Vicki Sullivan

3.45-4.30pm 6-8 year olds **Wednesday**
9.15-9.45am 0-4 years (drop in) **Saturday**
9.45-10.30am 8-10 years **Saturday**
10.30-11.15am 5-8 years **Saturday**
11.15am-12.00pm 4-7 years **Saturday**

The fun way to learn French with action songs, rhymes, role-play and stories. FREE trial session for all new families. Get in touch to find the right class for your child. Term time only. Booking required for all classes except 0-4 years.

CONTACT: 01227 779126 07889 495577 lajolierondevicki@gmail.com www.lajolieronde.co.uk

Music

Hey Diddle Music with Anita Memmott 9.20am-10.05am 18mths +, booking required **Monday**
10.15am-11am 0-18 mths, drop in class **Monday**

CONTACT: 07710 575390 nitamemmott@gmail.com

Musical Bumps Mixed Age with Kirsty Ottaway

10am 2yrs+ **Tuesday**
10.45am under 2yrs **Tuesday**

High quality music classes for babies to pre-school children. If you are looking for a class for babies under 1 year please get in touch.

CONTACT: 0845 0943786 07934 921072 canterbury.faversham@musicalbumps.com www.musicalbumps.com

Baby Moonbeams & Little Music Stars with Lucy Weston 10-10.40am walking-3yrs **Wednesday**
10.50-11.30am walking-3yrs **Wednesday**
11.40-12.20am 3mths-walking **Wednesday**

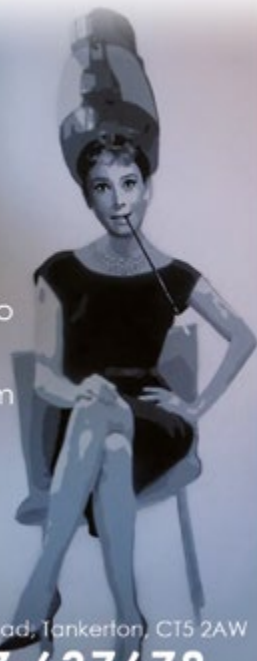
Pre-school music classes.

CONTACT: 07946 193733 whitstable@littlemusicstars.net www.littlemusicstars.net

HQ HeadQuarters

Men
Women &
Children

the salon also
provides a
massage
therapy room
and coffee
corner



133 Tankerton Road, Tankerton, CT5 2AW

01227 637678

www.hqtankerton.com

Integrative Body Psychotherapy



Energy Work
Breath Work

ruthhoskinsukcp@gmail.com
www.body-psychotherapy.org.uk
www.counselling-directory.org.uk

Ruth Hoskins MA UKCP 07742 295506

EVOLUTION HEALTH

- Chiropractic
- Chiropody / Podiatry
- Bowen Technique
- Cognitive Behavioural Therapy
- Counselling Psychology
- Homeopathy
- Hypnotherapy
- Reflexology
- Therapeutic & Sport Massage



62 Borstal Hill
Whitstable
CT5 4NA

TEL: 01227 273821



Write Mind is a new initiative from WhitLit, supported by Canterbury City Council, which uses the written word to discuss and explore better mental health through reading and creative writing. Write Mind will launch on 18-19 May and will host author talks, book chats and writing workshops throughout the year

Write Mind Launch Weekend

18-19 May 2019
Horsebridge Centre, Whitstable

Visit www.whitlit.co.uk for events listing

Tickets available from www.ticketsource.co.uk/whitlit

£5 per event
or £20 for the weekend (excluding workshops),
£30 for the weekend (including workshops)



supported by
 **canterbury**
city council



What do you do with a **chair** when the leg has come loose?
With a **toaster** that no longer works?
Or a woollen **jumper** with moth holes?

Bin it? No way! You can repair it at Repair Café!

CLOTHES • FURNITURE • ELECTRICAL APPLIANCES • TOYS • BICYCLES • ETC



repair things together • receive expert advice • meet others and be inspired

Join us at locations across Whitstable for free repairs to bikes, jewellery, computers, needlework, household items, carpentry and electrical items. Find out more at @repaircafewhitstable on Facebook or call the Horsebridge on 01227 281174.

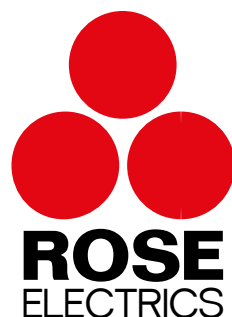
And please get in touch if you have a skill to offer! Spread the word!

ROOM HIRE AT HORSEBRIDGE

Rooms over three floors, serviced by a lift and offering accessible space for disabled people. A staffed reception to welcome and assist visitors along with a cafe providing refreshment throughout the day.

Room name	The Hub	W3	W5	W6	Performance Space	
					Mon-Fri	Sat & Sun
Hourly rate	£16	£12.50	£12.50	£12.50	£18	£26
Day rate	£90	£60	£60	£60	-	-
Room dimensions (m)	6.3 x 7.9	3.5 x 6	3.5 x 6	3.2 x 5 x 4.3	9.5 x 12	
Floor area (m²)	49	21	21	17.5	114	
Theatre seating capacity	40	16	16	15	150	
Boardroom seating capacity	24	8	8	12	50	
Standing capacity	45	20	20	20	240	

W3 and W5 offer sea views. The Hub and Performance Space are equipped with air conditioning.



reliable
female
domestic
electrician

07395 492361
rose@roseelectrics.co.uk
www.roseelectrics.co.uk



CGS Blinds & Shutters

SHUTTERS



VERTICAL



VENETIAN



ROLLER



PERFECT FIT



PLEATED



ROMAN



OFFICE
OR HOME

♦ CONSERVATORY ROOFS ♦

Come and visit our Showroom, and choose from Materials/Fabrics.

Expert advice with 1st Class service.

All blinds are custom made to your needs.

Supply Only Or Surveyed And Installed

146 Tankerton Road, Whitstable, Kent, CT5 2AW

01227 278643

www.cgsblinds.co.uk



HORSEBRIDGE FRIENDS

We really need Friends and we don't just mean the social media kind.

Pick up a copy of our 2018 Year in Review and you'll see we are doing really well at generating income, but you'll also notice that without the support of donations and Friends we just wouldn't be able to offer the services we do.

We are open seven days a week for 50 weeks of the year and welcome over 100,000 visitors through our doors. We work hard to find funding to support the range of exhibitions, classes, workshops and events that we offer. Without support from Friends and donations we wouldn't be able to support exhibitions like the stunning Think Of Me and thought provoking Waste Line exhibitions last year.

If **just 1% of the visitors** we anticipate for 2019 became Friends they would be helping us to generate nearly **10% of our income** for the year.

Friend - £20 a year (one person).

Joint Friends - £30 a year (two people)

JOIN TODAY

To join the Friends please visit horsebridge-centre.org.uk/friends or speak to us at the front desk in the centre.

BENEFITS



Being a Friend is more than just a **warm glow in your heart**, it also comes with other useful benefits ...

10% off in the HORSEBRIDGE SHOP

10% off in the Horsebridge Cafe

Invitations to special events

Special Friends updates

Discount tickets on selected films and events

... all that for **just £20 a year** for an individual membership.

By supporting us as a Friend you are helping us show funders how much The Horsebridge is valued and wanted by its community.

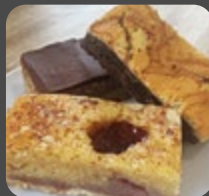
The Horsebridge Cafe

Our cafe is open seven days a week serving hot and cold drinks, **delicious cakes**, light bites and **lunches**, to eat in or take-away.

For **younger visitors** we have a selection of snacks, sandwiches and drinks which can be enjoyed in our **Kids Corner**.

Free **Wifi**.

Profits from the cafe go to the Horsebridge, helping secure the future of the arts centre



FREE TEA!

That's right! As a thanks for reading our Spring 2019 brochure you can claim a FREE tea.

Just hand this voucher in at the cafe!

