

WHAT'S ON

January to
March 2019



cinema workshops classes kids galleries shop cafe

THE HORSEBRIDGE WHITSTABLE



Copperfields
OF WHITSTABLE

Cookshop & Gifts Since 1956

Inspiration for your kitchen and home

Cookware • Homeware • Gifts • Bakeware • Furniture • Electrical • Cards

shop@copperfieldsofwhitstable.co.uk • www.copperfieldsofwhitstable.co.uk

Open 7 days a week • 93-95 High St • Whitstable • Kent • CT5 1AY • Tel: 01227 273519

THE HORSEBRIDGE WHITSTABLE

January – March 2019

contents

supported by



**NATIONAL
LOTTERY FUNDED**

with thanks to

Philippa Langton

Spacemaker Architects

Page

Films	8
Talks.....	11
Clubs.....	14
Workshops	16
Galleries	21
Classes for Adults	29
Classes for Children	37

Cover Image by Mel Chennell

from This is What I Want to Show You 2018

Instagram @melchennell



betty loves bryan

Contemporary art, homeware and clothes

And THE place to buy Breton stripes!

108 High Street, Whitstable, Kent CT5 1AZ

01227 271001 / 07788 910115

bettylovesbryan@btconnect.com • www.bettylovesbryan.com



Follow us on Twitter
@lizziedesign



Like us on
Facebook



Follow us on Instagram
@betty_loves_bryan

welcome

The Horsebridge Arts Centre will be celebrating its 15th Anniversary in April 2019. During this time the Horsebridge has established itself as a centre for vibrant creative activity, with a programme of events, exhibitions, classes, lectures, film screenings and creative workshops for all ages and abilities.

Our shop sells jewellery, ceramics, enamel ware, prints, toys and textiles by local artists and makers as well as t-shirts, cards and craft kits for kids. Our friendly, affordable cafe has a toy corner as well as a balcony and sea view. All proceeds from the shop and cafe support the work of the Horsebridge.

Admission to the centre is free and we are a registered charity which relies on the support of our users and the public to continue this valuable resource.



Fishslab Gallery

11 Oxford Street
Whitstable

 Fishslab Art Gallery
 @fishslab1



Art Gallery
www.fishslabgallery.co.uk

samson & coles
Modern British Jewellery Gallery



Bespoke Design Commissions Repairs

13 Oxford St, Whitstable, CT5 1DB 01227 277985
Opening hours: Tues - Sat 10.30am - 5.00pm

 spacemaker
architects

Want to improve your existing space?
Book a one hour no obligation consultation
with us for your £40 donation to the
Horsebridge Centre.
You'll have some new ideas and the
Horsebridge will be £40 better off.

Tweet us @spacemakerarch or
call Louisa on 07846 851694.
www.spacemakerarchitects.co.uk

CELEBRATING THINK OF ME

REMEMBERING THE LOST WWI SOLDIERS FROM WHITSTABLE

In July 2018, work started on 'Think of Me', a Heritage Lottery funded project to commemorate the centenary of the First World War.

Over 200 volunteers took part in the project either by researching the personal histories of the 291 soldiers or creating an individual sweetheart pin cushion for each of the men, that featured in our 'Think of Me' memorial exhibition in November.



Thanks to additional funding from Canterbury Arts Council, we were able to hold a Children's Festival in the October half term, with free workshops and activities for all ages based around the theme of remembrance.

We are looking forward to more creative community projects such as this in 2019 - watch this space!



Horsebridge Film Matinee Screenings

Free tea or coffee and biscuits at every performance

film

Darkest Hour (2017)



Thursday 17 January 2pm

tickets £5 earlybird £4

DARKEST HOUR is a period drama, based on real events during the 1940s, in which British Prime Minister Winston Churchill seeks to rally the nation against Germany's advance across Western Europe.
2hrs 5mins Cert PG

For earlybird discount book before 3 January.

The Greatest Showman (2017)



Thursday 21 February 2pm

tickets £5 earlybird £4

THE GREATEST SHOWMAN is a musical drama which tells the story of the showman P.T. Barnum as he creates and develops his circus in New York in the mid-1800s.
1hr 45mins Cert PG

For earlybird discount book before 7 February.

Edie (2017)



Thursday 21 March 2pm

tickets £5 earlybird £4

EDIE is a drama in which an 83 year old woman, Edie, leaves her life behind and attempts to fulfil her dream of climbing a Scottish mountain with the help of a young guide.

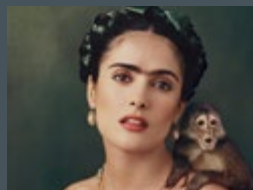
1hr 42mins Cert 12A

For earlybird discount book before 7 March.

Horsebridge Film Special Film Screenings

film

Frida (2002)



Sunday 27 January 2pm

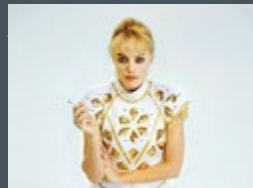
tickets £5 earlybird £4

FRIDA is a vibrant and visually stunning biopic set in 1900s Mexico City. It tells the story of controversial artist Frida Kahlo, from her life changing tram accident as a young girl to her passionate and tempestuous love affairs and marriage. This film explores her forward thinking political, sexual and artistic attitudes.

2hrs Cert 15

For earlybird discount book before 13 January.

I, Tonya (2017)



Friday 1 March 7pm

tickets £5 earlybird £4

I, TONYA is a US black comedy drama about former Olympic figure skater Tonya Harding, who was prosecuted in 1994 for an attack on her team rival Nancy Kerrigan..
2hrs Cert 15

For earlybird discount book before 15 February.



MARGO SELBY

Bradstowe House
35 Middle Wall
Whitstable, Kent CT5 1BJ
01227282758

Woven Textiles · Accessories · Rugs
Original Handwoven Artworks

—
Visitors Welcome
Weaving Studio & Shop
Monday - Friday (excl. Bank Holidays)
10am-4pm

margoselby.com



Monday to Friday 8am - 6pm

Now open at The Umbrella Community Centre

An inclusive, and friendly co-working space located
centrally on Whitstable's Oxford Street

'Find your place in our co-working community'



Email: talk@hivecoworking.co.uk

www.hivecoworking.co.uk

Horsebridge Art Talks

The Horsebridge Art Talks programme continues with lectures exploring different facets of art and culture throughout the centuries, through presentations with images and artefacts. Led by Hephzibah Lewellyn Jones.

Contact: hephzibahllewellynjones@aol.com / 07763 016 941 directly for more detailed information.

Wednesday 23 January 7pm

tickets £7.50

The Muralist Movement in Mexico: How art and politics came to represent each other

Wednesday 6 February 7pm

tickets £7.50

Casta paintings originate in Colonial Latin America and are often based on the hierarchical system of racial classification in New Spain. We will concentrate on how the figure is depicted

Thursday 20 March 7pm

tickets £7.50

Colour in Art: An examination of what colour means to the Artist and what effect it has on the Viewer

Sunday Art Talks Club

FREE, small suggested donation

Join Hephzibah for monthly round table discussions to exchange thoughts on any area of artistic practice of personal interest. Participants are encouraged to bring books, ideas and objects for an informal group session of looking at art. Contact Hephzibah for dates.

MERIDIAN

Meridian are inline with all your Mortgage Needs

We recommend from the whole of the market and offer a FREE no obligation initial consultation



- Mortgages
- Remortgages
- Buy to Let Mortgages
- Bridging Loans / Fast Finance
- Secured Loans
- Home Insurance
- Life Assurance
- Critical Illness
- Income Protection

Meridian Consultants

50 - 52 Oxford Street, Whitstable, Kent CT5 1DG

Call us today on **01227 26 66 88**

info@meridian-mortgages.co.uk

YOUR HOME MAY BE REPOSSESSED IF YOU DO NOT KEEP UP REPAYMENTS ON YOUR MORTGAGE.

Meridian is a trading style of Rosemount Financial Solutions Ltd who are an appointed representative of Intrinsic Financial Planning Limited (Registered in England 5372217) and Intrinsic Mortgage Planning Limited, which are authorised and regulated by the Financial Conduct Authority. Intrinsic Financial Planning Ltd and Intrinsic Mortgage Planning Limited are entered on the FCA register under reference 440703 and 440718.

THE HORSEBRIDGE WHITSTABLE

CREATIVE WORKSHOPS for adults

Mondays fortnightly
10 to 11.30am

A new programme of creative activities designed around making and crafting. Learn different techniques, enhance your creative skills and craft a small project to take home each time. £7 per person which includes a free hot drink.

14TH JANUARY	Mono Printing
28TH JANUARY	Seeded Paper Making
11TH FEBRUARY	Valentines Cards
25TH FEBRUARY	Jewellery Making
11TH MARCH	Creative Darning
25TH MARCH	Concertina Book Making

Comic Club

Thursday 10 January, 7 February, 14 March 7-9pm

£4 to join, £2 thereafter

A great monthly club for lovers of comics and graphic novels — a heady mix of industry professionals and fans of the artform.

Have a beer and read great, inspiring, new or vintage graphic fiction.

18+



Integrative Body Psychotherapy



Energy Work
Breath Work

ruthhoskinsukcp@gmail.com
www.body-psychotherapy.org.uk
www.counselling-directory.org.uk

Ruth Hoskins MA UKCP 07742 295506

ALMA CAIRA GLASS FUSING WORKSHOPS 2019



BEGINNERS SATURDAY WORKSHOPS

4th May, 13th July

21st Sept, 5th Oct

10am - 3pm £70 PER SESSION

Why not treat someone to one of my gift vouchers?
Please contact me for further details or to make a booking.

www.almacaira.co.uk alma@almacaira.co.uk

01227 280 648 07947 842 642

Follow me on Facebook: AlmaCairaFusedGlass

Whitknits

Spring 2019

Textile Craft Club

Monthly on Saturdays 10.30-12.30 starting on 19th January

If you love Knitting, Crochet or Sewing and wish to join a group of like minded crafters, and textile enthusiasts, come along to this monthly get together. It would also be suitable for anyone with a basic knowledge, wishing to develop their skills. In the first session we will look at various ways to make cosy blankets and throws, by producing small squares, and joining them together in different ways. This could be to make a Baby Blanket, or larger throw, or cushion covers, all done in bite sized pieces. You may have materials you wish to use, but there will be materials and equipment available too. We will also look at using recycled materials.

Cost is £10 per person, advanced booking per session is necessary as numbers are limited.

(If you wish to come to all 6 sessions the last one will be discounted)

Textile Craft Club 10.30-12.30 Saturday February 16th and Saturday 16th March: details and further dates to be confirmed.

Sunday 10th February 11am - 4pm

Whitknits Pop-Up Shop

Your chance to squish some beautiful yarns, see the colours before you buy, also haberdashery, patterns and books at very competitive prices. You can join us for a chat about your latest project, we will be happy to help.

For more info email whitknitsuk@gmail.com

THE HORSEBRIDGE WHITSTABLE

parent and toddler messy ART play

every Thursday

9.30 to 10.30am

Our messy play group is perfect for small budding artists! All materials will be provided for an hour of creative play, no minimum age but children must be accompanied by a parent or guardian. £3 which includes a child's cold drink.

10th January Mod Roc Sculpture

17th January Hand Casting

24th January Paper Marbling

31st January Printed Fish

7th February Life Size Portraits

14th February Valentines Heart Garland

28th February Tote Bag Design and Print

7th March Unusual Paint Brushes

14th March Block Printing

21st March Butterfly Prints

28th March Mother's Day Cards

Young MAKERS club

every Thursday
during term-time
4 to 5pm

Come and take part in our weekly after school club, crafting and making a variety of creative small projects. Suitable for ages 6+, booking with reception is advised. £3 each or £5 for 2.

10th January Painting techniques, unusual brushes

17th January Mod Roc Sculptures

24th January Mystic Eye Weaving

31st January Sea Creature Masks

7th February Recycled Art, Plastic Bottle Fish

14th February Valentines Heart Garland

28th February Design and Decorate a tote bag

7th March Block Printing

14th March Beaded Wind Chime

21st March Drawing Experiments, Tape

28th March Mother's Day Cards

..... THIS HALF TERM BE PART OF

SPACE WEEK

IN OUR CHILDRENS WORKSHOPS

LAUNCH YOUR CREATIVITY!

FROM PRE-SCHOOLERS UPWARDS

MONDAY 18 FEB

THURS 21 FEB

FRIDAY 22 FEB

**MAKE A PRINTED
MOON**

10 - 11 AM

PRE-SCHOOL TO 6*

**MOON & STARS
MOBILE**

10 - 11 AM

PRE-SCHOOL TO 6*

**PLANET SUN
CATCHERS**

10 - 11 AM

PRE-SCHOOL TO 6*

**MAKE A BUTTON
MOON**

2 - 3 PM AGE 6+

**CREATING NEBULAS
AND GALAXIES**

2 - 3 PM AGE 6+

**WATER COLOUR
PLANETS**

2 - 3 PM AGE 6+

ALL WORKSHOPS ARE **£3** FOR ONE CHILD OR **£5** FOR TWO

*PARENTS MUST BE PRESENT WITH THE PRE-SCHOOL TO AGE 6 WORKSHOPS

**ARTS AND CRAFTS
CREATIVE WRITING
DRAMA
POETRY
AND MORE ...**

**COOKERY
DANCING
GARDENING
SINGING**

A week of **free** activities organised by **Red Zebra's Social Prescribing Team** in partnership with the **Horsebridge** to highlight how the power of creativity can help people feel better.

There will also be an opportunity to meet people from some of the helpful local organisations featured on www.connectwellkent.org.uk

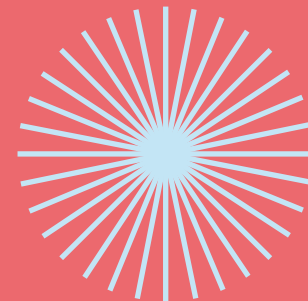
More information at
www.whitstablewellnessweek.co.uk
or contact catriona@createinkent.co.uk

**RED
ZEBRA**
COMMUNITY SOLUTIONS

**THE HORSEBRIDGE
ARTS CENTRE**



**NATIONAL
LOTTERY FUNDED**



**Whitstable
Wellness
Week**

An opportunity
to get creative
and feel better

**SATURDAY 23rd
- FRIDAY 29th
MARCH 2019**

Horsebridge Open 2019

The Space Within

12-27 January

An open submission exhibition bringing together the works of a wide range of artists responding to a common theme.

THE HORSEBRIDGE
ARTSCENTRE

galleries

Our galleries offer a diverse and dynamic exhibition programme throughout the year. They serve as a platform to showcase work from a wide range of artists as well as art, heritage and community projects curated by the Horsebridge.

The galleries are free to visit and are open to public every day apart from the first and last day of the exhibition dates which are dedicated installation and de-installation days.

gallery 1

12 - 27 january

The Space Within

Horsebridge Open 2019

The exhibition draws on the theme of physical space and work that responds to themes inspired by British female artists Rachael Whiteread and Phylida Barlow. The exhibition's aim is to bring together artists of all levels who explore the role of art in contemporary society and work in engaging, playful, thought-provoking ways.



gallery 1

31 january - 11 february

Our Blue Planet

The Coastal Alliance

Children from 12 local primary schools explore their relationship with the sea creatively, and share concerns about the impact of pollution, especially plastic waste, on the coastal and marine environment.



gallery 2

14 february - 4 march

Horsebridge Shop+

Throughout the year, The Horsebridge Shop stocks an eclectic collection of gifts, crafts, prints and accessories made by local artists and designers.

This showcase offers an opportunity to see a wider range of their recent work and introduces new makers to the shop in 2019.



gallery 1

13 - 26 february

Images of Life

Forge Cottage Art Club

Forge Cottage Art Club's annual exhibition is a collection of gouache, acrylic and pastel paintings created by the children and adult artists at Forge Cottage Studio.



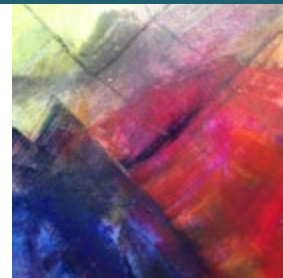
gallery 1

27 february - 12 march

Our Time This Space

Daphne Candler, Barbara Drinkwater, Karen Wynard

3 Artists working together over a period of time to create a visual response to their personal journey. Three mind-sets entangle and divert throughout the process.



this is what I want to show you
call for entries #lmsy2019



Take part in our community photography instagram exhibition.
Show us a snapshot of your life and have it exhibited in The
Horsebridge gallery. What would you like to show us?

For more information visit
horsebridge-centre.org.uk/lmsy2019

THE HORSEBRIDGE
ARTS CENTRE

gallery 1

13 - 26 march

Revenge?

The Fishslab Collective

'Revenge at first though sweet. Bitter ere long back on itself recoils.' John Milton

Each artist has explored the dynamics of revenge and created responsive works in their individual styles.



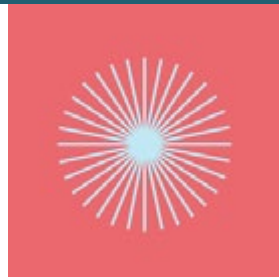
gallery 2

20 - 26 march

The Power of Creativity

An exhibition highlighting the power of creativity to help people feel better that will complement the events taking place for Whitstable Wellness Week.

For more information on this event see page 19 or visit
www.whitstablewellnessweek.co.uk



COME AND EXPLORE THE WIDE RANGE OF EVENTS THE UNIVERSITY OF KENT HAS TO OFFER!



www.kent.ac.uk/events/

University of
Kent

workshops

Sing for your Sanity! with Laure Meloy

Sat 12 January, 9 February and 9 March, 2 - 3pm

Places limited, booking essential. Have you always wanted to sing but afraid to try? This workshop is for you! Singing has been proven to improve health...come along and see what it can do for you.

Contact: femmelunaproductions@aol.co.uk 07769 838790

Creative Workshops for Adults with Nicola Priest

Fortnightly from Monday 14th January @10-11.30am.

Ticket includes a hot drink. The Horsebridge are now offering a programme of creative workshops for adults, designed around making and crafting. See page 13 of this brochure for more information.

Contact: info@thehorsebridge.org.uk 01227 281174

Stained Glass Taster Day with Stephen Harries

Sat 19 January, 2 February, 16 February, 2 March and 30 March, 10.15am - 4.30pm

Learn the basics of how to cut glass and solder lead and make your own small stained glass panel to take home at the end of the day. All tools and materials provided with a choice of patterns to follow and colours to use.

Contact: stephenharries.glass@gmail.com stephenharriesglass.co.uk



Local fish from
Whitstable Harbour

Classic **French** Cuisine

Opening Times:

Lunch
Tues - Sun 12.00/2.30

Evenings
Tues - Mon 6.00/9.30

41 Harbour Street
Whitstable, Kent CT5 1AH
For reservations telephone:
01227 265337



Men
Women &
Children

the salon also
provides a
massage
therapy room
and coffee
corner



133 Tankerton Road, Tankerton, CT5 2AW

01227 637678

www.hqtankerton.com

classes for adults

art
Friday

Tankerton Bay Art with Sarah Holliday

2-4pm Fridays, Block of 6 starting 11th January.

A weekly art course to cover all aspects of drawing and painting, and more importantly, looking! Aimed at beginners and improvers. You will be amazed how quickly your confidence and skills grow.

Contact: sarah2mike@yahoo.co.uk

art
Sunday

Life Drawing with Ron Freeman

2-4pm Alternate Sundays, 20 January – 17 March.

If you would like to join these informal sessions, please speak to Ron.

Contact: 07749 835036 rgcfreeman@aol.com

art
Sunday

Art Talks Club with Hephzibah Llewellyn-Jones

Contact Hephzibah for dates.

Monthly round table discussions, to exchange thoughts on any area of artistic practice of personal interest. Participants are encouraged to bring books, ideas and objects for an informal group session.

Contact: 07763 016941 hephzibahllewellynjones@aol.com

craft
Wednesday

Bead 'n Banter with Jayne Johnson

10am-12.30pm First Wednesday of the month. Bring beadwork and exchange tips, with monthly raffle and quarterly challenges.

Contact: 01227 265293 gillgoldfinch@btinternet.com

www.rainbowcollection.co.uk

dance
Monday

50+ Contemporary Dance Class with Marie Forbes

2.15-3.15pm From 14 January – 1 April inclusive A fun contemporary dance class for people aged 50+ with some experience in any form of dance.

Contact: 07846 957972 marieforbes@hotmail.com

EVOLUTION HEALTH

- Chiropractic
- Chiroprody / Podiatry
- Bowen Technique
- Cognitive Behavioural Therapy
- Counselling Psychology
- Homeopathy
- Hypnotherapy
- Physiotherapy
- Psychosexual and Couples Therapy
- Reflexology
- Therapeutic & Sport Massage



62 Borstal Hill
Whitstable
CT5 4NA
TEL: 01227 273821

Hey Diddle Music



We sing, we move, we learn, we smile!

Music classes for babies through to pre-schoolers at
The Horsebridge Centre on Monday mornings.

Specialist Dalcroze Eurhythmics teacher at
Guildhall School of Music and Drama

Contact Anita Memmott
nitamemmott@gmail.com 07710 575 390

dance
Monday

NEW 60+ Dance Performance Company with Marie Forbes
3.15-4.30pm From 14 January – 1 April inclusive The performance company is a creative dance session for people aged 60+ with some experience in any form of dance. An opportunity to be creative with movement rather than focusing on formal technique. The group will take part in fun and informal performances throughout the year.
Contact: 07846 957972 marieforbes@hotmail.com

dance
Wednesday
Thursday

Flamenco Dance with Charlotte Baynes
11am-12pm - Mixed Level
5.15-6.15pm - Mixed Level Enjoy an exciting array of Flamenco styles such as Alegrias, Bulerias, Guajiras + more. Charlotte is a highly experienced and inspired teacher within the arts. Ideally, wear shoes with a firm heel.
Contact: 07906 685109 charlottcadiz@yahoo.co.uk charlottebaynes.com

dance
Friday

Ballet & Contemporary Dance with Rosita Yarboy
10-11am For adults, run by Reach Performing Arts. Contact: 01227 369891
reachacademy@sky.com www.reachperformance.co.uk

dance
Friday

Adult Tap Dance with Rosita Yarboy
11am-12 noon Run by Reach Performing Arts. Contact: 01227 369891
reachacademy@sky.com www.reachperformance.co.uk

dance
Saturday

Diva Bollywood Dance Class with Jasmin deSilva-Smith
10.30-11.30am An hour to let your inner Diva out! A sneaky work out for your mind and body, it's fun to follow, simple routines. Everyone welcome.
Contact: 07761 199179 jasmin@my-energise.co.uk

fitness

Tuesday
Thursday

Callanetics® Exercise Method with Jennifer Watson
9.30-10.30am and 10.30-11.30am
7.30-8.30pm Lose at least one dress size in 10 hours! Safely strengthen your whole body, especially core and pelvic floor, and dramatically improve your posture. Contact: 07966 731323 watsonjennifer16@gmail.com
www.callanetics-canterbury.co.uk

THE LINDLEY PLAYERS

The Old Bull and Bush Music Hall

Saturday 7.30pm on 2 February 2019 at Simon Langton Boys School
On-line tickets: www.playhousewhitstable.co.uk £15.00
A Canterbury Rotary Club event in aid of charity

languages Monday	Spanish Intermediate Conversation with Kent Adult Education Starts 1 October 10am-12pm Contact: 03000 412222 www.kentadulthoodeducation.co.uk
languages Tuesday	Italian Beginners Plus with Kent Adult Education Starts 2 October 1-3pm Contact: 03000 412222 www.kentadulthoodeducation.co.uk
languages Thursday	Adult Spanish Improvers Group with Kent Spanish Speak 10-11.15am For those with a basic knowledge of Spanish wishing to improve their vocab, sentence structure and use of the language in an enjoyable manner. Focusing on conversation in a relaxed and friendly group class atmosphere. Contact: 07814 852111 kentspanishspeak@gmail.com www.kentspanishspeak.co.uk
languages Thursday	French Intermediate Parlons Français with Kent Adult Education Starts 4 October 11.30am-12.30pm Contact: 03000 412222 www.kentadulthoodeducation.co.uk
languages Thursday	French Advanced with Kent Adult Education Starts 4 October 1-3pm Contact: 03000 412222 www.kentadulthoodeducation.co.uk
pilates Monday	Pure Pilates with Sharon Saker Evenings Tone, sculpt, stretch and breathe... all levels welcome. Just bring a mat and wear comfortable clothing. Contact: 07970 258527
pilates Wednesday	Pilates with Stephanie Fancy Intermediate 6.30-7.30pm, Beginners 7.30-8.30pm Both classes for men and women. Strengthen your body, mind and spirit. Contact: 07890 897851 stephaniefancy@gmail.com www.facebook.com/fancypilates Instagram: fancypilates

pilates Thursday	Body Control Pilates with Alison Copley 7-8pm Mixed Ability, beginners welcome Practice pilates regularly and your body will become stronger, toned and more flexible. Suitable for people of all ages and levels of fitness. Small class sizes - maximum 12 participants. For mixed ability and beginners. Contact: 07903 010816 alisonpilates@aol.com www.pilateswithalison.net
tai-chi Thursday	Tai-Chi with Christine Hopper 12.30-1.30pm T'ai Chi Ch'uan style is the traditional Yang form. When practiced regularly T.C.C brings noticeable improvement at physical, energetic, and emotional levels. The health benefits of a serious practice are rapidly felt in daily life. Booking essential. Contact: christinehopper@talktalk.net
theatre Monday	Kent Coast Theatre (KCT) with Lou Fowkes 7-9pm. Engaging community & inspiring potential, KCT is a community theatre company based at the Horsebridge. Productions and acting workshops throughout the year for adults 16+. Contact: 01227 280314 info@kentcoasttheatre.co.uk www.kentcoasttheatre.co.uk
well being	Life Coaching and Therapy with Suzi Tyler Book an appointment anytime Suzi Tyler, Breakthrough Session with Hypnotherapy, NLP & EFT Matrix Re-imprinting. CNHC & BIH Registered. Clear hidden limits that spoil your health & happiness. Specialism: Panic Attacks. Contact: 07836 635233 www.rapid-health.co.uk
well being Saturday	Hypnobirthing with Kent Adult Education 10am-4pm, 9th and 16th March Contact: 03000 412222 www.kentadulthoodeducation.co.uk
writing Sunday	Four Week Writing Course with a Difference with Linda M James Two new writing classes for spring, 2019: starting 13th January and 17th February. Both run for four consecutive weeks. 2-4pm. A writing course with published author and screenwriter Linda M James. Booking essential. Contact: 01227 634107 07969 051064 lindamjames77@gmail.com www.lindamjames.co.uk



An open-air showcase of locally-created, British made, premium and hand-crafted goods and fine art. Micro eateries serve a mouth watering variety of food. Set in the working harbour of Whitstable.

Open every weekend (weather permitting) and 5 days a week during the summer.
Pop-up Huts available to rent.

www.harbourmarketwhitstable.co.uk



yoga
Monday

Yoga Basics with Bernadette Fisher

5.45-6.45pm Classical Hatha Yoga for those new to yoga, returning, or seeking a slower class. Contact: 07739 302870 bernadetteannef@aol.com
www.bernadettefisheryoga.co.uk

yoga
Tuesday

Vinyasa Yoga with Monica Marini

1-2.15pm A dynamic and energising practice open to those with a more developed Yoga practice and/or a good level of stamina. These classes are defined by principles of Vinyasa Krama (intelligent sequencing) and include exploration of alignment, arm balances and the practice of inversions. Contact: 01227 273147 07913 887108 momoiah@yahoo.com

yoga
Tuesday

Yoga with Emma Epton

6.30-7.30pm Mixed Level. Yoga Alliance UK registered teacher. Emma is also pregnancy yoga trained. Contact: 07891 454450 whitstablecommunityyoga@gmail.com

yoga
Tuesday
Thursday

Hatha Yoga with Linda Thomson

10-11.30am
10-11.30am A space during the busy and often stressful week for you to stretch in classical yoga postures. For all levels, beginners welcome. Contact: 07516 494300 yogajoyful@gmail.com

yoga
Saturday

Yin Yoga with Emma Epton

9.15-10.15am Yin Yoga targets the deep connective tissues of the body. Connecting to the meridian lines in the body and encompasses Daoist principals and traditional yoga. Contact: 07891 454450 whitstablecommunityyoga@gmail.com

yoga
Saturday

Yoga Drop-in with Bernadette Fisher

11.45am-12.45pm Classical Hatha Yoga Visitors and new students always welcome - call if you'd like me to bring a mat. Contact: 07739 302870 bernadetteannef@aol.com
www.bernadettefisheryoga.co.uk



Beautiful Thing

By Jonathan Harvey

Wednesday 20th – Saturday 23rd March
7:45pm

At the Playhouse Whitstable

THE LINDLEY PLAYERS

For tickets call 01227 272042 or visit www.playhousewhitstable.co.uk



Holiday Club

We provide out of school care for children ages 5 to 11 years during the school Holidays at Whitstable Junior School.

Open 8.00 - 18.00 Monday to Friday

Freshly cooked healthy meals are available each day.

For further information or to book, please visit our website www.kindergartenkids.co.uk

Alternatively, call head office on **01227 772200**



classes for kids

Music and activities for parents and children to enjoy

-
- drama** **Playtime Theatre** with Sara Kettlewell
 Wednesday 4-5pm 7-11 years
 Wednesday 5-6.15pm 11-18 years
 Fun drama workshops run by one of the South East's leading children's theatres. Term-time only. Contact: 01227 266272 07758 729129
playtime@dircon.co.uk www.playtimetheatre.co.uk
-
- kids art** **Dot Kids: Children's After School Art Club**
 Wednesday Term Time Only, 4-5.30pm (5-11yrs)
 In these workshops we will experiment with various artistic techniques, including paint, collage and sculpture. We will learn that there is no such thing as a mistake and encourage artistic freedom and confidence we will discover inspirational artists. See website or contact for more details.
 Contact: 07961 303156 julie@dotkids.co.uk www.dotkids.co.uk
-
- kids art** **Horsebridge Parent & Toddler Messy Art Play** with Nicola Priest
 Thursday Thursdays, 9.30-10.30am, Term Time
 Come and join artist, Nicola Priest for an hour of creative play. All materials and a cold drink provided. Please see Page 16 for dates and full listing of activities. Contact: 01227 281174 info@thehorsebridge.org.uk
-
- kids art** **Horsebridge Young Makers Club (ages 6+)** with Nicola Priest
 Thursday Thursdays, 4-5pm, Term Time
 Come and take part in our weekly after school club with artist Nicola Priest and learn how to make and craft a variety of small projects. Please see Page 17 for dates and full listing of activities.
 Contact: 01227 281174 info@thehorsebridge.org.uk



Hut 23 Harbour Art Gallery

2nd – 23rd Jan
Maintenance

23rd – 30th Jan
To be announced

30th Jan – 2nd Feb
Daphne Candler
Mixed Media

6th – 13th Feb
Irene Southon
Fused Glass

13th – 20th Feb
Daphne Candler
Mixed Media

20th – 27th Feb
Sarah Dunn
Pencil Drawings



Photo by Sue Carfrae

27th Feb – 6th Mar
John Wilkins & Judith Hall
Paintings & Photographs

6th – 13th Mar
Lindsay Wilkinson
Felt & Photographs

13th – 20th Mar
Lola McDowell
Textiles

20th – 27th Mar
**Janet Dance
& Marion Sheppard**
Mixed Media

27th Mar – 3rd Apr
Bethany Rogers
Ceramics

Opening Times until end of March: Saturday and Sunday 10am - 4pm
Contact madeinwhitstable@gmail.com for additional opening times

DONT MISS MIW ALCHEMY SHOW IN GALLERY 1 AT THE HORSEBRIDGE 10TH – 23RD APRIL 2019



Made In Whitstable



languages
Wednesday

La Jolie Ronde French for Children with **Vicki Sullivan**
3.45-4.30: 6-8 year olds Booking required, 4.30-5.15: 4-6yr old Booking required

Saturday

9.15-9.45: 0-4 years Drop in or discount for block booking,
9.45-10.30: 8-10 years Booking required, 10.30-11.15: 5-8 years Booking required, 11.15-12.00: 4-7 years Booking required

The fun way to learn French with action songs, rhymes, role-play and stories.
FREE trial session for all new families. Get in touch to find the right class for your child. Term time only. Contact: 01227 779126 07889 495577

lajolierondevicki@gmail.com

www.lajolieronde.co.uk

music
Monday

Hey Diddle Music with **Anita Memmott**
9.20am-10.05am 18 months plus Term-time, booking required
10.15am-11am 0-18 months Drop in class.
Contact: 07710 575390 nitamemmott@gmail.com

music
Tuesday

Musical Bumps Mixed Age with **Kirsty Ottaway**
10am 2yrs+, 10.45am under 2yrs High quality music classes for babies to pre-school children. If you are looking for a class for babies under 1 year please get in touch. Contact: 0845 0943786 07934 921072
canterbury.faversham@musicalbumps.com www.musicalbumps.com

music
Wednesday

Baby Moonbeams & Little Music Stars with **Lucy Weston**
10-10.40am 3 months to walking, 10.50-11.30am Walking - 3 years Pre-school music classes. Contact: 07946 193733
whitstable@littlemusicstars.net www.littlemusicstars.net

Quarter page
62mmx62mm

Full page
130mmx130mm

advertise here

Half page
130mmx62mm

Book for one year and only pay for nine months.

This programme has a print run of 5,000.

It is distributed to local businesses, libraries, schools and the Friends of the Horsebridge.

An advert in our programme represents excellent value for money and helps us continue to serve the local community.

Contact helen@thehorsebridge.org.uk



don't forget to
visit our super
SHOP



Pop into **THEHORSEBRIDGE** shop to find **ceramics**, t-shirts, **prints**, cards and a lot more all created by talented **local artists**. We are also stockists for the incredible **Djeco** range, a rarity of high quality at fantastic prices.

And your purchases will directly support the centre and local artists. The **gifts** that keep on **giving**.

Chappell CONTEMPORARY

ART GALLERY

30 Oxford Street
Whitstable

chappellcontemporary.com

01227 637329

Specialising in Limited edition
Prints and Contemporary
Originals



Liz McGown Sally Pullen Louise Whorlow
CHIROPRACTORS

- ❖ Relieve Pain and Improve Function and Performance
- ❖ Back and Neck Pain, Headaches
- ❖ Sport Injuries, Joint Pain and Muscle Aches
- ❖ All Ages Welcome: Children, Teenagers, Adults and Elderly

EVOLUTION HEALTH 01227 273821
62 Borstal Hill
CT5 4NA

GCC Registered
General
Chiropractic
Council



Member of the
British Chiropractic Association



HORIZONCOACHING

Rachael Sharrad

Executive Coach (ILM level 7 dip)

**Business Coaching
Bereavement Coaching
Practical Support**

Available by phone, skype, in person
or walk 'n talk on the beach.

07815542896

office@horizoncoaching.co.uk
www.horizoncoaching.co.uk

Whitstable
Nutrition Centre

A friendly, independent family
run health shop trading in
Whitstable since 1970

81 High Street, Whitstable, Kent CT5 3DY



01227 278 550



whitnutcentre@gmail.com



@whitstablenuutri



The Horsebridge Cafe

Our cafe is open seven days a week serving hot and cold drinks, **delicious cakes**, light bites and **lunches**, to eat in or take-away.

For **younger visitors** we have a selection of snacks, sandwiches and drinks which can be enjoyed in our **Kids Corner**.

Free **Wifi**.

Profits from the cafe go to the Horsebridge, helping secure the future of the arts centre

FREE TEA!

That's right! As a thanks
for reading our brochure
you can claim a FREE tea.

Just hand this voucher in
at the cafe!



room hire

The Centre is on three floors, all of which are serviced by the lift and offer accessible space for disabled people. Our reception is permanently staffed to welcome and assist visitors and the cafe with balcony area provides refreshment throughout the day.

Room Name	Hourly Rate	Daily Rate	Sea View	Air Conditioning	Room Dimensions	Floor Area	Theatre Seating Capacity	Boardroom Seating Capacity	Standing Capacity
The Hub	£16.00	£90.00	No	Yes	6.3x7.9m	49m ²	40	24	45
Workshop 4	£12.50	£60.00	No	No	3.5x7.9m	27m ²	20	16	30
Workshop 3	£12.50	£60.00	Yes	No	3.5x6m	21m ²	16	8	20
Workshop 5	£12.50	£60.00	Yes	No	3.5x6m	21m ²	16	8	20
Performance Space Monday-Friday Saturday & Sunday*	£18.00 £26.00	-	No	Yes	9.5x12m	114m ²	150	50	240

*9am to 6pm only

Phone **01227 281174** or email **info@thehorsebridge.org.uk**

have you made friends with us yet?

The Horsebridge Centre extends a warm welcome to more than 100,000 visitors annually.

It is open seven days a week, closing only over Christmas/New Year, and provides class space for tutors, meeting rooms for the community, and a cafe **as well as** a rolling programme of art exhibitions in two galleries **and** a dynamic schedule of music, comedy and film.

We receive very little public funding, so have to be largely self-financing through ticket sales, room hire and merchandise. It is our dearest wish to one day create surplus funds to allow us to improve the centre for our community.

If you value the Horsebridge, would you consider becoming our Friend? For £20 a year (£30 for joint membership and there are concessions too) we offer discounts in our on-site shop and our fantastic cafe.

Please talk to our reception staff about the Friends scheme or sign up on our website www.horsebridge-centre.org.uk. THANK YOU!

CGS Blinds & Shutters

SHUTTERS



VERTICAL



VENETIAN



ROLLER



PERFECT FIT



PLEATED



ROMAN



OFFICE
OR HOME

♦ CONSERVATORY ROOFS ♦

Come and visit our Showroom, and choose from Materials/Fabrics.

Expert advice with 1st Class service.

All blinds are custom made to your needs.

Supply Only Or Surveyed And Installed

146 Tankerton Road, Whitstable, Kent, CT5 2AW

01227 278643

www.cgsblinds.co.uk



Repair Café

What do you do with a **chair** when the leg has come loose?
With a **toaster** that no longer works?
Or a woollen **jumper** with moth holes?

Bin it? **No way!** You can repair it at Repair Café!

CLOTHES • FURNITURE • ELECTRICAL APPLIANCES • TOYS • BICYCLES • ETC



repair things together • receive expert advice • meet others and be inspired

Join us at locations across Whitstable for free repairs to bikes, jewellery, computers, needlework, household items, carpentry and electrical items. Find out more at @repaircafewhitstable on Facebook or call the Horsebridge on 01227 281174.

And please get in touch if you have a skill to offer! Spread the word!

O p e n i n g H o u r s



The Horsebridge Centre

Mondays to Saturdays 9am - 6pm
(Later for classes and events)

Sundays 10am - 5pm

The Horsebridge Cafe

Mondays to Saturdays 9am - 4.30pm
Sunday 10am - 4pm

The Horsebridge Centre is a charity
Charity number: 1099570

Printed by Oyster Press www.oysterpress.co.uk



thehorsebridge



@horsebridge



thehorsebridge

info@thehorsebridge.org.uk

www.horsebridge-centre.org.uk

11 Horsebridge Road, Whitstable, Kent, CT5 1AF

01227 281174