

music theatre comedy talks exhibitions films workshops family shop

WHAT'S ON

January - March 2026



**THE HORSE
BRIDGE**

A place where everybody can experience creativity.
Everyone is welcome, everyone can take part.

WELCOME

We are opening 2026 with an exciting and ambitious programme of exhibitions, comedy, music, film, theatre, talks and a rich and varied offering of creative workshops and activities to take part in. **inPrint**, our first open print show opens on 16 January, following the tradition of opening our year with exceptional print shows. This is followed by our annual fundraising **Art Auction** in February.

Our **Monday matinees** are joined by **Black Pearl** screening cult classics - creating a varied programme from The Choral to My Bloody Valentine. And in events we have a fantastic monthly jazz line up of the Nina Clark Trio, Nigel Price Trio and Paul Booth as well as a brilliant comedy offering of a one man show by Mark Thomas.

The popularity of our **Young Makers Club** has meant we have expanded the programme so that we now have Horsebridge **Pay What You Can** activities for children and young people on Mondays, Wednesdays and Thursdays alongside new classes from Art Socials on Tuesdays. Family activities include the monthly Saturday **Family Art Club** and two family theatre productions in half term.

Our regular **Art & Artists** and **Art Decades** talks are joined by **special talks** on the Life and Times of Sidney Cooper, Holy Lives and Horrid Deaths and the Life and Works of Marie Bashirtseff.

As always there is a wonderful offering of **Studio Sessions** of painting, printing, sewing and sculpting. New sessions this season include **Absolute Beginners art class** and **Clay Creations workshop**.

Liz Daone
Executive Director

CONTENTS

Live Events	4
Jazz	4
Comedy	5
Talks	6
Exhibitions	6
Film	8
ARTbank	3
Create & Do Adults	11
Room hire	11
Studio Sessions	12
Create & Do Families	14
Friends	16
Visit	16

ART AUCTION

VIEWING EXHIBITION
14 - 22 February 2026

A great opportunity to bid for unique artworks and support the work of The Horsebridge



Cover image:
Fishers off The West Coast
by **Laura Boswell ARE**
who is part of the inPRINT exhibition.
See page 6 for details.

LIVE EVENTS

Live comedy, music, talks and more

JAZZ

Sundays 5 - 7.30pm

Bar opens 4pm

£17.50 or £15 for Friends

thehorsebridge.org.uk/jazz



Celebrating the best of live jazz in all its forms, featuring top notch vocalists and musicians from across the county and beyond, led by Artistic Director of Broad Reach Records, Kai Hoffman.



25 January **Nina Clark Trio**

'Take Love Easy' - Celebrating the duets of Ella Fitzgerald and Joe Pass. Fifty years ago, Ella Fitzgerald and virtuoso guitarist Joe Pass recorded 'Take Love Easy' beginning a series of legendary duet albums. To celebrate these iconic recordings vocalist **Nina Clark** and guitarist **Sam Dunn** bring you an evening of swinging, joyful and tender music from their songbook. Following several sell-out shows at Ronnie Scott's Jazz Club, Nina and Sam are delighted to bring you this intimate evening of song, joined by brilliantly swinging bassist **Stephen Bridgland**.

22 February **Nigel Price Organ Trio**

The Nigel Price Trio is led by award-winning British jazz guitarist Nigel Price, a leading figure on the UK jazz scene for over 25 years. Widely respected for his work in the organ-trio and bebop traditions, Price has built an extensive career as a performer, recording artist and band leader.

Performing this evening will be Nigel Price on guitar, Ross Stanley on Hammond organ and Joel Barford on drums.



22 March **Paul Booth**

Saxophonist Paul Booth is one of the UK's most in-demand jazz musicians and a highly respected international soloist, composer, arranger and session player. His career spans jazz, pop, rock and world music, with performances and recordings heard on stages and releases worldwide.

His performance and recording credits include Steve Winwood, Eric Clapton, Steely Dan, Carlos Santana, Van Morrison, The Eagles, Chaka Khan, Jamiroquai, and many others.





21 March 7 -9.30pm bar opens 6.30pm
Book a table £48 (up to 8) **or join a table £6**

Come and join us for our latest fundraising Spring Equinox Quiz. Explore and test your knowledge of Kentish and English folk traditions - including music, picture and bonus rounds!

There are prizes for the winning team and a great fundraising raffle too.

Light snacks are included, but please feel free to bring your own nibbles.

We will be running a bar for the evening - please note only drinks purchased from The Horsebridge can be consumed at the quiz.



thehorsebridge.org.uk/quiz

Whitstable Wine Club 7 - 8.30pm
£14 per session (special events may be more)

This is not a wine school or a "serious" way to learn about wine. This is a monthly(ish) social, fun way to discover your palate and try things you may not have drunk before.

Try 8 wines, with nibbles and wine chat.
 29 January, 26 February and 26 March.



TALKS

thehorsebridge.org.uk/talks



Art and Artists 6 re-run with Richard Dean MA

Tickets £10 or **£9 for Friends**

Combining art history, biography and critical analysis you will learn about the lives and works of some important artists and topics.



Mondays 19 January - 16 March 10.00 to 12.00

Art & Artists 6 on Mondays for those that missed the original Thursday sessions.

- | | |
|-------------|--|
| 19 January | Vincent Van Gogh: 70 Days |
| 26 January | Native American Art: Then and Now |
| 2 February | Florence 1504: Art's Big Year |
| 9 February | 1891: A Year in Modern Art |
| 16 February | 'In the matter of Mark Rothko' |
| 23 February | Two British Artists: Celia Paul and Michael Armitage |
| 2 March | Oskar Kokoschka: Portraits of a Century |
| 9 March | Picasso and the Poets |
| 16 March | Pierre Bonnard: Public and Private |

Art Decades

Art Decades series of talks look to unveil the hidden lives of rock artists outside the recording studio and finds out how they coped when they were really tested to the limit.



I See a Darkness - the Meaning of Goth

22 January 6 to 7pm

So much more than a musical subculture vaguely incorporating dry ice, hair extensions and garish make-up, the spirit of Goth can permeate most everywhere and the unlikely of musical artists can summon it. Perfectly timed for a dark midwinter night.

Belle Époque - Grandeur in Rock Poster Art

5 March 6 to 7pm

With accompanying soundtrack, this talk explores the golden age of rock posters in the 60s and 70s. With full reference to the innovations happening alongside, in movie poster art and graphic design, this talk expands to the influence of everyone on poster artists.



Tickets £8
 or **£7 for Friends**

An introduction to the Life and Times of Thomas Sidney Cooper, 1803 - 1902 with Alison Coles

4 March 7 to 8pm

Tickets £7.50 or **£6.50 for Friends**

This talk will give an overview of Cooper's long life in Canterbury, London and Europe, intertwined with an introduction to the hundreds of works he left us, finishing with a Cooper Top Ten. Alison Coles is retired from the University of Kent, where she was Director of Development.



Holy Lives and Horrid Deaths, Talk with Dr Sarah James

7 March 6.30 to 8.30pm

Tickets £10 or **£9 for Friends**

Stories of the lives of saints were among the most popular narratives of the Middle Ages. Their tales were often sensational, full of unlikely supernatural incidents and gruesome deaths. In this talk we will discuss a number of saints and their images, exploring the changing ways in which their lives were represented over time to reflect the evolving needs of communities.



"I am made of Courage": The life and work of Marie Bashirtseff

8 March 2 to 4pm

Tickets £10 or **£9 for Friends**

"Beautiful, intelligent, ambitious", hugely talented and believing herself destined for fame, Marie Bashirtseff was on the brink of a successful art career when she died aged only 25. The publication of her acutely observant and self-revealing Journal was a sensation and made her one of the most famous women of her time. International Women's Day seems like the right time to tell her story.



COMEDY

Sunday 1 February 7.30pm

£15 or **£12 for Friends**

Bar opens 6.30pm

thehorsebridge.org.uk/comedy



Mark Thomas

We are excited to announce the return of Mark Thomas to The Horsebridge for an evening of stand up comedy.

Mark Thomas has worked as a performer for over 40 years. He has stuff on telly and radio which you will remember if you are of a certain age. For the younger viewers he has walked the entire length of the Israeli wall in the West Bank and created a show about it, was the Guinness Book of World Records world record holder for the most political demonstrations in one day, took the police to court 3 times and won and has won 6 Fringe Firsts for theatre work.



EXHIBITIONS

thehorsebridge.org.uk/exhibitions



Our exhibition spaces offer a diverse and dynamic programme all year. They showcase work from a wide range of artists as well as art, heritage and community projects curated by The Horsebridge. Exhibitions are **free to visit** and are open to the public.

inPRINT printmakers open exhibition

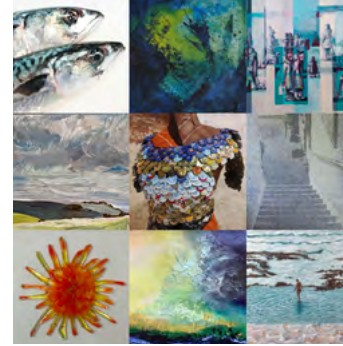
drypoint
risograph
engraving
linocut
monoprint
etching
screenprint
collagraph
lithograph
woodcut

16 JANUARY TO 8 FEBRUARY

two hundred wall hung artworks
hundreds of prints to browse
over one hundred artists

THE HORSE
BRIDGE

25 February - 9 March



Celebration of life and talent; Patrizia's inspirations

Patrizia Burgess, Luca Burgess

A showcase of art and inspirations from much loved local artist Patrizia Burgess as well as her son Luca Burgess. Exploring Patrizia's whimsical, creative and magical inspirations she drew from her life in Whitstable and beyond.

25 February - 9 March



Tell Me A Story

Joan Hobson

Tell Me a Story is an exhibition of colourful Surrealist magazine collages, each with a story to tell. You are invited to choose a collage to write or tell me about. Your stories will be displayed throughout the exhibition.

11 - 23 March



Shore Thing

Whitstable Art Society

Members of the Whitstable Art Society use a variety of media to capture the impact of changes to our shoreline. Through this exhibition, the Society hopes to inspire visitors to reflect on and discuss the rapid changes affecting our local environment.

ART AUCTION



VIEWING EXHIBITION
14 - 22 February 2026

A great opportunity to bid for unique artworks and support the work of The Horsebridge

12 - 22 March



Pop-up ARTbank

The Horsebridge
Our Pop UP ARTBank returns this spring with a focus on artists materials including stretched boards and frames made possible with donations from the Evoke Group with their CLOSING THE LOOP "Zero to landfill" initiative.

The ARTbank is a place for donated and preloved art materials, which are then offered on a 'pay what you can' basis to members of the local community.

We have created a space where free or affordable art materials are available to those who need them most. We know the positive impact creativity has on people's well being, which is why it is important to us at The Horsebridge that no one is excluded from being able to access and enjoy art and craft materials.

The ARTbank is also able to help us create a supportive and non-judgemental place for adults and children to take part in free or affordable creative sessions inspired by the materials in the ARTbank.

25 March - 6 April



PERSPECTIVES

Made in Whitstable

Now in our 16th year, we are an artists' & makers' collective based in and around Whitstable. We are delighted to present this vibrant exhibition featuring paint, pastels, prints, textiles, ceramics and glass. Come and see the many different perspectives we bring to our work.



Cult classics washing up every fortnight: an £11 ticket provides one free drink, illustrated introductions and a rare chance to see a lost pearl on the big screen. Black Pearl's curators, Mark Banville and Michael O'Connell, take a regular theme and dim the lights.

Wednesdays fortnightly at 7pm.

Doors and bar open at 6.30pm.

Tickets £11 or £10 for Friends.

Come and take part in small cinema at The Horsebridge. This season we have not only our sociable Matinees, but the new Black Pearl Cinema, the Into Film Festival and more.

MATINEES

£5 or £4 for Friends/Earlybirds

The Horsebridge Matinee film screenings are as much a social occasion as a chance to watch a film. These screenings include free tea or coffee & biscuits available when doors open 30 minutes before the film starts.



The Roses

Monday 26 January Earlybird book by 12 January

15

Life seems easy for picture-perfect couple Ivy (Olivia Colman) and Theo (Benedict Cumberbatch): successful careers, a loving marriage, great kids. But beneath the façade of their supposed ideal life, a storm is brewing – as Theo's career nosedives while Ivy's own ambitions take off, a tinderbox of fierce competition and hidden resentment ignites.

Running time: 1h 45m
Year: 2025.



The Life of Chuck

Monday 23 February Earlybird book by 9 February

15

A life-affirming story based on Stephen King's novella about three chapters in the life of an ordinary man named Charles Krantz. Told in reverse, Charles, whose life and impending death from a brain tumor coincide with a bizarre, apocalyptic event where the world seems to unravel. Revealing how simple, meaningful moments are as vast as the cosmos, making it a story about the beauty and depth found in an average life.

Running time: 1h 50m
Year: 2024.



The Choral

Monday 23 March Earlybird book by 9 March

15

1916. As war rages on the Western Front, the Choral Society in Ramsden, Yorkshire has lost most of its men to the army. The Choral's ambitious committee decides to recruit local young males to swell their ranks. They must also engage a new chorus master, and despite their suspicions that he has something to hide, their best bet seems to be Dr. Henry Guthrie (Ralph Fiennes) – driven, uncompromising, and recently returned from a career in Germany.

Running time: 1h 53m
Year: 2025.

8 Friends of the Horsebridge always pay £4 and Great/Best Friends can watch up to 10 films free each year. Just another perk for supporting our work all year!

Disaster Movies



Airplane! (1980)

Rating: 12A

14 January

A guest introduction from Whitstable writer and native Angeleno Peggy Riley, on hand to pinpoint some iconic LAX locations and some long-forgotten LA celebrities circa 1980. An evening not to be missed... Occasionally crass, politically incorrect before the term even existed and seemingly directed by three semi-hysterics, Airplane is also wildly funny, its cult status richly deserved for its merciless parody of movie producers relentlessly pushing successful film formulas almost beyond reason - which they still do today.



Two-Minutes Warning (1976)

Rating: 15

28 January

"He just butt-stroked a maintenance man off a 60-foot ladder!" Chuck Heston, king of '70s Disaster Movies, leads an all-star cast in this explosive thriller. A motiveless psychotic sniper targets the audience of a Los Angeles football stadium during a major championship game. Who will bite the big one? Starring Charlton Heston, John Cassavetes, Beau Bridges, Martin Balsam and Gena Rowlands.

Valentines Movies



Henry & June (1990)

Rating: 18

11 February

Four years before Pulp Fiction, Uma Thurman and Maria De Medeiros lit up the screen as the sirens in Philip Kaufman's erotically-charged drama, describing the romance of Henry Miller and Anaïs Nin in Thirties Paris. Starring Fred Ward as Henry Miller and also featuring Uma Thurman, Maria de Medeiros, Richard E. Grant, Gary Oldman and Kevin Spacey, Henry and June is one of the few films to successfully capture the essence of legendary literary lives.



My Bloody Valentine (1981)

Rating: 15

25 February

You survived Halloween and dodged a Black Christmas but has your lucky streak run out? Will you lose your heart to....My Bloody Valentine? Flushed with the success of Friday The 13th (1980), Paramount Pictures released this Canadian slasher, partially set 900 feet down an abandoned mine shaft. This super atmospheric and creepy tale didn't do great business upon release but is considered today as one of the very best post-Halloween slashers.

Road Movies



Five Easy Pieces (1970)

Rating: 15

11 March

A landmark movie in the New Hollywood genre with a landmark performance from Jack Nicholson, as a well-born piano prodigy scratching a living in blue-collar work before hitting the road with Rayette, his white trash girlfriend, brilliantly portrayed by Karen Black. Heading for an inevitable confrontation with his family, this is just the start of a road movie like no other, easily among the best cinema has to offer.



Race with the Devil (1975)

Rating: 15

25 March

Wedged between The Texas Chainsaw Massacre ('74) and The Hills Have Eyes ('82), this Satanic-Redneck-Occult-Biker-Road Movie is dripping with Southern Fried action and creeping dread. Two couples head off on a cross-country road trip to go skiing in Aspen, Colorado. Their new RV is kitted out with 4-track stereo, TV, Mini Bar and microwave, none of which will protect them from the pursuing Satanists who they inadvertently disturb during a stop off on the first leg of their trip! Who will be the sacrificial lambs?



**ART
BANK**

CREATE & DO ADULTS

Classes, Clubs, Workshops and Courses

Take part in a regular class, club, workshop or course and try your hand at something new. Activities include sewing, yoga, writing, pilates, comics, dance, drawing and more.

The activities below are run by independent tutors, please visit our website for the most up to date information, including how to book.

thehorsebridge.org.uk/classes



REGULAR CLASSES

MONDAY

40+ Contemporary Dance 11.30 - 12.30
Alison, Frances and Diane, fmporritt@yahoo.com
Yoga Mixed Level 19.15 - 20.15
Emma Epton, whitstablecommunityyoga@gmail.com

TUESDAY

Joanna Movement Matters: Mat Pilates 09.15 - 10.15
Joanna, www.pilatesmovementmatters.co.uk

THURSDAY

Body Control Pilates: Mixed Ability 18.30 - 19.30
Alison Cobley, alisonpilates@aol.com

FRIDAY

Fusion Dance 10.00 - 10.45
Rosita Yarboy, ryarboy@sky.com

SATURDAY

Bollyjoy 10.30 - 11.30
Ash Mukherjee, bollyjoyous@gmail.com

SUNDAY

Yin Yoga 10.00 - 11.00
Emma Epton, whitstablecommunityyoga@gmail.com

CLUBS & GROUPS

WEDNESDAY

The Rabbit Hole: bi-weekly group 09.30 - 12.00
Ann Small, just drop-in

THURSDAY

Comic Club: monthly club 19.00 - 21.00
Instagram: @whitscomicclub

COURSES

10 WEEKS starting 12 JANUARY £250

Portraiture: A 10 week course 13.00 - 15.30
with Ilse Mikula. In this 10-week course, you'll learn to create lifelike, expressive portraits while building confidence in a range of drawing and painting techniques. Contact: ilsemikula@gmail.com



The Horsebridge ARTbank is a place where donated and preloved art materials are available for you to take home by paying whatever you are able as part of our Pay What You Can scheme.

We know the positive impact of creativity on well being which is why it is important to us that no one is excluded from being able to access and enjoy art and craft materials.

The ARTbank is located on our ground floor and available to visit anytime we are open.

It operates as a Pay it Forward scheme, which helps people access free materials with no financial burdens or stigma. Anyone who is able and wants to support this initiative can contribute towards the fund by leaving a pay it forward donation.

We have recently received a substantial donation of materials including canvases, frames and boards from the Evoke Group with their CLOSING THE LOOP "Zero to landfill" initiative. We will be holding a special Pop-UP ARTbank in March for public access, but community groups can get in touch for access once we have safely sorted all of the donations.



Find out more about our amazing ARTbank
thehorsebridge.org.uk/artbank

Have your next meeting in our

**ROOM
WITH A SEA
VIEW**



available for
hire now

for £17 an hour or £75 for the day

Or perhaps one of our other spaces?
We have a range of capacities up to 220 people.

Maybe one with a balcony, aircon,
a dressing room or sinks. Enquire
within or take a look on our website.

STUDIO SESSIONS

thehorsebridge.org.uk/studio-sessions



The Horsebridge Studio Sessions are a programme of creative workshops supported by a great community of local artists and teachers. The workshops take place in our large, light and airy Studio and each session will give people the confidence to try a new skill and take part in creative and enjoyable activities as part of new group.

All equipment and materials, as well as tea and coffee, will be provided.

Don't forget the **special 10% off for Best Friends with Great Friends getting 5% off the full price.*

REGULAR SESSIONS



Monthly print club with Rochelle Bloom £30

Tuesdays 6 Jan, 3 Feb, 3 March Print Club is a social, sharing & learning group, offering a studio space where people can come to experiment and print with professional guidance and support.

10am - 2pm £27 *



Monthly oils club with Gaven Alexander £30

Fridays 23 Jan, 20 Feb, 20 March This monthly club is open to anyone who has always wanted to try oil painting or wants to spend time with others getting the most out of a medium they already enjoy.

9.30am - 12.30pm £27 *



Absolute beginners - the art class for adults with Debbie Swann £20

Tuesdays 27 Jan, 24 Feb, 31 Mar If you have been wanting to learn how to draw and paint, but don't have a clue where to start, then this class is for you! Debbie Swann from Cygnini Creative will guide you from the start of your art journey, build your confidence and help you learn the basics in these monthly sessions.

11am - 1pm £18 *



Still Life oil painting with Gaven Alexander £30

Fridays 9 Jan, 6 Feb, 6 March Learn the fundamentals of still life painting using oils. In each session you will learn about setting up your composition, capturing light and glazing to create depth in your artwork as well as how to get the best out of using oil paint as a medium.

9.30am - 12.30pm £27 *



Saturday sewing club with Linda Tiley £10

17 & 31 Jan, 7 Feb These are supportive group sessions aimed at sewists with a little experience who need help and support to gain confidence using the sewing machine. Beginners are welcome, no need to come to all sessions.

10am - 12.30pm £9 *

SINGLE SESSIONS

Abstract Cityscapes with Kim O'Neil £60

17 January Explore the pulse of the city as it rises from layers of expressive paint and unexpected textures. Experiment with dynamic abstract techniques and intriguing mediums to build a sense of urban structure and atmosphere.

10.30am - 3pm £54 *



Abstract Beachscapes with Kim O'Neil £60

21 February Capture the essence of the coast with sweeping gestures, luminous colour palettes, and experimental materials. Explore the movement of water, sand, and sky through abstraction.

10.30am - 3pm £54 *

Figure making workshop with Steve Postgate £35

Thursdays 22 Jan, 19 Feb, 19 Mar Learn how to use clay for sculpting and make a figure of animal, human or, at least, beings from this general area of the galaxy.

6.30 - 8.30pm £31.50 *



Abstract Landscapes with Kim O'Neil £60

21 March Let nature inspire your creativity as you reimagine the landscape in expressive, abstract form. Be guided through intuitive techniques and intriguing paint mediums to interpret fields, forests, and horizons in a fresh, contemporary way.

10.30am - 3pm £54 *

COURSES

Beyond the Fruit Bowl with Kim O'Neil £250

Thursdays 8 Jan - 19 March Discover the full expressive potential of still life in this 10-week acrylic painting course designed for artists of all skill levels - from curious beginners to seasoned practitioners.

10.30am - 12.30pm £225 *



Introduction to drawing and composition with Camille Serisier £250

Starts 9 Jan Introducing approaches to composition with drawing including various approaches and how to use them. Strengthen understanding of composition and design fundamentals.

1.30 - 4.30pm £225 *



Nature Sketching and painting journey with Ilse Mikula £160

Starts 12 January Deepen your observational skills and explore expressive drawing techniques, while also developing skills in watercolour painting, with a focus on both botanical and animal subjects.

10am - 12pm £144 *

Clay Creations workshop with Sue Bird and Millie Brierley £20

4 and 11 March An opportunity to get creative with clay and experience some of the basic hand-building techniques. Informal and fun. Led by Whitstable-based ceramicists.

11am - 1pm £18 *

CREATE & DO FAMILIES

thehorsebridge.org.uk/families

There are many activities for families regularly taking place in the centre, a mix of classes run by tutors who hire our spaces and sessions run by us.



PAY WHAT YOU CAN

We believe that everybody should be able to experience creativity and take part.

For families we offer our own creative sessions where you Pay What You Can. We suggest a donation, but you can just pay what you are able to. Just book a FREE ticket and, if you are able, add a donation at checkout.

10-11am Weds



for pre-schoolers 18 months+

Come and get creative with your little one painting, sticking, modelling playdough and more.

Led by Denise there will be a variety of different activities for your child to develop their artistic skills!

Sessions are FREE with a suggested donation of £5

playdough exploring
sticking painting

THE HORSE BRIDGE

Mini MAKERS club every Monday during term-time 4 to 5pm For school years R to 2

FREE suggested donation £5

A new after school club for children in years R to 2.

Just like our popular Young Makers Club, Mini Makers is an informal weekly club where younger children can explore different mediums and their own art style.

See our website for all the details.

THE HORSE BRIDGE

Young MAKERS club every Wednesday during term-time 4 to 5pm For primary school age children

FREE suggested donation £5

The Horsebridge Young Makers Club is an informal weekly after-school club where young people can learn about different mediums and explore their own art style.

Try activities like ... **Abstract painting**

Clay cactus Fabric landscapes

Dioramas Self portraits

Junk model robots

THE HORSE BRIDGE

YOUTH STUDIO STARTING 26 FEBRUARY

A new after school club for ages 11 to 16.

Youth Studio is an informal weekly after school club where young people can explore different art mediums and develop their own style.

every Thursday 4 - 5.30pm during term-time

ages 11-16

See website for details.

THE HORSE BRIDGE in partnership with ART SOCIALS

REGULAR CLASSES

Classes may be run by independent tutors who you can contact using their listed email, but you can also visit our website for the most up to date information, including how to book and other contact details.

MONDAY
NEW Mini Makers Club ??.00 - ??.00
 a weekly art club for children in school year R to 2.

TUESDAY
Art Socials Little Sensory Studio age 0-1 **09.30 - 10.30**
Art Socials Discovery Studio age 8-11 **13.00 - 14.30**
 Ruth Lapka, ruth@theartsocials.com

WEDNESDAY
Art Den 10.00 - 11.00
 a weekly creative play session from 18 months old.

La Jolie Ronde: Reception to Year 2 16.10 - 16.55
La Jolie Ronde: Years 3 to 5 16.55 - 17.40
 Vicki Sullivan, lajolierondevicki@gmail.com

Young Makers Club 16.00 - 17.00
 a weekly art club for children in school year 3 to 6.

THURSDAY
Hey Diddle Music 3-4 years 09.15 - 09.55
Hey Diddle Music 0-2 years 10.05 - 10.45
 Anita Memmott, nitamemmott@gmail.com

Little Science Society 10.00 - 11.00
 Monika Wentowska, info@thelittlescencesociety.com

NEW Youth Studio (with Art Socials) 16.00 - 17.30
 Creative sessions for ages 11 to 16.

FRIDAY
La Jolie Ronde: Preschool French 15.00 - 15.30
 Vicki Sullivan, lajolierondevicki@gmail.com

SATURDAY
Family Art Club 14.00 - 15.00
 A monthly creative workshop for all the family.

Family Art Club is for children of any age who like to be creative and want to enjoy it with parents, guardians or grandparents in a supportive and inspiring space.

FAMILY ART CLUB

PRINTED PORTRAITS
 SAT 24 JAN 2 - 3PM



FISH ART PENDANT
 SAT 28 FEB 2 - 3PM



COLLAGE CREATIONS
 SAT 28 MARCH 2 - 3PM

Suggested donation £5



THEATRE
The Chef who went on an adventure




17 February
 11.00am
£5 or £4 Friends

Join Constant Lark as they serve up a hilarious, heartwarming, and action-packed adventure for all the family!

When Chef leaves for the big cooking competition, a mix up with his bag means he's about to embark on an unforgettable journey. With every twist and turn, it's clear this adventure is shaping up to be a recipe for disaster!

Packed with thrills, spills, and a dash of chaos, The Chef Who Went On An Adventure is a deliciously fun treat that will have you shouting 'Yes Chef!' Don't miss this fantastic journey - where the unexpected is always on the menu!

Pirate Gem's Swashbuckling Adventure



18 February
 10.30 and 13.30

£10 or £9 friends

Ahoy there, me hearties! Get ready to hoist the sails for a high energy, fun filled pirate adventure with Gemma Hunt, star of CBeebies' Swashbuckle.

Perfect for children and families, this interactive show is packed with songs, dancing, games and plenty of pirate play. Will you be bold enough to walk the plank?

Join Pirate Gem for island antics that will have little pirates singing and laughing all the way home.

Fancy dress encouraged and pirate hats at the ready!

DID YOU KNOW ...

... that Friends of The Horsebridge help make a difference for so many people in our community?

Our Friends are critical to initiatives like ARTbank, Pay What You Can, supporting emerging local creatives through our Shop and just keeping the lights on and the doors open for everyone that relies on us. Being a Friend also means you can be part of shaping the future of the centre too.

Without your support all of this could soon be gone as we battle a £30,000 shortfall.

Join as a Friend from £30

Benefits include 10% off in The Horsebridge Shop, all film screenings at our Earlybird prices and special prices and invites to activities throughout the year.



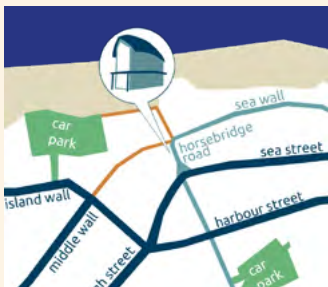
Join in the centre or on our website thehorsebridge.org.uk/friends

Great and Best Friends can get up to 10% off Studio Sessions and free Film tickets every year.

PLEASE JOIN TODAY

Charity Number 1099570

Come and visit ... stay in touch



Mondays to Saturdays
9am - 5pm

Sundays
10am - 4pm

Closed Tuesdays
(except for events)

11 Horsebridge Road,
Whitstable, Kent. CT5 1AF

thehorsebridge.org.uk
01227 281174
info@thehorsebridge.org.uk
 @thehorsebridge