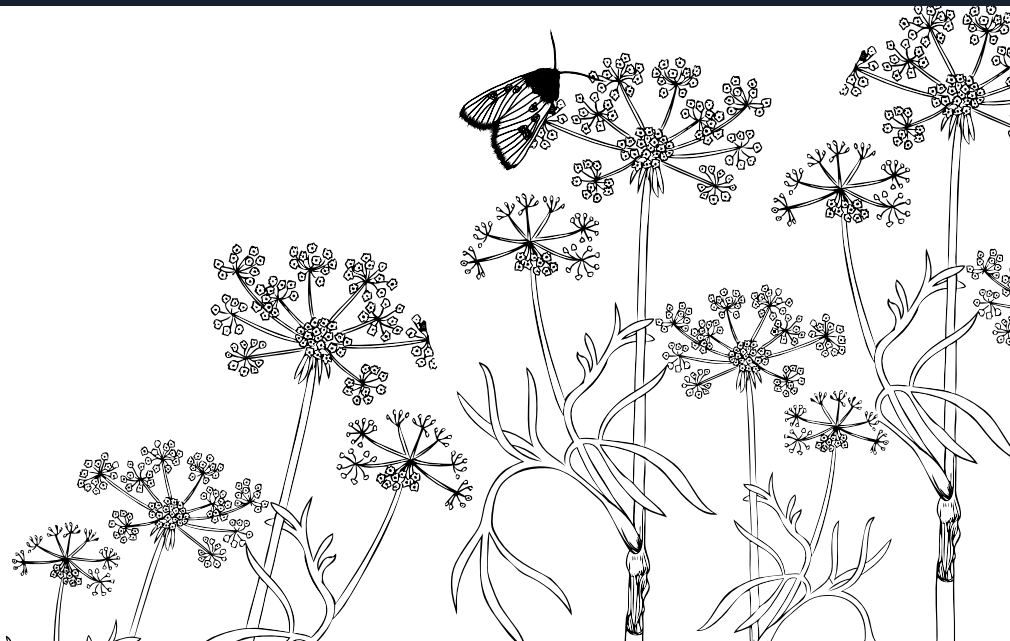


THE HORSEBRIDGE ARTS CENTRE

WHAT'S ON
JULY SEPTEMBER 2019





Copperfields
OF WHITSTABLE

Cookshop & Gifts Since 1956

Inspiration for your kitchen and home



Cookware • Homeware • Gifts • Bakeware • Furniture • Electrical • Cards

shop@copperfieldsofwhitstable.co.uk • www.copperfieldsofwhitstable.co.uk

Open 7 days a week • 93-95 High St • Whitstable • Kent • CT5 1AY • Tel: 01227 273519



FLOW & CO

BEAUTIFUL HAIR.
NATURALLY.

Present this advertisement & receive
a 10% discount on your first service

01227 271 225

3 Horsebridge Road, Whitstable, CT5 1AF
www.flowandco.co.uk    flowandcohair

Gracias by @diana_somerville_jr

betty loves bryan

Contemporary art, homeware and clothes

And THE place to buy Breton stripes!

108 High Street, Whitstable, Kent CT5 1AZ

01227 271001 / 07788 910115

bettylovesbryan@btconnect.com • www.bettylovesbryan.com



Follow us on Twitter
@lizziedesign



Like us on
Facebook



Follow us on Instagram
@betty_loves_bryan

OPENING HOURS

Mondays to Saturdays 9am - 5pm
open later for booked classes and events

Sundays 10am - 4pm

The Cafe closes 30 minutes before
the centre.

BOOK TICKETS

book online at
thehorsebridge.org.uk/tickets

or by phone on
01227 281174

11 Horsebridge Road,
Whitstable, Kent. CT5 1AF
info@thehorsebridge.org.uk



@thehorsebridge



@horsebridge

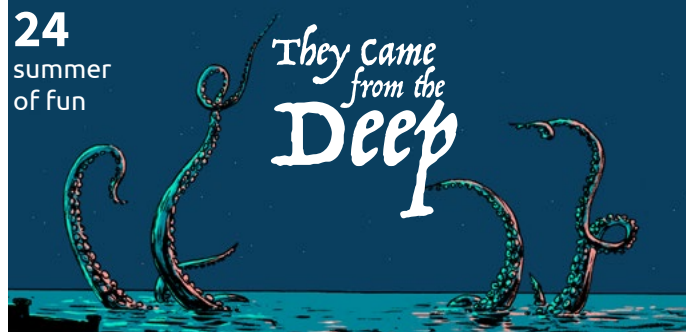
front cover illustration from
The Whitstable Seaside Guide
by Laura Watson

Charity number : 1099570

8
films



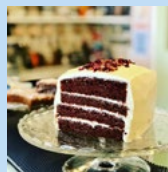
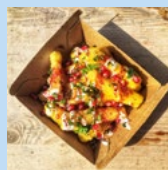
24
summer
of fun



18
rediscover
pudding
pan
rock



48
food &
drink at
Cafe
Revival



WELCOME SPRING

Summer at the Horsebridge brings a busy and fantastic programme of activities for children, teenagers and families during the summer holidays. A grant from the Foyle Foundation supports our summer exhibition 'They Came from the Deep'. Taking inspiration from local stories, strange sightings and seafaring legends, it includes making big builds for the Oyster Festival and Carnival, a Creating Space and Exhibition in our galleries and a programme of free creative activities for children.

Our Young History Makers project starts in July, with workshops for 11 – 15 year olds run by Canterbury Archaeological, Whitstable Museum and creative practitioners in August. We also have some children and young people's animation workshops running as part of our Young Digital Makers project. Securing grant funding, allows us to offer the activities free of charge.

Finally, we are excited to announce that Café Revival are at the Horsebridge! We're looking forward to their wonderful food and working alongside them.

Liz Daone
Centre Director

SUPPORTED BY



CONTENTS

- 07 **Remembering Ray Hall**
- 08 **Films**
- 11 **Talks**
- 12 **Shop**
- 13 **Clubs and Groups**
- 14 **Whitstable Seaside Guide**
- 17 **Exhibitions**
- 18 **Young History Makers**
- 24 **'They came from the Deep'**
- 26 **Adult Workshops & Classes**
- 35 **Young Digital Makers**
- 36 **Child & Family Activities**
- 44 **Repair Cafe**
- 47 **Become a Friend**
- 48 **Cafe**





Birdies Restaurant

Local fish from
Whitstable Harbour

Classic **French** Cuisine

Opening Times:

Lunch

Tues - Sun 12.00/2.30

Evenings

Tues - Mon 6.00/9.30

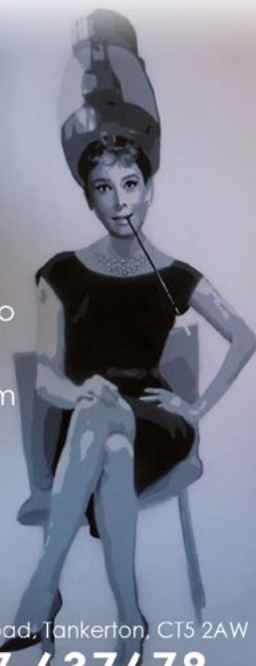
41 Harbour Street
Whitstable, Kent CT5 1AH
For reservations telephone:
01227 265337



HQ HeadQuarters

Men
Women &
Children

the salon also
provides a
massage
therapy room
and coffee
corner



133 Tankerton Road, Tankerton, CT5 2AW

01227 637678

www.hqtankerton.com

After a short illness, our beloved
Caretaker Ray Hall sadly passed
away earlier this March.


Ray was the longest standing
member of staff at the Centre,
having worked here for over 15
years. He was always the first in
and last out of the building and
took great pride in keeping the
centre clean and secure. His job
title was 'caretaker' but he was so
much more than that. He was the
very heart of the centre.

Ray was kind, caring, funny,
hardworking and able to fix just
about anything. His personality
was unique and wonderful
and he was simply the best of
colleagues.

*We loved him dearly and will miss
him immeasurably.*



Remembering Raymond Hall






Fishslab Gallery

11 Oxford Street
Whitstable

 Fishslab Art Gallery
 @fishslab1



Art Gallery
www.fishslabgallery.co.uk

HORSEBRIDGE FILM

Tickets: £5 Earlybird £4

Our Thursday **M** Matinee film screenings are as much a social occasion for many as they are a chance to watch the film. Every matinee screening includes **free tea or coffee and biscuits**.

We are now expanding the times of our film programme to include special Friday evening screenings.

JULY

M Green Book (2018)
Thursday 25 July 2pm

Set in America in 1962, this Oscar winning film tells the heart-warming true story of Tony Lip, a working-class Italian-American bouncer who takes on a job as a chauffeur for Dr. Don Shirley, a highly-educated African-American classical pianist.

2hr 10mins

Cert 12A

Earlybird price: book by 11 July.



AUGUST

M Stan & Ollie (2019)
Thursday 22 August 2pm

Starring Steve Coogan and John C. Reilly as the inimitable movie icons, Stan & Ollie is the heart-warming story of what would become the pair's triumphant farewell tour.

1hr 38mins

Cert PG

Earlybird price: book by 8 August.



SEPTEMBER

The Favourite (2018)
Friday 6 September 7pm

Early 18th century. England is at war with the French. Nevertheless, duck racing and pineapple eating are thriving. A frail Queen Anne (Olivia Colman) occupies the throne and her close friend Lady Sarah (Rachel Weisz) governs the country in her stead.

1hr 55mins

Cert 15

Earlybird price: book by 23 August.



M Vice (2018)
Thursday 19 September 2pm

'Vice' explores the epic story about how a bureaucratic Washington insider quietly became the most powerful man in the world as Vice-President to George W. Bush, reshaping the Country and the globe in ways that can still be felt today.

2hrs 9mins

Cert 15

Earlybird price: book by 5 September.



tickets: thehorsebridge.org.uk/tickets or 01227 281174

CHARITY NO. 234288

THE LINDLEY PLAYERS




The Lottie Project

BY JACQUELINE WILSON

Sat 20th July 2pm & 7pm Sun 21st July 2pm

WEBSITE www.playhousewhitstable.co.uk
 TELEPHONE 01227 272042
 BOX OFFICE Monday to Saturday, 10am - 12 noon
 RESTRICTED WHEELCHAIR ACCESS | LICENSED BAR | HEARING LOOP

PLAYHOUSE THEATRE Whitstable

APPROPRIATE FOR CHILDREN AGED 7+ JULY 2019



Liz McGown Louise Whorlow

CHIROPRACTORS

- Relieve Pain and Improve Function and Performance
- Back and Neck Pain, Headaches
- Sport Injuries, Joint Pain and Muscle Aches
- All Ages Welcome: Children, Teenagers, Adults and Elderly

EVOLUTION HEALTH 01227 273821
 62 Borstal Hill
 CT5 4NA

GCC Registered General Chiropractic Centre

Member of the British Chiropractic Association

ART TALKS

The summer series of talks on music and art covers three genres: two high-energy styles bookending a smooth and mellow vibe for midsummer. A season of rich colours and contrasts in images and music as *Art Decades* continues.

Booking is recommended and refreshments are provided.

JULY

Art Decades Eight Miles High: the Dizzy Heights of Psychedelic Art

Thursday 11th July 7 - 8.30pm

For reasons lost to history, rock concert posters resembled handbills for boxing bouts and most album covers featured anodyne PR shots of musicians well into the sixties. Something happened around 66/67, with artists responding to music in spectacular fashion and more than making up for peculiarly drab attitudes in the industry within the first decade or so of rock and roll. Perhaps they were under the influence of something.

Tickets: £7

AUGUST

Art Decades But Beautiful: the Cover Art of Blue Note

Thursday 15th August 7 - 8.30pm

If Jazz is America's Classical Music, then the lustrous shades of Blue Note's cover design are surely the classical forebears of the best in album cover art. These pioneers in design and typography deserve to be celebrated more than they are, and their wide influence - right up to the present day - clearly illustrated.

Tickets: £7

SEPTEMBER

Art Decades Destroy: the Art of Punk and Post-Punk

Thursday 12th September 7 - 8.30pm

Though 'destroy' was one of the clarion calls of punk in its heyday, it seemed to spark a lot of creativity in artists, exemplified by the likes of Jamie Reid and Alan Vega. One of the most evocative and eye-catching styles of its kind, instantly summoning up the sinews of the subculture, there is a wealth of images - and music - to explore.

Tickets: £7

HORSEBRIDGE SHOP

Visit our shop for a range of cards, prints, ceramics, glassware, homeware, bags, t-shirts, accessories and craft kits for kids. We aim to stock work that is designed and made locally and sustainably. We are also stockists for Selfie Clothing a super cool range of colour in t-shirts and caps for children.

Your purchases will directly support the centre and local artists. **HORSEBRIDGE FRIENDS** receive a 10% discount in the shop, find out more on page 47.



MEET THE MAKER

Enamel Factory is based in Herne Bay where Kate Samuels designs and makes a range of hand-painted, kiln-fired enamelware mugs, plates, bowls and more. Every item is meticulously painted and hand drawn using the Sgraffito technique which means that no two pieces are identical. Kate's cheery, colourful pieces are perfect for kids, camping and picnics on the beach.



Did you know that a neoprene wetsuit will take over 100 years to break down in landfill? **Lorna Doyle** is a local textile designer who rescues wetsuits and transforms the material into bags using traditional printing techniques. You can buy her gorgeous bags in our shop and you can also pass your unwanted wetsuit onto Lorna via the donation bin in reception.



samson & coles ltd

Modern British Jewellery Gallery



Bespoke Design

Commissions

Repairs

13 Oxford St, Whitstable, CT5 1DB 01227 277985
Opening hours: Tues - Sat 10.30am - 5.00pm

CLUBS GROUPS

Get involved in the clubs and groups that meet at **THE HORSEBRIDGE**

COMIC CLUB

One Thursday a month **18+**
11 July, 8 August, 5 September 7 - 9pm

A great monthly club for lovers of comics and graphic novels — a heady mix of industry professionals and fans of the artform.

Have a beer and read great, inspiring, new or vintage graphic fiction.

£4 to join, £2 thereafter



SUNDAY ART TALKS CLUB

Sundays

Contact Hephzibah for dates

Join Hephzibah for monthly round table discussions to exchange thoughts on any area of artistic practice of personal interest. Participants are encouraged to bring books, ideas and objects for an informal group session of looking at art.

hephzibahllewelynjoness@aol.com

**Shop locally in
Whitstable & Tankerton**

#shopbythesea
shop-by-the-sea.co.uk

The Whitstable Seaside Guide

LAURA WATSON

Available
exclusively in the
HORSEBRIDGE SHOP
for £1.00

Commissioned by
**THE HORSEBRIDGE
ARTSCENTRE**

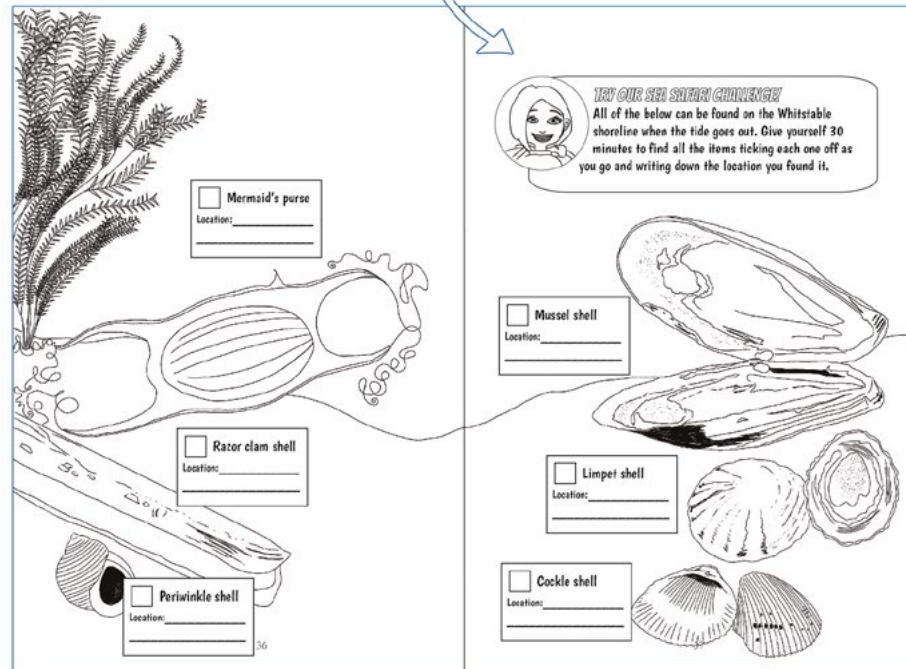
Supported by

 The Cleary Foundation


built on relationships

Learn as you
colour!

Daisy the diver helps children learn fun facts
about local animals and plants



Every page can be coloured in, even this
advert, have a go now!

Printed on sustainably sourced
paper using vegetable based inks



MARGO SELBY

Bradstowe House | 35 Middle Wall
Whitstable, Kent CT5 1BJ
01227282758

Woven Textiles & Original Artworks

—
Visitors Welcome
Weaving Studio & Shop
Monday - Friday (excl. Bank Holidays)
10am-4pm
—

For our online store, events and weaving workshops visit:

margoselby.com

PURE

indulgence by the sea
indulgence in the city

10%

Discount! Quote HB19

Expires 30.9.19

110 High Street, Whitstable, Kent CT5 1AZ
01227 772176. 07726494278 www.purebythesea.co.uk

Beauty

Holistic

Aesthetics

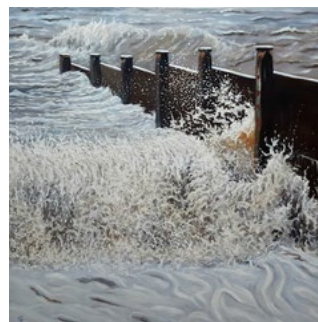


GALLERY EXHIBITIONS

Our galleries offer a diverse and dynamic exhibition programme throughout the year. They serve as a platform to showcase work from a wide range of artists as well as art, heritage and community projects curated by The Horsebridge.

The galleries are free to visit and are open to public every day apart from the first and last day of the exhibition dates which are dedicated installation and de-installation days.

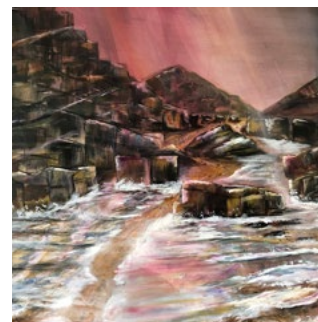
19 June - 2 July



Broken by Light
Gaven Alexander

Gaven Alexander works with detail and light. He has produced a collection of paintings showing the world around us, where light is his source of inspiration.

19 June - 2 July



Reflections Of The Self
Caroline Anderson

Caroline Anderson is a creative arts psychotherapist and a sky seascape artist. The influence of her life on Sark runs throughout her work. This is her second exhibition at the Horsebridge.

3 July - 16 July



Ways of Speaking
Justina Hyatt-Williams

With new ambitions comes new collaborations at the Horsebridge gallery, Whitstable. This exciting exhibition features artworks by a group of emerging and established local artists and creators.

THE HORSEBRIDGE ARTS CENTRE IS PLEASED TO ANNOUNCE OUR NEW YOUTH ARTS AND ARCHAEOLOGY PROJECT



YOUNG PEOPLE AGED 10-16 CAN JOIN US FOR OUR
FREE SUMMER SCHOOL 19TH-23RD OF AUGUST.

UNCOVER THE MYSTERY OF WHITSTABLE'S
ROMAN PUDDING PANS. INCLUDING WORKSHOPS
WITH CANTERBURY ARCHAEOLOGICAL TRUST,
WHITSTABLE COMMUNITY MUSEUM AND GALLERY
AND AMAZING LOCAL ARTISTS.

FULL PROGRAMME AND TICKETS COMING SOON



CANTERBURY
ARCHAEOLOGICAL
TRUST LTD



GALLERY EXHIBITIONS

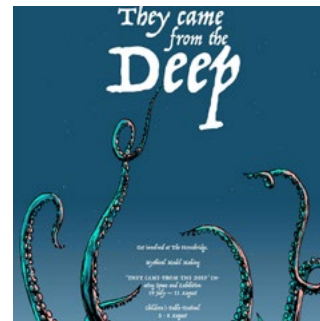
3 July - 16 July



Artist on the Boat
Paul Lester

Paul Lester travelled the world on his boat 'Nicolette of LEIGH' sketching, painting and journaling his experiences.

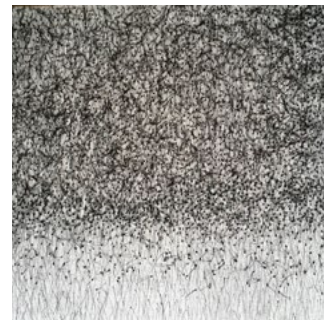
19 July - 11 August



'THEY CAME FROM THE DEEP'
HORSEBRIDGEARTS

Taking inspiration from local stories, strange sightings and seafaring legends, 'They came from the deep' is a community project that will bring to life a new mythical folk tale inspired by our remarkable seaside town.

14 August - 27 August



The Paradoxical Stitch
Hilary Ellis

The works in the exhibition reflect a preoccupation with process and its ritualistic repetitive nature. Using a limited vocabulary of mark making and subdued palette, the works bear witness to the passage of time.

Take part in our **HORSEBRIDGEARTS** 'They came from the Deep' creative space and exhibition throughout July and August including model making and storytelling workshops. Find out more about our workshops on page 18.

Hut 23 Harbour Art Gallery

26th June – 3rd July
Anne Whittle
Watercolours and Prints

3 July - 17 July
Bethany Rogers
Ceramics

17 July - 24 July
Lola McDowell
Textiles

24 July - 31 July
Janet Dance and Marion Shepherd
Mixed Media



Photo by Sue Carfrae

31 July - 7 August
Lindsay Wilkinson
Felt and Photographs

7 August - 14 August
Sarah Dunn
Pencil Drawings, Posters and
Acrylic Paintings

14 - 20 August
Anne Whittle
Watercolours and Prints

20 August onwards
To be announced via social
media

Open Thursday - Sunday and Bank Holiday Monday
Weekdays 11am - 4pm Weekends 10am - 5pm
Contact madeinwhitstable@gmail.com for further information



Made In Whitstable



GALLERY EXHIBITIONS

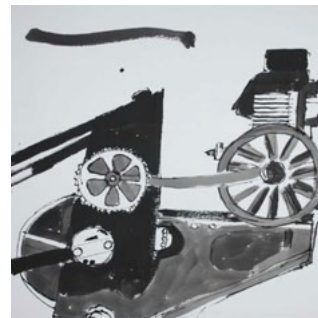
16 August - 25 August



Faces
Otto Hopf

In 'Faces' Hopf explores through multi-media painting and sculpture the richness and contradictions of human nature and relationships: intimate, political and Global.

30 August - 10 September



DUNGENESS DESERT
Tim Cousins invites ...

Invited by Tim Cousins, artists John Butterworth, Germaine Dolan, Tim Cousins, Belinda Ellis, Fiona McIntyre, Fritz Duffy, Javier Molina, Iain Herdman, Kaori Hommi, Maggie Learmonth, Richard Lawrence, Tim Craven and Sasha Leech spent time over the past 2½ years in Dungeness.

Their responses to this extraordinary place are the subject of this diverse exhibition.

11 - 24 September



Pushing the Boundaries of Landscape
Earthbound Women & Friends

A collaborative exhibition by Earthbound Women and invited artists to explore the concept of pushing the boundaries of Landscape Art



An open-air showcase of locally-created, British made, premium and hand-crafted goods and fine art. Micro eateries serve a mouth watering variety of food. Set in the working harbour of Whitstable.

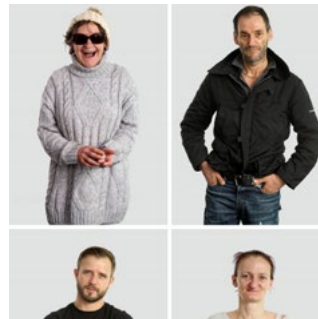
Open every weekend (weather permitting) and 5 days a week during the summer.
Pop-up Huts available to rent.

www.harbourmarketwhitstable.co.uk



GALLERY EXHIBITIONS

11 - 24 September



Portrait of Homelessness
Robert Greshoff

Portrait of Homelessness, an exhibition by photographer Robert Greshoff, offers a thought-provoking perspective on Kent's homelessness crisis through the words and images of local charity Porchlight's residents.

25 September - 8 October



Anniversaries
Locus Arts

Locus Arts members take inspiration from artistic anniversaries that fall in 2019, working in paint, ceramics, glass, and mixed media.

25 September - 8 October



The Smell of the Sea!
Ann Palmer

Ann's oil paintings depict the land, sea and sky at various times of day and year, state of the tide and weathers. Her style is impressionistic, tending towards some abstraction..

*They came from their secret hideaways
They came from the bottom of the sea
They came from the darkest of shadows*

They came from the Deep

Myths and folklore have long been entwined into the fabric of British culture and the historic town of Whitstable is no different. Taking inspiration from local stories, strange sightings and seafaring legends, 'They came from the deep' is a community project that will bring to life a new mythical folk tale inspired by our remarkable seaside town.

After the success of last year's Oyster Parade, we will again be working with the Whitstable Oyster Festival to create big build models for the annual Parade based on this theme of local myths and legends. The parade models will also be part of a summer exhibition in the Horsebridge galleries that will inform a programme of creative workshops and activities for children and families.



FOYLE FOUNDATION

Here's how you can get involved ...

'They came from the Deep'

**Creating Space and Exhibition
19 July – 11 August**

From the 19 July, the galleries will be transformed into a creating space filled with stories, pictures and models to inspire the making and decorating of the mythical models for the Oyster Parade. These magical creatures will then return to the Centre after the parade to feature in a special exhibition that will be the inspiration for the Children's Fable Festival in August.

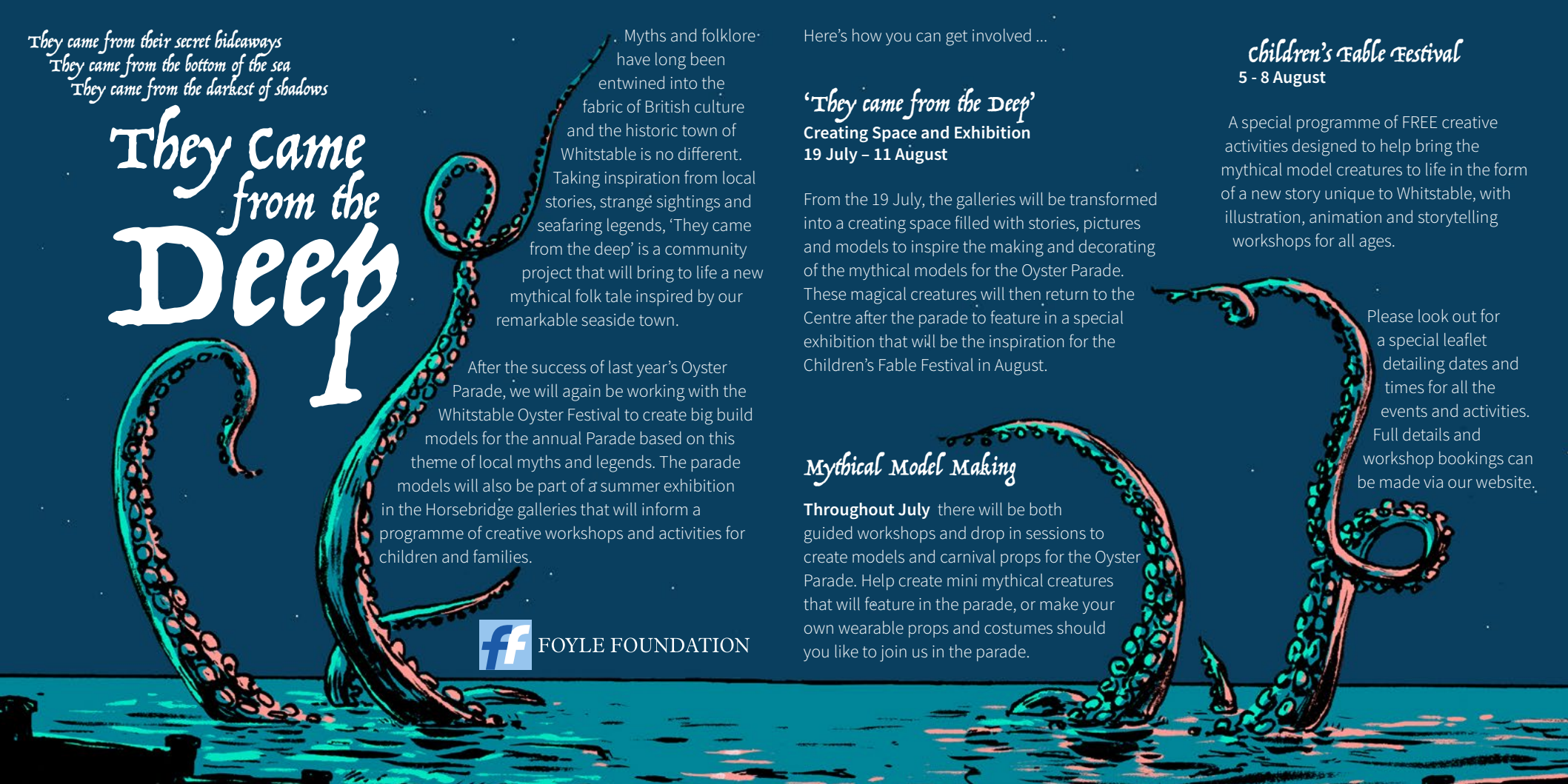
Mythical Model Making

Throughout July there will be both guided workshops and drop in sessions to create models and carnival props for the Oyster Parade. Help create mini mythical creatures that will feature in the parade, or make your own wearable props and costumes should you like to join us in the parade.

Children's Table Festival
5 - 8 August

A special programme of FREE creative activities designed to help bring the mythical model creatures to life in the form of a new story unique to Whitstable, with illustration, animation and storytelling workshops for all ages.

Please look out for a special leaflet detailing dates and times for all the events and activities. Full details and workshop bookings can be made via our website.



ADULT CLASSES

There are many activities regularly taking place in the centre. Unless indicated these are not run by the Horsebridge so please use the contact information to contact the class tutors directly for any queries or to book.

Some classes only run during term time or have specific start dates, so please make sure you check before turning up.

You can find more information about all of the classes at thehorsebridge.org.uk/classes or by contacting the tutors.

- art
- craft
- dance & fitness
- languages
- mind & body
- theatre
- well-being

MONDAY

■ Spanish Intermediate Conversation

with Kent Adult Education
10am-12pm
www.kentadulthoodeducation.co.uk

■ Yoga Basics
with Bernadette Fisher
5.45-6.45pm
www.bernadettefisheryoga.co.uk

■ Active Birth Pregnancy Yoga
with Liz Foreman
7-8.30pm
lizforeman.activebirth@yahoo.co.uk

■ Kent Coast Theatre (KCT)
with Lou Fowkes
7-9pm
info@kentcoasttheatre.co.uk

TUESDAY

■ Hatha Yoga
with Linda Thompson
10-11.30am
yogajoyful@gmail.com

■ Italian Beginners Plus
with Kent Adult Education
1-3pm
www.kentadulthoodeducation.co.uk

■ Vinyasa Yoga
with Monica Marini
1-2.15pm
momoiah@yahoo.com

■ Yoga
with Emma Epton
6.30-7.30pm
whitstablecommunityyoga@gmail.com

WEDNESDAY

■ Bead'n Banter
with Jayne Johnson
10am-12.30pm
first Wednesday of the month
www.rainbowcollection.co.uk

■ Callanetics Exercise Method
with Jennifer Watson
10-11am
watsonjennifer16@gmail.com

■ Heart Centred Yoga UK
Beginner yoga
1-2.15pm
heartcentredyogauk@gmail.com

■ Pilates
with Stephanie Fancy
6.30-7.30pm Intermediate
7.30-8.30pm Beginners
www.facebook.com/fancypilates

ADULT CLASSES

THURSDAY

■ Hatha Yoga
with Linda Thompson
10-11.30am
yogajoyful@gmail.com

■ Adult Spanish Improvers Group
with Kent Spanish Speak
10-11.15am
www.kentspanishspeak.co.uk

■ French Intermediate Parlons Français
with Kent Adult Education
11.30am-12.30pm
www.kentadulthoodeducation.co.uk

■ Tai-Chi
with Christine Hopper
12.30-1.30pm
christinehopper@talktalk.net

■ French Advanced
with Kent Adult Education
1-3pm
www.kentadulthoodeducation.co.uk

■ Flamenco Dance
with Charlotte Baynes
5.15pm-6.15pm Mixed level
charlottebaynes.com

■ Body Control Pilates
with Alison Cobley
7-8pm Mixed ability
www.pilateswithalison.net

FRIDAY

■ French for Fun
with Vicki Sullivan
9-10.30am Beginners level 3
10.45-12.15 Improvers level 1
www.languageforfun.org

■ Ballet & Contemporary Dance
with Rosita Yarboy
10-11am
www.reachperformance.co.uk

■ Adult Tap Dance
with Rosita Yarboy
11am-12pm
www.reachperformance.co.uk

SATURDAY

■ Yin Yoga
with Emma Epton
9.15-10.15am
whitstablecommunityyoga@gmail.com

■ Diva Bollywood Dance Class
with Jasmin deSylva-Smith
10.30-11.30am
jasmin@my-energise.co.uk

■ Yoga Basics
with Bernadette Fisher
11.45am-12.45pm
www.bernadettefisheryoga.co.uk

SUNDAY

■ Life Drawing
with Ron Freeman
2-4pm alternate Sundays
(contact for dates)
rgcfreeman@aol.com

■ Slow Stitch
Yvonne Fuchs
2-4pm second Sunday of the month (excluding August)
fuchs141@hotmail.com

■ Art Talks Club
with Hephzibah Llewellyn-Jones
Contact for dates
hephzibahllewellynjones@aol.com

BY APPOINTMENT

■ Life Coaching and Therapy
with Suzi Tyler
Book an appointment at any time
www.rapid-health.co.uk

COME AND EXPLORE THE WIDE RANGE OF EVENTS THE UNIVERSITY OF KENT HAS TO OFFER!



www.kent.ac.uk/events

University of
Kent

ADULT CLASSES

■ Art

Life Drawing with Ron Freeman

2-4pm Sunday

Alternate Sundays contact for dates. If you would like to join these informal sessions, please speak to Ron.

CONTACT: 07749 835036 rgcfreeman@aol.com

Art Talks Club with Hephzibah Llewellyn-Jones

Contact Hephzibah for dates Sunday

Monthly round table discussions, to exchange thoughts on any area of artistic practice of personal interest. Participants are encouraged to bring books, ideas and objects for an informal group session.

CONTACT: 07763 016941 hephzibahllewellynjones@aol.com

■ Craft

Bead 'n Banter with Jayne Johnson

10am-12.30pm Wednesday

First Wednesday of the month. Bring beadwork and exchange tips, with monthly raffle and quarterly challenges.

CONTACT: 01227 265293 gillgoldfinch@btinternet.com www.rainbowcollection.co.uk

Slow Stitch with Yvonne Fuchs

2-4pm Sunday

Second Sunday of the month excluding August.

CONTACT: fuchsy141@hotmail.com

■ Dance and Fitness

Callanetics® Exercise Method with Jennifer Watson

10-11am Wednesday

Lose at least one dress size in 10 hours! Safely strengthen your whole body, especially core and pelvic floor, and dramatically improve your posture.

CONTACT: 07966 731323 watsonjennifer16@gmail.com www.callanetics-canterbury.co.uk

Flamenco Dance with Charlotte Baynes

5.15-6.15pm Thursday

Mixed Level. Enjoy an exciting array of Flamenco styles such as Alegrias, Bulerias, Guajiras + more. Charlotte is a highly experienced and inspired teacher within the arts. Ideally, wear shoes with a firm heel.

CONTACT: 07906 685109 charlottecediz@yahoo.co.uk charlottebaynes.com

ADULT CLASSES

Ballet & Contemporary Dance with Rosita Yarboy **10-11am Friday**

For adults, run by Reach Performing Arts.

CONTACT: 01227 369891 reachacademy@sky.com www.reachperformance.co.uk

Adult Tap Dance with Rosita Yarboy **11am-12pm Friday**

Run by Reach Performing Arts.

CONTACT: 01227 369891 reachacademy@sky.com www.reachperformance.co.uk

Diva Bollywood Dance Class with Jasmin deSylva-Smith **10.30-11.30am Saturday**

An hour to let your inner Diva out! A sneaky work out for your mind and body, it's fun to follow, simple routines. Everyone welcome.

CONTACT: 07761 199179 jasmin@my-energise.co.uk

Languages

Spanish Intermediate Conversation with Kent Adult Education **10am-12pm Monday**

CONTACT: 03000 412222 www.kentadulteducation.co.uk

Italian Beginners Plus with Kent Adult Education **1-3pm Tuesday**

CONTACT: 03000 412222 www.kentadulteducation.co.uk

Adult Spanish Improvers Group with Kent Spanish Speak **10-11.15am Thursday**

For those with a basic knowledge of Spanish wishing to improve their vocab, sentence structure and use of the language in an enjoyable manner. Focusing on conversation in a relaxed and friendly group class atmosphere.

CONTACT: 07814 852111 kentspanishspeak@gmail.com www.kentspanishspeak.co.uk

French Intermediate Parlons Français with Kent Adult Education **11.30am-12.30pm Thursday**

CONTACT: 03000 412222 www.kentadulteducation.co.uk

French Advanced with Kent Adult Education **1-3pm Thursday**

CONTACT: 03000 412222 www.kentadulteducation.co.uk

French for Fun Beginners Plus with Vicki Sullivan **9-10.30am Friday**
10.45am-12.15pm Friday

Fun, sociable French classes, focussed on conversation skills following a structured course.

CONTACT: 07889495577 vicki@languageforfun.uk languageforfun.org

ADULT CLASSES

Mind & Body

Yoga Basics with Bernadette Fisher **5.45-6.45pm Monday**
11.45am-12.45pm Saturday

Classical Hatha Yoga for those new to yoga, returning, or seeking a slower class.

CONTACT: 07739 302870 bernadetteanne@aol.com www.bernadettefisheryoga.co.uk

Vinyasa Yoga with Monica Marini **1-2.15pm Tuesday**

A dynamic and energising practice open to those with a more developed Yoga practice and/or a good level of stamina. These classes are defined by principles of Vinyasa Krama (intelligent sequencing) and include exploration of alignment, arm balances and the practice of inversions.

CONTACT: 01227 273147 07913 887108 momoiah@yahoo.com

Hatha Yoga with Linda Thomson **10-11.30am Tuesday**
10-11.30am Thursday

A space during the busy and often stressful week for you to stretch in classical yoga postures. For all levels, beginners welcome.

CONTACT: 07516 494300 yogajoyful@gmail.com

Yoga with Emma Epton **6.30-7.30pm Mixed Level Tuesday**

Yoga Alliance UK registered teacher. Emma is also pregnancy yoga trained.

CONTACT: 07891 454450 whitstablecommunityyoga@gmail.com

Heart Centred Yoga UK **1-2.15pm Wednesday**

Beginner Yoga. Yoga Poses, meditation and breathing practice followed by a blissful relaxation.

CONTACT: 07955 850215 heartcentredyogauk@gmail.com

Pilates with Stephanie Fancy **6.30-7.30pm Intermediate Wednesday**
7.30-8.30pm Beginners Wednesday

Both classes for men and women. Strengthen your body, mind and spirit.

CONTACT: 07890 897851 stephaniefancy@gmail.com www.facebook.com/fancypilates Instagram: fancypilates

Tai-Chi with Christine Hopper **12.30-1.30pm Thursday**

T'ai Chi Ch'uan style is the traditional Yang form. When practiced regularly T.C.C brings noticeable improvement at physical, energetic, and emotional levels. The health benefits of a serious practice are rapidly felt in daily life. Booking essential.

CONTACT: christinehopper@talktalk.net

MERIDIAN

Meridian are inline with all your Mortgage Needs

We recommend from the whole of the market and offer a FREE no obligation initial consultation



- Mortgages
- Remortgages
- Buy to Let Mortgages
- Bridging Loans / Fast Finance
- Secured Loans
- Home Insurance
- Life Assurance
- Critical Illness
- Income Protection

Meridian Consultants

50 - 52 Oxford Street, Whitstable, Kent CT5 1DG

Call us today on **01227 26 66 88**

info@meridian-mortgages.co.uk

YOUR HOME MAY BE REPOSSESSED IF YOU DO NOT KEEP UP REPAYMENTS ON YOUR MORTGAGE.

Meridian is a trading style of Rosemount Financial Solutions Ltd who are an appointed representative of Intrinsic Financial Planning Limited (Registered in England 5372217) and Intrinsic Mortgage Planning Limited, which are authorised and regulated by the Financial Conduct Authority. Intrinsic Financial Planning Ltd and Intrinsic Mortgage Planning Limited are entered on the FCA register under reference 440703 and 440718.

ADULT CLASSES

Body Control Pilates with Alison Cobley **7-8pm** Mixed Ability, beginners welcome **Thursday**

Practice pilates regularly and your body will become stronger, toned and more flexible. Suitable for people of all ages and levels of fitness. Small class sizes - maximum 12 participants.

CONTACT: 07903 010816 alisonpilates@aol.com www.pilateswithalison.net

Yin Yoga with Emma Epton **9.15-10.15am** **Saturday**

Yin Yoga targets the deep connective tissues of the body. Connecting to the meridian lines in the body and encompasses Daoist principals and traditional yoga.

CONTACT: 07891 454450 whitstablecommunityyoga@gmail.com

■ Theatre

Kent Coast Theatre (KCT) with Lou Fowkes **7-9pm** **Monday**

Engaging community & inspiring potential, KCT is a community theatre company based at the Horsebridge. Productions and acting workshops throughout the year for adults 16+.

CONTACT: 01227 280314 info@kentcoasttheatre.co.uk www.kentcoasttheatre.co.uk

■ Well being

Active Birth Pregnancy Yoga with Liz Foreman **7-8.30pm** **Monday**

A friendly class that aims to help you meet the challenges and transformations of pregnancy and birth with confidence and a smile.

CONTACT: 01227 275597 lizforeman.activebirth@yahoo.co.uk www.lizforeman-yoga.com

Life Coaching and Therapy with Suzi Tyler **Book an appointment** **anytime**

Suzi Tyler, Breakthrough Session with Hypnotherapy, NLP & EFT Matrix Re-imprinting. CNHC & BIH Registered. Clear hidden limits that spoil your health & happiness. Specialism: Panic Attacks.

CONTACT: 07836 635233 www.rapid-health.co.uk

CHARITY NO. 234288



THE LINDLEY PLAYERS

SCARAMOUCHE JONES

By Justin Butcher

19th - 21st September, 7.45pm

AN AMATEUR PRODUCTION BY THE LINDLEY PLAYERS

WEBSITE www.playhousewhitstable.co.uk

TELEPHONE 01227 272042

BOX OFFICE Monday to Saturday, 10am - 12 noon

RESTRICTED WHEELCHAIR ACCESS | LICENSED BAR | HEARING LOOP



CONTAINS
THEMES WHICH
MAY BE
UPSETTING TO
SOME
SEPT 2019



Quarter page
62mmx62mm

Full page
130mmx130mm

advertise here

Book for one year and only pay for nine months.

This programme has a print run of 7,000.

It is distributed to local businesses, libraries, schools and the Friends of the Horsebridge.

An advert in our programme represents excellent value for money and helps us continue to serve the local community.

Contact helen@thehorsebridge.org.uk

Half page
130mmx62mm

ANIMATION WORKSHOPS

WITH YOUNG ANIMATORS CLUB

6 August 10am till 12pm ages 8 to 11

7 August 10am till 3pm ages 12 to 16

Engaging young people
in digital creativity

Yes

YOUNG DIGITAL MAKERS

BOOK NOW!
LIMITED SPACES

@THE HORSEBRIDGE CENTRE

THESE WORKSHOPS ARE FUNDED BY BIG
LOTTERY COMMUNITY FUND.
A DONATION OF FIVE POUNDS IS SUGGESTED

THE HORSEBRIDGE
ARTS CENTRE



THE HORSEBRIDGE ARTS CENTRE

parent and toddler messy ART play

every
Thursday
9.30 to 10.30am

£3 including a child's cold drink

Our messy play group is perfect for small budding artists! All materials will be provided for an hour of creative play, no minimum age but children must be accompanied by a parent or guardian.

4th and 11th July

Special Oyster Parade workshops to help imagine, create and build characters that will feature in this year's Oyster Festival Parade.

Summer holidays

look out for our spectacular family summer activities

5th September

Apple decorations

12th September

Autumn Wreaths

19th September

Leaf Garlands

26th September

Squishy squashy painting

CHILDREN'S CLASSES AND WORKSHOPS

There are a range of activities regularly taking place in the centre for children. Unless indicated these are not run by The Horsebridge so please use the contact information to contact the class tutors directly for any queries or to book.

Some classes only run during term time or have specific start dates, so please make sure you check before turning up.

You can find more information about all of the classes at thehorsebridge.org.uk/kids or by contacting the tutors.

- art
- drama
- languages
- music
- well-being

MONDAY

■ **Hey Diddle Music**
with Anita Memmott
9.20-10.05am 18months+ & 10.15-11am 0-18 months
nitamemmott@gmail.com

TUESDAY

■ **Musical Bumps Mixed Age**
with Kirsty Ottaway
10am 2yrs+ & 10.45am under 2yrs
www.musicalbumps.com

WEDNESDAY

■ **Baby Moonbeams, Little Moonbeams & Little Music Stars**
with Lucy Weston
10-10.40am walking to 3 years
10.50-11.30am walking to 3 years
11.40-12.20am 3 mths to walking
www.littlemusicstars.net

■ **La Jolie Ronde French for Children**
with Vicki Sullivan
3.45-4.30 8-9 yr old
4.30-5.15pm 4-7yr old
lajolieronde.co.uk

■ **Playtime Theatre**
with Sara Kettlewell
4-5pm 7-11yrs & 5-6.15pm 11-18 yrs
www.playtimetheatre.co.uk

THURSDAY

■ **HORSEBRIDGEARTS Parent and Toddler Messy Art Play**
with Nicola Priest
9.30-10.30am (term time)
thehorsebridge.org.uk/tickets

■ **HORSEBRIDGEARTS Young Makers Club**
with Nicola Priest
4-5pm 6yrs + (term time)
thehorsebridge.org.uk/tickets

FRIDAY

■ **Baby Massage & Sensory Baby Yoga**
with Sophie of Mumma and Beans
10-10.45am 0-5months
11-11.45am babies from 4months
sophie@mummasandbeans.co.uk

SATURDAY

■ **La Jolie Ronde French for Children**
with Vicki Sullivan
9.15-9.45am 0-4 years
9.45-10.30am 9-11 years
10.30-11.15 7-8 years
11.15am-12pm 5-7 years
lajolieronde.co.uk



Want to improve your existing space?
Book a one hour no obligation consultation
with us for your £40 donation to the
Horsebridge Centre.
You'll have some new ideas and the
Horsebridge will be £40 better off.

Tweet us @spacemakerarch or
call Louisa on 07846 851694.
www.spacemakerarchitects.co.uk

Hey Diddle Music

We sing, we move, we learn, we smile!

Music classes for babies through to pre-schoolers at
The Horsebridge Centre on Monday mornings.

Specialist Dalcroze Eurhythmics teacher at
Guildhall School of Music and Drama

Contact Anita Memmott
nitamemmott@gmail.com 07710 575 390

Holiday Club

We provide out of school care for children ages 5 to 11 years during the school Holidays at
Whitstable Junior School.

Open 8.00 - 18.00 Monday to Friday

Freshly cooked healthy meals are available each day.

For further information or to book, please visit our website www.kindergartenkids.co.uk

Alternatively, call head office on **01227 772200**



CHILDRENS CLASSES AND WORKSHOPS

■ Art

Parent & Toddler Messy Art Play with Nicola Priest **9.30-10.30am (term time) Thursday**
HORSEBRIDGEARTS Come and join artist, Nicola Priest for an hour of creative play. All materials
and a cold drink provided. Please see page 36 for dates and full listing of activities.
CONTACT: 01227 281174 thehorsebridge.org.uk/tickets

Young Makers Club with Nicola Priest **4-5pm ages 6+ (term time) Thursday**
HORSEBRIDGEARTS Come and take part in our weekly after school club with artist Nicola Priest and
learn how to make and craft a variety of small projects. Please see page 40 for dates and full listing of
activities.
CONTACT: 01227 281174 thehorsebridge.org.uk/tickets

■ Drama

Playtime Theatre with Sara Kettlewell
4-5pm 7-11 years Wednesday
5-6.15pm 11-18 years Wednesday

Fun drama workshops run by one of the South East's leading children's theatres. Term-time only.
CONTACT: 01227 266272 07758 729129 playtime@dircon.co.uk www.playtimetheatre.co.uk

■ Languages

La Jolie Ronde French for Children with Vicki Sullivan
3.45-4.30pm 8-9 years Wednesday
4.30-5.15pm 4-7 years Wednesday
9.15-9.45am 0-4 years Saturday
9.45-10.30am 9-11 years Saturday
10.30-11.15am 7-8 years Saturday
11.15am-12.00pm 5-7 years Saturday

The fun way to learn French with action songs, rhymes, role-play and stories. FREE trial session for all
new families. Get in touch to find the right class for your child. Term time only. Booking required for all
classes except 0-4 years.

CONTACT: 01227 779126 07889 495577 lajolierondevicki@gmail.com www.lajolieronde.co.uk

THE HORSEBRIDGE ARTS CENTRE

Young MAKERS club

every
Thursday
during term-time
4 to 5pm

For ages 6+

£3 per child or £5 for two.

Come and take part in our weekly after school club, crafting and making a variety of creative small projects. Booking with reception is advised.

4th and 11th July

Special Oyster Parade workshops to help imagine, create and build characters that will feature in this year's Oyster Festival Parade.

Summer holidays

look out for our spectacular family summer activities

5th September

Watercolour and crayon resist artwork

12th September

Magazine strip collage

19th September

Making castles

26th September

Paper sculptures

CHILDREN'S CLASSES AND WORKSHOPS

■ Music

Hey Diddle Music with Anita Memmott

9.20-10.05am 18mths +, booking required
10.15-11am 0-18 mths, drop in class

Monday
Monday

CONTACT: 07710 575390 nitamemmott@gmail.com

Musical Bumps Mixed Age with Kirsty Ottaway

10am 2yrs+
10.45am under 2yrs

Tuesday
Tuesday

High quality music classes for babies to pre-school children. If you are looking for a class for babies under 1 year please get in touch.

CONTACT: 0845 0943786 07934 921072 canterbury.faversham@musicalbumps.com www.musicalbumps.com

Baby Moonbeams & Little Music Stars with Lucy Weston

10-10.40am walking-3yrs
10.50-11.30am walking-3yrs
11.40-12.20am 3mths-walking

Wednesday
Wednesday
Wednesday

Pre-school music classes.

CONTACT: 07946 193733 whitstable@littlemusicstars.net www.littlemusicstars.net

■ Well being

Baby Massage & Sensory Baby Yoga with Sophie

10-10.45am 0-5 mths
11-11.45am babies from 4 mths

Friday
Friday

Baby Massage is suitable for babies from birth to 5 months and is a calm and gentle first step class. Sensory Baby Yoga course is suitable for babies from 4 months old. It is a really fun and lively class.

CONTACT: 07930 902588 sophie@mummasandbeans.co.uk

Following on from the fantastic Whitstable Seaside Guide exhibition, the Seaside Guide is now available exclusively from the HORSEBRIDGE SHOP. Packed with illustrations and fascinating facts from along the seashore.

EVOLUTION HEALTH

- Audiology
- Bowen Technique
- Chiroprody / Podiatry
- Chiropractic
- Counselling Psychology
- Homeopathy
- Humanistic Counselling
- Hypnotherapy
- Therapeutic & Sport Massage



62 Borstal Hill
Whitstable
CT5 4NA
TEL: 01227 273821

Integrative Body Psychotherapy



Energy Work
Breath Work

ruthhoskinsukcp@gmail.com
www.body-psychotherapy.org.uk
www.counselling-directory.org.uk

Ruth Hoskins MA UKCP 07742 295506

2019 is the year of the periodic table and to celebrate this we will be hosting an arts and science inspired exhibition designed around young people in the October half term.

The Horsebridge galleries will be turned into hub of activity with science experiments, creative workshops and an accompanying exhibition.

You can also get involved before then by taking part in an exciting competition inspired by the theme of the periodic table. Please see details below:

CHARITY NO. 234288

THE LINDLEY PLAYERS

SONGS OF THE STAGE AND SCREEN

THURSDAY 4TH - SATURDAY 6TH JULY
7:45 PM | SATURDAY MATINEE AT 2:30 PM

WEBSITE www.playhousewhitstable.co.uk
TELEPHONE 01227 212042
BOX OFFICE Monday to Saturday, 10am - 12 noon
RESTRICTED WHEELCHAIR ACCESS | LICENSED BAR | HEARING LOOP

MATINEE IS APPROPRIATE FOR ALL AGES.
EVENING SHOWS CONTAIN SOME ADULT THEMES.




The Periodic Table of

To celebrate the International Year of the Periodic Table, we are building a Periodic Table of Kent from photographs taken from around the county.



The elemental symbols can be from anywhere, from the sign of your local shop, iconic Kent landmarks, a drawing on a sandy beach, or even using yourselves to represent the letters – the possibilities are endless as long as it's you who has taken the photo ☺
Be as creative as possible!

Example: Ramsgate could be Radium



To complement the Periodic Table of Kent, we are inviting schools and community groups to submit their own Periodic Table. This may be your own version of the classic periodic table e.g. in fabric, or 3D, or even a completely new take on the Periodic Table.
The Periodic Table of biscuits, or cartoon characters anyone?

For more information and to check out the latest entries go to
www.RSCKent.wixsite.com/IYPT
Deadline for all entries: 31st July 2019



ROOM HIRE AT HORSEBRIDGE

Rooms over three floors, serviced by a lift and offering accessible space for disabled people. A staffed reception to welcome and assist visitors along with a cafe providing refreshment throughout the day.

Room name	The Hub	W3	W5	W6	Performance Space	
					<i>Mon-Fri</i>	<i>Sat & Sun</i>
Hourly rate	£16	£12.50	£12.50	£12.50	£18	£26
Day rate	£90	£60	£60	£60	-	-
Room dimensions (m)	6.3 x 7.9	3.5 x 6	3.5 x 6	3.2 x 5 x 4.3	9.5 x 12	
Floor area (m ²)	49	21	21	17.5	114	
Theatre seating capacity	40	16	16	15	150	
Boardroom seating capacity	24	8	8	12	50	
Standing capacity	45	20	20	20	240	

W3 and W5 offer sea views. The Hub and Performance Space are equipped with air conditioning.



WHITSTABLE REPAIR CAFÉ

REPAIR THINGS. SHARE KNOWLEDGE. GROW TOGETHER.

UPCOMING EVENTS

SAT 20TH APR 10-12PM. HORSEBRIDGE CENTRE

SAT 18TH MAY 10-12PM. HORSEBRIDGE CENTRE

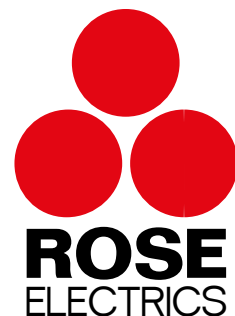
SAT 15TH JUN 10-12PM. STREAM WALK
COMMUNITY GARDEN

SAT 20TH JUL 10-12PM. UMBRELLA CENTRE

SAT 21ST SEP 10-12PM. UMBRELLA CENTRE

SAT 19TH OCT 10-12PM. HORSEBRIDGE CENTRE

SAT 16TH NOV 10-12PM. UMBRELLA CENTRE



reliable
female
domestic
electrician

07395 492361

rose@roseelectrics.co.uk
www.roseelectrics.co.uk



A friendly, independent family
run health shop trading in
Whitstable since 1970

81 High Street, Whitstable, Kent CT5 3DY

01227 278 550

whitnutcentre@gmail.com

@whitstablenutri

FOR INFORMATION AND UPDATES FOLLOW US ON FACEBOOK @repaircafewhitstable

CGS Blinds & Shutters

SHUTTERS



VERTICAL



VENETIAN



ROLLER



PERFECT FIT



PLEATED



ROMAN



OFFICE
OR HOME

◆ CONSERVATORY ROOFS ◆

Come and visit our Showroom, and choose from Materials/Fabrics.

Expert advice with 1st Class service.

All blinds are custom made to your needs.

Supply Only Or Surveyed And Installed

146 Tankerton Road, Whitstable, Kent, CT5 2AW

01227 278643

www.cgsblinds.co.uk



HORSEBRIDGE FRIENDS

We really need Friends and we don't just mean the social media kind.

Pick up a copy of our 2018 Year in Review and you'll see we are doing really well at generating income, but you'll also notice that without the support of donations and Friends we just wouldn't be able to offer the services we do.

We are open seven days a week for 50 weeks of the year and welcome over 100,000 visitors through our doors. We work hard to find funding to support the range of exhibitions, classes, workshops and events that we offer. Without support from Friends and donations we wouldn't be able to support exhibitions like the stunning Think Of Me and thought provoking Waste Line exhibitions last year.

If **just 1% of the visitors** we anticipate for 2019 became Friends they would be helping us to generate nearly **10% of our income** for the year.

Friend - £20 a year (one person).

Joint Friends - £30 a year (two people)

JOIN TODAY

To join the Friends please visit thehorsebridge.org.uk/friends or speak to us at the front desk in the centre.

BENEFITS



Being a Friend is more than just a **warm glow in your heart**, it also comes with other useful benefits ...

10% off in the HORSEBRIDGE SHOP

10% off in Cafe Revival

Invitations to special events

Special Friends updates

Discount tickets on selected films and events

... all that for **just £20 a year** for an individual membership.

By supporting us as a Friend you are helping us show funders how much The Horsebridge is valued and wanted by its community.

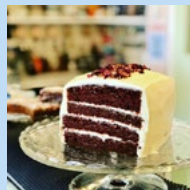
CAFÉ REVIVAL

@THEHORSEBRIDGE

OPENING IN JULY FOR ALL OF YOUR FOODIE NEEDS WITH BREAKFAST, LUNCH AND ALL DAY CAKES, BAKES AND LIGHT BITES FRESHLY COOKED ON SITE.

- * MONDAY - SUNDAY
- * EAT IN OR TAKEAWAY
- * KIDS CORNER
- * FAMILY, CHILD AND TEEN PAY IT FORWARD

PROFITS GO TOWARDS RAISING MENTAL HEALTH AWARENESS AND CHALLENGING STIGMA



FREE TEA!

AS A THANK YOU FOR READING
THE SUMMER 2019 BROCHURE
YOU CAN CLAIM A FREE TEA.

JUST HAND IN THIS VOUCHER AT
THE CAFÉ!

