

THE HORSEBRIDGE ARTS CENTRE

WHAT'S ON
JANUARY **MARCH** 2020





Copperfields
OF WHITSTABLE

Cookshop & Gifts Since 1956

Inspiration for your kitchen and home



Cookware • Homeware • Gifts • Bakeware • Furniture • Electrical • Cards

shop@copperfieldsofwhitstable.co.uk • www.copperfieldsofwhitstable.co.uk

Open 7 days a week • 93-95 High St • Whitstable • Kent • CT5 1AY • Tel: 01227 273519



FLOW & CO

BEAUTIFUL HAIR.
NATURALLY.

*Present this advertisement & receive
a 10% discount on your first service*

01227 271 225

3 Horsebridge Road, Whitstable, CT5 1AF
www.flowandco.co.uk    flowandcohair

Gracias by Alicia Serrano for Designs

betty loves bryan

Contemporary art, homeware and clothes

And THE place to buy Breton stripes!

108 High Street, Whitstable, Kent CT5 1AZ

01227 271001 / 07788 910115

bettylovesbryan@btconnect.com • www.bettylovesbryan.com



Follow us on Twitter
@lizziedesign



Like us on
Facebook



Follow us on Instagram
@betty_loves_bryan

OPENING HOURS

Mondays to Saturdays 9am - 5pm
open later for booked classes and events

Sundays 10am - 4pm

The Cafe closes 30 minutes before the centre.

The centre is closed for Christmas
22 December - 6 January

BOOK TICKETS

book online at
thehorsebridge.org.uk/tickets

or by phone on
01227 281174

11 Horsebridge Road,
Whitstable, Kent. CT5 1AF
info@thehorsebridge.org.uk



front cover image
Dark Gate a 4 block colour reduction
linocut by Erik Gaskell
as part of the Print Show from 11 January
to 2 February, see page 17 for details

Charity number : 1099570

14

Young History Makers
Pudding Pan Rock



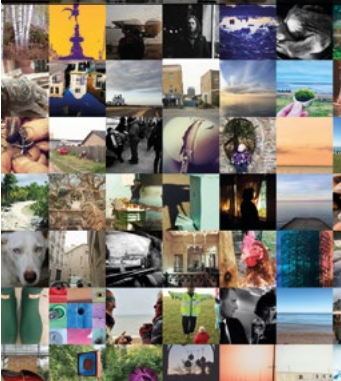
43

Alternative Valentines
Quiz & Curry fundraiser



18

this is what I want to
show you #LMSY2020



8

Sunday screenings



WELCOME WINTER

Over the last few months we have had fantastic support with fundraising to meet our day to day costs. We have been very successful in securing grant funding for our creative community projects but grants don't generally pay for things like utilities, cleaning or covering our reception desk. Most of these costs are met through renting our spaces and our shop but we do need to raise about £2,000 every month to keep the doors open seven days a week.

The **Horsebridge Art Auction** saw 63 wonderful donated pieces of Art sold over five frantic days of bidding – both in person and online, which raised an incredible **£4358** with **£218** going to Pilgrims Hospice.

We have revamped our **Friends** scheme, offering three different levels of commitment and some great benefits including **10% off in Revival Café** and our **Shop** as well as cheap or free film tickets. Do take a look at the details on [page 47](#) or our website where you can **join up** straight away.

Cafe Revival are now firmly established and we are loving the wonderful food, drink, and setting that they have brought to the centre. We will be holding our first joint event in February, an **Alternative Valentines Quiz and Curry** fundraising evening. Grab a team of up to six people and prepare to battle!

A huge **thank you for all your support** – without it we couldn't provide or support all the great activities, exhibitions and events that we do!

Liz Daone, Centre Director

SUPPORTED BY



JANUARY **MARCH** 2020 5

CONTENTS

- 07 **Films**
- 11 **Talks**
- 12 **Shop**
- 14 **Young History Makers**
- 15 **Clubs and Groups**
- 17 **Gallery Exhibitions**
- 18 **#LMSY2020**
- 24 **Autumn Highlights**
- 25 **Auction fundraiser**
- 26 **Adult Classes & Workshops**
- 39 **Child & Family Activities**
- 43 **Alternative Valentines Quiz and Curry fundraiser**
- 44 **Repair Cafe**
- 47 **Become a FRIEND**
- 48 **Cafe**



Birdies

Restaurant

Local fish from
Whitstable Harbour

Classic **French** Cuisine

Opening Times:

Lunch

Tues - Sun 12.00/2.30

Evenings

Tues - Mon 6.00/9.30

41 Harbour Street
Whitstable, Kent CT5 1AH
For reservations telephone:
01227 265337

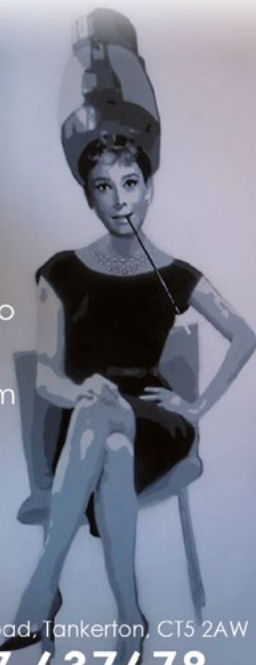


Hq

HeadQuarters

Men
Women &
Children

the salon also
provides a
massage
therapy room
and coffee
corner



133 Tankerton Road, Tankerton, CT5 2AW

01227 637678

www.hqtankerton.com

HORSEBRIDGE FILM

M Thursday matinees: £4 Earlybird £3
Sundays and Fridays: £5 Earlybird £4

We have recently been awarded funding from **National Lottery Awards for All** to support our regular matinee film screenings. This means that we will be replacing our fifteen-year-old projector for our film events – we are really looking forward to being able to improve the viewing experience of our audiences.

Our winter season of films include a Sunday morning screening of family film *The Whale Rider* followed by a matinee of *FEMINISTA* Film Festival screening. Our Friday film this season is *Jellyfish*.

Our Thursday **M** Matinee film screenings are as much a social occasion for many as they are a chance to watch the film. Every Thursday matinee screening includes **free tea or coffee and biscuits**, sorry this doesn't apply to Sunday.



tickets: thehorsebridge.org.uk/tickets or 01227 281174

JANUARY

M **Wildlife (2018)**
Thursday 23 January 2pm

Fourteen-year-old Joe is the only child of Jeanette and Jerry - a housewife and a golf pro - living a seemingly idyllic life in 1960s Montana. His family's carefully constructed façade is about to come crashing spectacularly down however, when Jerry loses his job and his sense of purpose.

1hr 44mins

Cert 12A

Tickets £5, for earlybird £4 price: book by 9 January.



FEBRUARY

M **Yesterday (2019)**
Thursday 27 February 2pm

Jack Malik was just another struggling songwriter...but that was yesterday. After a mysterious blackout, Jack discovers he is the only person on earth who remembers The Beatles! As he rockets to fame by passing off the Fab Four's songs as his own, Jack risks losing Ellie – the one person who has loved him and believed in him from the start.

1hr 53mins

Cert 12

Tickets £5, for earlybird £4 price: book by 13 February.



Fishslab Gallery

11 Oxford Street
Whitstable
CT5 1DB

www.fishslabgallery.co.uk



fishslab art gallery



@fishslab1

HORSEBRIDGE FILM

MARCH

**Sunday Family Film in conjunction with
International Women's Day**

Whale Rider (2002)

Sunday 8 March 10.45am

A young mother dies in childbirth along with her newborn male son, who was supposed to be the Whangara tribe's next leader. His twin sister, Pai, manages to survive and is brought up by her grandparents. She enlists the help of her uncle to teach herself the art of chieftom and it appears that she possesses a natural leadership ability.

1hr 37mins

Cert PG

Tickets £5, for earlybird £4 price: book by 23 February.



FEMINISTA FILM FESTIVAL, UK TOUR

Sunday 8 March 2pm

Celebrate International Women's Day by watching an inspired selection of short films celebrating the accomplishments of women and girls from around the world. Programme includes 8 festival favourites - stories from Wales to Pakistan, from wild swimmers to pizza makers. Inspiration guaranteed!

1hr 35mins

Suitable for ages 15+

Tickets £5, for earlybird £4 price: book by 23 February.

Jellyfish (2018)

Friday 13 March 7pm

Between being bullied at school, put upon by her overbearing boss at the local arcade and having to look after her younger brother, sister and manic-depressive mother, life isn't easy for Sarah Taylor [15]. However, when Sarah's drama teacher channels her ferocious and volatile energies in to a stand-up comedy routine for the graduation showcase, Sarah discovers that she may have a hidden talent. Filmed in Margate with an amazing performance by Liv Hill.

1hr 41mins

Cert 15

Tickets £5, for earlybird £4 price: book by 28 February.



M Mrs. Lowry & Son (2019)

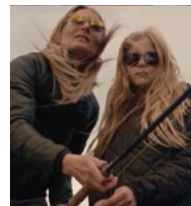
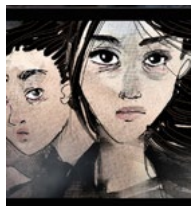
Thursday 26 March 2pm

This is the beautiful, delicate, intimate and amusing story of the brittle but vital relationship between L. S. Lowry - one of the greatest artists of the 20th century - and his bedridden, unhappy and controlling mother. Engrossing and entertaining, Mrs. Lowry & Son offers up a veritable masterclass in acting, with Vanessa Redgrave and Timothy Spall spellbinding as a mother and son separated by art and ambition.

1hr 31mins

Cert PG

Tickets £5, for earlybird £4 price: book by 12 March.



tickets: thehorsebridge.org.uk/tickets or 01227 281174

JANUARY **MARCH** 2020 9



Liz McGown

Louise Whorlow

CHIROPRACTORS

- ❑ Relieve Pain and Improve Function and Performance
- ❑ Back and Neck Pain, Headaches
- ❑ Sport Injuries, Joint Pain and Muscle Aches
- ❑ All Ages Welcome: Children, Teenagers, Adults and Elderly

EVOLUTION HEALTH 01227 273821
62 Borstal Hill
CT5 4NA

GCC Registered
General
Chiropractic
Council



Member of the
British Chiropractic Association

HORSEBRIDGE TALKS

This season we welcome another season of talks from Paul Elliott along with a new season of *Art Decades*.

Paul Elliott introduces a series of talks which open a debate on mental health. These talks will include guest speakers and the opportunity to engage in discussion with an emphasis on how creativity can be used for positive change.

The 2020 series of *Art Decades* talks attempt to unveil the hidden lives of rock artists outside the recording studio and finds out how they coped when they were really tested to the limit.

Booking is recommended.

FEBRUARY

Art Decades: But Beautiful - the Cover Art of Blue Note

Wednesday 5 February 7 - 8pm

If Jazz is America's Classical Music, then the lustrous shades of Blue Note's coverdesign are surely the classical forebears of the best in album cover art. These pioneers in design and typography deserve to be celebrated more than they are, and their wide influence - right up to the present day - clearly illustrated.

Tickets: £7

Once Upon A Time

Wednesday 12 February arrive 7pm for 7.30pm

Paul Elliott explores how narrative plays an important part in our mental health and what we can do to change the way we respond to life events. If how we see the world forms the way we feel then perhaps it's time to start rewriting our own stories.

FREE

JANUARY

Happy New Fear

Wednesday 15 January arrive 7pm for 7.30pm

Paul Elliott delves back into the past to discover why we seem to be so frightened of nearly everything. From atomic bombs to over polished floors, the seventies, newspapers and politicians seem to have a lot to answer for.

FREE

Art Decades: Days In The Life: tuning in to the counterculture

Wednesday 19 February 7 - 8pm

A look at the heady days of the mid-late Sixties where UK and US bands were surrounded by exciting new voices in art, literature and politics. Days in the Life explores how a radical consensus was formed and laid down the strongest challenge yet to the Establishment and how rock royalty moved into the vanguard of this movement.

Tickets: £7

tickets: thehorsebridge.org.uk/tickets or 01227 281174

JANUARY MARCH 2020 11

HORSEBRIDGE SHOP

Almost all of the stock that we sell in the shop is designed and made in the Kent (mostly in Whitstable and Herne Bay). We really want the shop to not only support the running of the centre but also the careers of local artists and makers. We have recently started selling work by two emerging local makers who have both recently launched their businesses.



Visit our shop for a range of locally made cards, books, prints, ceramics, glassware, homeware, bags, t-shirts, accessories and craft kits.

HORSEBRIDGE FRIENDS receive a 10% discount in the shop, find out more on page 47.

MEET THE MAKER

Sophie Stokes is the brand created by artist, designer and recent graduate Molly Lambourn. Molly prints her hand-drawn and painted designs onto 100% recycled plastic jewellery (which could be recycled again if wanted to!) We love her Frida Khalo inspired designs and now have her necklaces, earrings and bracelets in stock.



Herne Bay based designer Sophie Francis launched **Bini and Blossom** this Autumn. She works with lino printing and embroidery to create a range of bold and bright cushions and purses featuring her own designs inspired by her love of colour, pattern and textiles. Her current collection features birds, skulls and ivy with neon accents.

Shopping at Horsebridge supports local makers and more art for all.

HORSEBRIDGE TALKS

MARCH

Man Up

Thursday 12 March arrive 7pm for 7.30pm

What does the phrase 'man up' even mean? What does being a man entail? And how do you get a six pack?* Paul Elliott looks into what makes a man a man and then wonders if men are truly happy fitting into the confines of those rigid parameters.

** This topic may not be answered during the course of the talk*

FREE

Art Decades: When I Paint My Masterpiece

Thursday 19 March 7 - 8pm

The parallel 'careers' of some illustrious names in rock is this month's Art Decades theme. Occasionally, there are artists such as Bob Dylan, Captain Beefheart and Julian Cope who have come through the music business and gone out the other side, creating new outlets for their creativity and imagination. This talk presents some of the highlights of these radical departures from the rock and roll circuit.

Tickets: £7

PUDDING PAN ROCK

22ND FEBRUARY ~ 9TH MARCH
GALLERY 1 AND 2 AT THE HORSEBRIDGE

The Young History Makers combine heritage and contemporary arts in an exciting new exhibition as they unravel the mystery of how hundreds of little red roman pots ended up on the Whitstable and Herne Bay sea bed.



HISTORY RECORDING EVENING

30TH OF JANUARY 5PM-7PM

Do you have any Pudding Pans in your family?
Interesting archaeological finds or unusual beach finds?
The Young History Makers want to know about them!

Bring them along to the Horsebridge Arts Centre to have them identified by archaeologists and recorded by the Young History Makers.

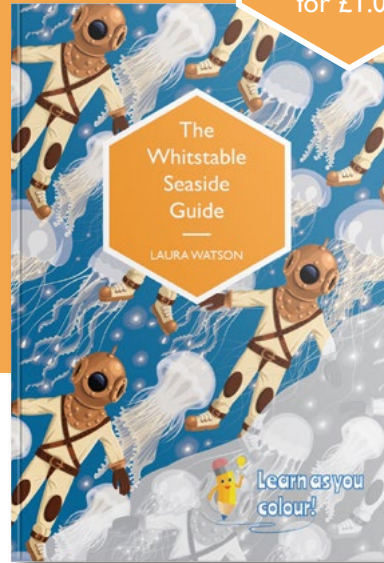


CANTERBURY
ARCHAEOLOGICAL
TRUST LTD



Commissioned by
**THE HORSEBRIDGE
ARTS CENTRE**

Available
exclusively in the
HORSEBRIDGE SHOP
for £1.00



Supported by

 **The Cleary Foundation**



CLUBS GROUPS

Get involved in the clubs and groups that meet at **THE HORSEBRIDGE**

BEAD 'N' BANTER BEADING CLUB

One Wednesday a month
5 Feb, 4 Mar 10am - 12.30pm

Bring along your beadwork and enjoy chatting and making new friends and exchange ideas and tips on this absorbing hobby.

We have a monthly raffle, quarterly challenges, discussions on the latest magazines and books, and much much more.

£5





MARGO SELBY
 Bradstowe House | 35 Middle Wall
 Whitstable, Kent CT5 1BJ
 01227282758

Woven Textiles & Original Artworks
 —
 Visitors Welcome
 Weaving Studio & Shop
 Monday - Friday (excl. Bank Holidays)
 10am-4pm
 —
 For our online store, events and weaving
 workshops visit:
 margoselby.com

PURE
 indulgence by the sea

£10

Off 60 min Elemis Facial or Massage
 Discount! Quote HB20
 Expires 31 March 2020

Beauty
 Complementary Therapies
 Aesthetics
 Menopause Meet Ups!

110 High Street, Whitstable, Kent CT5 1AZ
 01227 772176 07726494278 www.purebythesea.co.uk



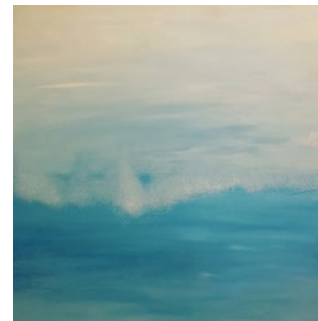
GALLERY EXHIBITIONS

Our galleries offer a diverse and dynamic exhibition programme throughout the year. They serve as a platform to showcase work from a wide range of artists as well as art, heritage and community projects curated by The Horsebridge.

The galleries are free to visit and are open to public every day apart from the first and last day of the exhibition dates which are dedicated installation and de-installation days.

In 2020 we are hosting a special curated programme of exhibitions supported by a grant from the David Family Foundation. This funding has enabled us to increase the number of participants we involve in contemporary and experimental art practices and build partnerships with artists and creative organisations to offer a more diverse artistic programme to our local community.

6 - 8 January



7 minutes to An Ocean of Calm
 (an immersive experience)
 Victoria Jane Leith

19 to 21 December & 6 to 8 January

Victoria Jane Leith invites you to an immersive music and art-based experience, '7 Minutes to an Ocean of Calm'. In the centre of Gallery 1, Victoria will play an original 7-minute piano composition, 'Boundless', whilst inviting you to sit in front of one of a series of her large blue sea and skyscapes. The event will culminate in an acoustic tranquillity concert on Tuesday 7th January at 6pm. A calmer world awaits...

Full details of live performances available on our website.

Supported by the David Family Foundation

11 January - 2 February



LINO PRINT
A LARGE GROUP SHOW
 An exhibition of relief prints

In 2019, The Horsebridge began working collaboratively with Whitstable artist Ben Dickson to bring together a group of artists who use relief printing as a fine art medium.

Zoe Cloke, Laura Boswell, Ieuan Edwards, Hannah Firmin, Andy Fisher, Peter Gander, Eric Gaskell, Kate Guy, Tina Hagger, Andy Johnson, Nick Morley, Jo Oakley, Emily Smith Polybank, Mat Pringle, Ben Sands and Total Pap join Ben in LINO PRINT, a selling exhibition of framed and editioned lino and woodcut prints.

Details of special Lino print workshops on page 29 and on our website thehorsebridge.org.uk/galleries

this is what I want to show you 2020 call for entries #LMSY2020

This is your opportunity to take part in our popular community photographic exhibition.
Using the Instagram app on your phone, take a photo of something YOU WOULD LIKE TO SHOW US.

Tag @thehorsebridge and use hashtag #LMSY2020 in your post and your photo will be exhibited in Horsebridge Gallery 2 this March.

For more information visit
thehorsebridge/lmsy2020

THEHORSEBRIDGE
ARTSCENTRE

GALLERY EXHIBITIONS

11 January - 26 January



A FRESH START

The Whitstable School A level Fine Art, Photography and Textiles

6th form students at the Whitstable School and The Horsebridge Arts Centre have co-curated A FRESH START as part of their A level, Fine Art, Photography and Textiles courses.

This mixed media collection showcases Year 12 and 13 work created during the course, in a professional gallery environment, allowing the students to demonstrate their comprehensive knowledge of the fundamentals of Art and Design.

Supported by the David Family Foundation

29 January - 4 February



SLOW STITCH The practice of mindful and contemplative textile art

Slow Stitch Group

SLOW STITCH is a collaborative show reflecting the personal creative journeys of a number of local participants of the SLOW stitch course, taught over the last 3 years at the Horsebridge Arts Centre by artist and teacher Yvonne Fuchs.

Mindful and complete stitching is a way to engage with textile art in a creative and reflective way. A collection of individual approaches to this practice has been curated by Yvonne in this exhibition of textile work. To find out more about this years course see page 29.

5 - 11 February



Capture the Moment

Debra Ivens

Debra Ivens is a British artist who draws inspiration from the seascapes and landscapes of Southern England.

Her paintings are in turn abstract and realist, yet always engaging and whimsical.

Her love for wild Britain seeps into each piece.

Hut 23 Harbour Art Gallery

31 December - 7 January 2020

Made in Whitstable
Group Show

7 - 14 January
Closed for Renovations

21 - 28 January
Daphne Candler
Acrylic Paintings and Prints

28 January - 4 February
Janet Dance and Marion Shepherd
Acrylic Paintings and Jewellery

4 - 11 February
Daphne Candler
Acrylic Paintings and Prints

11 - 18 February
Bethany Rogers
Ceramics

18 February - 3 March
Irene Southon
Studio Art Glass



Photo by Sue Carfrae

Open Friday - Sunday and Bank Holidays

Weekdays 11am - 4pm Weekends 10am - 5pm

Contact madeinwhitstable@gmail.com for further information



Made In Whitstable 'Connections' exhibition
8-21 April 2020 Gallery 1
at The Horsebridge Arts Centre



GALLERY EXHIBITIONS

5 - 11 February



WORK

Stephanie Brunton and Colin Whitaker

The theme of WORK is explored in different ways by the two artists through a series of paintings and prints.

Stephanie captures performers and musicians at work, whilst Colin investigates places where work is carried out, either now or in the past.

12 - 18 February



Estelle Jourd

Spring Show

Reflecting a lifetime spent in Whitstable by the coast, Estelle's work mainly focuses on the sea and sky.

The atmosphere created by the weather conditions throughout the year feature in this solo show of seascapes in oil on canvas.

12 - 18 February



Beyond the Mundane

Natasha Pearl

Beyond the Mundane encompasses Natasha's work from the previous two decades and includes new unseen pieces.

This exhibition looks at the theme of there being something else that exists beyond ourselves, that is both magical and mysterious.

GALLERY EXHIBITIONS

22 February - 9 March



Pudding Pan Rock
Young History Makers

The Young History Makers combine heritage and contemporary arts in an exciting new exhibition as they unravel the mystery of how hundreds of little red roman pots ended up on the Whitstable and Herne Bay sea bed.

The Young History Makers are a group of young people aged 12-23 with an interest in heritage, the creative arts or both. They have been working alongside archaeologists, heritage professionals and artists since August 2019 to rediscover the history of the pudding pans and interpret them for a new generation. The group have also gained employable skills in the arts and heritage taking part in work placements, training days, workshops, trips and completing Arts Awards.

The Young History Makers project is funded by The National Lottery Heritage Fund and was delivered through a partnership between The Horsebridge Centre, Canterbury Archaeological Trust and Whitstable Community Museum Group. For more information about the project please email nicola@thehorsebridge.org.uk

11 - 24 March



At Memory's Edge
Fishslab Collective

Memory is an individual's perception of a real event; remembering, lost, forgotten, buried, sweet, bitter, sad or happy, but often imperfect images.

Artists will explore and respond to this theme.

11 - 24 March

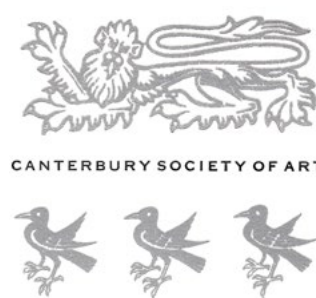


Shoreline
Irene Southon Lindsay Wilkinson
and Sue Moreton

Through their work, the artists explore the colours and textures of the East Kent Shoreline and in particular their local area of Whitstable.

In this collaborative show the artists have created pieces using felt, ceramics and fused glass and examples of these materials in various stages of production will also be on display.

25 March - 7 April

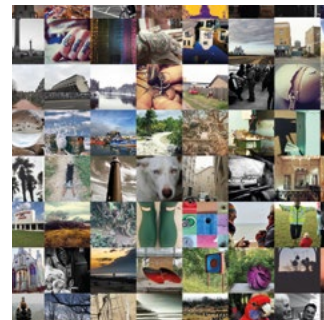


Views by a thousand eyes
Canterbury Society of Art

Views by a thousand eyes focuses on the conceptual eye of the inner mind and how it evolves into an individual art form, allowing audiences to reflect on their own visual experiences.

Members of the Canterbury Society of Art seek to explore this theme through a variety of art forms, including three dimensional work, watercolour, acrylic, oil and pencil.

25 March - 7 April



This is what I want to show you
Community instagram exhibition

After 2 successful years, our Instagram inspired community photographic exhibition returns for the third time. Over the past 3 months, participants have shared insights into their professional and personal worlds via Instagram with the hashtag #LMSY2020 and tagging @thehorsebridge.

These photos, printed by the Horsebridge Arts Centre, have been curated into a collection of moments, snapshots and experiences; This is what they want to show you.

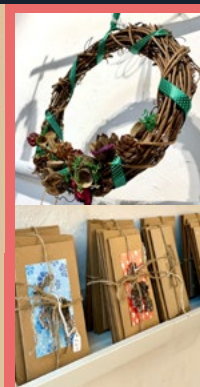
Each printed entry will be for sale for £5 to raise funds for the Arts Centre.

Supported by the David Family Foundation

YOUNG
DIGITAL
MAKERS



AUTUMN HIGHLIGHTS



HORSEBRIDGE ART AUCTION

We would like to say a **huge thank you** to the artists who kindly donated work and the public who visited the exhibition and bid enthusiastically and generously for the fantastic artwork available at auction.

We raised an incredible **£4,358!**

£4,140 will go to the centre to support our projects and £218 has been donated to the Pilgrims Hospice in memory of Ray our dearly missed caretaker.

Whilst we work very hard to earn the income to run the centre, we do need to raise around £2,000 a month to keep the doors open 7 days a week, so this money is incredibly important.

For those who missed out on winning art we've kept the artworks and artist information on our website: thehorsebridge.org.uk/artauction

Look out for the Horsebridge Art Auction 2020 in the Autumn

ADULT CLASSES AND WORKSHOPS

There are many activities regularly taking place in the centre. Unless indicated these are not run by the Horsebridge so please use the contact information to contact the class tutors directly for any queries or to book.

Some classes only run during term time or have specific start dates, so please make sure you check before turning up.

You can find more information about all of the classes at thehorsebridge.org.uk/classes or by contacting the tutors.

- art
- craft
- dance & fitness
- languages
- mind & body
- theatre
- well-being
- writing

MONDAY

■ Spanish Intermediate Conversation

with Kent Adult Education
10am-12pm
www.kentadulthoodeducation.co.uk

■ Tai-Chi
with Christine Hopper
afternoons
christinehopper@talktalk.net

■ Yoga Basics
with Bernadette Fisher
5.45-6.45pm
www.bernadettefisheryoga.co.uk

■ Kent Coast Theatre (KCT)
with Lou Fowkes
7-9pm
info@kentcoasttheatre.co.uk

■ Pure Pilates
with Sharon Saker
call for details
07970 258527

TUESDAY

■ Hatha Yoga
with Linda Thompson
10-11.30am
yogajoyful@gmail.com

■ Introduction to Sahaja Yoga Techniques
with Sahaja Yoga
10-11am
01227 459247

■ Italian Intermediate
with Kent Adult Education
1-3pm
www.kentadulthoodeducation.co.uk

■ Vinyasa Yoga
with Monica Marini
1-2.15pm
momoiah@yahoo.com

■ Yoga
with Emma Epton
6.30-7.30pm
whitstablecommunityyoga@gmail.com

WEDNESDAY

■ Callanetics Exercise Method
with Jennifer Watson
10-11am
www.callanetics-canterbury.co.uk

■ Dance Exercise
with Jennifer Watson
11.15am-12.15pm
watsonjennifer16@gmail.com

■ Heart Centred Yoga UK
Beginner yoga
1-2.15pm
heartcentredyogauk@gmail.com

■ Pilates
with Stephanie Fancy
6.30-7.30pm Intermediate
7.30-8.30pm Beginners
www.facebook.com/fancypilates

ADULT CLASSES AND WORKSHOPS

THURSDAY

■ French for Fun
with Vicki Sullivan
starting soon Beginners level 1
www.languageforfun.org

■ Hatha Yoga
with Linda Thompson
10-11.30am
yogajoyful@gmail.com

■ French Intermediate Parlons Français
with Kent Adult Education
11.30am-12.30pm
www.kentadulthoodeducation.co.uk

■ Tai-Chi
with Christine Hopper
12.30-1.30pm
christinehopper@talktalk.net

■ French Advanced
with Kent Adult Education
1-3pm
www.kentadulthoodeducation.co.uk

■ Flamenco Dance
with Charlotte Baynes
5.15pm-6.15pm Mixed level
charlottebaynes.com

■ Body Control Pilates
with Alison Cobley
5.45-6.45pm Beginners
7-8pm Mixed ability
www.pilateswithalison.net

■ Exploring What Matters: Action for happiness course
with Vinita Joseph
6.45-8.45pm
vinita@vinitajoseph.com

FRIDAY

■ French for Fun
with Vicki Sullivan
9-10.30am Beginners level 3
10.40-12.10 Improvers level 1
www.languageforfun.org

■ Ballet & Contemporary Dance
with Rosita Yarboi
10-11am
www.reachperformance.co.uk

■ Adult Tap Dance
with Rosita Yarboi
11am-12pm
www.reachperformance.co.uk

SATURDAY

■ Yin Yoga
with Emma Epton
9.15-10.15am
whitstablecommunityyoga@gmail.com

■ Diva Bollywood Dance Class
with Jasmin deSilva-Smith
10.30-11.30am
jasmin@my-energise.co.uk

■ Two day Colour Workshop
with Janet Maxwell
10.30am-4pm Saturday & Sunday
janetmaxwell@gmail.com

■ Flow Your Mind
with Cass Xuxin Yoga
11.45am-12.45pm
www.YogaWithCass.co.uk

■ Contemporary Textile Skills: Hand Stitching
with Ann Small
9.30am-12.30pm
ann@asmalldesign.co.uk

■ Contemporary Textile Skills: Freehand Machine
with Ann Small
1.30pm-4.30pm
ann@asmalldesign.co.uk

SUNDAY

■ Two day Colour Workshop
with Janet Maxwell
10.30am-4pm Saturday & Sunday
janetmaxwell@gmail.com

■ Life Drawing
with Ron Freeman
11-1pm alternate Sundays
rgcfreeman@aol.com

■ Slow Stitch
Yvonne Fuchs
2-4pm second Sunday of the month
fuchsy141@hotmail.com

■ A Writing Course with a Difference
with Linda M James
contact for dates
www.lindamjames.co.uk

COME AND EXPLORE THE WIDE RANGE OF EVENTS THE UNIVERSITY OF KENT HAS TO OFFER!



www.kent.ac.uk/events

University of
Kent

ADULT **CLASSES AND WORKSHOPS**

■ Art

THEHORSEBRIDGE Photography Course with The Whitstable Photographic Co. **6-8pm Wednesday**

A creative and practical 6 week photography course. You'll learn all the essentials of photography, including how to get your camera off auto mode. See page 33 for more information.

CONTACT: 01227 281174 thehorsebridge.org.uk/photocourse

LINO PRINT: Linocut introduction workshop with Ben Dickson **6.30-8.30pm 16 Jan Thursday**
2.30-4.30pm 25 Jan Saturday

Two print workshops taking place during LINO PRINT: A LARGE GROUP SHOW exhibition to introduce linocut technique, using a tabletop mangle press.

CONTACT: 01227 281174 thehorsebridge.org.uk/linoprint

Two Day Colour Workshop for Artists & Designers with Janet Maxwell **10.30am-4pm Weekend**

11/12 January and 8/9 February. Identifying strategies for a wider range and more control of colour combinations, through experimentation and discovery. Based on the teaching of Johannes Itten and Josef Albers at the Bauhaus. The workshops take place in a lovely bright studio with sea views.

CONTACT: Janetmaxwell@gmail.com

Life Drawing with Ron Freeman **11am-1pm Sunday**

Alternate Sundays starting from 12 January. If you would like to join these informal sessions, please speak to Ron.

CONTACT: 07749 835036 rgcfreeman@aol.com

■ Craft

Contemporary Textile Skills: Hand Stitching with Ann Small **9.30am-12.30pm Saturday**

Starts 22 February. New classes offering various textile skills. Each class is half a day. They are only one a month, giving you plenty of time to practice before the next class. Places will be limited to 10, so don't wait too long!

CONTACT: ann@asmalldesign.co.uk asmalldesign.weebly.com

Contemporary Textile Skills: Freehand Machine with Ann Small **1.30-4.30pm Saturday**

Starts 22 February. New classes offering various textile skills. Each class is half a day. They are only one a month, giving you plenty of time to practice before the next class. Places will be limited to 10, so don't wait too long!

CONTACT: ann@asmalldesign.co.uk asmalldesign.weebly.com

FAR Skate Foundation

Supporting young people and the community



Skateboard Shop

- Gift vouchers available
- Mini ramp on site
- Experienced skaters
- Advice and guidance
- All major brands
- over 250 boards in stock

Learn to Sk8!
FAR Skate Club
Saturday 10-11am
First lesson free!



farskateshop.co.uk
Unit 77 John Wilson Business Park,
Whitstable, Kent, CT5 3QT 01227 779181

CHARITY COMMISSION
FOR ENGLAND AND WALES

KEiBA
★ WINNER ★

EVOLUTION HEALTH

- Chiropractic
- Audiology
- Bowen Technique
- Chiroprody / Podiatry
- Counselling Psychology
- Homeopathy
- Humanistic Counselling
- Hypnotherapy
- Therapeutic & Sport Massage



62 Borstal Hill
Whitstable
CT5 4NA
TEL: 01227 273821

Integrative Body Psychotherapy



Energy Work
Breath Work

ruthhoskinsukcp@gmail.com
www.body-psychotherapy.org.uk
www.counselling-directory.org.uk
Ruth Hoskins MA UKCP 07742 295506

ADULT CLASSES AND WORKSHOPS

Slow Stitch with Yvonne Fuchs

2-4pm Sunday

Mindful and contemplative textile art. New course starts monthly on Sunday March 8th. Booking essential. Beginners and more experienced ALL very welcome.
CONTACT: 07782 210304 fuchsy141@hotmail.com

■ **Dance and Fitness**

Dance Exercise with Jennifer Watson

11.15am-12.15pm Wednesday

Get your funk on...and keep fit! All ages, all fitness levels. Low impact. Fun exercise to music from the 70s and 80s. Safely taught by a Qualified Exercise to Music and Callanetics Instructor. No need to book or register.

CONTACT: 07966 731323 watsonjennifer16@gmail.com

Flamenco Dance with Charlotte Baynes

5.15-6.15pm Thursday

Mixed Level. Enjoy an exciting array of Flamenco styles such as Alegrias, Bulerias, Guajiras + more. Charlotte is a highly experienced and inspired teacher within the arts. Ideally, wear shoes with a firm heel.

CONTACT: 07906 685109 charlottecadiz@yahoo.co.uk charlottebaynes.com

Ballet & Contemporary Dance with Rosita Yarboy

10-11am Friday

For adults, run by Reach Performing Arts.

CONTACT: 01227 369891 reachacademy@sky.com www.reachperformance.co.uk

Adult Tap Dance with Rosita Yarboy

11am-12pm Friday

Run by Reach Performing Arts.

CONTACT: 01227 369891 reachacademy@sky.com www.reachperformance.co.uk

Diva Bollywood Dance Class with Jasmin deSylva-Smith

10.30-11.30am Saturday

An hour to let your inner Diva out! A sneaky work out for your mind and body, it's fun to follow, simple routines. Everyone welcome.

CONTACT: 07761 199179 jasmin@my-energise.co.uk

■ **Languages**

Spanish Intermediate Conversation with Kent Adult Education

10am-12pm Monday

CONTACT: 03000 412222 www.kentadulteducation.co.uk



THE HORSEBRIDGE Photography Course

with
THE WHITSTABLE PHOTOGRAPHIC Co.

26TH FEBRUARY TO 1ST APRIL
WEDNESDAYS 6 - 8PM

The Horsebridge Arts Centre have partnered with The Whitstable Photographic Co to bring you a **creative and practical 6 week photography course** in which you'll learn all the essentials of photography.

By the end you'll have experienced a range of techniques, creative ideas and approaches and created a varied **portfolio of your own work** ready for printing and display.

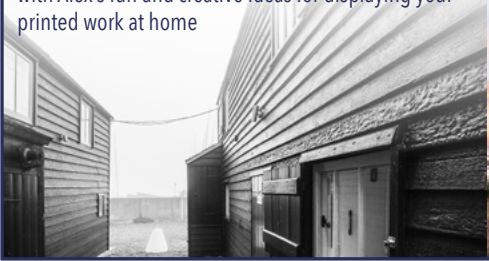
Professional **photographer Alex Hare** who will guide you through your weekly learning schedule in this fun, creative and stimulating course. Each week Alex will talk about a new aspect of photography before the group heads out into the town to create their own images based on the ideas suggested.

Course cost: £120
Gift Vouchers available.

Visit thehorsebridge.org.uk/photocourse for booking and further information.

WHAT YOU'LL LEARN

- All the basics of how to operate your camera including how to get off auto mode.
- Composition techniques that will help you shoot a variety of scenes.
- An overview of how to do a digital workflow & organisation of your photos.
- How to post-process your photos and what software to use.
- Different genres of photography and practice at shooting them.
- How to create your own printed display of your work with Alex's fun and creative ideas for displaying your printed work at home



ADULT CLASSES AND WORKSHOPS

Italian Intermediate with Kent Adult Education 1-3pm Tuesday
CONTACT: 03000 412222 www.kentadulteducation.co.uk

French Intermediate Parlons Français with Kent Adult Education 11.30am-12.30pm Thursday
CONTACT: 03000 412222 www.kentadulteducation.co.uk

French Advanced with Kent Adult Education 1-3pm Thursday
CONTACT: 03000 412222 www.kentadulteducation.co.uk

French for Fun with Vicki Sullivan starting soon
9-10.30am Beginners level 3
10.40am-12.10pm Improvers level 1 Thursday Friday Friday

Fun, sociable French classes, focussed on conversation skills following a structured course.
CONTACT: 07889495577 vicki@languageforfun.uk languageforfun.org

■ Mind & Body

Tai-Chi with Christine Hopper afternoon 12.30-1.30pm Monday Thursday

T'ai Chi Ch'uan style is the traditional Yang form. When practiced regularly T.C.C brings noticeable improvement at physical, energetic, and emotional levels. The health benefits of a serious practice are rapidly felt in daily life. Booking essential.
CONTACT: christinehopper@talktalk.net

Yoga Basics with Bernadette Fisher 5.45-6.45pm Monday
Classical Hatha Yoga for those new to yoga, returning, or seeking a slower class.
CONTACT: 07739 302870 bernadetteanne@aol.com www.bernadettefisheryoga.co.uk

Pure Pilates with Sharon Saker evening Monday
Pure Pilates with Sharon Saker on Monday evening. Tone, sculpt, stretch and breathe ... All levels welcome. Just bring a mat and Wear comfortable clothing.
CONTACT: 07970 258527

Introduction to Sahaja Yoga Techniques with Sahaja Yoga 10-11am Tuesday
Weekly drop-in introductory sessions to Sahaja yoga techniques. Experience inner peace and silence with this calming soothing meditation, through the awakening of our gentle motherly energy, the Kundalini. Everyone is welcome, free of charge, donations only.
CONTACT: 01227 459247 07984 639394 www.sahajayoga.org

MERIDIAN

Meridian are inline with all your Mortgage Needs

We recommend from the whole of the market and offer a FREE no obligation initial consultation



- Mortgages
- Remortgages
- Buy to Let Mortgages
- Bridging Loans / Fast Finance
- Secured Loans
- Home Insurance
- Life Assurance
- Critical Illness
- Income Protection

Meridian Consultants

50 - 52 Oxford Street, Whitstable, Kent CT5 1DG

Call us today on **01227 26 66 88**

info@meridian-mortgages.co.uk

YOUR HOME MAY BE REPOSSESSED IF YOU DO NOT KEEP UP REPAYMENTS ON YOUR MORTGAGE.

Meridian is a trading style of Rosemount Financial Solutions Ltd who are an appointed representative of Intrinsic Financial Planning Limited (Registered in England 5372217) and Intrinsic Mortgage Planning Limited, which are authorised and regulated by the Financial Conduct Authority. Intrinsic Financial Planning Ltd and Intrinsic Mortgage Planning Limited are entered on the FCA register under reference 440703 and 440718.

ADULT CLASSES AND WORKSHOPS

Hatha Yoga with Linda Thomson

10-11.30am Tuesday
10-11.30am Thursday

A space during the busy and often stressful week for you to stretch in classical yoga postures. For all levels, beginners welcome.

CONTACT: 07516 494300 yogajoyful@gmail.com

Vinyasa Yoga with Monica Marini

1-2.15pm Tuesday

A dynamic and energising practice open to those with a more developed Yoga practice and/or a good level of stamina. These classes are defined by principles of Vinyasa Krama (intelligent sequencing) and include exploration of alignment, arm balances and the practice of inversions.

CONTACT: 01227 273147 07913 887108 momoiah@yahoo.com

Yoga with Emma Epton

6.30-7.30pm Mixed Level Tuesday

Yoga Alliance UK registered teacher. Emma is also pregnancy yoga trained.

CONTACT: 07891 454450 whitstablecommunityyoga@gmail.com

Callanetics® Exercise Method with Jennifer Watson

10-11am Wednesday

Lose at least one dress size in 10 hours! Safely strengthen your whole body, especially core and pelvic floor, and dramatically improve your posture and flexibility. Known as Meditation in Motion.

CONTACT: 07966 731323 watsonjennifer16@gmail.com www.callanetics-canterbury.co.uk

Heart Centred Yoga UK

1-2.15pm Wednesday

Beginner Yoga. Yoga Poses, meditation and breathing practice followed by a blissful relaxation.

CONTACT: 07955 850215 heartcentredyogauk@gmail.com

Pilates with Stephanie Fancy

6.30-7.30pm Intermediate Wednesday
7.30-8.30pm Beginners Wednesday

Both classes for men and women. Strengthen your body, mind and spirit.

CONTACT: 07890 897851 stephaniefancy@gmail.com www.facebook.com/fancypilates Instagram: [fancypilates](https://www.instagram.com/fancypilates)

Body Control Pilates with Alison Cobley

5.45-6.45pm Beginners Thursday
7-8pm Mixed Ability Thursday

Practice pilates regularly and your body will become stronger, toned and more flexible. Suitable for people of all ages and levels of fitness. Small class sizes - maximum 12 participants.

CONTACT: 07903 010816 alisonpilates@aol.com www.pilateswithalison.net

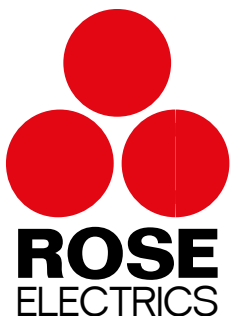
THE
LINDLEY PLAYERS

FLARE PATH

BY **TERENCE RATTIGAN**

**WEDS 25TH - SAT 28TH
MARCH 2020**

WEBSITE www.playhousewhitstable.co.uk
TELEPHONE 01227 272042
BOX OFFICE Monday to Saturday, 10am - 12 noon
RESTRICTED WHEELCHAIR ACCESS | LICENSED BAR | HEARING LOOP



reliable
female
domestic
electrician

07395 492361

rose@roseelectrics.co.uk
www.roseelectrics.co.uk

samson & coles
& ltd

Modern British Jewellery Gallery



Bespoke Design

Commissions

Repairs

13 Oxford St, Whitstable, CT5 1DB 01227 277985
Opening hours: Tues - Sat 10.30am - 5.00pm

ADULT CLASSES AND WORKSHOPS

Yin Yoga with Emma Epton

9.15-10.15am Saturday

Yin Yoga targets the deep connective tissues of the body. Connecting to the meridian lines in the body and encompasses Daoist principals and traditional yoga.

CONTACT: 07891 454450 whitstablecommunityyoga@gmail.com

Flow Your Mind with Cass Xuxin Yoga

11.45am-12.45pm Saturday

A class combining movement and breathing, for any and every body. Based in Kent, Cass (E-RYT® 200) loves to explore the fascinating power of yoga, and the meditative relaxation practice – YogaNidra.

CONTACT: 07780543848 Namaste@YogaWithCass.co.uk Facebook@CassXuxinYoga

■ Theatre

Kent Coast Theatre (KCT) with Lou Fowkes

7-9pm Monday

Engaging community & inspiring potential, KCT is a community theatre company based at the Horsebridge. Productions and acting workshops throughout the year for adults 16+.

CONTACT: 01227 280314 info@kentcoasttheatre.co.uk www.kentcoasttheatre.co.uk

■ Well-being

Exploring What Matters: Action for happiness course with Vinita Joseph **6.45-8.45pm Thursday**

Starts 9 January. An 8 week course to explore what really matters for a happy and meaningful life. Feel good. Do good. To find out more email or book online.

CONTACT: vinita@vinitajoseph.com www.actionforhappiness.org/join

■ Writing

A Writing Course with a Difference with Linda M James

contact for dates Sunday

Starts 19 January. If you'd like to join a writing course that not only shows you how to improve your short story or novel writing skills to publication level, but also shows you where and how to market your work, then this is the course for you.

CONTACT: 01227 634107 lindamjames@gmail.com www.lindamjames.co.uk

THE HORSEBRIDGE ARTS CENTRE

Young MAKERS club

every
Thursday
during term-time
4 to 5pm

For ages 6+

£3 per child or £5 for two.

Come and take part in our weekly after school club, crafting and making a variety of creative small projects. Booking with reception is advised.

9 January Fruit and Veg Stamping

16 January Block Printing and stamping Birthday Cards

23 January Portrait Drawing

30 January Solar System Mobiles

6 February Paper and Fabric Mosaics

13 February Optical Illusion Heart Cards

27 February Young History Makers: Make Roman Pottery

5 March Young History Makers: Roman Boat Sculpture

12 March Magazine Clip Doodle Drawings

19 March Bookmark Making

26 March Environment Banners

CHILDREN'S CLASSES AND WORKSHOPS

There are a range of activities regularly taking place in the centre for children. Unless indicated these are not run by The Horsebridge so please use the contact information to contact the class tutors directly for any queries or to book.

Some classes only run during term time or have specific start dates, so please make sure you check before turning up.

You can find more information about all of the classes at thehorsebridge.org.uk/kids or by contacting the tutors.

- art
- drama
- languages
- music

MONDAY

■ **Hey Diddle Music**
with Anita Memmott
9.20-10.05am 18months+ & 10.15-11am 0-18 months
nitamemmott@gmail.com

TUESDAY

■ **Musical Bumps Mixed Age**
with Kirsty Ottaway
10-10.45am 0 - 4 years
www.musicalbumps.com

WEDNESDAY

■ **La Jolie Ronde French for Children**
with Vicki Sullivan
3.45-4.30 age 8-10
4.30-5.15pm age 5-7
lajolieronde.co.uk

■ **Playtime Theatre**
with Sara Kettlewell
4-5pm 7-11yrs & 5-6.15pm 11-18 yrs
www.playtimetheatre.co.uk

THURSDAY

■ **La Jolie Ronde French for Children**
with Vicki Sullivan
3.45-4.30pm Year R and year 1
lajolieronde.co.uk

■ **Young Makers Club**
HORSEBRIDGEARTS
4-5pm 6yrs + (term time)
thehorsebridge.org.uk/tickets

SATURDAY

■ **La Jolie Ronde French for Children**
with Vicki Sullivan
9.15-9.45am Pre-school French
9.45-10.30am age 10-12
10.30-11.15 age 7-9
11.15am-12pm age 6-7
lajolieronde.co.uk

Following on from the fantastic Whitstable Seaside Guide exhibition, the Seaside Guide is now available exclusively from the **HORSEBRIDGE SHOP**. Packed with illustrations and fascinating facts from along the seashore.

Whitstable Nutrition Centre

A friendly, independent family run health shop trading in Whitstable since 1970

81 High Street, Whitstable, Kent CT5 3DY

01227 278 550

whitnutcentre@gmail.com

@whitstablenuutri

Hey Diddle Music

We sing, we move, we learn, we smile!

Music classes for babies through to pre-schoolers at The Horsebridge Centre on Monday mornings.

Specialist Dalcroze Eurhythmics teacher at Guildhall School of Music and Drama

Contact Anita Memmott
nitamemmott@gmail.com 07710 575 390

Would you like to be a part of our theatre?

The Playhouse Whitstable is run entirely by volunteers, members of The Lindley Players. We have plenty of opportunities to get involved (on stage and off!) and we are always looking for new members!

We are open every Saturday morning 10am-noon for new members to join, get to know more, or have a tour around the theatre. Just turn up!

LINDLEY PLAYERS

Playhouse Whitstable, 104 High Street, Whitstable, CT5 1AZ
01227 272042 www.playhousewhitstable.co.uk

CHILDRENS CLASSES AND WORKSHOPS

Art

Young Makers Club

4-5pm ages 6+ (term time) **Thursday**

HORSEBRIDGEARTS Come and take part in our weekly after school club and learn how to make and craft a variety of small projects. Please see page 40 for dates and full listing of activities.

CONTACT: 01227 281174 thehorsebridge.org.uk/tickets

Drama

Playtime Theatre with Sara Kettlewell

4-5pm 7-11 years **Wednesday**

5-6.15pm 11-18 years **Wednesday**

Fun drama workshops run by one of the South East's leading children's theatres. Term-time only.

CONTACT: 01227 266272 07758 729129 playtime@dircon.co.uk www.playtimetheatre.co.uk

Languages

La Jolie Ronde French for Children with Vicki Sullivan

3.45-4.30pm age 8-10 **Wednesday**

4.30-5.15pm age 5-7 **Wednesday**

3.45-4.30pm Year R and year 1 **Thursday**

9.15-9.45am Pre-school French **Saturday**

9.45-10.30am age 10-12 **Saturday**

10.30-11.15am age 7-9 **Saturday**

11.15am-12.00pm age 6-7 **Saturday**

The fun way to learn French with action songs, rhymes, role-play and stories. FREE trial session for all new families. Get in touch to find the right class for your child. Term time only.

Booking required for all classes except Pre-school.

CONTACT: 01227 779126 07889 495577 lajolierondevicki@gmail.com www.lajolieronde.co.uk

Music

Hey Diddle Music with Anita Memmott

9.20-10.05am 18mths+, booking required

10.15-11am 0-18 mths, drop in class

Monday

Monday

CONTACT: 07710 575390 nitamemmott@gmail.com

Musical Bumps Mixed Age with Kirsty Ottaway

10-10.45am 0 - 4 years

Tuesday

High quality music classes for babies to pre-school children.

CONTACT: 0845 0943786 07934 921072 canterbury.faversham@musicalbumps.com www.musicalbumps.com

Please book direct with class tutors. More information on thehorsebridge.org.uk/kids

JANUARY MARCH 2020 41

HARBOUR Market WHITSTABLE

An open-air showcase of locally-created, British made, premium and hand-crafted goods and fine art. Micro eateries serve a mouth watering variety of food. Set in the working harbour of Whitstable.

Open every weekend (weather permitting) and 5 days a week during the summer.
Pop-up Huts available to rent.

www.harbourmarketwhitstable.co.uk



GRAB A TEAM OF UP
TO 6 AND PREPARE
TO BATTLE

QUIZ & CURRY FUNDRAISING EVENING @ THE HORSEBRIDGE

FILM CLIP
ROUND



MUSIC ROUND



REVIVAL



CURRY & SIDES

GREAT

RAFFLE

PRIZES

BAR BY REVIVAL

BEER & WINE



REVIVAL



THE HORSEBRIDGE
ARTS CENTRE

THE ALTERNATIVE VALENTINES QUIZ
15TH FEBRUARY
7PM FOR 7:30PM START

£10 PER PERSON. BOOKING ESSENTIAL
FULL PAYMENT ON BOOKING

Raffle and additional games and fundraising on the night

To Book: (01227) 281255 or message the Revival Facebook page

ALL PROCEEDS WILL GO TO EAST KENT MIND & THE HORSEBRIDGE ARTS CENTRE



WHITSTABLE REPAIR CAFÉ

REPAIR THINGS. SHARE KNOWLEDGE. GROW TOGETHER.

FOR INFORMATION AND UPDATES FOLLOW US ON FACEBOOK @repaircafewhitstable

ROOM HIRE AT HORSEBRIDGE

Rooms over three floors, serviced by a lift and offering accessible space for disabled people. A staffed reception to welcome and assist visitors along with a cafe providing refreshment throughout the day.

Room name	The Hub	W3	W5	W6	Performance Space	
					<i>Mon-Fri</i>	<i>Sat & Sun</i>
Hourly rate	£16	£12.50	£12.50	£12.50	£18	£26
Day rate	£90	£60	£60	£60	-	-
Room dimensions (m)	6.3 x 7.9	3.5 x 6	3.5 x 6	3.2 x 5 x 4.3	9.5 x 12	
Floor area (m ²)	49	21	21	17.5	114	
Theatre seating capacity	40	16	16	15	150	
Boardroom seating capacity	24	8	8	12	50	
Standing capacity	45	20	20	20	240	

W3 and W5 offer sea views. The Hub and Performance Space are equipped with air conditioning.

Quarter page
62mmx62mm

Full page
130mmx130mm

Half page
130mmx62mm

advertise here

Book for one year and only pay for nine months.

This programme has a print run of 7,000.

It is distributed to local businesses, libraries, schools and the Friends of the Horsebridge.

An advert in our programme represents excellent value for money and helps us continue to serve the local community.

Contact helen@thehorsebridge.org.uk

CGS Blinds & Shutters

SHUTTERS



VERTICAL



VENETIAN



ROLLER



PERFECT FIT



PLEATED



ROMAN



OFFICE
OR HOME

◆ CONSERVATORY ROOFS ◆

Come and visit our Showroom, and choose from Materials/Fabrics.

Expert advice with 1st Class service.

All blinds are custom made to your needs.

Supply Only Or Surveyed And Installed

146 Tankerton Road, Whitstable, Kent, CT5 2AW

01227 278643

www.cgsblinds.co.uk



BECOME A

FRIEND

OF THE HORSEBRIDGE
ARTSCENTRE

Becoming a
Friend not
only gives
you great
benefits, but
it benefits us
too

With your **support**
and donations we
are able to open
7 days a week

We can provide
accessible
activities and
community
events

You support
us delivering
youth and
teen projects
all year

OUR FRIENDS GET GREAT
BENEFITS
WHICH FRIEND ARE YOU?

FRIENDS receive

- ✦ 10% off in Cafe Revival and the HORSEBRIDGE**SHOP**
 - ✦ Earlybird prices at all HORSEBRIDGE**FILMs**
 - ✦ Special access to shop products, events and exhibitions
 - ✦ Exclusive Friends offers
- all for just **£25** a year

Great**FRIENDS** receive
all the **FRIENDS** benefits plus:

- ✦ 4 free tickets to HORSEBRIDGE**FILMs**
- all for just **£50** a year

Best**FRIENDS** receive
all the **FRIENDS** benefits plus:

- ✦ 10 free tickets to HORSEBRIDGE**FILMs**
- ✦ Recognition of your support on our supporters web page

all for just **£75** a year

**YOU
+US**

JOIN NOW

thehorsebridge.org.uk/friends

CAFE REVIVAL @ THE HORSEBRIDGE

OPEN 7 DAYS a WEEK

FRESHLY



COOKED

EVENTS



& CATERING

SMOOTHIES



JUICE

FULLY



LICENSED



PARTIES

BREAKFAST BRUNCH LUNCH
ALL DAY CAKES BAKES & LIGHT BITES

✧ EAT IN OR TAKEAWAY ✧ PAY-IT-FORWARD ✧ PEER SUPPORT



East Kent

PROFITS GO TOWARDS RAISING MENTAL HEALTH
AWARENESS AND CHALLENGING STIGMA

FREE CUP OF TEA



as a THANK YOU FOR READING THE WINTER 2020 BROCHURE
YOU CAN CLAIM A FREE CUP OF TEA. JUST HAND THIS VOUCHER
IN AT THE CAFE.

MIND



MUSIC
MEDICINE
FOR THE