

music theatre comedy talks exhibitions films workshops family shop

# WHAT'S ON

## July-September 2025



**THE HORSE  
BRIDGE**

A place where everybody can experience creativity.  
Everyone is welcome, everyone can take part.

# WELCOME

What an incredible spring season we had packed with comedy, music, theatre and an amazing variety of creative activities and exhibitions. As our music and comedy calendar takes a break for the summer, we have a host of free summer workshops to keep the family entertained during the summer holidays.

Our Art Den Summer Club is open to all primary age children and we are running workshops alongside Wild about Whitstable and the Whitstable Harbour and Boat Show. Don't miss another cracking theatre performance from Constant Lark at the end of the summer 'Tales of Gods and Heroes'!

Then before we know it our events calendar will be starting again with Jazz, Comedy and a Back To School fundraising Quiz and the autumn term of Studio Session courses will be there to entice you to try working with clay, oils, printmaking, watercolour and much more.

**Liz Daone**  
Executive Director

## CONTENTS

ARTbank	3
Music	4
Events	5
Comedy	5
Create & Do Families	6
FREE Summer workshops	7
Talks	8
Theatre	9
Makers Shop	9
Film	10
Create & Do Adults	
Classes, Clubs, Workshops	11
Room hire	11
Studio Sessions	12
Exhibitions	14
Friends	16
Visit	16



Cover image: From Driftwood Boat workshop on 9 August as part of Whitstable Harbour and Boat Show. Pay What You Can workshop, suggested donation of £5. See page 7.



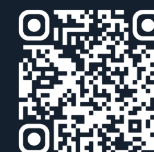
**The Horsebridge ARTbank** is a place where donated and preloved art materials are available for you to take home by paying whatever you are able as part of our **Pay What You Can** scheme.

We know the **positive impact of creativity** on well being which is why it is important to us that **no one is excluded** from being able to access and enjoy art and craft materials.

The ARTbank is located on our ground floor and available to **visit anytime we are open**.

It operates as a **Pay it Forward** scheme, which helps people access free materials with no financial burdens or stigma. Anyone who is able and wants to support this initiative can contribute towards the fund by leaving a **pay it forward donation**.

We are accepting donations of unwanted art and craft materials which can be dropped in at the front desk. Special access sessions - specifically for community organisations, their users and contacts - are held regularly allowing access to the ARTbank outside of opening hours on selected Tuesdays.



Find out more about our amazing ARTbank  
[thehorsebridge.org.uk/artbank](http://thehorsebridge.org.uk/artbank)

# EVENTS

## Jazz at The Horsebridge

**Sundays 5 - 7pm**

Bar opens 4pm

**£17.50 or £15 for Friends**

[thehorsebridge.org.uk/jazz](http://thehorsebridge.org.uk/jazz)



Celebrating the best of live jazz in all its forms, featuring top notch vocalists and musicians from across the county and beyond, led by Artistic Director of Broad Reach Records, Kai Hoffman.



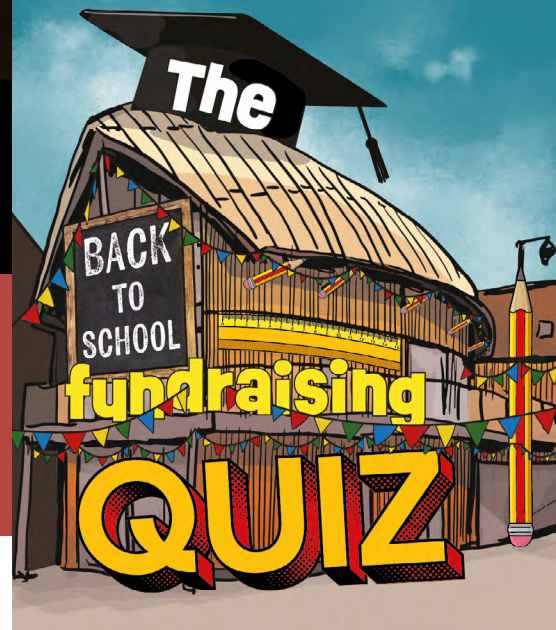
**28 September**

**Christine Tobin and Phil Robson**

Resident in the USA, we are excited to have the multi-award-winning vocalist Christine Tobin and acclaimed guitarist Phil Robson at our Whitstable jazz club! The duo are currently touring their new show *The Long Road* – a rich, genre-crossing programme exploring journey, growth, and resilience, which has met with great critical acclaim around North America.

This intimate and expressive set blends Tobin's original compositions with reimagined works by Tom Waits, Bob Dylan, Leonard Cohen, and Paul Simon, alongside stunning musical settings of poetry by WB Yeats and Paul Muldoon. Their signature sound features Tobin's warm, soulful voice and Robson's inventive guitar work, brought together with exhilarating improvisation and deeply personal arrangements.

Christine Tobin, celebrated for her distinctive artistry, has received a BBC Jazz Award, the Ivors Composer Award (formerly BASCA), and the Parliamentary Jazz Award for Vocalist of the Year. Phil Robson is an award-winning guitarist known for his collaborations with legends like David Liebman, Barbra Streisand, and Django Bates. Together, Tobin and Robson craft performances that are soulful, inventive, and emotionally resonant.



**27 September 7 - 9.30pm** bar opens 6.30pm  
**Book a table £48** (up to 8) or **join a table £6**

Come and join us for our latest fundraising 'Back to School' Quiz. Sharpen those pencils and dust off your thinking caps – it's time to head back to school! Test your knowledge with our fun, nostalgic quiz with classic trivia and bonus rounds!

There are prizes for the winning team and a great fundraising raffle too.

Light snacks are included, but please feel free to bring your own nibbles

We will be running a bar for the evening - please note only drinks purchased from The Horsebridge can be consumed during the quiz.



[thehorsebridge.org.uk/quiz](http://thehorsebridge.org.uk/quiz)

**Whitstable Wine Club 7 - 8.30pm**

**£13 per session** (special events may be more)

This is not a wine school or a "serious" way to learn about wine. This is a monthly(ish) social, fun way to discover your palate and try things you may not have drunk before.

Try 8 wines, with nibbles and wine chat.

17 July **Special Collaboration with STACKS KENT.**

*Please note this event is £40pp.*

31 July Rosé wine.

25 Sept New World wine.

23 Oct School of Port Takeover! Come and try every colour of Port and learn from one of the UK's best Port educators, Adam Odor.



## The bar is open!

Before all of our live events we are thrilled to serve you from our fantastic pop-up bar. This cracking little volunteer run bar is the only way we are able to run and develop our programme of quality and intimate events. Our fabulous volunteers look forward to serving a selection of alcoholic and soft beverages alongside a small range of snacks.

If you are enjoying our growing live events programme, please do pop along to the bar beforehand and help us to keep the events coming!

## Comedy at The Horsebridge

**Sunday evenings 7pm**

Bar opens 6pm

**£12 or £10 for Friends**

[thehorsebridge.org.uk/comedy](http://thehorsebridge.org.uk/comedy)



Join us every month for an evening of laughter at Comedy at The Horsebridge. Held on the first Sunday of each month the club will provide an intimate setting where you will be able to see rising stars along with some big names trying out new material.

New season begins in September, join our newsletter, follow on socials or visit our website to see when the acts are announced.

# CREATE & DO FAMILIES

thehorsebridge.org.uk/families

There are many activities for families regularly taking place in the centre, a mix of classes run by tutors who hire our spaces and sessions run by us.



## REGULAR CLASSES

### MONDAY

**Hey Diddle Music 3-4 years (July only)** 09.20 - 10.00  
**Hey Diddle Music 0-2 years (July only)** 10.20 - 11.00  
Anita Memmott, nitamemmott@gmail.com  
**The Maypole Project Art Sessions** 15.45 - 18.00  
Phillip Price, phillipprice@maypoleproject.co.uk

### WEDNESDAY

**The Horsebridge pre-school Art Den** 10.00 - 11.00  
a weekly creative play session from 18 months old.  
**La Jolie Ronde: Reception to Year 2** 16.00 - 16.45  
**La Jolie Ronde: Years 3 to 5** 16.45 - 17.30  
Vicki Sullivan, lajolierondevicki@gmail.com  
**The Horsebridge Young Makers Club** 16.00 - 17.00  
a weekly art club for primary school children.

### THURSDAY

**Hey Diddle Music 3-4 years (from Sept)** 09.15 - 09.55  
**Hey Diddle Music 0-2 years (from Sept)** 10.05 - 10.45  
Anita Memmott, nitamemmott@gmail.com  
**Little Science Society** 10.00 - 11.00  
Monika Wentowska, info@thelittlescienceociety.com

### FRIDAY

**La Jolie Ronde: Preschool French** 15.00 - 15.30  
Vicki Sullivan, lajolierondevicki@gmail.com

### SATURDAY

**The Horsebridge Family Art Club** 14.00 - 15.00  
A monthly creative workshop for all the family.

## WORKSHOPS



**10 and 22 AUGUST** £12 adult £7 child  
**Family Beach Draws with Liz Atkin** 1 - 3pm  
Fun family charcoal workshops, sketching on the beach before creating a giant communal artwork in the studio at the Horsebridge. For ages 5+ plus accompanying parents/carers.  
Visit [lizatkin.com](http://lizatkin.com) or [buytickets.at/lizatkinartist](http://buytickets.at/lizatkinartist)



**18 - 22 AUGUST** 5 day course £100  
**Summer Photography workshop** 9am - 12pm  
Ages 8-16. A summer workshop on the fundamentals of photography; how light works, getting into manual mode and what makes a photo good or bad. We aim to unlock your child's creativity through photography. Visit [www.ignitecreativeacademy.com](http://www.ignitecreativeacademy.com)

## THEATRE

**29 and 30 August** £5 adult FREE child  
**Tales of Gods and Heroes** by Constant Lark  
See theatre listing on page 7 for more details



## PAY WHAT YOU CAN

FREE Family activities where you pay what you are able to.

**2-3.30pm Weds**

**ages up to & including 11 years**  
30 July and 6, 13, 20 and 27 August

A fun weekly creative play session, with different art activities each week to enjoy together as a family.

Led by Denise there will be a variety of different activities for your child to develop their artistic skills!

Sessions are FREE with a suggested donation of £5

printing, painting, modelling, paper crafts

THE HORSE BRIDGE

The Whitstable Harbour and Boat Show takes place on **Saturday 9 August**, a celebration of the town's connection with the sea, past, present and future.

**Join us for fun crafting workshops**

11am - 12.30pm **Driftwood Boats and Nautical Wind Chimes**

2 - 3.30pm **Under the sea ships portholes and flag bunting**

Workshops are FREE with a suggested donation of £5

**Join us for drop-in family workshops in the run up to the Wild about Whitstable eco fair.**

**Wednesday 13 August** 1.30 - 3.30pm  
**Coastal Crafts with Art Den**  
Craft a beautiful coastal themed hanging wreath and try out other sea themed crafts with all the family.

**Thursday 14 August** 1.30 - 3.30pm  
**Coastal Crafts**  
Drop-in with the family to create colourful fabric seascape pictures and have fun trying out other coastal crafts.

**It's back!**

**New day, same great experience**  
Starting on 10 September

**Young MAKERS club** every **Wednesday** during term-time **4 to 5pm**  
For primary school age children

**FREE** with a suggested donation of £5 per child but please pay what you are able to

The Horsebridge Young Makers Club is an informal weekly after-school club where young people can learn about different mediums and explore their own art style.

There is a different topic each week with an art or craft project to make and take home.

Our sessions are for everyone and we are able to offer an inclusive space for young people with disabilities, learning differences and mental health needs and are delivered by experienced staff.

FIND OUT MORE AND BOOK  
at [thehorsebridge.org.uk/ymc](http://thehorsebridge.org.uk/ymc)  
by phone 01227 281174  
or pop in: 11 Horsebridge Road, Whitstable

THE HORSE BRIDGE

THE HORSE BRIDGE

**FAMILY ART CLUB**

Suggested donation £5

Family Art Club is for children of any age who like to be creative and want to enjoy it with parents, guardians or grandparents in a supportive and inspiring space.

**SUMMER SPECIAL**  
**WIRE BIRDS**  
**THURSDAY 28 AUGUST 10.30AM - 12PM**

**CLAY SCULPTURES**  
**SATURDAY 20 SEPTEMBER 2 - 3PM**

FIND OUT MORE AND BOOK  
on [thehorsebridge.org.uk](http://thehorsebridge.org.uk) or 01227 281174 or visit 11 Horsebridge Road, Whitstable

Booking recommended

**10-11am Weds**

**for pre-schoolers 18 months+**

Come and get creative with your little one painting, sticking, modelling playdough and more.

Led by Denise there will be a variety of different activities for your child to develop their artistic skills!

Sessions are FREE with a suggested donation of £5

sticking, playdough, THE HORSE BRIDGE, painting, exploring



## Art and Artists with Richard Dean MA

Tickets **£10** or **£9 for Friends**

Combining art history, biography and critical analysis you will learn about the lives and works of some important artists and topics. What did these artists do? Why did they do it? Why does it matter? Course tutor, Richard Dean MA, is a practicing artist and experienced lecturer who has lectured at universities and art colleges in London and the southeast and at Tate Britain. Enjoy the entire series or choose individual talks.



### Art & Artists 6

The latest series of these popular talks starts this September with more great insights.

### Thursdays 18 Sept - 20 Nov

1.30 to 3.30pm  
 18 Sept Vincent Van Gogh: 70 Days  
 25 Sept Native American Art: Then and Now  
 2 Oct Florence 1504: Art's Big Year  
 9 Oct 1891: A Year in Modern Art  
 16 Oct 'In the matter of Mark Rothko'  
 23 Oct Two British Artists: Celia Paul and Michael Armitage  
 30 Oct Oskar Kokoschka: Portraits of a Century  
 6 Nov Picasso and the Poets  
 20 Nov Pierre Bonnard: Public and Private



### Art & Artists 5 (re-run)

Re-run of series 5 - a great opportunity to catch up on any sessions you missed.

### Mondays 23 June - 1 Sept

10am to 12pm  
 23 June Aubrey Beardsley  
 30 June Gauguin's Last Painting  
 7 July Richard Gerstl  
 14 July Killer Collector  
 21 July Marsden Hartley  
 4 Aug Matisse and His Muses  
 11 Aug Somerset Maugham  
 18 Aug New Objectivity  
 1 Sept Felix Nussbaum

## Art Decades

Tickets **£8** or **£7 for Friends**

Art Decades series of talks look to unveil the hidden lives of rock artists outside the recording studio and finds out how they coped when they were really tested to the limit.



### Waiting for the Man - Drugs and Popular Music

**3 July** 6 to 7pm  
 Drugs and popular music have been closely intertwined from early on with fashions in drug-taking undulating through the years, just as clubs or clothing have within the art form. *Waiting for the Man* explores addictions, dalliances, creative inspiration and total burn-out and the musical by-products of drugs.



### The Madcap Laughs - Celebrating Rock Eccentrics

**14 August** 6 to 7pm  
 It's a truism that Britain produces probably more eccentrics in many endeavours, and music is no exception. This Art Decades looks at mavericks like Julian Cope, out where the buses don't run, as well as the glamour of the recluse, epitomised by the likes of Scott Walker.



### Soundtrack Heaven

**18 September** 6 to 7pm  
 A deep dive into the evolution of music in the movies with the stories behind the blockbuster soundtracks that we all know as well as the hidden gems and unsung heroes who have fully illuminated the images onscreen.



**Fri 29 August** 7.30pm

**Sat 30 August** 2pm & 7.00pm

Tickets **£5.00** adults **FREE** children

The stories of the Greek gods and heroes come alive in this new telling of some of the world's oldest stories.

Constant Lark bring their trademark warmth and irreverent humour to this collection of mythical adventures. Discover the people behind the original Trojan horse, Achilles' heel, Pandora's box and more.

Family friendly and recommended for ages 6+.

## MAKERS SHOP

You can find our makers shop on the ground floor of the Centre, on the way to our exhibition spaces. We stock a unique range of cards, prints, ceramics, glassware, homeware, bags, t-shirts, accessories gifts and craft kits, with an emphasis on promoting local designers, artists and makers.

New in are our beautiful Whitstable ceramic mugs to complement the tea towel range launched earlier in the year featuring commissioned artwork of Whitstable landmarks by Quinton Winter.

These, and our wide range of Whitstable themed products, will be showcased in a special exhibition starting on 31 July to 10 August.



# FILM

## Matinees 2pm

Doors opens 1.30pm

£5 or £4 for Friends/Earlybirds

[thehorsebridge.org.uk/films](http://thehorsebridge.org.uk/films)



Our film screenings are as much a social occasion as a chance to watch a film. Matinee screenings include free tea or coffee & biscuits.

Friends discount all year plus our Great and Best Friends can get up to 10 free films each year.



### Conclave

**Monday 21 July** Earlybird book by 7 July

12A

Following the death of the Pope, the reluctant Cardinal Lawrence is tasked with overseeing the group of Cardinals from across the globe that make up the Conclave; those responsible for selecting a new leader for the Church. But as the political machinations inside the Vatican intensify, Lawrence realizes that the departed Pope had kept a secret from them that he must uncover before a new Pope is chosen.

Cast: Ralph Fiennes, Stanley Tucci & John Lithgow.  
Director: Edward Berger.  
Running time: 2h  
Year: 2024.



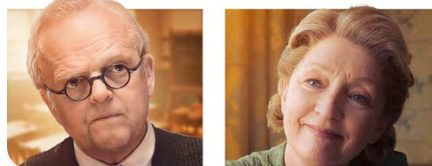
### Mr Burton

**Monday 15 Sept** Earlybird book by 2 Sept

12A

Based on a remarkable true story of the wild school boy Rich Jenkins - son of a boozy miner - and an English teacher who recognised his talent, Philip Burton. Taking Rich under his wing, the young man thrives thanks to Philip's strict tutelage and the guidance of kindly landlady, Ma Smith. A moving, untold story of how Rich Jenkins became Richard Burton the biggest star Wales has ever produced.

Cast: Toby Jones, Aimee-Ffion Edwards, Lesley Manville.  
Director: Marc Evans.  
Running time: 2h 4m  
Year: 2024.



### Hundreds of Beavers

**Sunday 21 Sept** Earlybird book by 7 Sept

12A

In this 19th century, supernatural winter slapstick epic, a drunken applejack salesman must go from zero to hero and become North America's greatest fur trapper by defeating hundreds of beavers. Jean Kayak finds himself stranded in a surreal winter landscape with nothing but his dim wits to guide him. Against a backdrop of ruthless elements and sinister creatures Kayak develops increasingly complex traps in order to win the hand of a mischievous lover.

Cast: Ryland Brickson Cole Tews, Olivia Graves, Wes Tank.  
Director: Mike Cheslik.  
Running time: 1h 48m  
Year: 2022.

# CREATE & DO ADULTS

There are many activities for adults regularly taking place in the centre, a mix of classes run by tutors who hire our spaces and Studio Sessions run by The Horsebridge.

## CLASSES, CLUBS, WORKSHOPS

[thehorsebridge.org.uk/classes](http://thehorsebridge.org.uk/classes)



These are run by independent tutors please visit our website for more details.

### REGULAR CLASSES

#### MONDAY

**40+ Contemporary Dance** 11.30 - 12.30  
Alison, Frances and Diane, [fmporritt@yahoo.com](mailto:fmporritt@yahoo.com)  
**Yoga Mixed Level** 19.15 - 20.15  
Emma Epton, [whitstablecommunityyoga@gmail.com](mailto:whitstablecommunityyoga@gmail.com)

#### WEDNESDAY

**Heart Centred Yoga** 14.00 - 15.00  
Jane Garrett, [facebook.com/HeartCentredYogaUK](https://www.facebook.com/HeartCentredYogaUK)

#### THURSDAY

**Body Control Pilates: Intermediate** 18.00 - 19.00  
**Body Control Pilates: Mixed Ability** 19.00 - 20.00  
Alison Cobley, [alisonpilates@aol.com](mailto:alisonpilates@aol.com)

#### FRIDAY

**Modern Fusion Dance** 10.00 - 10.45  
Rosita Yarboy, [ryarboy@sky.com](mailto:ryarboy@sky.com)

#### SATURDAY

**Bollyjoy** 10.30 - 11.30  
Ash Mukherjee, [bollyjoyous@gmail.com](mailto:bollyjoyous@gmail.com)

#### SUNDAY

**Yin Yoga** 10.00 - 11.00  
Emma Epton, [whitstablecommunityyoga@gmail.com](mailto:whitstablecommunityyoga@gmail.com)

### CLUBS & GROUPS

#### WEDNESDAY

**The Rabbit Hole: bi-weekly group** 09.00 - 12.30  
Ann Small, just drop-in

#### THURSDAY

**Comic Club: monthly club** 19.00 - 21.00  
Instagram: @whitscomicclub

### WORKSHOPS

**SATURDAY 13 & 27 JULY** £25  
**Whitstable Beach Draws** 13.00 - 15.00

Join artist Liz Atkin in this two-hour charcoal workshop. Begin with sketching on Whitstable beach, followed by the creation of seascapes and a large collaborative drawing at the Horsebridge Centre, all inspired by the textures of the shoreline. Age 16+



Have your next meeting in our

**ROOM  
WITH A SEA  
VIEW**



available for  
**hire now**

for £17 an hour or £75 for the day

Or perhaps one of our other spaces?  
We have a range of capacities up to 220 people.

Maybe one with a balcony, aircon,  
a dressing room or sinks. Enquire  
within or take a look on our website.

# STUDIO SESSIONS

thehorsebridge.org.uk/studio-sessions



A programme of creative workshops supported by a great community of skilled local artists and teachers. Taking place in our large, light and airy Studio, each session aims to develop or gain creative skills and confidence in an enjoyable and friendly group.

Don't forget the *\*special 10% off for Best Friends with Great Friends getting 5% off the full price.*

## COURSES



### Landscape techniques: Technical painting course with Kim O'Neil £250

**Thursdays 4 Sept - 13 Nov:** Unlock your creativity and master the art of landscape painting with our comprehensive 10-week technical painting course. Covering a range of fundamental techniques to help you create stunning effects in your landscape paintings.  
**10.30am - 12.30pm £225 \***



### Drawing with complementary colours with Camille Serisier £200

**Fridays 12 Sept - 5 Dec:** This 7 session drawing course will explore complementary colours, what they are and how to use them. It is designed to help participants strengthen their understanding of colour theory and incorporate that knowledge into their pre-existing drawing approach.  
**1 - 3.30pm £180 \***



### Linoprint reduction course with Rochelle Bloom £160

**Saturdays 13 Sept - 4 October** Reduction lino printing involves cutting and printing from the same block of lino to build up an image instead of using a single colour or multiple plates. During this 4-week course you'll learn how to plan your design, cut your block and produce print editions.  
**10am - 1.30pm £144 \***



### Sketch and paint with Ilse Mikula £100

**Mondays 15 Sept - 13 Oct:** This 5 week course is ideal for beginners and those with some experience in drawing and watercolour painting. You will be able to develop observational and expressive techniques and immerse yourself in the evocative surroundings of Whitstable harbour and seashore.  
**10am - 12pm £90 \***



### Studies of Place: Drawing and watercolour with Ilse Mikula £160

**Mondays 15 Sept - 3 Nov:** This 8-week course focuses on developing and refining drawing and painting techniques through the study of both natural landscapes and built environments. Working from life and photographs, you will create observational sketches to develop into studies in watercolour and ink.  
**1 - 3pm £144 \***

## SINGLE SESSIONS

### Figure making workshop with Steve Postgate £35

**Thursdays 10 July, 14 August & 18 September:** Learn how to use clay for sculpting and make a figure of animal, human or, at least, beings from this general area of the galaxy.  
**6.30 - 8.30pm £31.50 \***



### Abstract watercolour: creating unique abstracts with Kim O'Neil £60

**Saturday 12 July:** Discover the exciting world of salt water-infused watercolours. We will harness the properties of salt to create stunning, organic textures and patterns in our watercolour paintings. Capture the essence of the sea and the unpredictability of nature in your art.  
**10.30am - 3pm £54 \***

### Life drawing with sculpture option with Steve Postgate £15

**26 July, 23 August & 20 September:** During this workshop you will draw from a life model and have the option to create a clay figure. Sculpture option adds £15 to the cost which includes clay & tools.  
**11.30am - 1.30pm £13.50 \***



## MONTHLY SESSIONS

### Monthly print club with Rochelle Bloom £30

**Tuesdays 15 July, 12 August, 9 September:** Print Club is a social, sharing & learning group, offering a studio space where people can come to experiment and print with professional guidance and support.  
**10am - 2pm £27 \***



### Monthly oils club with Gaven Alexander £30

**Fridays 18 July, 15 August, 19 Sept:** This monthly club is open to anyone who has always wanted to try oil painting or wants to spend time with others getting the most out of a medium they already enjoy.  
**9.30am - 12.30pm £27 \***

### Art journaling and mixed media with Debs Smith £30

**Wednesdays 9 July, 3 September:** A great way to learn mixed media techniques without having to buy a canvas. It can be done in any book, or any substrate, it is essentially art for you!  
**10am - 1pm £26 \***



### Saturday sewing club with Linda Tiley £10

**6, 13, 27 September:** Suitable for adults wishing to gain confidence with sewing clothes, home items. Learn to use patterns, buy materials and much more. Beginners welcome.  
**10am - 12.30pm £9 \***

# EXHIBITIONS



Our exhibition spaces offer a diverse and dynamic programme all year. They showcase work from a wide range of artists as well as art, heritage and community projects curated by The Horsebridge. Exhibitions are **free to visit** and are open to the public.

2 - 14 July



**SIX EXHIBITION**  
Artists' Collective

Returning for its 3rd year, a diverse group exhibition showcasing a group of artists skilled in their specialisms, celebrating the diversity of artistic expression.

2 - 14 July



**JULY**  
Artists' Collective

Each artist from the Six exhibition presents work inspired by the month of July, capturing the spirit and atmosphere of this summer month.

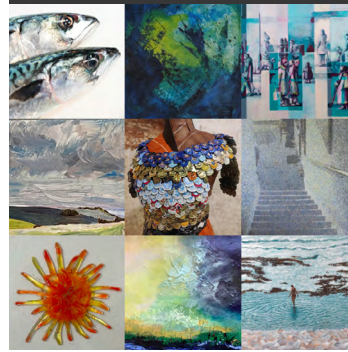
16 - 28 July



**'In Parallel' - Different voices, shared spaces**

Ann Palmer, Hazel Christine, Louise Rieger, Besnik Mehmed Four artists, four perspectives, brought together in one space exploring the intersections of abstraction, landscape, memory and structure.

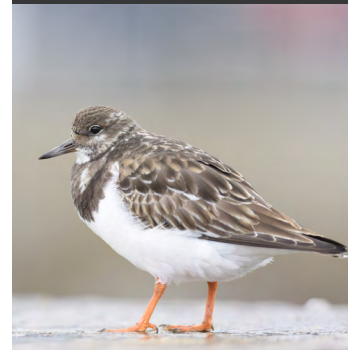
14 - 25 August



**Vicennial**  
South East Artists

This Deal based artists group celebrate their 20th Anniversary by exhibiting an evocative range of artwork, including paintings, mixed media, sculptures, textiles, glasswork and photography by 28 artists.

27 August - 7 September



**The 2025 East Kent Coast Photography Competition**  
Bird Wise East Kent

Bird Wise East Kent and the Thanet Coast Project proudly present the East Kent Coast Photography Competition Exhibition, celebrating our coastline's wildlife, landscapes, and human impact.

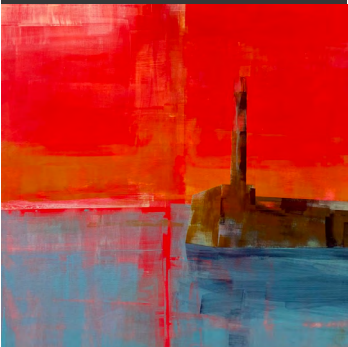
27 August - 8 September



**Nagual Creations**  
Phillip Long

Working as 'Nagual Creations' Phillip gained a global reputation for enormous art installations in raves and festivals. Reverberations of the music and culture can be seen in original oils and limited edition prints that Phillip will be exhibiting.

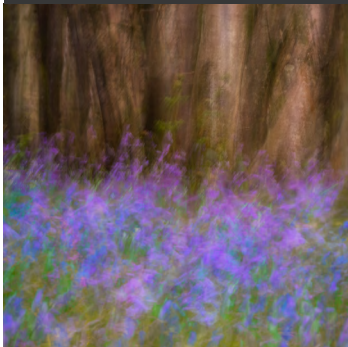
16 - 28 July



**Luminous Tides**  
Deborah Isabella Gilbert & Nick Gilbert

A collaborative exhibition featuring both painting and photography reflecting the beauty of the East coast landscape.

30 July - 11 August



**Blue Skies & Rosie Tints**  
Laura Drury LRPS, Gaven Alexander

A collection of impressionist photography by Laura alongside paintings taken from a new illustrative book by Gaven.

31 July - 10 August



**Horsebridge Summer Shop**  
Local Makers

Shop our range of Whitstable-themed items and unique merchandise by local makers and independent designers. The perfect place to find one-of-a-kind souvenirs and gifts whilst supporting creative talent in town.

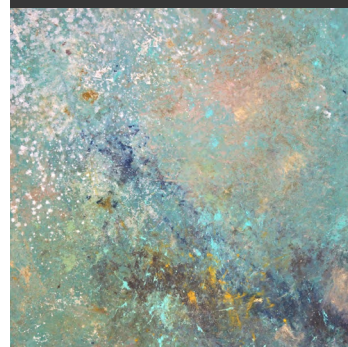
10 - 22 September



**2D/3D Poetry - recent work**  
Ron Freeman

There is a relationship between these three disciplines which the viewer may discern. Messages are often subliminal, Ron leaves interpretation to the beholder, he says, "I wouldn't want to trespass on their daydreams."

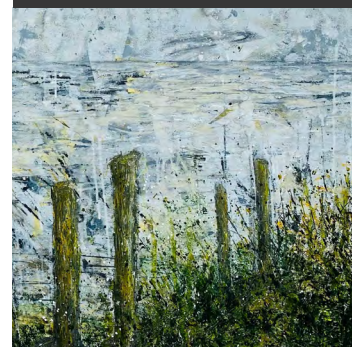
24 September - 6 October



**5 Years in the Wild**  
Kim O'Neil

Kim O'Neil presents a powerful collection of large-scale biomorphic abstract paintings, created through an immersive collaboration with nature

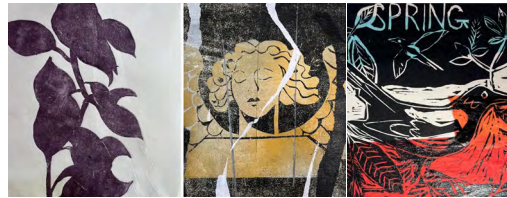
24 September - 6 October



**Wild Collective**  
EnviroPainters

EnviroPainters are a collective of artists dedicated to creating art in natural environments, on a variety of surfaces and using found objects sympathetically as tools. Each artist's work reflects their unique interpretation of the environment.

10 - 21 September



**Print Club Presents ...**

Members of The Horsebridge monthly print club who meet monthly to experiment and produce their own prints under the guidance of Rochelle Bloom.

# DID YOU KNOW ...

... that Friends of The Horsebridge help make a difference for so many people in our community?

Our Friends are critical to initiatives like ARTbank, Pay What You Can, supporting emerging local creatives through our Shop and just keeping the lights on and the doors open for everyone that relies on us. Being a Friend also means you can be part of shaping the future of the centre too.

**Without your support all of this could soon be gone as we battle a £30,000 shortfall.**

## Join as a Friend from £25

Benefits include 10% off in The Horsebridge Shop, all film screenings at our Earlybird prices and special prices and invites to activities throughout the year.



Join in the centre or on our website [thehorsebridge.org.uk/friends](http://thehorsebridge.org.uk/friends)

Great and Best Friends can get up to 10% off Studio Sessions and free Film tickets every year.

# PLEASE JOIN TODAY

Charity Number 1099570

## Come and visit ... stay in touch



**Mondays to Saturdays**  
9am - 5pm

**Sundays**  
10am - 4pm




**Closed Tuesdays**  
(except for events)

11 Horsebridge Road,  
Whitstable, Kent. CT5 1AF

[thehorsebridge.org.uk](http://thehorsebridge.org.uk)

**01227 281174**

[info@thehorsebridge.org.uk](mailto:info@thehorsebridge.org.uk)

   @thehorsebridge