

WHAT'S ON

July to
September 2018



cinema

workshops

classes

kids

galleries

shop

cafe

THE HORSEBRIDGE WHITSTABLE



Copperfields
OF WHITSTABLE

Cookshop & Gifts Since 1956

Inspiration for your kitchen and home

Cookware • Homeware • Gifts • Bakeware • Furniture • Electrical • Cards

shop@copperfieldsofwhitstable.co.uk • www.copperfieldsofwhitstable.co.uk

Open 7 days a week • 93-95 High St • Whitstable • Kent • CT5 1AY • Tel: 01227 273519

THE HORSEBRIDGE WHITSTABLE

July – September 2018

contents

supported by



**NATIONAL
LOTTERY FUNDED**

with thanks to



Garfield Weston
FOUNDATION

working in creative partnership with

Whitstable Oyster Festival

	Page
Clubs, Talks and Films	7
Galleries	18
Children's Workshops	29
Workshops	30
Classes for Adults	33
Classes for Children	39



betty loves bryan

Contemporary art, homeware and clothes

And THE place to buy Breton stripes!

108 High Street, Whitstable, Kent CT5 1AZ

01227 271001 / 07788 910115

bettylovesbryan@btconnect.com • www.bettylovesbryan.com



Follow us on Twitter
@lizziedesign



Like us on
Facebook



Follow us on Instagram
@betty_loves_bryan

welcome

The Horsebridge Arts Centre is located in the heart of Whitstable on a site which has a long tradition of community and cultural activity. Since its launch in April 2004, the Horsebridge has established itself as a creative venue at the heart of arts, social and learning activities in Whitstable and the wider north east Kent area.

The Horsebridge Arts Centre provides a programme of events all year round that includes exhibitions, classes, lectures, film screenings and creative workshops. The Centre also has a friendly cafe with balcony and sea view as well as a super shop selling locally made crafts, cards, prints and unique gifts.

Admission to the centre is free and we are a registered charity which relies on the support of our users and the public to continue this valuable resource.



**Fishslab
Gallery**
11 Oxford Street
Whitstable

 Fishslab Art Gallery
 @fishslab1

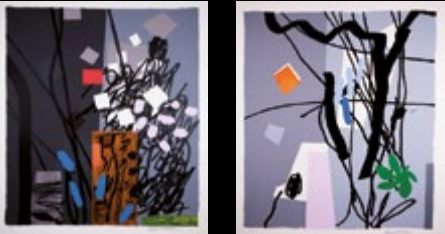


Art Gallery
www.fishslabgallery.co.uk

Chappell CONTEMPORARY

ART GALLERY

Specialising in Limited Edition Prints
and Contemporary Originals by acclaimed
internationally selling and showing artists



www.chappellcontemporary.com
30 Oxford Street, Whitstable, CT5 1DD

Comic Club

Thursday 12 July, 9 August, 13 September 7-9pm

clubs

£4 to join, £2 thereafter

A great monthly club for lovers of comics and graphic novels — a heady mix of industry professionals and fans of the artform.

Have a beer and read great, inspiring, new or vintage graphic fiction.

18+



Learn to Knit and Make Your own Bobble Hat with Linda Tiley

19 September 10am-1pm

£30

All materials and instructions will be provided, and each step demonstrated, we will even check your size to ensure the perfect fit.

You will be taught to cast on and off, how to do knit and purl stitches, simple decreasing, and how to sew it up.

To book call **01227 281174** or online
www.horsebridge-centre.org.uk



MERIDIAN

Meridian are inline with all your Mortgage Needs

We recommend from the whole of the market and offer a FREE no obligation initial consultation



- Mortgages
- Remortgages
- Buy to Let Mortgages
- Bridging Loans / Fast Finance
- Secured Loans
- Home Insurance
- Life Assurance
- Critical Illness
- Income Protection

Meridian Consultants

50 - 52 Oxford Street, Whitstable, Kent CT5 1DG

Call us today on **01227 26 66 88**

info@meridian-mortgages.co.uk

YOUR HOME MAY BE REPOSSESSED IF YOU DO NOT KEEP UP REPAYMENTS ON YOUR MORTGAGE.

Meridian is a trading style of Rosemount Financial Solutions Ltd who are an appointed representative of Intrinsic Financial Planning Limited (Registered in England 5372217) and Intrinsic Mortgage Planning Limited, which are authorised and regulated by the Financial Conduct Authority. Intrinsic Financial Planning Ltd and Intrinsic Mortgage Planning Limited are entered on the FCA register under reference 440703 and 440718.

Horsebridge Matinees

Free tea or coffee and biscuit at every performance

film

Goodbye Christopher Robin (2017)



Thursday 19 July 2pm

tickets £5 earlybird £4

GOODBYE CHRISTOPHER ROBIN is a biopic about the relationship between author A.A. Milne and his son, who inspired the Winnie the Pooh stories.

1hr 40mins Cert PG

For earlybird discount book before 5 July.

The Death of Stalin (2017)



Thursday 23 August 2pm

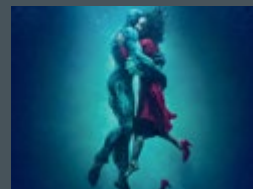
tickets £5 earlybird £4

THE DEATH OF STALIN is a British comedy drama in which the remaining members of the Secretariat of the Communist Party vie for power in the aftermath of Stalin's demise.

1hr 40mins Cert 15

For earlybird discount book before 9 August.

The Shape of Water (2018)



Thursday 20 September 2pm

tickets £5 earlybird £4

THE SHAPE OF WATER is a fantasy drama in which a mute woman working in a research facility develops a relationship with an amphibious creature.

2hrs Cert 15

For earlybird discount book before 6 September.

Our film programme is supported by Tesco's Bags of Help initiative **TESCO** Bags of Help

book by phone **01227 281174** or online horsebridge-centre.org.uk/tickets



MARGO SELBY

Bradstowe House
35 Middle Wall
Whitstable, Kent CT5 1BJ
01227282758

Studio & Shop
Monday - Friday (excl. Bank Holidays)
10am - 4pm

margoselby.com

Horsebridge Art Talks

The Horsebridge Art Talks programme continues with lectures exploring different facets of art and culture throughout the centuries, through presentations with images and artefacts. Led by Hephzibah Lewellyn Jones.

Contact: hephzibahllewellynjones@aol.com / 07763 016 941 directly for more detailed information.

Wednesday 18 July 7pm

tickets £5

Looking at Las Meninas by Velázquez

Diego Velázquez, the leading artist of the Spanish Golden Age, painted Las Meninas in 1656. But what is the composition really telling us? Who are the characters and what do they represent? Discover more about this moment of history in a frame.

Wednesday 19 September 7pm

tickets £5

Off the Beaten Map

Looking at curious maps and discovering curious facts: Explore alternative views of the world and take a wander through some strange places.

Sundays 15 July, 19 August, 16 September 11am – 1pm

FREE, small suggested donation

NEW: Art Talks Club

Join Hephzibah for monthly round table discussions to exchange thoughts on any area of artistic practice of personal interest. Participants are encouraged to bring books, ideas and objects for an informal group session of looking at art.



Monday to Friday 8am - 6pm

Now open at The Umbrella Community Centre

An inclusive, and friendly co-working space located centrally on Whitstable's Oxford Street

'Find your place in our co-working community'



Email: talk@hivecoworking.co.uk

www.hivecoworking.co.uk

THE HORSEBRIDGE WHITSTABLE

Young
MAKERS
club

every
Thursday
during term-time

4 to 5pm

age 6+

£3 each or £5 for two

Book at reception

Every **Thursday**, from **4pm to 5pm**, come and take part in our after school art class, with activities inspired by the rich and varied themes from selected exhibitions in our galleries.

5th, 12th, 19th July Oyster festival **parade**

Join us to help create supersized marine animals or your own mini sea creatures, made from up-cycled and recycled materials, that will feature in this year's Oyster Festival parade.

6th September Make a **graffiti inspired** artwork

13th September Learn to make **seeded paper**

20th September **Map pendants** for keyrings & bag tags

27th September Workshop by Young Digital Makers

summer holiday club 2 to 4pm

We are also running special school holiday workshops this August

2nd August 2-4pm **Monoprinting** with leaves

9th August 2-4pm **Paper fan decorating**

30th August 2-4pm **Illustrated Whitstable postcards**



Birdies Restaurant

Local fish from
Whitstable Harbour

Classic **French** Cuisine

Opening Times:

Lunch

Tues - Sun 12.00/2.30

Evenings

Tues - Mon 6.00/9.30

41 Harbour Street
Whitstable, Kent CT5 1AH
For reservations telephone:
01227 265337



Hq HeadQuarters

Men
Women &
Children

the salon also
provides a
massage
therapy room
and coffee
corner

133 Tankerton Road, Tankerton, CT5 2AW

01227 637678

www.hqtankerton.com

GOLKK theatre group presents:

Peaking in the portrait

Friday 6 July 7pm FREE EVENT

The camera flashes. We are exposed.
Four people find themselves alone with
a camera - what will happen? With playful
physicality and subtle ensemble encounters,
GOLKK explores what it means to exist in a
world where we are simultaneously
witnesses and the witnessed.

Running time 45 mins plus post show exhibition

GOLKK are an emerging physical theatre
company who draw audiences into the
present, offering you an experience
which is not only live but ALIVE.



the **WASTE LINE**
exploring the effects of waste on our town
19 - 29 July 2018

Whitstable is a town passionate about its marine and beach environment. This summer the Horsebridge has devised a series of exciting events to reveal how waste has shaped the town over the years and look at how we can work together now and in the future to protect our local environment.

How can you get involved?

Support the community beach cleans. For dates and times visit www.facebook.com/MarineEnvironmentGroup and www.tankertonbeachhuts.co.uk

Donate materials

We are looking for materials we can upcycle into marine creature for the Oyster Festival Parade. For a full list of materials and how to donate please visit our website.

Take part in FREE Oyster Festival Parade Workshops

Help us create large sea creatures and individual carnival props for the Festival Parade.

Drop in Family sessions: Saturday 7 July 10- 4 & Sunday 15 July 11 – 4pm

After school kids club sessions: Thursday 5, 12, 19 July 4 – 5pm

IO Arts, History & Disability Workshops: Monday 9 & Wednesday 11 July 10am - 12pm

To register your interest contact Lauren at mailioarts@gmail.com

Visit The Waste Line exhibition 19 - 29 July

Discover a huge sculptural historical waste map of Whitstable created from beach clean & domestic rubbish, exploring how waste has impacted our environment over the years.

Join the Oyster Festival Parade

Contact the Horsebridge to find out how you or your organisation can get involved with the parade on Saturday 21 July.

galleries

Our galleries offer a diverse and dynamic exhibition programme throughout the year. They serve as a platform to showcase work from a wide range of artists as well as art, heritage and community projects curated by the Horsebridge.

The galleries are free to visit and are open to public every day apart from the first and last day of the exhibition dates which are dedicated installation and de-installation days.

gallery 2

27 june - 10 july

Beyond the Wave

Ross Andrews

Ross Andrews' photography captures the sea in full force for which timing, awareness and patience are key. His exhibition will bring the sea and the coastline together, both of which will be shown in a new, unfamiliar view through and beyond the wave. The exhibition will also include talks with demonstrations of specialist kit and detailed information on the science behind capturing the shot.



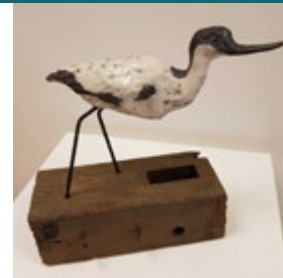
gallery 1

27 june - 10 july

The Coast

Creative T. Wells

This exhibition has been motivated by David Attenborough's 'Blue Planet' series which revealed the vast array of plants and creatures inhabiting the deepest oceans. The coast and the sea will therefore be the focal points for the artists while demonstrations and short workshops will be aimed at encouraging the visitors to get actively engaged.



gallery 1 + 2

19 - 29 july

The WASTE LINE

The WASTE LINE exhibition explores how waste has impacted our town over the years in the form of a large scale historical 3D elevation map of Whitstable, constructed entirely from local beach clean and domestic waste. As well as giving an insight into industries that changed the face of Whitstable's landscape, there will also be opportunity to see how local organisations are now working to protect our local environment now and into the future.



gallery 1

1 - 14 august

The Sea - Experimentations and Explorations

Locus Arts

Artists take inspiration from the sea which provides food, work and recreation and serves as a reminder of the beauty of the world as well as the historical heritage of our nation. Their exhibition comprises paintings, prints, ceramics, glass and mixed media works.



gallery 1

15 - 28 august

The Road Not Taken

Whitstable Art Society

Whitstable Art Society is made up of creatives from the town and nearby areas who are dedicated to the principle of life-long learning. 'The Road Not Taken' takes a line Robert Frost's poem to bring together a spectrum of different approaches to line, colour, shape, texture and scale.



gallery 2

1 - 14 august

Art on the Beach

Ann Palmer

Ann Palmer is a plein air painter with a ten-year practice. Tapping into tradition and aesthetics of influential artists like Ken Howard, Kurt Jackson and JMW Turner, she presents oil paintings steeped in the atmosphere of the sea and sky where the fluidity of the water meets shifting shores above the water and distant hills.



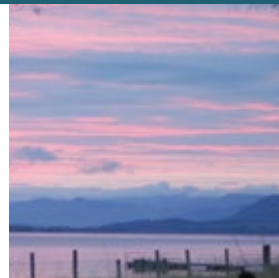
gallery 2

15 - 28 august

British Coastline

Jean Markham

Jean Markham is a prolific Whitstable-based painter fascinated with the ever-changing national coastline. Her new exhibition will encompass paintings, drawings and photographs that illustrate the changing tones and rhythms of this inherently dynamic aspect of our landscape.



gallery 1

29 august - 11 september

9 Go Down To The Sea

The Apart Group

Based on a group walk around the North Kent Coast, the exhibition seeks to explore the many facets of this ancient shoreline. Artists will exploit the use of a range of mediums, such as painting, collage and photography, to produce a visually stimulating collection of works.



gallery 1

12 - 25 september

Shifting Tides

Access 10

Access 10 is a group of local artists working in print, paint, collage, installation and sculpture that studied at UCA Canterbury as mature students. They have explored and contextualized the theme within their unique art practices and produced original works for this exhibition which address the title literally and as a metaphor of change.



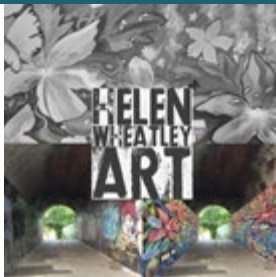
gallery 2

29 august - 11 september

Canterbury City Project

Helen Wheatley

The exhibition will produce ideas and designs for street art in public places around Canterbury which are often run down and 'tagged' (a tag is a writer's signature with marker or spray paint). The artist will work with young people to present proposals to the Council to improve these areas and create new beautiful surroundings, making art outside of the context of traditional art venues.



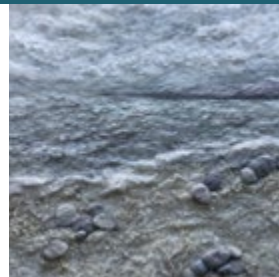
gallery 2

12 - 25 september

Changing Shorelines

Alison Olorunsola

The artist has chosen to 'paint' with textiles: felt, textile collage, often combined with acrylic, and photo lamination. The subject of her work are shorelines and the changes due to weather, tides, time of day and erosion. This exhibition also includes pieces dealing with the crumbling and collapsing of chalk cliffs and a series based on the rock strata due to erosion at Pett Level.



Young Digital Makers

Young Digital Makers is a Reaching Communities, Big Lottery funded project taking place at the Horsebridge Arts and Community Centre, encouraging digital creativity in our young people aged 7-24 years in the Herne Bay and Whitstable district. DIGITAL X CREATIVITY combines work made during the project and that of established inspirational digital artists.



room hire at the horsebridge

Room Name	Hourly Rate	Daily Rate	Sea View	Air Conditioning	Room Dimensions	Floor Area	Theatre Seating Capacity	Boardroom Seating Capacity	Standing Capacity
The Hub	£15.00	£90.00	No	Yes	6.3x7.9m	49m ²	40	24	45
Workshop 4	£12.00	£60.00	No	No	3.5x7.9m	27m ²	20	16	30
Workshop 3	£12.00	£60.00	Yes	No	3.5x6m	21m ²	16	8	20
Workshop 5	£12.00	£60.00	Yes	No	3.5x6m	21m ²	16	8	20
Performance Space Monday-Friday Saturday & Sunday*	£17.50 £25.00	-	No	Yes	9.5x12m	114m ²	150	50	240

*9am to 6pm only



CGS Blinds & Shutters

SHUTTERS



VERTICAL



VENETIAN



ROLLER



PERFECT FIT



PLEATED



ROMAN



OFFICE
OR HOME

♦ CONSERVATORY ROOFS ♦

Come and visit our Showroom, and choose from Materials/Fabrics.

Expert advice with 1st Class service.

All blinds are custom made to your needs.

Supply Only Or Surveyed And Installed

107A Tankerton Road, Whitstable CT5 2AJ

01227 278643

www.cgsblinds.co.uk



Whitstable Oyster Festival

Sat 21st - Sun 22nd July



Landing of the Oysters
Long Beach

Oyster Parade
Through the town

The Harbour Stage
In the Harbour

Grotters
Reeves Beach

Oyster Eating Comp.
Harbour Stage

Tankerton Food Fair
Tankerton Slopes

Family fun-times, heritage inspired happenings and many memorable moments!
With many more community activities still to be announced...

Join the fun and get involved!

We're looking for a special team of fun-infused WOF Ambassadors keen to get stuck into the festival activities, play vital roles in facilitating the weekend and have a good time doing it!

Find out more about joining WOFA and their range of community activities by signing up on:

www.whitstableoysterfestival.co.uk





Liz McGown Louise Whorlow
CHIROPRACTORS

- Relieve Pain and Improve Function and Performance
- Back and Neck Pain, Headaches
- Sport Injuries, Joint Pain and Muscle Aches
- All Ages Welcome: Children, Teenagers, Adults and Elderly

EVOLUTION HEALTH 01227 273821
 62 Borstal Hill
 CT5 4NA

GCC Registered
 General Chiropractic Council
 Member of the
 British Chiropractic Association


Quarter page
 62mmx62mm

Full page
 130mmx130mm

advertise here

Half page
 130mmx62mm



spacemaker
 architects

Want to improve your existing space?
 Book a one hour no obligation consultation
 with us for your £40 donation to the
Horsebridge Centre.
 You'll have some new ideas and the
 Horsebridge will be £40 better off.

Tweet us **@spacemakerarch** or
 call Louisa on **07846 851694.**
www.spacemakerarchitects.co.uk



children's workshops

Dot Kids: Frida Kahlo Children's Art Workshop

Tue 24 July 10.15-11.45am 5-11 years. £15 Booking Essential

Each child will create their own self-portrait painting on canvas using Kahlo as an influence. Your child will bring home preliminary work, handouts & a painted canvas to proudly hang at home.

Dot Kids: Mondrian Children's Abstract Art Workshop

Thu 26 July 10.15-11.45am 5-11 years. £15 Booking Essential

Each child will create their own abstract painting on canvas using Mondrian as an influence. Your child will bring home preliminary work, handouts & a painted canvas to proudly hang at home.

Dot Kids: Picasso Children's Art Workshop

Tue 7 August 10.15-11.45am 5-11 years. £15 Booking Essential

Each child will create their own cubist style portrait using Picasso as an influence. Your child will bring home preliminary work, handouts & a painted canvas to proudly display at home.

Dot Kids: Lichtenstein Children's Pop Art Workshop

Thu 9 August 10.15-11.45am 5-11 years. £15 Booking Essential

Each child will create their own pop art on canvas using Lichtenstein as an influence. Your child will bring home preliminary work, handouts & a painted canvas to proudly hang at home.

Each workshop consists of small groups of children. All materials provided.
 Snack provided in accordance to dietary requirements. This is a drop-off session.

For all Dot Kids workshops contact **Julie@dotkids.co.uk**
 or 07961 303156 or visit **www.dotkids.co.uk** to book

workshops

Feminist Embroidery Workshop with Frieda Ford

Sun 1 and 22 July, 11am - 2pm

£30

All ages and levels welcome. Booking essential. I will be showing you a variety of embroidery stitches and techniques while discussing feminism in a safe and positive space. All materials and tools are included. However, up-cycling is encouraged so if you have any old clothes you could embroider into then do bring them.

Contact: frieda.ford@hotmail.co.uk to book a place

Drum Circle with Naomi Browton

Wed 4 July, 1 August and 5 September, 7pm - 8.30pm

£10

You will need a drum. Booking essential. The drum has been used for healing and altering consciousness since ancient times. The BAST method of drum therapy brings modern understanding to inherited wisdom. We will play simple rhythms together to achieve a deep relaxed (yet often energised) state.

Contact: Naomy7@hotmail.co.uk 01227 741802 sacredvoicehealingdrum.co.uk/events

Learn to Up-cycle your Clothes with Frieda Ford

Sun 8 and 29 July, 11am - 2pm

£30

This workshop will teach you how to up-cycle your old, boring or damaged clothes and keep fashion sustainable. Bring along an item of clothing to upgrade if you have one or just come along to learn the skills to do it. All materials and tools are included.

Contact: frieda.ford@hotmail.co.uk to book a place

Lino Print Your Own Tote Bag with Beki Gowing

Sat 14 July, 10.30am - 1pm

£30

Learn how to carve lino stamps and print your own bespoke tote bag. All materials included.

Visit: beki-gowing.eventbrite.com for tickets

Concertina Sketchbook Workshop with Karen Stamper

Sun 9 September, 10.30am - 4pm

In this workshop we will work with inks, pens, pencils and collage to develop 4-10 pages on the theme of buildings/streets. We will be responding to the collage elements and mark making. I will bring plenty of materials, but you may wish to bring your favourites. You may also want to bring a couple of photos/images for reference ie. a French street, windows, doorways Please try to buy a concertina sketchbook, from Seawhite, Cassart or Amazon.

Contact for price: Karen@karenstampercollage.com 07789 242821

In celebration of the life of Ethel Chilton, whose family have kindly asked for any donations in her memory to go to The Horsebridge Arts Centre

"Dear friends, I am going
Where washing ain't done, nor sweeping,
nor sewing:
But everything there is exact to my wishes;
For where they don't eat there's no washing
of dishes
Don't mourn for me now; don't mourn for
me never
I'm going to do nothing for ever and ever."



Ethel Chilton

1916 - 2018



An open-air showcase of locally-created, British made, premium and hand-crafted goods and fine art. Micro eateries serve a mouth watering variety of food. Set in the working harbour of Whitstable.

Open every weekend (weather permitting) and 5 days a week during the summer.
Pop-up Huts available to rent.

www.harbourmarketwhitstable.co.uk



classes for adults

art
Sunday

Life Drawing with Ron Freeman

2-4pm Alternate Sundays finishes 22 July and resumes 9 September.
If you would like to join these informal sessions, please speak to Ron.
Contact: 07749 835036 mail@ronfreeman.co.uk

craft
Wednesday

Bead 'n Banter with Jayne Johnson

10am-12.30pm First Wednesday of the month. Bring beadwork and exchange tips, with monthly raffle and quarterly challenges.
Contact: 01227 265293 gillgoldfinch@btinternet.com
www.rainbowcollection.co.uk

craft
Saturday

Designed by Brownings – Wedding Stationary Consultations

First Saturday of every month starting 7 July 9am-1pm
Come and discuss all your wedding stationery needs at one of our consultations. We specialise in bespoke handmade stationery and offer a full design management service.
Contact: samantha@designedbybrownings.co.uk 07825 396 073
www.designedbybrownings.com

craft
Sunday

Slow Stitch with Yvonne Fuchs

Starting April 8, for block of 8 sessions running on second Sunday of the Month (excluding August)
2-4pm Please contact Yvonne for details of this year's course.
Contact: fuchsy141@hotmail.com

dance
Wednesday
Thursday

Flamenco Dance with Charlotte Baynes

11am-12pm - Mixed Level
5.15-6.15pm - Mixed Level Enjoy an exciting array of Flamenco styles such as Alegrias, Bulerias, Guajiras + more. Charlotte is a highly experienced and inspired teacher within the arts. Ideally, wear shoes with a firm heel.
Contact: 07906 685109 charlottecadiz@yahoo.co.uk charlottebaynes.com

dance Friday	Ballet & Contemporary Dance with Rosita Yarboy 10-11am For adults, run by Reach Performing Arts. Contact: 01227 369891 reachacademy@sky.com www.reachperformance.co.uk
dance Friday	Adult Tap Dance with Rosita Yarboy 11am-12 noon Run by Reach Performing Arts. Contact: 01227 369891 reachacademy@sky.com www.reachperformance.co.uk
dance Saturday	Diva Bollywood Dance Class with Jasmin deSylva-Smith 10.30-11.30am An hour to let your inner Diva out! A sneaky work out for your mind and body, it's fun to follow, simple routines. Everyone welcome. Contact: 07761 199179 jasmin@my-energise.co.uk
fitness Monday	Zumba with Hayley Acton 8.15-9.15pm Party yourself into shape with Latin-inspired, calorie-burning, dance fitness! Beginners welcome, first class just £1. Contact: 07562 037318 hayleyacton1@gmail.com
fitness Tuesday	Callanetics® Exercise Method with Jennifer Watson 9.30-10.30am and 10.30-11.30am Lose at least one dress size in 10 hours! Safely strengthen your whole body, especially core and pelvic floor, and dramatically improve your posture. Contact: 07966 731323 watsonjennifer16@gmail.com www.callanetics-canterbury.co.uk
languages Monday	Spanish Intermediate Conversation with Kent Adult Education Starts 1 October 10am-12pm Contact: 03000 412222 www.kentadulteducation.co.uk
languages Monday	Spanish Beginners Plus with Kent Adult Education Starts 1 October 12.30-2.30pm Contact: 03000 412222 www.kentadulteducation.co.uk
languages Tuesday	Italian Beginners Plus with Kent Adult Education Starts 2 October 1-3pm Contact: 03000 412222 www.kentadulteducation.co.uk

languages Thursday	Adult Spanish Class with Kent Spanish Speak 10am-11.15am Smile and learn how to speak Spanish in whole sentences. Come and enjoy improving your beginner's knowledge of the language in a relaxed group atmosphere. Contact: 07814 852111 KentSpanishSpeak@gmail.co.uk www.kentspanishspeak.co.uk
languages Thursday	French Intermediate Parlons Français with Kent Adult Education Starts 4 October 11.30am-12.30pm Contact: 03000 412222 www.kentadulteducation.co.uk
languages Thursday	French Advanced with Kent Adult Education Starts 4 October 1-3pm Contact: 03000 412222 www.kentadulteducation.co.uk
pilates Wednesday	Pilates with Stephanie Fancy Intermediate 6.30-7.30pm, Beginners 7.30-8.30pm Both classes for men and women. Strengthen your body, mind and spirit. Contact: 07890 897851 stephaniefancy@gmail.com www.facebook.com/fancypilates Instagram: fancypilates
pilates Thursday	Body Control Pilates with Alison Cobley 7-8pm Mixed Ability, beginners welcome Practice pilates regularly and your body will become stronger, toned and more flexible. Suitable for people of all ages and levels of fitness. Small class sizes - maximum 12 participants. For mixed ability and beginners. Contact: 07903 010816 alisonpilates@aol.com www.pilateswithalison.net
tai-chi Monday Thursday	Tai-Chi with Christine Hopper 3-4pm 1.30-2.30pm T'ai Chi Ch'uan style is the traditional Yang form. When practiced regularly T.C.C brings noticeable improvement at physical, energetic, and emotional levels. The health benefits of a serious practice are rapidly felt in daily life. Booking essential. Contact: christinehopper@talktalk.net

theatre Monday	Kent Coast Theatre (KCT) with Lou Fowkes 7-9pm. Engaging community & inspiring potential, KCT is a community theatre company based at the Horsebridge. Productions and acting workshops throughout the year for adults 16+. Contact: 01227 280314 info@kentcoasttheatre.co.uk www.kentcoasttheatre.co.uk
well being	Life Coaching and Therapy with Suzi Tyler Book an appointment anytime Suzi Tyler, Breakthrough Session with Hypnotherapy, NLP & EFT Matrix Re-imprinting. CNHC & BIH Registered. Clear hidden limits that spoil your health & happiness. Specialism: Panic Attacks. Contact: 07836 635233 www.rapid-health.co.uk
well being Wednesday	Cambridge Weight Plan Independent Consultant with Charmaine Powell Once a month, 11am-12pm Drop in and find out how Cambridge Weight Plan can help you lose weight. Choose from a variety of delicious meal replacement products to suit your lifestyle, and get my 1:1 support and guidance. Come in and see me to get the ball rolling. Contact: 07866 440524 charmaine.powellkent@gmail.com www.cambridgeweightplan.com/charmaineP
writing Sunday	Creative Writing Course with a Difference with Linda M James Returning in the Autumn, dates TBC. 2-4pm A writing course with published author and screenwriter Linda M James. Booking essential. Contact: 01227 634107 07969 051064 writingunderwater@tiscali.co.uk www.lindamjames.co.uk
yoga Monday	Yoga Basics with Bernadette Fisher 5.45-6.45pm Classical Hatha Yoga for those new to yoga, returning, or seeking a slower class. Contact: 07739 302870 bernadetteanne@aol.com www.bernadettefisheryoga.co.uk

yoga Tuesday	Vinyasa Yoga with Monica Marini 1-2.15pm A dynamic and energising practice open to those with a more developed Yoga practice and/or a good level of stamina. These classes are defined by principles of Vinyasa Krama (intelligent sequencing) and include exploration of alignment, arm balances and the practice of inversions. Contact: 01227 273147 07913 887108 momoiah@yahoo.com
yoga Tuesday	Yoga with Emma Epton 6.30-8pm Mixed Level. Yoga Alliance UK registered teacher. Emma is also pregnancy yoga trained. Contact: 07891 454450 whitstablecommunityyoga@gmail.com
yoga Tuesday Thursday	Hatha Yoga with Linda Thomson 10-11.30am 10-11.30am A space during the busy and often stressful week for you to stretch in classical yoga postures. For all levels, beginners welcome. Contact: 07516 494300 yogajoyful@gmail.com
yoga Saturday	Yin Yoga with Emma Epton 9.15-10.15am Yin Yoga targets the deep connective tissues of the body. Connecting to the meridian lines in the body and encompasses Daoist principals and traditional yoga. Contact: 07891 454450 whitstablecommunityyoga@gmail.com
yoga Saturday	Yoga Drop-in with Bernadette Fisher 11.45am-12.45pm Classical Hatha Yoga Visitors and new students always welcome - call if you'd like me to bring a mat. Contact: 07739 302870 bernadetteanne@aol.com www.bernadettefisheryoga.co.uk



Hut 23 Harbour Art Gallery

26th Jun – 3rd Jul
Sarah Dunn
Original Pencil Drawings & Paintings

3rd – 17th Jul
Anne Whittle
Water Colours

17th – 24th Jul
Janet Dance, Bethany Rogers & Marion Sheppard
Mixed Media & Ceramics

24th – 31st Jul
Daphne Candler
Mixed Media



Photo by Sue Carrae

31st Jul – 7th Aug
Lindsay Wilkinson
Felt & Photographs

7th – 14th Aug
Irene Southon
Fused Glass

14th – 21st Aug
Janet Dance, Bethany Rogers & Marion Sheppard
Mixed Media & Ceramics

21st – 28th Aug
Ann Diggins
Acrylic Paintings

Opening Times until 25th July:

Thursday – Sunday, weekdays 11am to 4pm and weekends 10am to 5pm

After 25th July, open 5 days a week



Made In Whitstable



classes for kids

Music and activities for parents and children to enjoy

drama
Tuesday

Perform Workshops

4-5pm and 5-6pm 4-7 years

A unique mix of drama, dance and singing - specifically developed to bring out every child's true potential. Booking essential.

Contact: 020 7255 9120 enquiries@perform.org.uk www.perform.org.uk

drama
Wednesday
Wednesday

Playtime Theatre with Sara Kettlewell

4-5pm 7-11 years

5-6.15pm 11-18 years

Fun drama workshops run by one of the South East's leading children's theatres. Term-time only. Contact: 01227 266272 07758 729129

playtime@dircon.co.uk www.playtimetheatre.co.uk

kids art
Wednesday

Dot Kids: Children's After School Art Club

Term Time Only, 4-5.30pm (5-11yrs)

In these workshops we will experiment with various artistic techniques, including paint, collage and sculpture. We will learn that there is no such thing as a mistake and encourage artistic freedom and confidence we will discover inspirational artists. See website or contact for more details.

Contact: 07961 303156 julie@dotkids.co.uk www.dotkids.co.uk

EVOLUTION HEALTH

- Chiropractic
- Chiroprody / Podiatry
- Bowen Technique
- Cognitive Behavioural Therapy
- Counselling Psychology
- Homeopathy
- Hypnotherapy
- Physiotherapy
- Psychosexual and Couples Therapy
- Reflexology
- Therapeutic & Sport Massage



62 Borstal Hill
Whitstable
CT5 4NA
TEL: 01227 273821

Hey Diddle Music



We sing, we move, we learn, we smile!

Music classes for babies through to pre-schoolers at
The Horsebridge Centre on Monday mornings.

Specialist Dalcroze Eurhythmics teacher at
Guildhall School of Music and Drama

Contact Anita Memmott
nitamemmott@gmail.com 07710 575 390

Holiday Club

We provide out of school care for children ages 5 to 11 years during the school Holidays at
Whitstable Junior School.

Open 8.00 - 18.00 Monday to Friday

Freshly cooked healthy meals are available each day.

For further information or to book, please visit our website www.kindergartenkids.co.uk

Alternatively, call head office on **01227 772200**



languages
Wednesday
Saturday

La Jolie Ronde French for Children with Vicki Sullivan

3.45-4.30: 6-8 year olds Booking required

9.15-9.45: 0-4 years Drop in or discount for block booking,
9.45-10.30: 8-10 years Booking required, 10.30-11.15: 5-8 years Booking
required, 11.15-12.00: 4-7 years Booking required

The fun way to learn French with action songs, rhymes, role-play and stories.

FREE trial session for all new families. Get in touch to find the right class
for your child. Term time only. Contact: 01227 779126 07889 495577

lajolierondevicki@gmail.com

www.lajolieronde.co.uk

music
Monday

Hey Diddle Music with Anita Memmott

9.20am-10.05am 18 months-3 years Term-time, booking required

10.15am-11am 0-18 months Term-time, drop in.

11.15am-12 noon 3-4 years Term-time, booking required.

Contact: 07710 575390 nitamemmott@gmail.com

music
Tuesday

Musical Bumps Mixed Age with Kirsty Ottaway

10am 2yrs+, 10.45am under 2yrs High quality music classes for babies to pre-
school children. If you are looking for a class for babies under 1 year please
get in touch. Contact: 0845 0943786 07934 921072

canterbury.faversham@musicalbumps.com

www.musicalbumps.com

music
Wednesday

Baby Moonbeams & Little Music Stars with Lucy Weston

10-10.40am 3 months to walking, 10.50-11.30am Walking - 3 years Pre-
school music classes. Contact: 07946 193733

whitstable@littlemusicstars.net

www.littlemusicstars.net

yoga
Tuesday

Yoga Family School - Teen Yoga Classes

Term Time Only starting 17 April, 6-7pm

Come and find your weekly hour of happiness and relaxation, where you
don't worry about anything at all. And you start to understand how you and
your body can make you happy, no matter what is happening around you.

Contact: 07787 435269 lois@yogafamilyschool.com

www.facebook.com/yogafamilyschool



YOGA FAMILY SCHOOL

yoga for all the family



For full class details find us on Facebook or call 07787 435 269

yoga
Friday

Yoga Family School - Preschool and Toddler Yoga

Term Time Only, 9.45-10.30am 2.5yrs - school age

£6 per mini yogi, adults go free. Come and stretch the week away and get ready to start the weekend! This is a yoga class for both preschool and their carer - so come dressed in stretchy and warm clothes. **Contact:** 07787 435269

lois@yogafamilyschool.com

www.facebook.com/yogafamilyschool

yoga
Sunday

Yoga Family School - Family Yoga

Last Sunday of every month

10-11am (3 - 6 year old mini yogis), 11am-12pm (7 - mid teens yogis)

Parents / carers: any age welcome! £10 per mini yogi/ adult. £5 additional per person.

Gives your family time to bond together and relax together. The yoga class is age appropriate for the younger yogi's - but don't underestimate that it is a brilliant stretch too for the adults!

Contact: 07787 435269 lois@yogafamilyschool.com

www.facebook.com/yogafamilyschool



HORIZONCOACHING

Rachael Sharrad

Executive Coach (ILM level 7 dip)

**Business Coaching
Bereavement Coaching
Practical Support**

Available by phone, skype, in person
or walk 'n talk on the beach.

07815542896

office@horizoncoaching.co.uk

www.horizoncoaching.co.uk

Whitstable
Nutrition Centre

A friendly, independent family
run health shop trading in
Whitstable since 1970

81 High Street, Whitstable, Kent CT5 3DY

☎ 01227 278 550

✉ whitnutcentre@gmail.com

📱 @whitstablenutri

ALMA CAIRA GLASS FUSING WORKSHOPS 2018



BEGINNERS SATURDAY WORKSHOPS

15th September, 6th October

10th November

10am - 3pm **£60 PER SESSION**

Why not treat someone to one of my gift vouchers?

Please contact me for further details or to make a booking.

www.almacaira.co.uk alma@almacaira.co.uk

01227 280 648 07947 842 642

Follow me on Facebook: [AlmaCairaFusedGlass](https://www.facebook.com/AlmaCairaFusedGlass)



**Weight Loss
with 1:1 Support
& Guidance**

call me today!



Charmaine Powell
078 6644 0524

Cambridge
Weight Plans
Independent Consultant



Integrative Body Psychotherapy



**Energy Work
Breath Work**

ruthhoskinsukcp@gmail.com
www.body-psychotherapy.org.uk
www.counselling-directory.org.uk

Ruth Hoskins MA UKCP 07742 295506

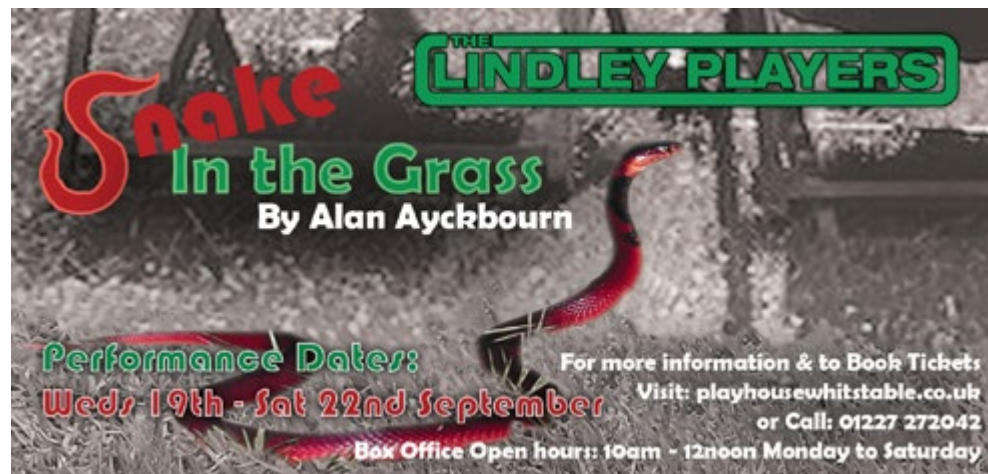
samson & coles
& ltd

Modern British Jewellery Gallery



Bespoke Design Commissions Repairs

13 Oxford St, Whitstable, CT5 1DB 01227 277985
Opening hours: Tues - Sat 10.30am - 5.00pm



The Horsebridge Cafe

Our cafe is open seven days a week serving hot and cold drinks, **delicious cakes**, light bites and **lunches**, to eat in or take-away.

For **younger visitors** we have a selection of snacks, sandwiches and drinks which can be enjoyed in our **Kids Corner**.

Free **Wifi**.

Profits from the cafe go to the Horsebridge, helping secure the future of the arts centre

FREE TEA!

That's right! As a thanks for reading our brochure you can claim a FREE tea.

Just hand this voucher in at the cafe!



have you made friends with us yet?

The Horsebridge Centre extends a warm welcome to more than 100,000 visitors annually.

It is open seven days a week, closing only over Christmas/New Year, and provides class space for tutors, meeting rooms for the community, and a cafe **as well as** a rolling programme of art exhibitions in two galleries **and** a dynamic schedule of music, comedy and film.

We receive very little public funding, so have to be largely self-financing through ticket sales, room hire and merchandise. It is our dearest wish to one day create surplus funds to allow us to improve the centre for our community.

If you value the Horsebridge, would you consider becoming our Friend? For £20 a year (£30 for joint membership and there are concessions too) we offer discounts in our on-site shop and our fantastic cafe.

Please talk to our reception staff about the Friends scheme or sign up on our website www.horsebridge-centre.org.uk. THANK YOU!

Opening Hours



The Horsebridge Centre

Mondays to Saturdays 9am - 6pm
(Later for classes and events)

Sundays 10am - 5pm

The Horsebridge Cafe

Mondays to Saturdays 9am - 4.30pm
Sunday 10am - 4pm

The Horsebridge Centre is a charity
Charity number: 1099570



thehorsebridge



@horsebridge



thehorsebridge

info@thehorsebridge.org.uk

www.horsebridge-centre.org.uk

11 Horsebridge Road, Whitstable, Kent, CT5 1AF

01227 281174